

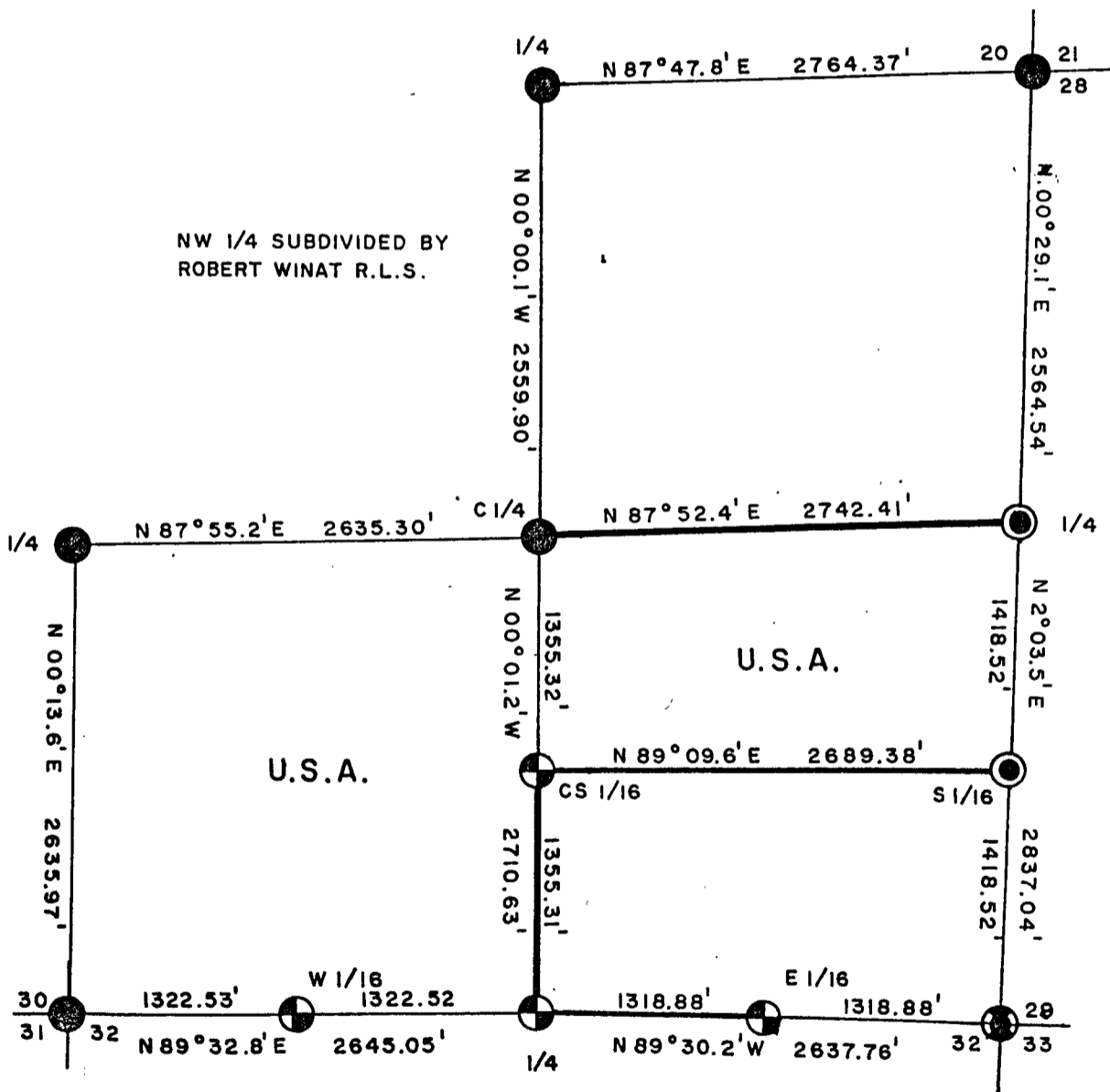
County Clerk

PLAT OF SURVEY U.S. GOVERNMENT LAND





Being the S 1/2, SE 1/4 and SW 1/4 Section 29,
TOWN 34 NORTH, RANGE 14 EAST, FOURTH PRINCIPAL MERIDIAN,
FOREST COUNTY, WISCONSIN



NW 1/4 SUBDIVIDED BY
ROBERT WINAT R.L.S.



LEGEND

-  2" x 36" ALUMINUM MONUMENT
-  2" BRASS CAPPED MONUMENT
-  R.R. SPIKE IN TOWN ROAD
-  1 1/2" IRON PIPE IN TOWN ROAD

FOREST CO SURVEYOR
 FILE # 341429-19851021
 DATE _____ RY _____

CONVERSION FACTORS

FEET TO METERS - 0.304801
 METERS TO FEET - 3.280833

Stock No. 26273

Sheet 2 of 4

SURVEY NOTES

This survey was made by the U. S. Department of Agriculture, Forest Service, for the purpose of restoring and establishing corners on the perimeter of Section 29, for establishing subdivisional corners within Section 29, and for locating and marking the boundaries of U. S. Government land on their perimeter and within Section 29, Township 34 North, Range 14 East, Fourth Principal Meridian, Forest County, Wisconsin.

The U. S. Government lands in this section were acquired in 1934.

The original Government subdivision survey of this township was made in 1859.

The corner positions recovered, restored, and established by this survey are marked by the monument described in the map legend.

The corner positions established were located to an accuracy of one part in 3000.

The bearings between corner positions are true bearings as determined by solar observations.

The field notes of this survey and a copy of this plat are on file in the Forest Supervisor's Office at Rhinelander, Wisconsin.

CORNERS RECOVERED AND RESTORED

1. Corner to Sections 28, 29, 32, and 33, T.34N., R.14E.
Corner found marked by an iron pipe under surface of McArthur Trail Road.
Corner References:

Sugar	6"	N.66°E.	38.11	feet
Sugar	4"	S.86°E.	39.57	feet
Power Pole #3414-32E3		S.63°W.	23.59	feet
Reference Corner				
(2" x 36" aluminum monument)	West		33.00	feet
Iron Pipe--1½" diameter	East		32.95	feet
2. Corner to Sections 20, 21, 28, and 29, T.34N., R.14E.
Corner monumented by J. Resvick, R. L. S. #802. Certificate on file.
3. Corner to Sections 29, 30, 31, and 32, T.34N., R.14E.
Corner monumented by J. Abernathy, R. L. S. #101. Certificate on file.
4. Quarter Corner to Sections 20 and 29, T.34N., R.14E.
Corner monumented by J. Resvick, R. L. S. #802. Certificate on file.
5. Quarter Corner to Sections 29 and 30, T.34N., R.14E.
Corner monumented by J. Abernathy, R. L. S. #101. Certificate on file.

Stock No. 26273

Sheet 3 of 4

6. Quarter Corner to Sections 29 and 32, T.34N., R.14E.

Corner restored by retracement of N. Smith's 1914 survey of Section 29.

Corner References:

Sugar	14"	N.13°E.	27.76 feet
Sugar	10"	S.24°W.	46.43 feet
White Ash	10"	N.28°W.	32.21 feet
Steel Sign Post		North	13.35 feet

7. Quarter Corner to Sections 28 and 29, T.34N., R.14E.

Corner recovered by retracement of N. Smith's 1914 survey and bearing tree remains.

Corner References:

Hemlock	12"	N.74°E.	50.09 feet
Sugar	8"	S.41°E.	88.10 feet
Sugar	6"	S.47°W.	60.78 feet
Witness Corner (2" x 36" aluminum monument)		S.87°52.4'W.	50.00 feet

8. Center Quarter Corner to Section 29, T.34N., R.14E.

Corner monumented by J. Abernathy from post and BT remains of N. Smith's 1914 survey of Section 29. Certificate on file.

9. West Sixteenth Corner to Sections 29 and 32, T.34N., R.14E.

Corner recovered from stump of BTs by N. Smith from 1914 survey of Section 29.

CORNERS ESTABLISHED1. East Sixteenth Corner to Sections 29 and 32, T.34N., R.14E.

Corner established midpoint and on line between the southeast corner and south quarter corner of Section 29.

Corner References:

Sugar	10"	North	54.84 feet
Sugar	8"	S.27°E.	57.04 feet
Sugar	8"	N.81°W.	21.86 feet
Steel Sign Post		West	1.30 feet

2. South Sixteenth Corner to Sections 28 and 29, T.34N., R.14E.

Corner established midpoint and on line between the southeast corner and east quarter corner of Section 29.

Corner References:

Sugar	10"	N.54°E.	52.76 feet
Sugar	8"	S.37°E.	62.72 feet
Witness Corner (2" x 36" aluminum monument)		S.89°09.6'E.	50.00 feet
Steel Sign Post		West	47.10 feet

Stock No. 26273

Sheet 4 of 4

3. Center South Sixteenth Corner to Section 29, T.34N., R.14E.

Corner established midpoint and on line between the center quarter and south quarter corners of Section 29.

Corner References:

White Spruce	12"	S.22°E.	58.90 feet
Sugar	4"	N.68°W.	34.12 feet
Sugar	5"	N.21°E.	12.00 feet
Steel Sign Post		East	0.98 feet

SURVEYOR'S AFFIDAVIT

State of Wisconsin }
County of Forest } SS

I, Al Harrison, Cadastral Surveyor, USDA-Forest Service and a registered surveyor in the State of Wisconsin, hereby certify that I have surveyed and subdivided Section 29, Township 34 North, Range 14 East, Fourth Principal Meridian, State of Wisconsin.

The plat map and the notes herewith are a correct representation of the land surveyed and divided. I have surveyed and subdivided said section in accordance with the rules for survey of the public lands and with the statutes of the State of Wisconsin.



Date of Survey: 1985

Alan D. Harrison
Cadastral Surveyor, USDA-Forest Service
R. L. S., State of Wisconsin
Certificate S-1651

Plat Ready For Filing:

[Signature]
District Ranger

