

Stock No. 26273

SHEET 1 OF 3

PLAT OF SURVEY U.S. GOVERNMENT LANDS

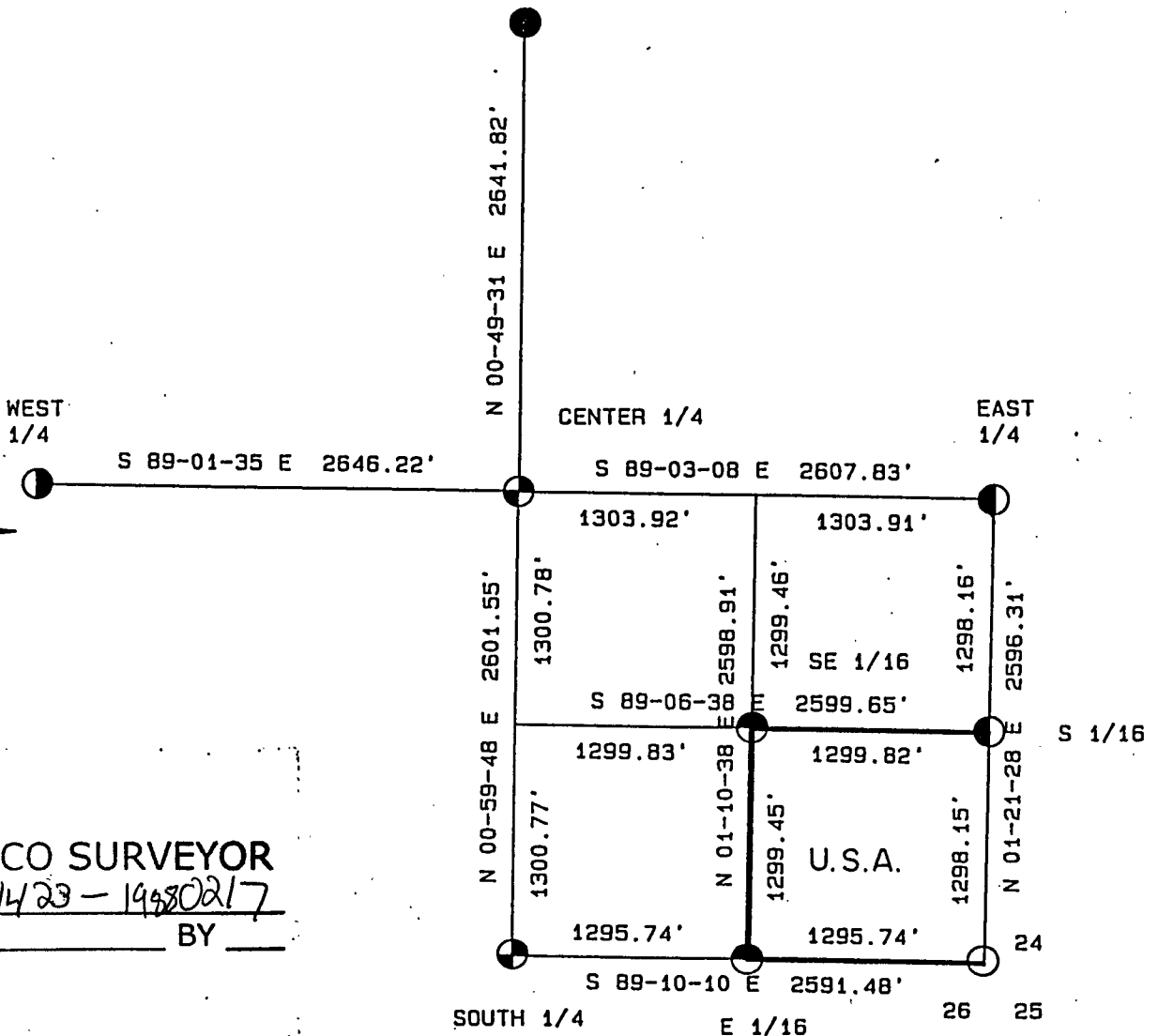
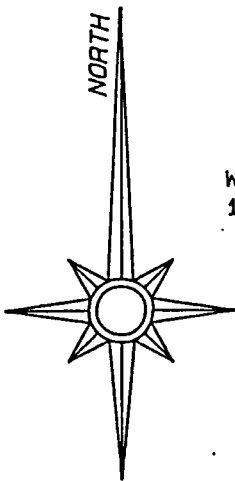
BEING THE S.E. 1/4, S.E. 1/4; SECTION 23,
 TOWNSHIP 34 NORTH, RANGE 14 EAST, FOURTH PRINCIPAL MERIDIAN,
 FOREST COUNTY, WISCONSIN.

1000 0 1000 2000 3000



GRAPHIC SCALE - 1" = 1000'

NORTH 1/4



FOREST CO SURVEYOR

FILE # 341423-1980217

DATE _____ BY _____

LEGEND

- FOREST COUNTY MONUMENT, FOUND IN PLACE.
- ◐ BRASS CAPPED MONUMENT, FOUND IN PLACE.
- ⊕ 2 1/2" X 36" ALUMINUM MONUMENT, SET THIS SURVEY.
- ◑ 1 1/2" X 36" ALUMINUM MONUMENT, SET THIS SURVEY.
- ◒ R.R. SPIKE IN SURFACED ROAD, SET THIS SURVEY.
- 1" X 30" IRON ROD IN GRAVEL ROAD, SET THIS SURVEY.
- MARKED BOUNDARY LINES OF U.S. GOVERNMENT LANDS.

Stock No. 26273

Sheet 2 of 3

SURVEY NOTES

This survey was made by the U. S. Department of Agriculture, Forest Service, for the purpose of restoring and establishing corners on the perimeter of Section 23, for establishing subdivisional corners within Section 23, and for locating and marking the boundaries of U. S. Government land on their perimeter and within Section 23, Township 34 North, Range 14 East, Fourth Principal Meridian, Forest County, Wisconsin.

The U. S. Government land in this section was acquired in 1935.

The original Government subdivision survey of this township was made in 1859.

The corner positions recovered, restored, and established by this survey are marked by the monument described in the map legend.

The corner positions established were located to an accuracy of one part in 3000.

The bearings between corner positions are true bearings as determined by solar observations.

The field notes of this survey and a copy of this plat are on file in the Forest Supervisor's Office at Rhinelander, Wisconsin.

CORNERS RECOVERED AND RESTORED1. Corner Common to Sections 23, 24, 25, and 26.

Found Forest County monument set by Thomas R. Arnott, R.L.S. 887.

Added New Corner References:

Spruce	5"	N.73°E.	25.94 feet
Spruce	4"	S.51°E.	6.92 feet
Tamarack	7"	S.28°W.	31.96 feet
Tamarack	5"	N.10°W.	7.54 feet
Steel Sign Post		West	0.74 feet

2. Quarter Corner to Sections 14 and 23.

Corner position restored in centerline of town road and from fence lines north-south. Position fits well with J. J. Melendy survey of 1908. Corner is 1" iron rod \pm 0.5' below road surface.

Corner References:

2½" x 36" Aluminum Monument	North	29.97 feet
2½" x 36" Aluminum Monument	South	34.06 feet
Steel Sign Post	North	30.77 feet
Steel Sign Post	South	35.06 feet

3. Quarter Corner to Sections 23 and 24.

Corner position restored during survey of Section 24. Certificate filed in Forest County.

4. Quarter Corner to Sections 23 and 26, T.34N., R.14E.

Corner monumented in 1977 by Thomas R. Arnott, R.L.S. 887. Monument had been removed. Corner was replaced from Arnott's references.

Corner References:

White Birch	15"	N.71°E.	70.53 feet
White Birch	14"	S.22°W.	15.61 feet
White Birch	7"	N.57°W.	22.35 feet
Steel Sign Post		North	8.84 feet

Stock No. 26273

Sheet 3 of 3

5. Quarter Corner to Sections 22 and 23, T.34N., R.14E.
Corner monumented by Jean Resvick, R.L.S. 802. Certificate on file.
6. Center Quarter Corner to Section 23.
Corner found marked by a squared wood post and references set by J. Melendy in 1907.
Corner References:

"X" on Rock			
3' x 4' x 2'		N.65°E.	37.98 feet
Black Cherry	10"	S.30°E.	23.47 feet
"X" on Rock			
3' x 5' x 2'		S.13°W.	6.46 feet
Steel Sign Post		Northwest	0.72 feet

CORNERS ESTABLISHED

1. East Sixteenth Corner to Sections 23 and 26.
Corner established midpoint and on line between the south quarter and southeast section corners to Section 23.
Corner References:

Red Maple			
(triple)	6"	N.56°E.	70.60 feet
Balsam	3"	S.45°E.	15.96 feet
Black Cherry	9"	S.65°W.	8.95 feet
Steel Sign Post		Northeast	0.65 feet

2. South Sixteenth Corner to Sections 23 and 24.
Corner position established during survey of Section 24.
3. Southeast Sixteenth Corner to Section 23.
Corner established at the intersection of the south and east sixteenth lines of Section 23.
Corner References:

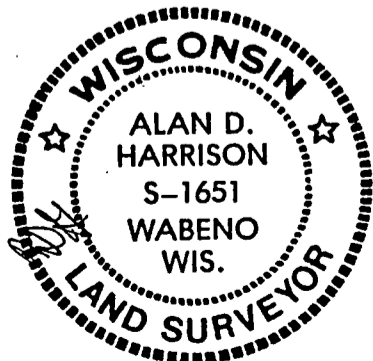
Balsam	9"	N.25°E.	17.03 feet
Red Maple	5"	S.25°E.	30.19 feet
Steel Sign Post		East	6.65 feet

SURVEYOR'S AFFIDAVIT

State of Wisconsin }
County of Forest } SS

I, Alan D. Harrison, Land Surveyor, USDA, Forest Service and a registered surveyor in the State of Wisconsin, hereby certify that I have surveyed and subdivided Section 23, Township 34 North, Range 14 East, Fourth Principal Meridian, State of Wisconsin.

The plat map and the notes herewith are a correct representation of the land surveyed and divided. I have surveyed and subdivided said section in accordance with the rules for survey of the public lands and with the statutes of the State of Wisconsin.



Alan D. Harrison
Land Surveyor, USDA, Forest Service
R.L.S., State of Wisconsin
Certificate S-1651

Plat ready for filing:

Dale Steege
District Ranger

Date of Survey: 1987