

Stock No. 26273

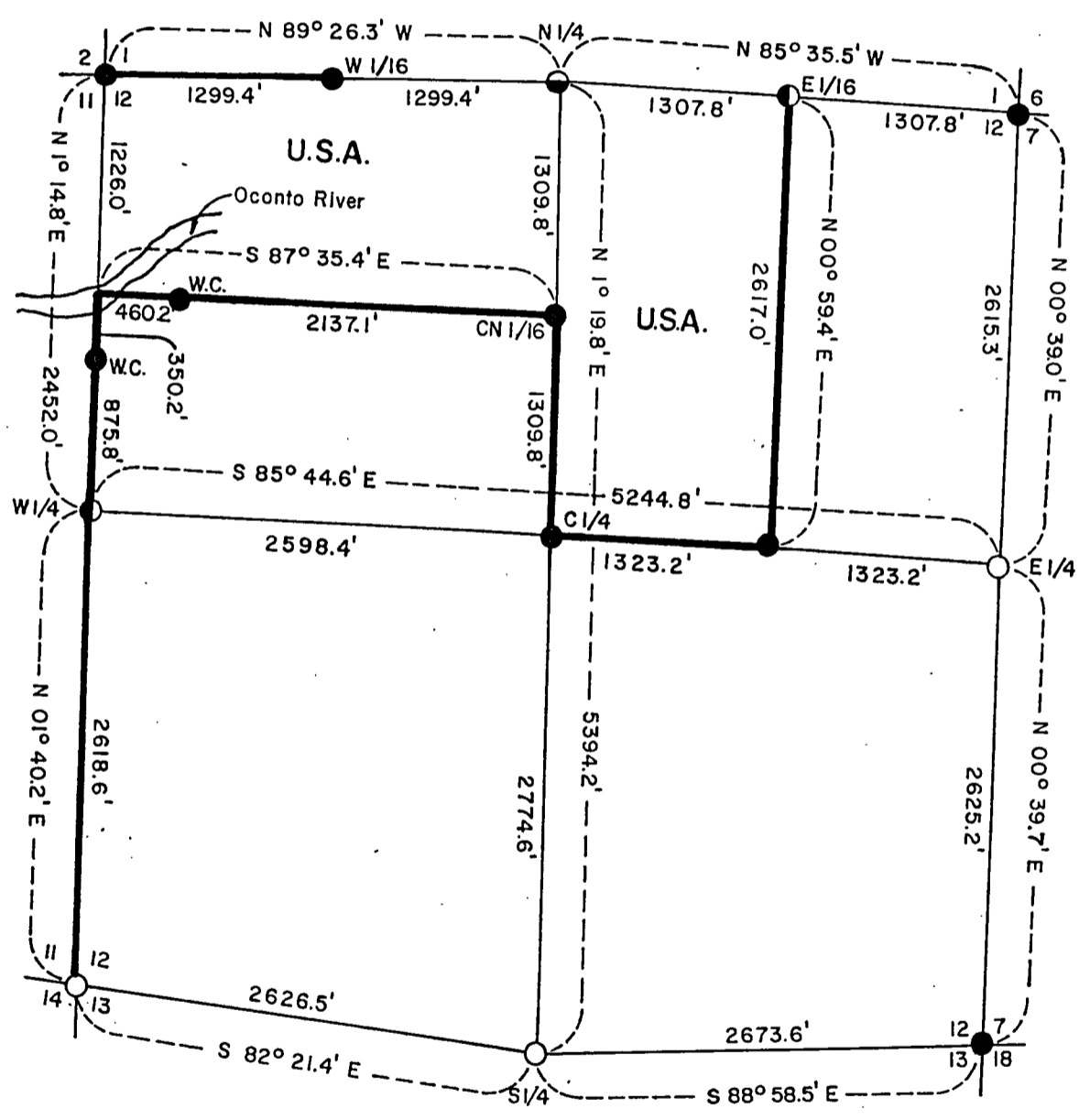
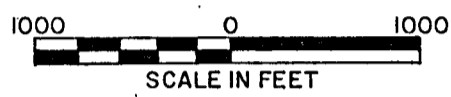
FOREST CO SURVEYOR

FILE # 341412-19820000

DATE _____ BY _____

PLAT OF SURVEY U.S. GOVERNMENT LAND

Being the W1/2 NE1/4, and N1/2 NW1/4 All of Section 12
Township 34 North, Range 14 East, Fourth Principal Meridian
FOREST COUNTY, WISCONSIN



LEGEND

- Corner Marked by a 2" Diameter Aluminum Monument, 30" Long with Aluminum Cap.
- ⦿ Corner Marked by a 2" Diameter Aluminum Monument, 60" Long with Aluminum Cap.
- ⦿ Corner Marked by a 2" Diameter Aluminum Monument, 120" Long with Aluminum Cap.
- Corner Marked by a Railroad Spike in Road Referenced by 2" Diameter Aluminum Pipe with Aluminum Cap.
- Boundary Line Marked and Posted.

Stock No. 26273

Sheet 2 of 5

SURVEY NOTES

This survey was made by the U. S. Department of Agriculture, Forest Service, for the purpose of restoring and establishing corners on the perimeter of Section 12, for establishing subdivisional corners within Section 12, and for locating and marking the boundaries of U. S. Government land on their perimeter and within Section 12, Township 3⁴ North, Range 1⁴ East, Fourth Principal Meridian, Forest County, Wisconsin.

The U. S. Government lands in this section were acquired in 1935 and 1964.

The original Government survey of this township was made in 1857 and 1859. Subsequent surveys along the west, south, and east sides of this section were done by Nathan Smith in 1906, 1908, and 1912.

The corner positions recovered, restored, and established by this survey are marked by the monument described in the map legend.

The corner positions established were located to an accuracy of one part in 3000.

The bearings between corner positions are true bearings as determined by solar observations.

The field notes of this survey and a copy of this plat are on file in the Forest Supervisor's Office at Rhinelander, Wisconsin.

CORNERS RECOVERED AND RESTORED1. Section Corner to Sections 7-18-12-13, T.3⁴N., R.1⁴-15E.

Corner position found marked by an iron pipe below road surface, at road intersection.

Corner References:

Basswood	10"	N.71°E.	86.73 feet
Butternut	12"	S.15°E.	140.74 feet
Sugar Maple	8"	S.57°W.	113.00 feet
Sugar Maple	4"	N.13°W.	159.25 feet
Steel Sign Post		S.12°E.	17.30 feet

2. Section Corner to Sections 11-12-13-14, T.3⁴N., R.1⁴E.

Corner position restored at intersection of centerline of county highway southerly, fence line northerly, and centerline of State Highway #52, east-west. The bearings and distances conform to subsequent surveys by Nathan Smith in 1908.

Corner References:

2" x 30" Aluminum Monuments		Northwest	50.00 feet
Balsam Fir	8"	S.72°W.	5.48 feet
Red Maple	7"	N.9°W.	51.48 feet
Steel Sign Post		North	0.70 feet

Corner is a railroad spike in surface of State Highway #52.

3. Section Corner to Sections 1-2-11-12, T.3⁴N., R.1⁴E.

Corner position found marked with a post hole and small stake from which original bearing tree remains were located.

Corner References:

Balsam Fir	5"	N.14°E.	29.93 feet
Red Maple	5"	N.60°E.	40.94 feet
Red Pine	10"	S.5°W.	10.52 feet
Red Pine	9"	N.86°W.	37.06 feet
Steel Sign Post		West	3.25 feet

Stock No. 26273

Sheet 3 of 5

4. Section Corner to Sections 1-6-7-12, T.34N., R.14-15E.
Corner position restored by extension of the centerline of State Highway #32 southerly, as per Smith's surveys from one mile north.
Corner References:

Spruce	7"	N.33°W.	197.98	feet
Steel Sign Post		Northeast	1.90	feet
Steel Sign Post		Southwest	1.30	feet
"X" North		N.30°E.	215.45	feet
"X" South		N.49°E.	168.83	feet

"X" is on north and south concrete bridge abutments.

5. Quarter Corner to Sections 12-13, T.34N., R.14E.
Corner position restored at intersection of fence lines, north-south, and centerline of State Highway #52, east-west.
Corner References:

2" x 30" Aluminum Monument		Southeast	50.00	feet
Black Cherry	12"	N.89°E.	4.90	feet
Sugar Maple	18"	S.10°W.	12.69	feet
Steel Sign Post		South	.90	feet

Corner is a railroad spike in the surface of State Highway #52.

6. Quarter Corner to Sections 11-12, T.34N., R.14E.
Corner position found marked by a scribed wood post from which remains of original bearing trees were located.
Corner References:

White Pine	18"	S.4°W.	213.12	feet
White Birch	14"	S.76°W.	79.86	feet
Steel Sign Post		Northwest	1.30	feet

7. Quarter Corner to Sections 1-12, T.34N., R.14E.
Corner position found marked by a scribed wood post.
Corner References:

Tamarack	5"	N.69°E.	18.47	feet
Tamarack	4"	S.48°E.	32.63	feet
Tamarack	5"	N.71°W.	47.77	feet
Steel Sign Post		North	2.40	feet

8. Quarter Corner to Sections 12-7, T.34N., R.14-15E.
Corner position restored in centerline of State Highway #52 and from fence lines, east-west. Distance as compared with Nathan Smith's surveys of range line fit very closely. Corner is railroad spike in road.

- 8a. Witness Corner - N.85° - 35.6'E. (75.00 Feet).
Corner References:

Sugar	20"	N.33°E.	58.33	feet
Sugar	8"	N.61°E.	79.97	feet
Utility Pole		South	3.85	feet
Steel Sign Post		East	1.60	feet

CORNERS ESTABLISHED

1. Center Quarter Corner to Section 12, T.34N., R.14E.
Corner References:

White Pine	7"	N.85°E.	36.42	feet
Red Maple	4"	S.57°W.	22.78	feet
Aspen	5"	N.34°W.	20.46	feet
Steel Sign Post		East	3.70	feet

Stock No. 26273

Sheet 4 of 5

2. Center East One-Sixteenth Corner to Section 12, T.34N., R.14E.

Corner position established midpoint and on line between the center quarter and east quarter corners to Section 12.

Corner References:

Sugar	9"	S.25°E.	33.57 feet
Sugar	9"	S.9°W.	52.60 feet
Sugar	7"	N.51°W.	17.25 feet
Steel Sign Post		West	4.32 feet

3. North One-Sixteenth Corner to Sections 12-11, T.34N., R.14E.

Corner position established midpoint and on line between the northwest corner and west quarter corner to Section 12. This corner falls in the Oconto River.

3a. Witness Corner - S.87° - 35.4'E. (460.2 Feet).

Corner References:

Cedar	5"	N.68°E.	47.75 feet
Cedar	5"	N.38°E.	26.01 feet
Spruce	8"	S.80°E.	34.45 feet
Steel Sign Post		East	2.65 feet

3b. Witness Corner - S.1° - 14.8'W. (350.2 Feet).

Corner References:

Cedar	4"	S.27°E.	11.32 feet
Cedar	3"	N.86°W.	5.35 feet
Steel Sign Post		North	16.50 feet

4. Center North One-Sixteenth Corner to Section 12, T.34N., R.14E.

Corner position established midpoint and on line between the center quarter and the north quarter corners of Section 12.

Corner References:

Aspen	8"	N.43°E.	25.36 feet
Red Pine	6"	N.75°W.	95.46 feet
White Birch	10"	N.15°W.	43.47 feet
Steel Sign Post		West	2.20 feet

5. West One-Sixteenth Corner to Sections 1-12, T.34N., R.14E.

Corner position established midpoint and on line between the northwest corner and the north quarter corner of Section 12.

Corner References:

White Pine	4"	N.28°E.	29.84 feet
Spruce	4"	S.39°E.	22.39 feet
White Birch	10"	N.69°W.	37.05 feet
Steel Sign Post		North	1.10 feet

6. East One-Sixteenth Corner to Sections 1-12, T.34N., R.14E.

Corner position established midpoint and on line between the northeast corner and the north quarter corner of Section 12.

Corner References:

Tamarack	6"	N.58°E.	82.32 feet
Tamarack	3"	S.39°E.	12.74 feet
Tamarack	3"	S.8°W.	25.42 feet
Steel Sign Post		South	1.80 feet

Stock No. 26273

SURVEYOR'S AFFIDAVIT

State of Wisconsin
County of Forest] SS

I, Milo E. Stefan, Cadastral Surveyor, U. S. Forest Service and a registered surveyor in the State of Wisconsin, hereby certify that I have surveyed and subdivided Section 12, Township 34 North, Range 14 East, Fourth Principal Meridian, State of Wisconsin.

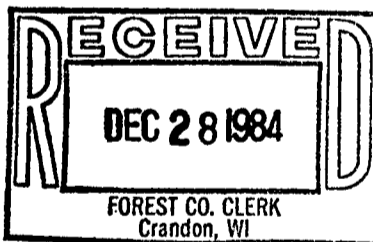
The plat map and notes herewith are a correct representation of the land surveyed and divided. I have surveyed and subdivided said section in accordance with the rules for survey of the public lands and with the statutes of the State of Wisconsin.



Date of Survey: 1982

Milo E. Stefan
Cadastral Surveyor, U. S. Forest Service
R. L. S., State of Wisconsin
Certificate S-1558

Plat Ready For Filing: *Dale B. Stage*
District Ranger



Saellie L. Deer
Deputy Co. Clerk