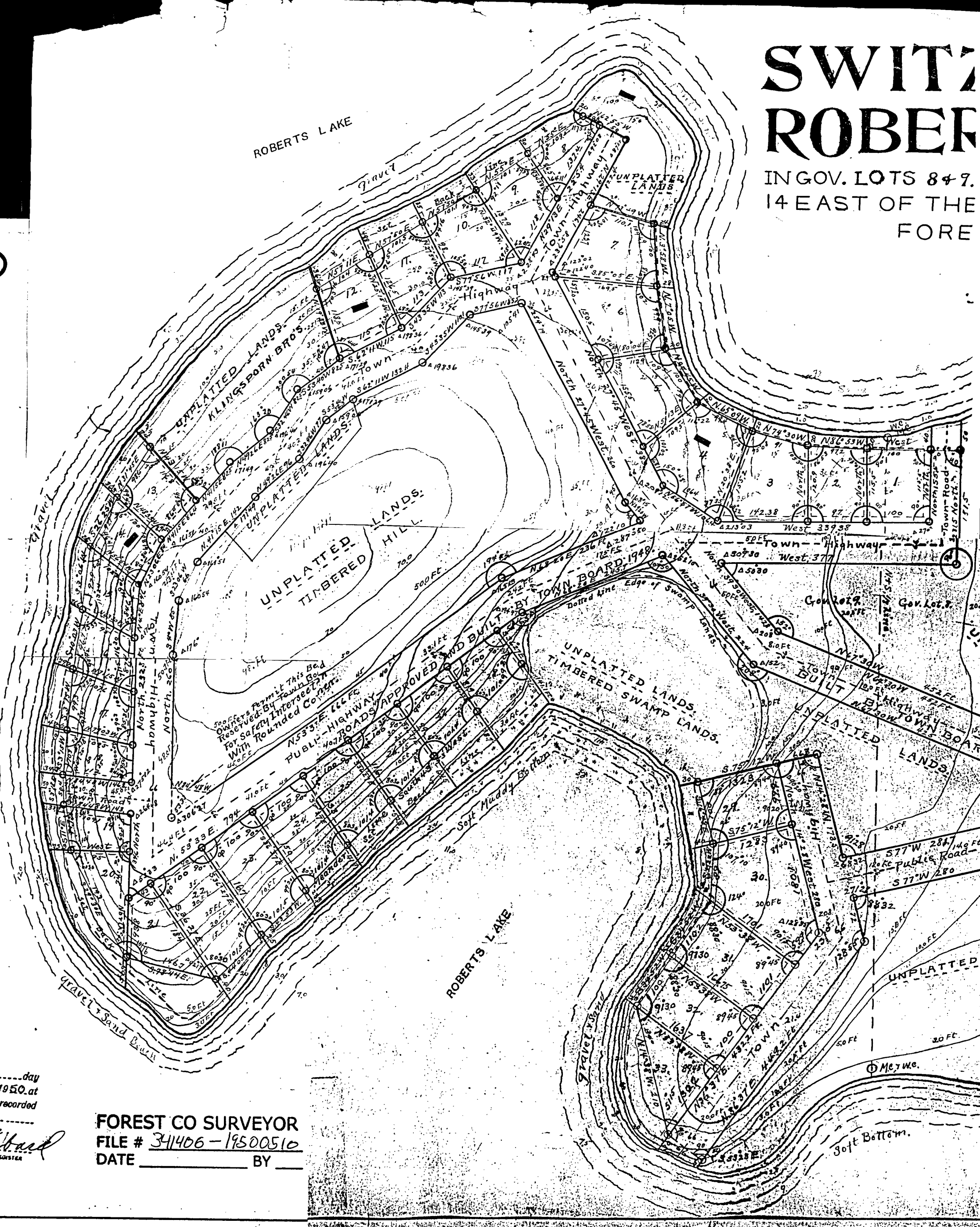
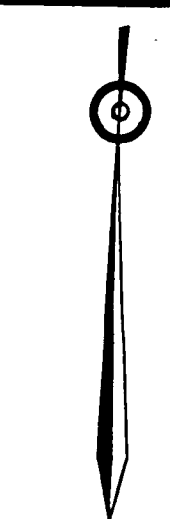


SWITZ ROBER

INGOV. LOTS 8 & 7.
14 EAST OF THE
FORE



100 feet for this Bench Mark.
High Water Mark Elevation
Low Water Mark Elevation
Water Level Elevation -
Elevations taken December 1948
All elevations on plat based
follows - 5.0 ft. will mean 5 feet
will be 10 feet above, 98.0 ft. w
All contour lines will be
Elevations given
Depth of Water for
25 feet, and 100
Mo
All corners are
30 inches long by
Set back
from
Set back
feet from
No bui
20% of
The out
are the
National
just on
Best app
of lot 8
Mc
Luk
5/1/50

71696

REGISTER'S OFFICE
Forest County, Wis.
Received for record this 10 day
of MAY A. D. 1950 at
2:30 o'clock P. M. and recorded
in Vol. 2 of PLATS
on page 4-7 inclusive
W.H. Johnson

FOREST CO SURVEYOR
FILE # 341406 - 19500510
DATE _____ BY _____