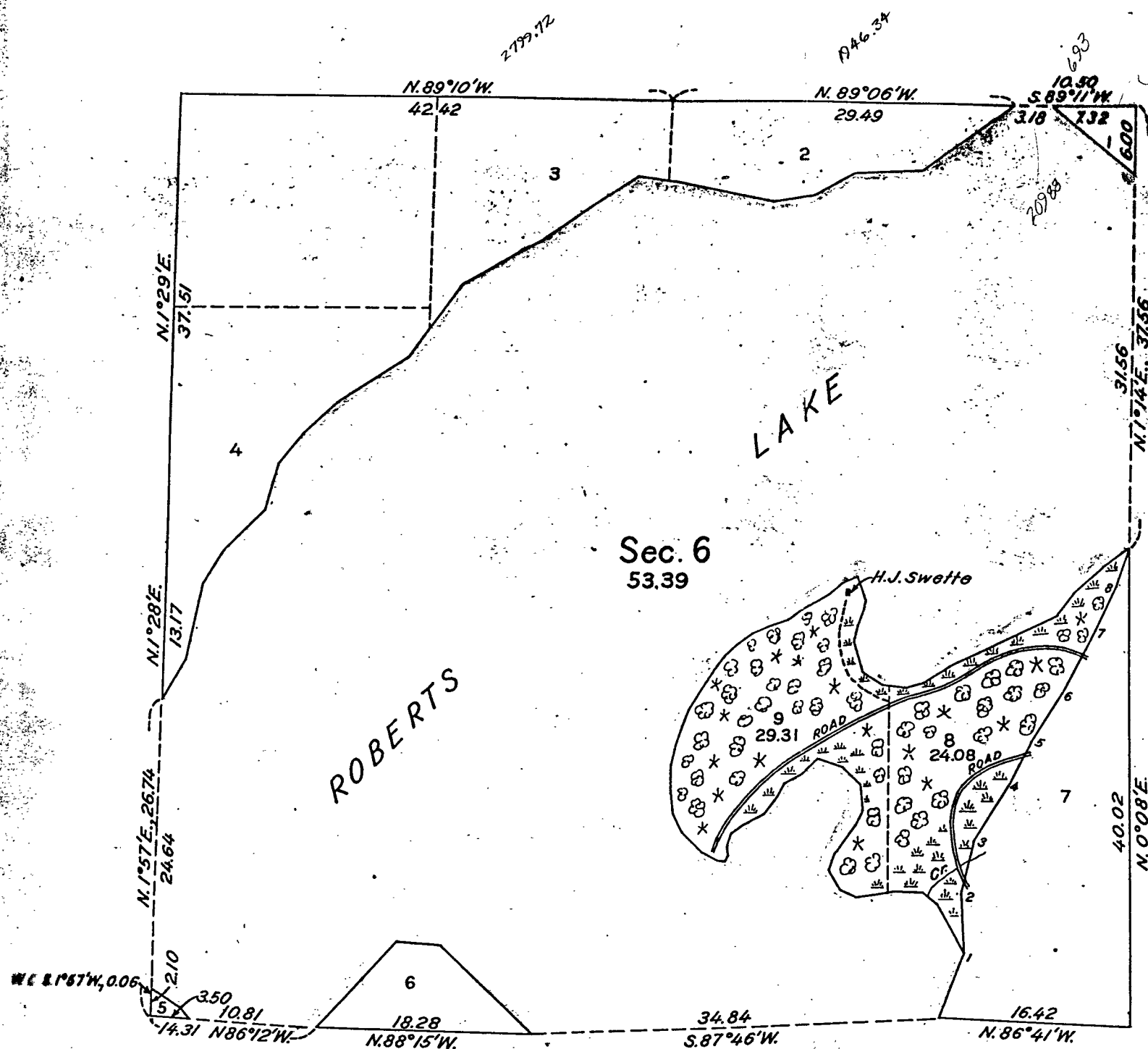


Scale in chains.



Memorandum

This plat delineates a retracement and reestablishment of the boundaries of sec. 6, T. 34 N., R. 14 E., as shown upon the plat approved October 1, 1869, in their true original positions according to the best available evidence of the position of the original corners, and an extension survey including lands erroneously omitted from the original survey and not shown on said plat. All differences between the measurements shown on the original plat and those derived in the retracement have been distributed proportionally between accepted corners in accordance with surveying rules. Reference will be made to the original plat for the showing of areas of the subdivisions included in the original survey.

The position of the original record meander courses of a lake fronting on lot 7, sec. 6, is shown by an irregular line with numbered angle points. This line, as thus originally reported, was grossly in error and, with the exception of the first course, has therefore been marked as a fixed boundary, with the directions and lengths of the several courses adjusted to the record of the original survey.

The survey was authorized by General Land Office memorandum 1861775 "E", dated December 3, 1945.

77117

REGISTER'S OFFICE
Forest County, Wis.

Received for record this 14th
of JANUARY 1955
9:00 o'clock A. M. and P.
in Vol. I of PLATS
on page 69

FOREST CO SURVEYOR
FILE # 341406-19451203
DATE _____ BY _____

Ann Peterson
REGISTER

UNITED STATES DEPARTMENT OF THE INTERIOR
BUREAU OF LAND MANAGEMENT

Denver, Colorado, March 7, 1947.

This plat is strictly conformable to the field notes of the survey which have been examined and approved.

Washington, D. C., JUL 22 1947

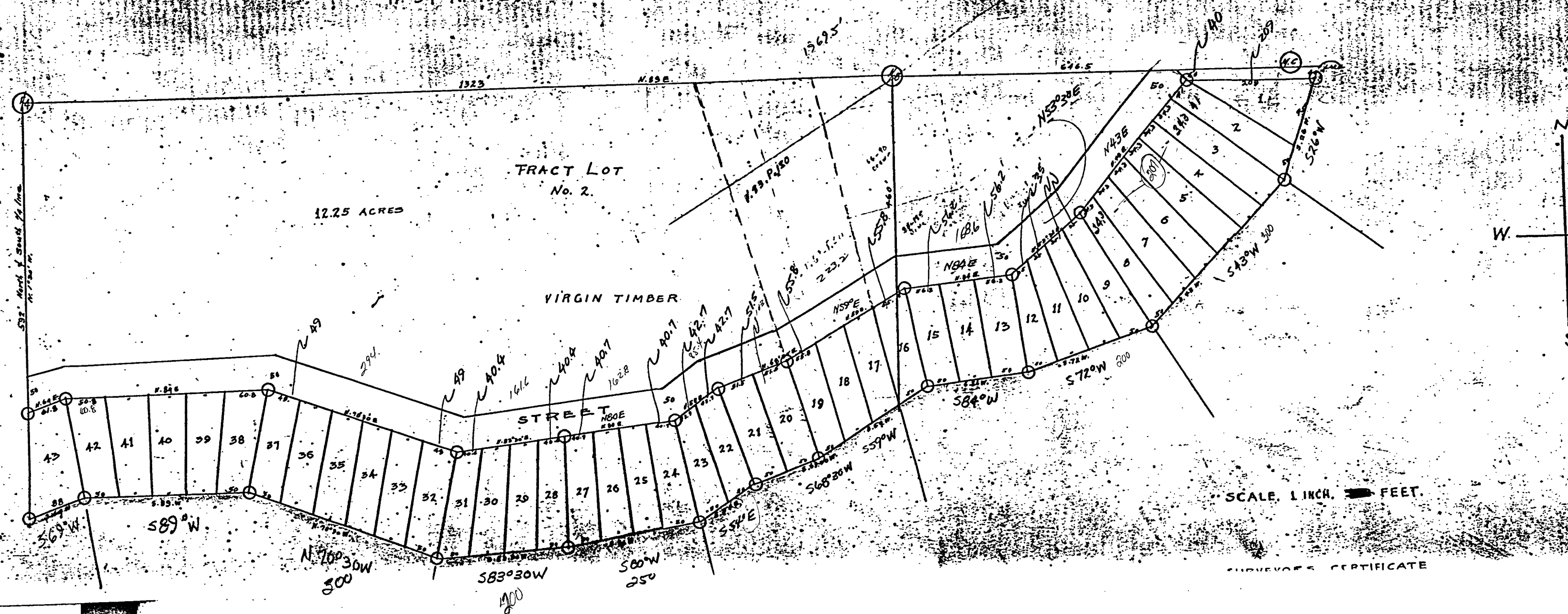
The survey represented by this plat, having been correctly executed in accordance with the requirements of law and the regulations of this office, is hereby accepted.

W. H. ...

SLOWE'S PLAT

OF
ROBERTS LAKE
BEING ALL OF FRACTIONAL LOT No. 2 OF SECTION 6
TP. 34 N. R. 14. - FOREST COUNTY, WISCONSIN

DATE
BY
FOREST COUNTY



SCALE 1 INCH = 100 FEET

SURVEYOR'S CERTIFICATE