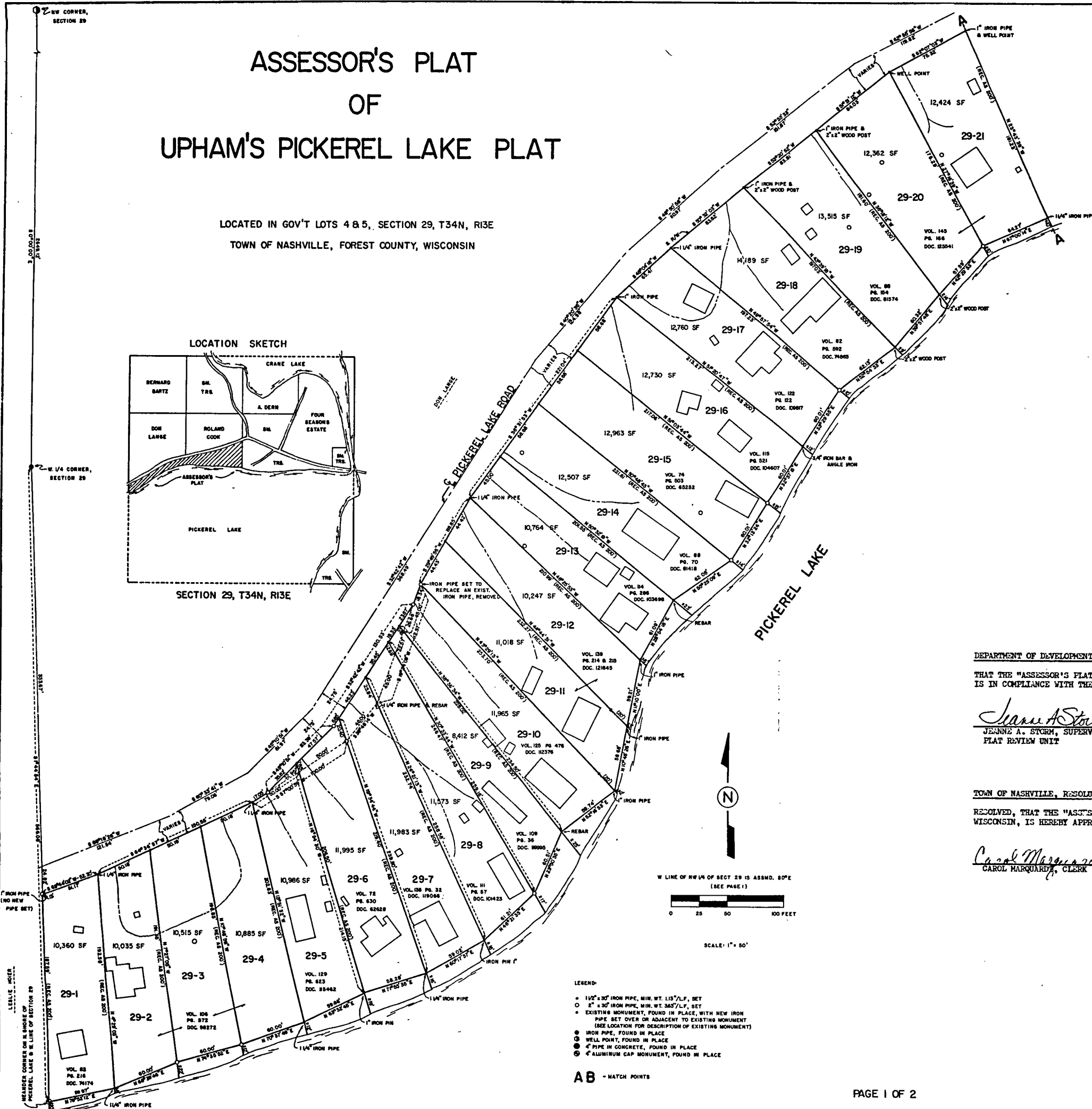
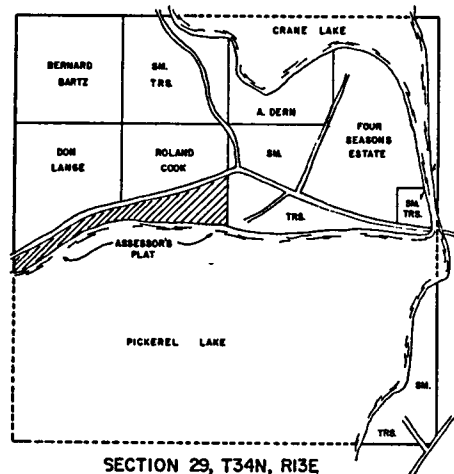


ASSESSOR'S PLAT OF UPHAM'S PICKEREL LAKE PLAT

LOCATED IN GOV'T LOTS 4 & 5, SECTION 29, T34N, R13E
TOWN OF NASHVILLE, FOREST COUNTY, WISCONSIN

LOCATION SKETCH



I, WILLIAM F. KELLY, DO HEREBY CERTIFY THAT I HAVE SURVEYED AND MAPPED THE ASSESSOR'S PLAT OF UPHAM'S PICKEREL LAKE PLAT LOCATED IN GOV'T LOTS 4 AND 5, SECT. 29, T34N, R13E, TOWN OF NASHVILLE, FOREST COUNTY, WISCONSIN, DESCRIBED AS FOLLOWS:

COMMENCING AT THE W. 1/4 CORNER OF SAID SECT. 29; THENCE S01°44'54"E, 566.08 FEET ALONG THE W. LINE OF SAID SECT. 29 TO THE MEANDER CORNER ON THE NORTH SHORE OF PICKEREL LAKE, BEING THE POINT OF BEGINNING;

THENCE ALONG THE NORTHERN SHORE OF PICKEREL LAKE N76°52'12"E, 59.97 FEET; N66°39'46"E, 60.00 FEET; N74°35'52"E, 60.00 FEET; N70°37'49"E, 60.00 FEET; N63°32'45"E, 59.66 FEET; N71°55'35"E, 58.28 FEET; N60°17'37"E, 59.02 FEET; N46°21'35"E, 61.21 FEET; N23°50'35"E, 60.51 FEET; N52°16'53"E, 59.74 FEET; N10°48'26"E, 58.68 FEET; N11°10'00"E, 59.21 FEET; N28°54'18"E, 61.09 FEET; N55°25'09"E, 62.05 FEET; N32°13'24"E, 60.01 FEET; N32°57'15"E, 60.01 FEET; N33°29'55"E, 60.01 FEET; N52°54'33"E, 62.13 FEET; N39°57'48"E, 60.32 FEET; N42°29'53"E, 57.59 FEET; N67°00'14"E, 64.27 FEET; N75°29'13"E, 59.87 FEET; N82°10'17"E, 118.95 FEET; N77°45'31"E, 180.00 FEET; N87°00'17"E, 120.94 FEET; N88°56'37"E, 60.00 FEET; S73°36'17"E, 60.95 FEET; S72°35'18"E, 59.97 FEET; S65°42'19"E, 60.37 FEET; S73°21'24"E, 61.90 FEET; S55°35'27"E, 61.90 FEET; S81°25'24"E, 59.09 FEET; N89°58'47"E, 60.00 FEET; S89°58'10"E, 60.00 FEET; S85°28'50"E, 60.00 FEET; S71°32'09"E, 54.11 FEET; S79°04'09"E, 102.33 FEET; S86°35'49"E, 108.50 FEET; S83°24'04"E, 111.01 FEET; S87°19'40"E, 120.00 FEET; S78°00'00"E, 60.00 FEET; S81°13'03"E, 112.12 FEET; THENCE N00°55'37"E, 656.98 FEET ALONG THE N-S 1/4 LINE OF SAID SECT. 29 TO THE S. R/W OF PICKEREL LAKE ROAD; THENCE ALONG THE S. R/W OF SAID PICKEREL LAKE ROAD S54°46'18"W, 290.30 FEET; S72°44'16"W, 209.16 FEET; S76°44'14"W, 232.07 FEET; S81°32'47"W, 186.89 FEET; N72°21'31"W, 178.08 FEET; N60°51'24"W, 14.29 FEET; N73°55'14"W, 60.11 FEET; S85°46'14"W, 83.13 FEET; S80°21'17"W, 442.67 FEET; S79°54'07"W, 190.65 FEET; S62°07'03"W, 75.32 FEET; S51°51'12"W, 84.03 FEET; S53°20'52"W, 83.81 FEET; S50°32'03"W, 83.62 FEET; S48°04'18"W, 65.41 FEET; S36°31'53"W, 221.04 FEET; S29°49'56"W, 88.85 FEET; S19°24'09"W, 18.34 FEET; S32°42'42"W, 130.53 FEET; S45°10'51"W, 83.39 FEET; S57°00'59"W, 17.05 FEET; S64°36'57"W, 150.55 FEET; S69°44'02"W, 52.30 FEET TO THE W. LINE OF SAID SECT. 29; THENCE S01°44'54"E, 187.59 FEET ALONG SAID W. LINE TO THE MEANDER CORNER ON THE NORTH SHORE OF PICKEREL LAKE, BEING THE POINT OF BEGINNING.

THAT SAID PLAT CONTAINS 17.53 ACRES.

THAT I HAVE MADE SAID SURVEY AND PLAT AT THE REQUEST AND UNDER THE DIRECTION OF THE TOWN BOARD OF THE TOWN OF NASHVILLE. SAID PLAT WAS ORDERED ON THE 29th DAY OF SEPTEMBER, 1982.

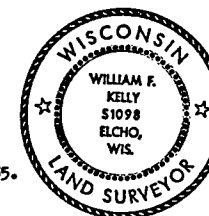
THAT SAID PLAT IS A CORRECT REPRESENTATION OF THE EXTERIOR BOUNDARIES OF THE LAND SURVEYED AND EACH PARCEL THEREOF.

THAT I HAVE FULLY COMPLIED WITH THE PROVISIONS OF SEC. 70.27 OF THE WISCONSIN STATUTES IN FILING SAID PLAT.

DATED THIS 26th DAY OF JUNE, 1985.

William F. Kelly
WILLIAM F. KELLY, R.L.S. 1098

REVISED THIS 8th DAY OF AUGUST, 1985.



DEPARTMENT OF DEVELOPMENT CERTIFICATE:

THAT THE "ASSESSOR'S PLAT OF UPHAM'S PICKEREL LAKE PLAT", IN THE TOWN OF NASHVILLE, FOREST COUNTY, WISCONSIN, IS IN COMPLIANCE WITH THE APPLICABLE PROVISIONS OF ss. 236.15 AND 236.20.

Jeanne A. Storm
JEANNE A. STORM, SUPERVISOR
PLAT REVIEW UNIT

July 26, 1985
DATE

TOWN OF NASHVILLE, RESOLUTION OF APPROVAL:

RESOLVED, THAT THE "ASSESSOR'S PLAT OF UPHAM'S PICKEREL LAKE PLAT", IN THE TOWN OF NASHVILLE, FOREST COUNTY, WISCONSIN, IS HEREBY APPROVED. AND THAT SAID PLAT IS IN COMPLIANCE WITH ALL PROVISIONS OF SEC. 70.27.

Carol Marquardt
CAROL MARQUARDT, CLERK

1/9/86
DATE

There are no objections to this assessor's plat with respect to applicable provisions of Secs. 236.15 and 236.20 Wts. Stats.

Certified this 26th day of July, 1985.

Jeanne A. Storm
Department of Development

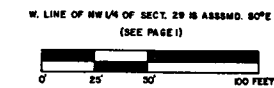
ASSESSOR'S PLAT OF UPHAM'S PICKEREL LAKE PLAT

FOREST CO SURVEYOR

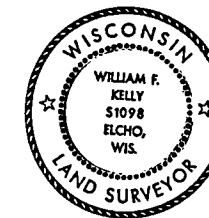
FILE # 341329-19850808

DATE _____ BY _____

LOCATED IN GOV'T LOTS 4 & 5, SECTION 29, T34N, R13E
TOWN OF NASHVILLE, FOREST COUNTY, WISCONSIN



SCALE: 1" = 50'



William F. Kelly
6-24-95

REVISED THIS 8th DAY OF August, 1985.

There are no objections to this assessor's plat with respect to applicable provisions of Secs. 236.15 and 236.20 Wis. Stats.

Certified this 27th day of July, 1985.

Jeane A. Storn
Department of Development

