

Jan 8, 1971

From S. J. Conway

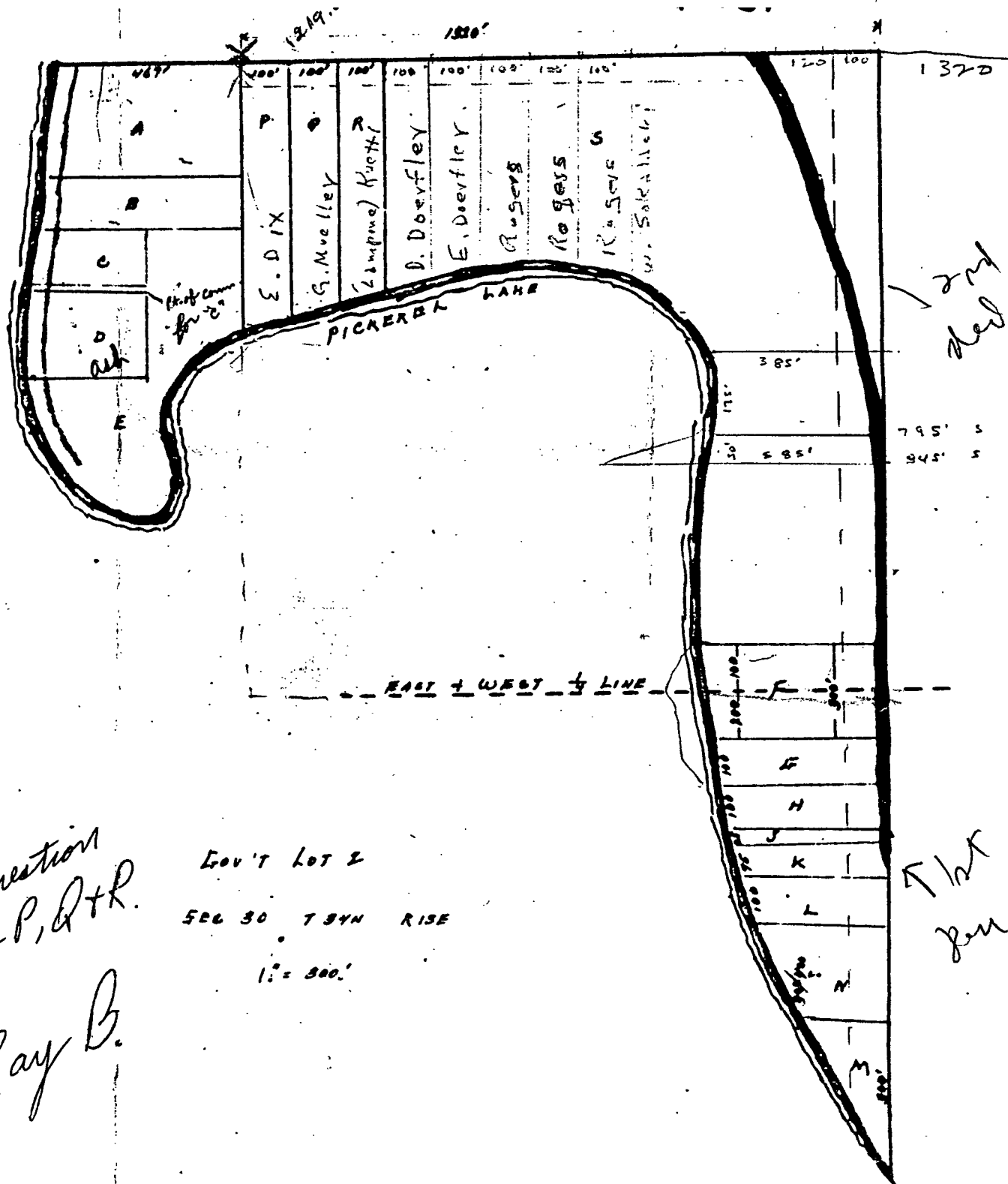
Ray:

This is an oversized Govt Lot and is more than 1320 feet on the N line. I want to insure C. Parcel P. Q. & R all start their description with 'commencing at a point known as the northwest corner of Govt Lot 2', thence East 100 or 200 or 300 feet. The point 'known' as the Northwest corner is the red check. The real northwest corner is where the north line intersects the lake. Lot C is 250 feet deep so all 3 descriptions would overlap if started at the true NW corner. The policy would be 9500. The person who conveyed the Lots P Q & R does not appear in the chain of title for lot C. Their title starts at the NE corner and goes 1320 feet west along the north line to the NW corner thereof, which is where they started calling this the point known as the NW corner. Should I raise the question of overlaps or should we assume that point X is 'known' as the NW corner and that it identifies the starting point of P Q & R.

FOREST CO SURVEYOR
FILE # 341329-19710108
DATE _____ BY _____

OK to ignore question
of overlaps of P, Q+R.

Ray B.



From Steve Conroy - copy of our article
from Kirkcours p. 8
A.S. 1/10/12

