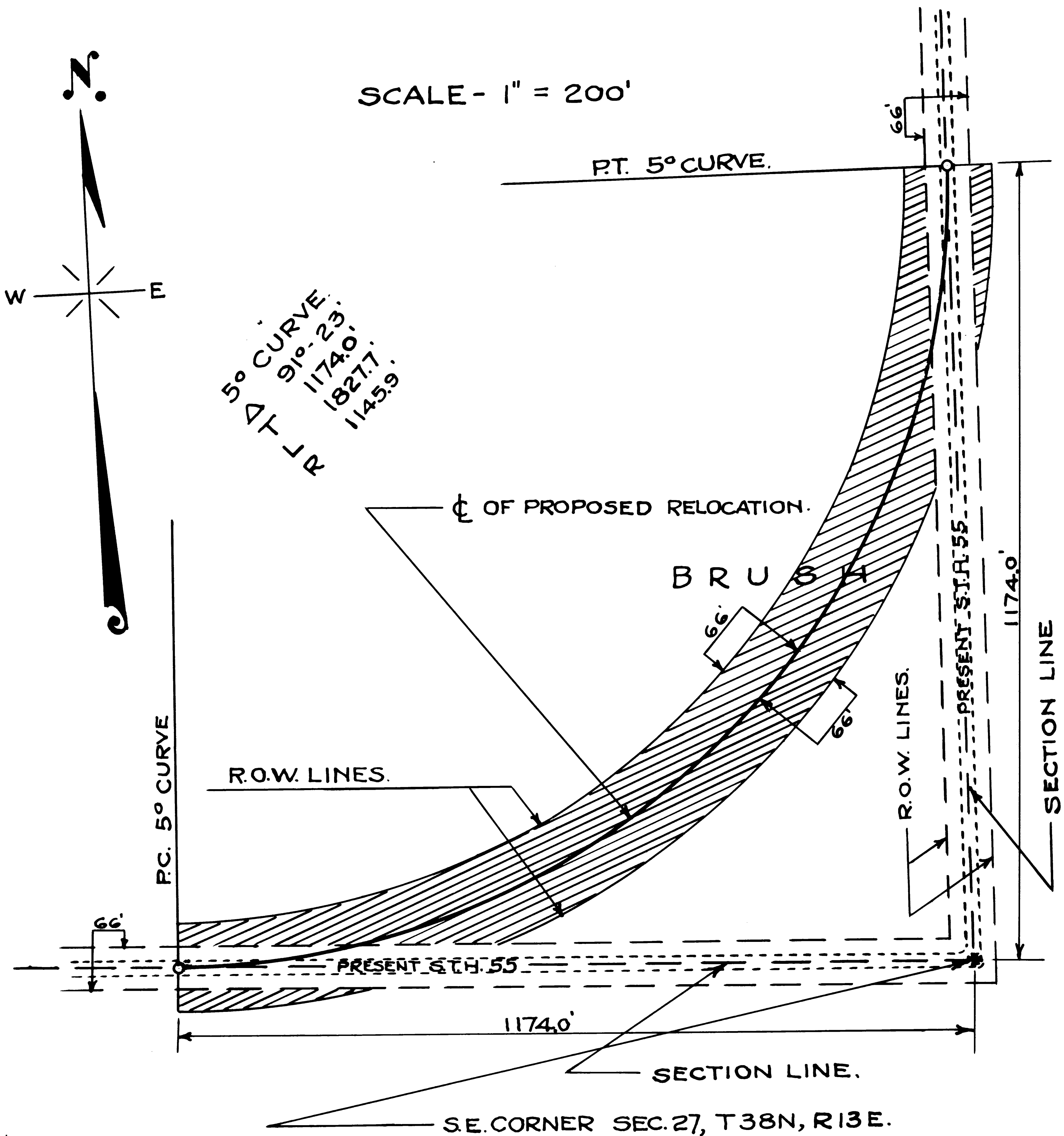


STATE HIGHWAY COMMISSION OF WISCONSIN  
FOREST COUNTY - A.F.E. NO. 21-28

PROPOSED RELOCATION ON S.T.H. 55 TO ELIMINATE SHARP  
TURN AT THE S.E. COR. OF S.E. 1/4 OF S.E. 1/4 SEC. 27, T38N, R13E.

SEPT. 21-1936



STATE HIGHWAY COMMISSION OF WISCONSIN  
FOREST COUNTY - A.F.E. NO. 21-28

PROPOSED RELOCATION ON S.T.H. 55.  
BEGINNING AT A POINT 61.0 FEET SOUTH OF THE E. 1/4 COR.  
SEC. 23, T40N, R13E AND EXTENDING NORTHWESTERLY 770.0 FEET.

SEPT. 24, 1936.

