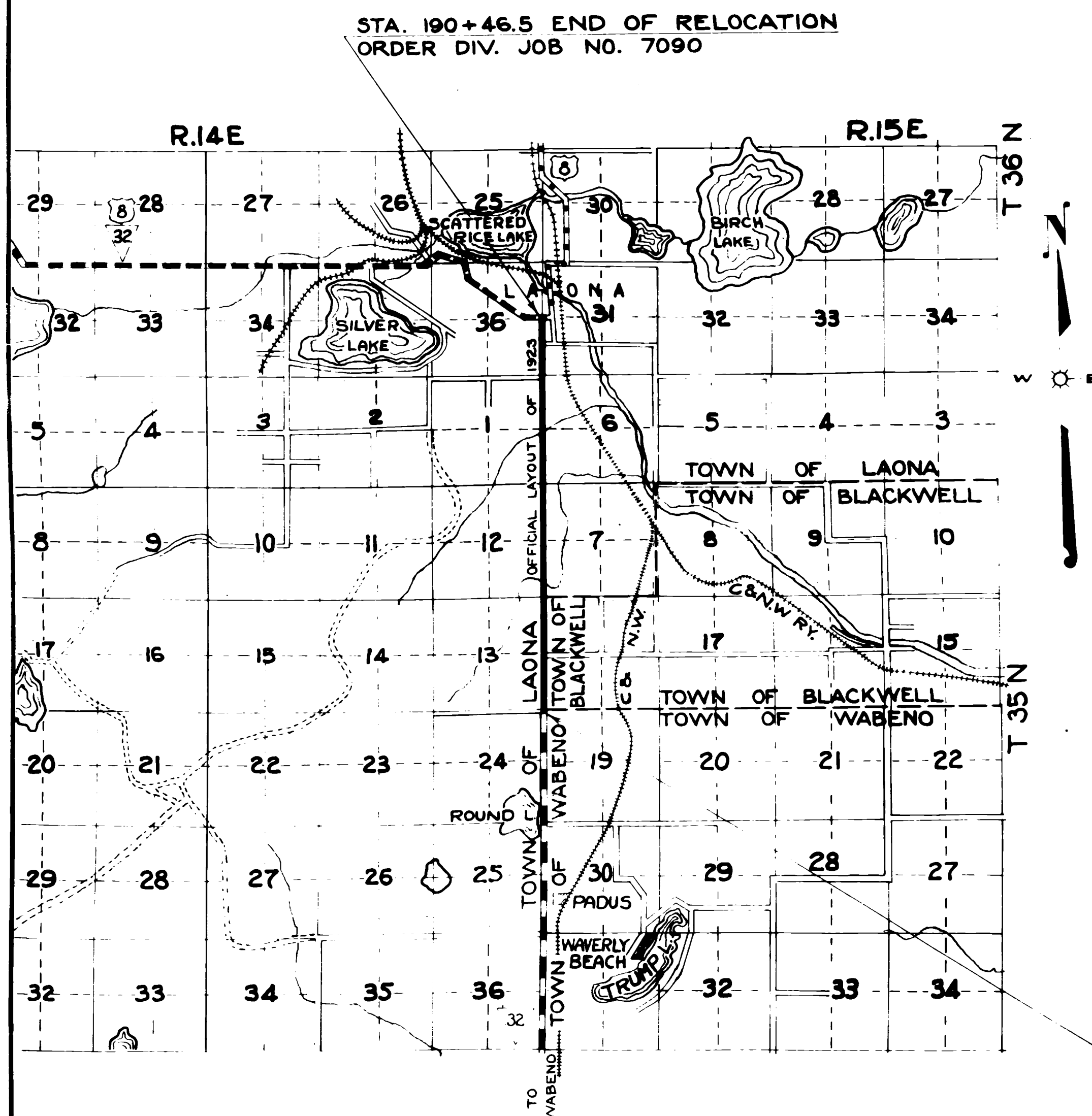


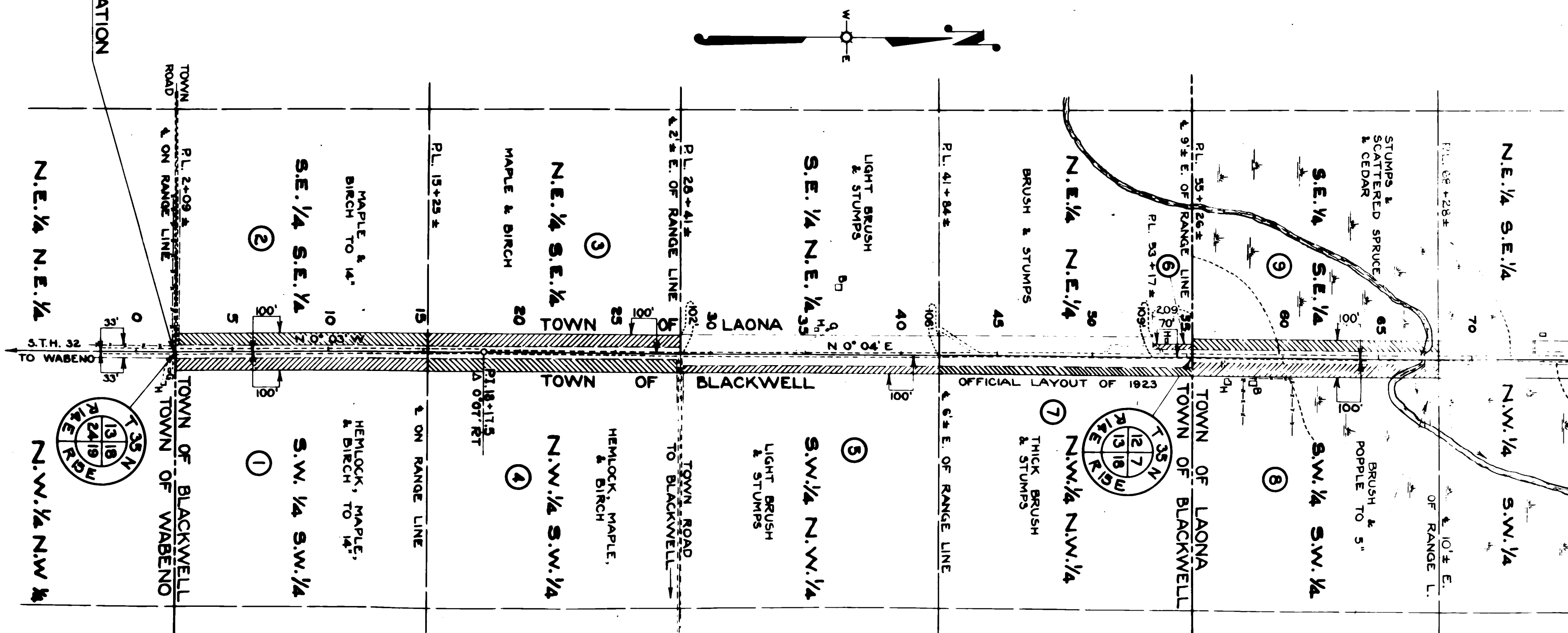
FED. ROAD DIST. NO.	STATE	STATE TRWD. NO.	SHEET NO.	TOTAL SHEETS
4	WISC	7090	4	

DIVISION JOB NO. 7090



STA. 190+46.5 END OF RELOCATION  
ORDER DIV. JOB NO. 7090

STA. 2+00 BEGINNING OF RELOCATION  
ORDER DIV. JOB NO. 7090



REVISED 7-12-39  
REVISED 2-18-39

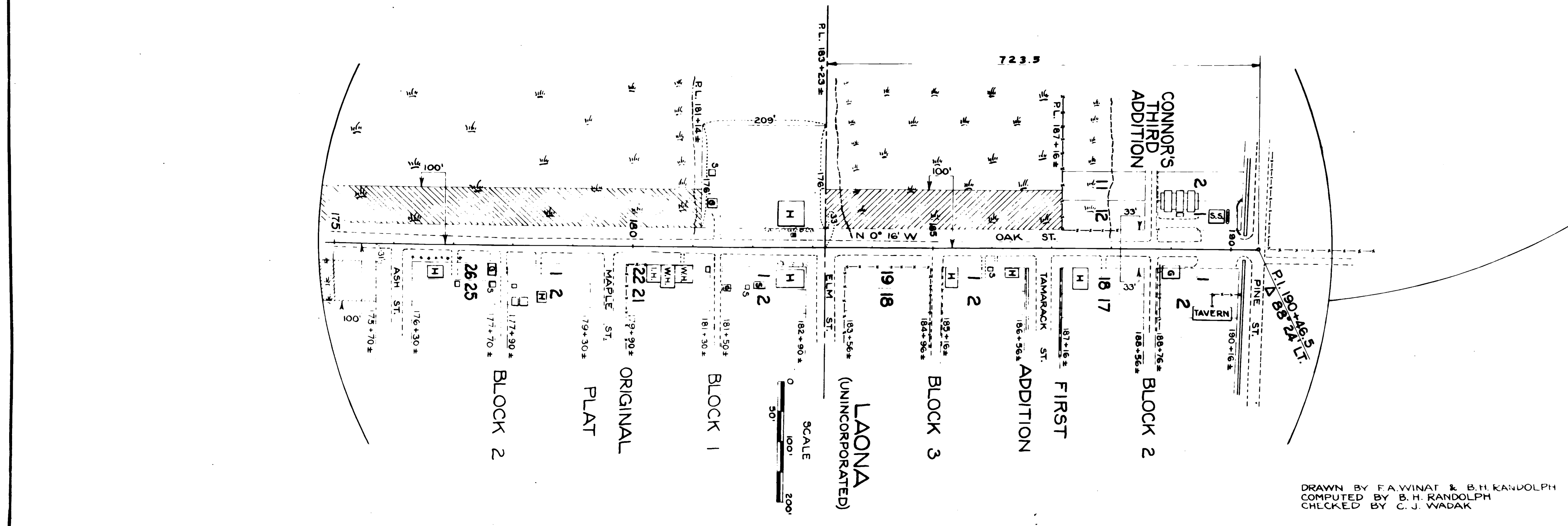
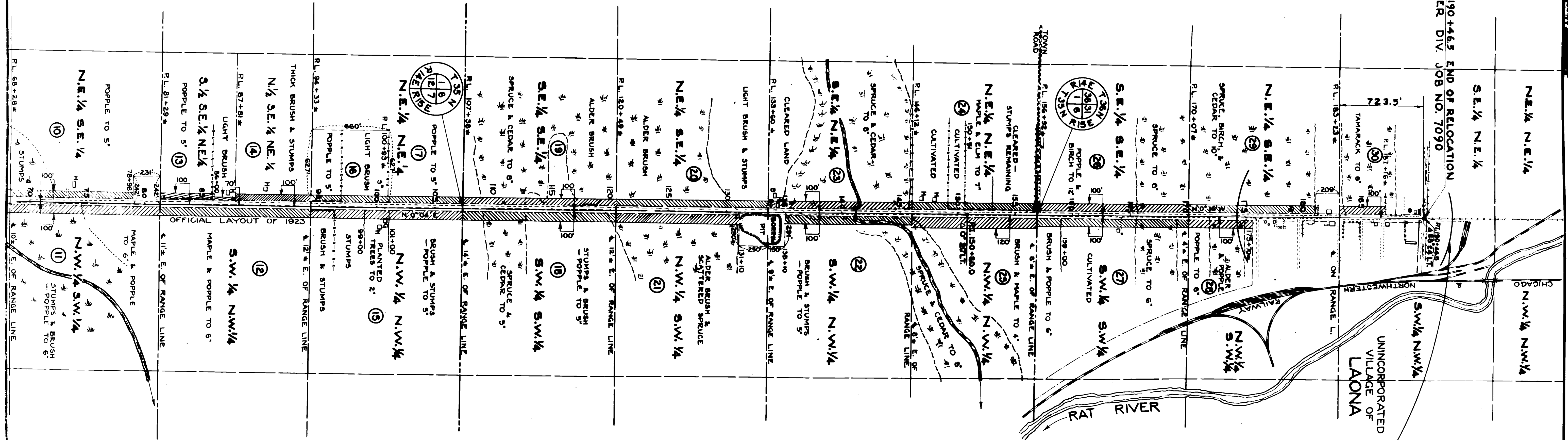
PLAT OF RIGHT OF WAY REQUIRED  
DIVISION JOB NO. 7090  
WABENO - LAONA ROAD  
S.T.H. NO. 32 FOREST COUNTY

DRAWN BY F.A. WINAT & B.H. RANDOLPH  
COMPUTED BY B.H. RANDOLPH  
CHECKED BY C.J. WYADAK

SCALE  
0' 200' 400' 600'  
100' 300'

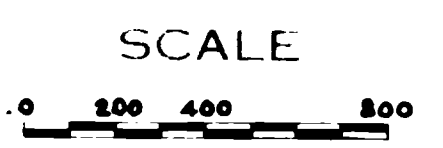
DIVISION JOB NO. 7090

STA. 190+465 END OF RELOCATION  
ORDER DIV. JOB NO. 7090



REVISED 7-12-33  
REVISED 2-18-39

PLAT OF RIGHT OF WAY REQUIRED  
DIVISION JOB NO. 7090  
WABENO - LAONA ROAD  
S.T.H. NO. 32 FOREST COUNTY



DRAWN BY F.A. WINAT & B.H. RANDOLPH  
COMPUTED BY B.H. RANDOLPH  
CHECKED BY C.J. WADAK

