

U.S. PUBLIC LAND SURVEY MONUMENT RECORD

Index No. P.Q-21

State of Wisconsin }
 County of Forest } ss.

I, Gary L. Pisoni, do hereby certify that on the 21st day of August, 1991, I found evidence of the Meander corner ~~corner of~~ Between Sections 23 and 24 Township 41 North, Range 14 East, Fourth Principal Meridian, as described hereon; and that from this evidence I established a new monument and accessories as described hereon to perpetuate the original location of this corner.

Resident witnesses:

History of original corner establishment:

Original Government Survey in 1865 by William E. Daugherty, North between Sections 23 and 24, at 30.5 chains, set meander post, from which the following bear:
 Cedar 10" S 41°W 16 links
 Cedar 9" S 77°E 22 links

Description of corner evidence found:

No original corner evidence was recovered.

I tried to use the river ties to position the meander corner between Sections 23 and 24 but by using these ties, it distorted the Section line too far out of position. Since the Section lines in this project area are running basically North and South and to stay consistent with the remaining N/S Section lines in the area, I felt that extending the East line of Section 26 to the South bank of the Brule River was the best available approach to re-establishing the meander corner between Sections 23 and 24.

Description of monument and accessories I established to perpetuate the original location of this corner.

At the corner position, set a 2½ inch diameter aluminum pipe monument, 3 feet long, 3 inches above the ground, with an aluminum cap stamped: T41N, R14E, Meander corner, S23, S24, 1991, S-1634, from which the following new blazed and scribed bearing trees bear: (measurements taken to a nail in side of tree)

Ash	6"	N 02°W	15.65 feet
Sugar Maple	4"	S 75°E	8.19 feet
Sugar Maple	8"	S 17°W	16.51 feet
Balsam	3"	S 60°W	18.04 feet
Steel sign post		South	1.02 feet

Monument is approximately 20 feet from river shoreline.

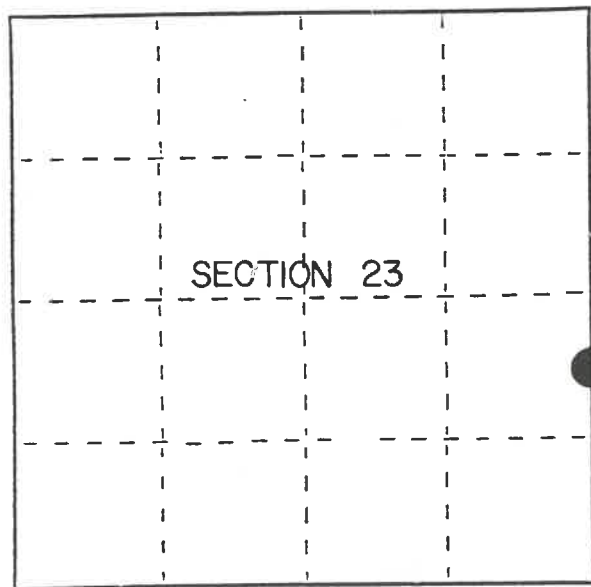
Dated at Iron River, MI, this 16th day of February, 1992.

Signature Gary L. Pisoni Title Land Surveyor Registration No. S-1634
 (County Surveyor, Registered Land Surveyor, or other duly authorized official)

Office of Register of Deeds, County of Forest, I hereby certify that the within instrument was filed in this office for record on the 10th day of March, 1993 at 10:45 o'clock A.M.

Paul A. Schaeffer
 (Register of Deeds)

By _____ Deputy



● = Corner monument restored.

FORM NO. 985-A

H.C. Miller Company

Stock No. 26273

146873

44114231506

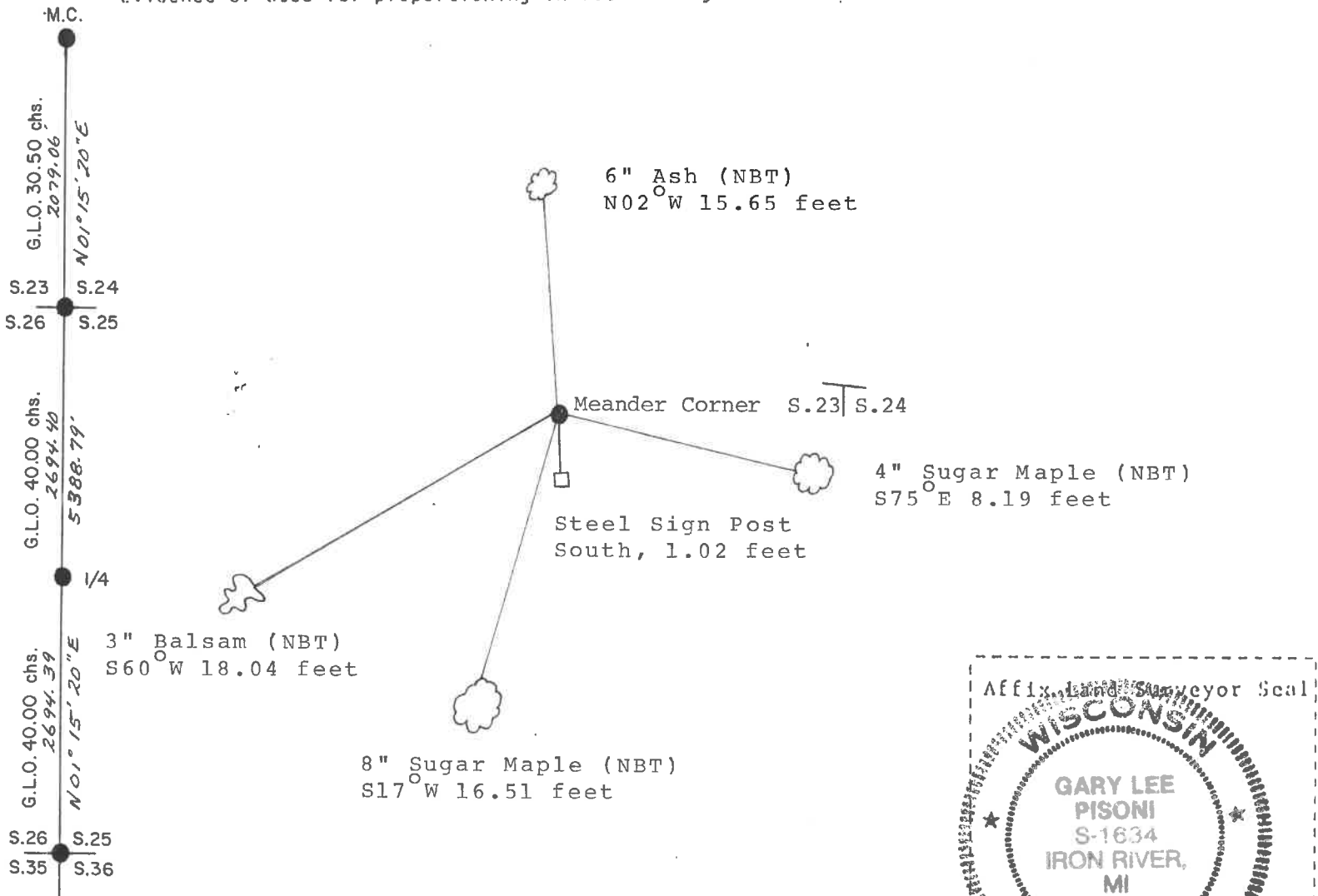
(j) Describe any material discrepancy between the location of the corner as restored or reestablished and the location of that corner as previously restored or reestablished by distance and direction. Show the discrepancy on the plan view drawing under (d), above. Show the distances between the corner as previously restored or reestablished and (1) the corner as restored or reestablished, and (2) to at least 2 of the witness monuments shown on the drawing in (d), above.

See drawing below.

(r) Was the corner restored through acceptance of (1) an obliterated evidence location, or, (2) a found perpetuated location?

Restored through lost corner proportionate methods.

(g&h) Was the corner reestablished through lost corner proportionate methods? If so, show the method, including the directions and distances to other public land survey corners used as evidence or used for proportioning in determining the corner location?



(i) I, Gary L. Pisoni
 (Type or print name) certify that the corner location shown on this record was determined by me or under my direction and control and that this U.S. Public Land Survey Monument Record is correct and complete to the best of my knowledge and belief.

Gary L. Pisoni Signature March 13th 1992 Date

Survey requested by: [Signature] District Ranger 10/2/92 Date