

CORTNEY BRITTEN CLEEREMAN
REGISTER OF DEEDS
FOREST COUNTY WI
PAGES: 1

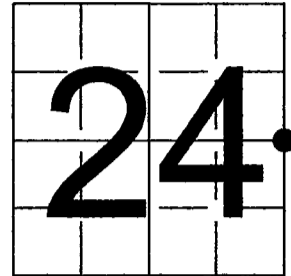
INDEX#: P25

U S PUBLIC LAND SURVEY MONUMENT RECORD

NOTE: This form is intended and designed to fulfill all requirements of Wisconsin Administrative Code, Chapter A-E 7.08 U.S. Public Land Survey Monument Record (3) (a-i)

A-E 7.08(3)(a) Identity of corner:
EAST 1/4 CORNER SECTION 24,
TOWNSHIP 41 NORTH,
RANGE 13 EAST OF THE 4TH PM,
TOWN OF ALVIN, COUNTY OF FOREST

WISCORS - FOREST COUNTY
N: 734,074.079 USft (XXX,XXX.XXX)
E: 860,349.794 USft (XXX,XXX.XXX)
Datum: NAD83 (2011)
GNSS Method RTK
GNSS Control WISCORS VRS



The coordinate value shown has been verified by the average of two or more GPS observations at a markedly different time. Coordinates shown in parenthesis are previously published values.

A-E 7.08(3)(b)

Original Surveyor: Original Surveyor: William E. Daugherty - June 5, 1865 to June 5, 1865
Birch 8 - S 69° E - 32 Links & Spruce 8 - N 57° W - 18 Links

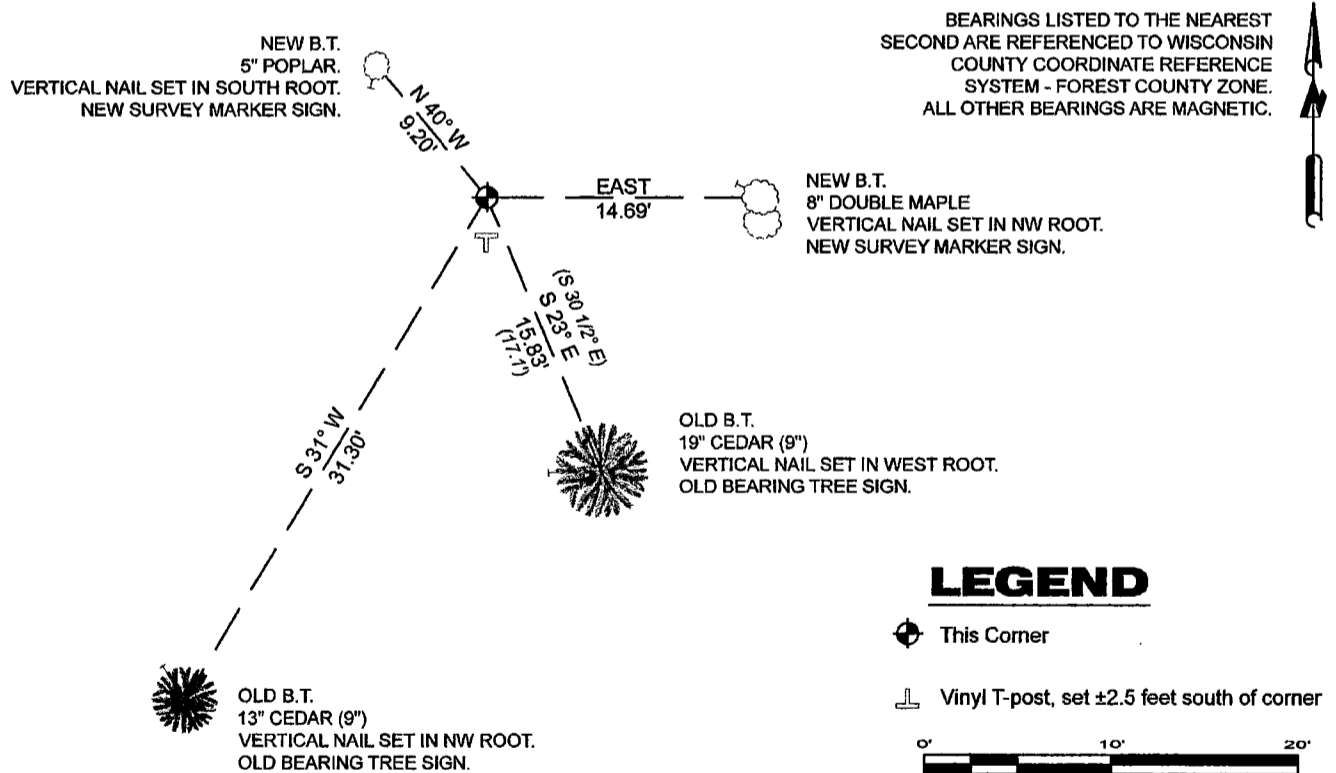
See Forest County Surveyor File #411324 1997 - 1977 - Surveyor 802 - Jean F. Resvick - THENCE:

March 7, 2011 - Surveyor 809 - Michael S. Hess - indicates this position as "USFS brass cap found" on Forest County Certified Survey Map volume CS-8 Certified Surveys, on Page 149 .

January 08, 2024 - I found a 4" diameter concrete monument with a 2.5" diameter, stamped brass cap. I also found 2 of Resvick's Bearing trees.

I established 2 new reference monuments as shown below.

A-E 7.08(3)(c)(d) Plan view of corner with references to at least 4 witness monuments.



A-E 7.08(3)(e) 1977 Surveyor found a monument previously established by the BLM dependent resurvey, subsequent surveyor found a USFS brass cap. I found a 4" diameter concrete monument with a 2.5" diameter, stamped brass cap.

A-E 7.08(3)(f) I accept this monument as a FOUND PERPETUATED LOCATION of the corner.

A-E 7.08(3)(g)(h) This corner was determined through lost-corner-proportionate methods.

A-E 7.08(3)(i) I, Jeffrey L. DeMuth, Professional Land Surveyor No. S-2656, hereby certify that the corner location on this record was determined by me or under my direction and control, and that this U.S. Public Land Survey Monument Record is correct and complete to the best of my knowledge, and belief.

Jeffrey L. DeMuth
SIGNATURE
January 09, 2024
DATE



44113242000

44113242000

P25