

U.S. PUBLIC LAND SURVEY MONUMENT RECORD

Index No. V-19,20

State of Wisconsin }
County of Forest } ss.

I, Gary L. Pisoni, do hereby certify that on the 21st day of March, 1989 I found evidence of the East meander corner of Section 26 and 35 Township 40 North, Range 14 East, Fourth Principal Meridian, as described hereon; and that from this evidence I established a new monument and accessories as described hereon to perpetuate the original location of this corner.

Resident witnesses:

History of original corner establishment:

Dependent resurvey in 1950 by Hugh B. Crawford; S 89°08'W, Between sections 26 and 35, 22.83 chains, no evidence found of the original bearing trees for this corner position, he decided to proceed to the East shore of Little Wapoose Lake at 26.72 chains, set corner position from which he set a iron post 30" long, 2 1/2" diameter, 16" in the ground with brass cap marked:

T40N, R14E, M.C., S-26, S-35, 1950 from which the following bear:
Spruce 4" N 48°E 22 1/2 links Spruce 4" S.30 1/4 E 84 links

In 1974, William Cochrane, U.S.F.S. found monument as described above, set new corner ref: Tamarack 4" S 32°E 10.74 feet Steel sign post South along side mon.

Description of corner evidence found:
Found monument as described above, but flush with swamp surface, located on edge of lake.

Corner references found:

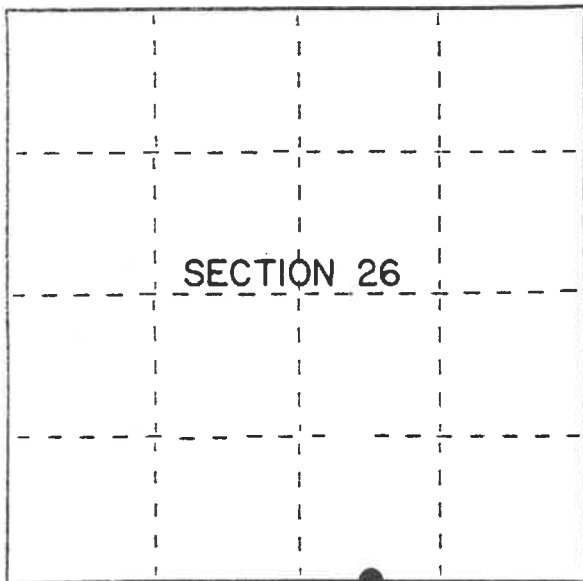
Tamarack 4" S 32°E 10.87 feet
Steel sign post South 0.4 feet

1950 corner references all missing.

Description of monument and accessories I established to perpetuate the original location of this corner.

Blazed and scribed the following new bearing trees: (measurements taken to nail in side of tree)

Black Spruce 3" N 61°E 12.72 feet



● = Corner monument restored.

Dated at Iron River, MI Wis., this 9th day of December, 1989

Signature: Gary L. Pisoni Title: Land Surveyor Registration No. S-1634
(County Surveyor, Registered Land Surveyor, or other duly authorized official)

Office of Register of Deeds, County of Forest I hereby certify that the within instrument was filed in this office for record on the 20th day of September, 1990 at 10:45 o'clock A.M.

(Register of Deeds)

By: Leah Chitko Deputy

FORM NO. 985-A

H.C. Miller Company

Stock No. 26273

DOCUMENT NUMBER

140497

4-10-14-260012

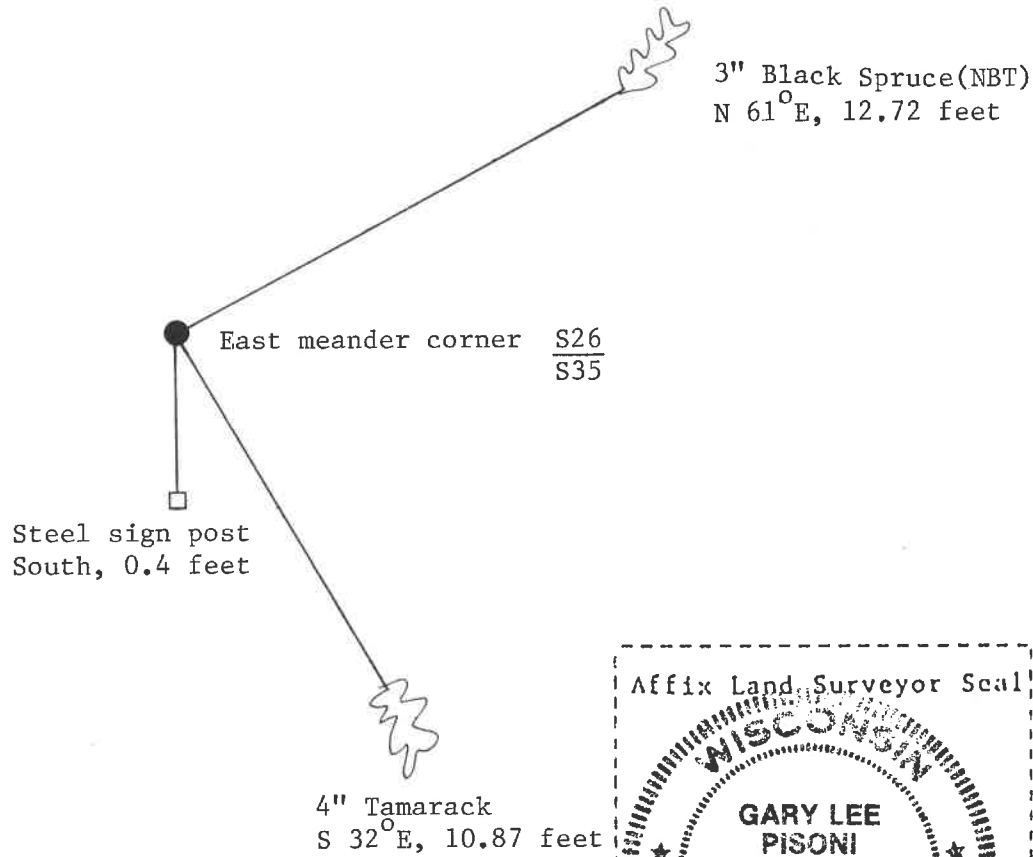
e) Describe any material discrepancy between the location of the corner as restored or reestablished and the location of that corner as previously restored or reestablished by distance and direction. Show the discrepancy on the plan view drawing under (d), above. Show the distances between the corner as previously restored or reestablished and (1) the corner as restored or reestablished, and (2) to at least 2 of the witness monuments shown on the drawing in (d), above.

See drawing below.

(f) Was the corner restored through acceptance of (1) an obliterated evidence location, or, (2) a found perpetuated location?

Restored through acceptance of a found perpetuated location.

(g&h) Was the corner reestablished through lost corner proportionate methods? If so, show the method, including the directions and distances to other public land survey corners used as evidence or used for proportioning in determining the corner location?



Gary L. Pisoni



(i) I, Gary L. Pisoni (type or print name) certify that the corner location shown on this record was determined by me or under my direction and control and that this U.S. Public Land Survey Monument Record is correct and complete to the best of my knowledge and belief.

Gary L. Pisoni Signature Jan 12 1990 Date

Survey requested by: Edward [Signature] District Ranger 9-18-90 Date