

U.S. PUBLIC LAND SURVEY MONUMENT RECORD

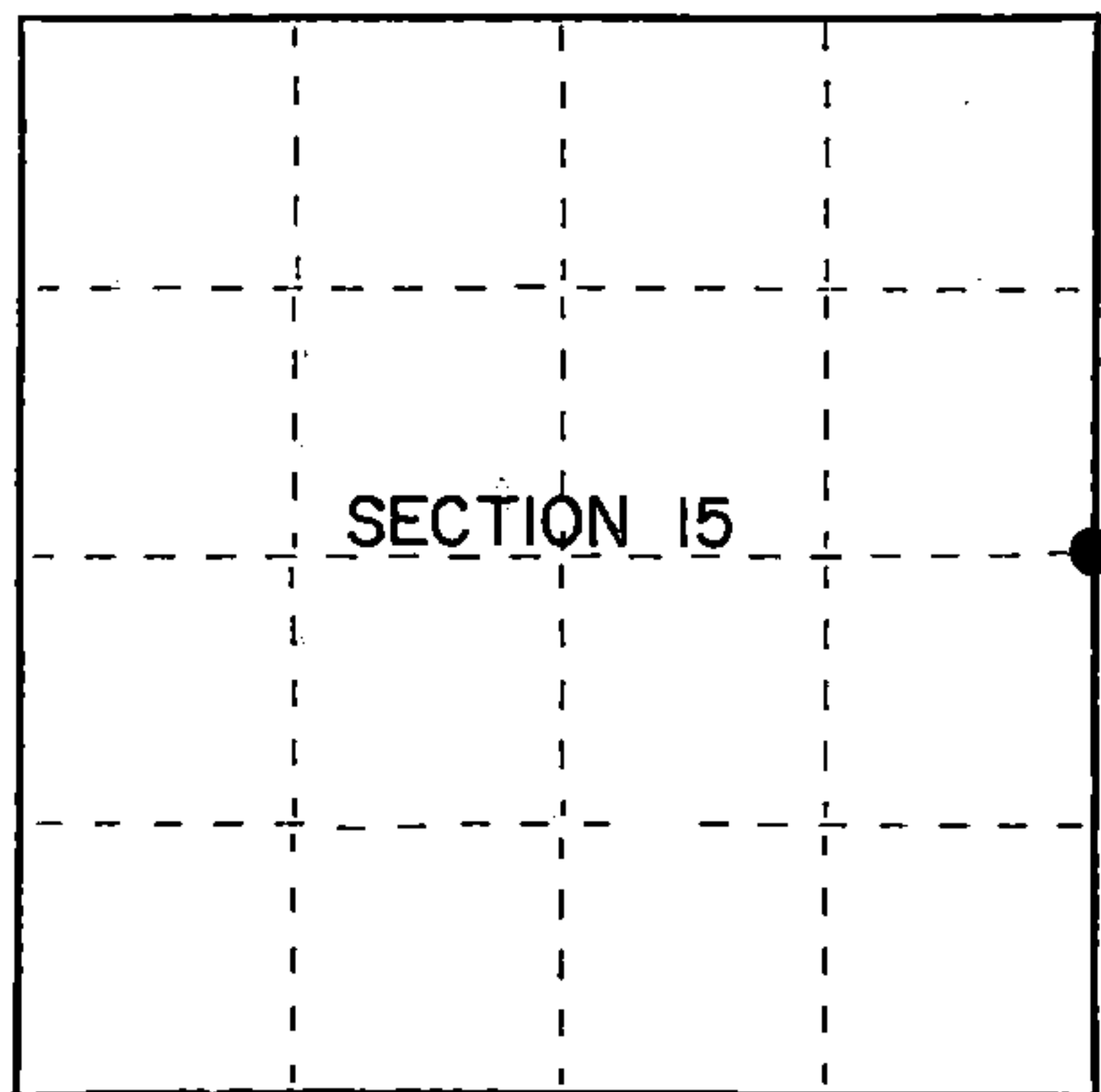
Index No. L-17

State of Wisconsin } ss.
County of Forest

I, Gary L. Pisoni, do hereby certify that on the 9th day of September, 1989, I found evidence of the East quarter corner of Section 15 Township 40 North, Range 14 East, Fourth Principal Meridian, as described hereon; and that from this evidence I established a new monument and accessories as described hereon to perpetuate the original location of this corner.

Resident witnesses:

.....
.....
.....



● = Corner monument restored.

History of original corner establishment:

Dependent Resurvey in 1945 by Hugh B. Crawford. North between Sections 14 and 15, 40.18 chains, corner set at proportionate distance and point falls near center of road, set a concrete monument, 12" long, 6" dia., no marks. In 1945, set a point East 40 links, distance set concrete, 3 feet long, 5" dia., 30" in the ground with brass cap marked as W.C. (witness corner).

In 1966, Jean F. Resvick found monuments as described above and set bearing trees to the witness corner on the East side of the road.

No corner references were ever set for the quarter corner in the road.

Description of corner evidence found:

Found monument as described above, monument at quarter corner position is presently flush with roadbed surface.

Description of monument and accessories I established to perpetuate the original location of this corner.

Replaced concrete monument with no marks with a 2 1/2" diameter aluminum pipe monument, 3 feet long, 8" below the surface of the road, with an aluminum capped stamped: T40N, R14E, 1/4, S-15, S-14, 1989, S-1634. From which the following new blazed and scribed bearing trees bear (all measurements taken to a nail in side of tree):

Red Pine	12"	N 20°W	66.41 feet
Spruce	7"	N 83°E	31.67 feet
Witness corner	6" dia	East	26.44 feet
Spruce	7"	S 80°E	36.19 feet

Dated at Iron River, MI, Wis., this 2nd day of November, 1989

Signature Gary L. Pisoni Title Land Surveyor Registration No S-1634
(County Surveyor, Registered Land Surveyor, or other duly authorized official)

Office of Register of Deeds, County of Forest, I hereby certify that the within instrument was filed in this office for record on the 20th day of September, 1990 at 10:45 o'clock A.M.

(Register of Deeds)
By Jack Chitko Deputy

44014152000

FORM NO. 985-A
H.C. Miller Company
MILWAUKEE, WISCONSIN

Stock No. 26273
DOCUMENT NUMBER
140472

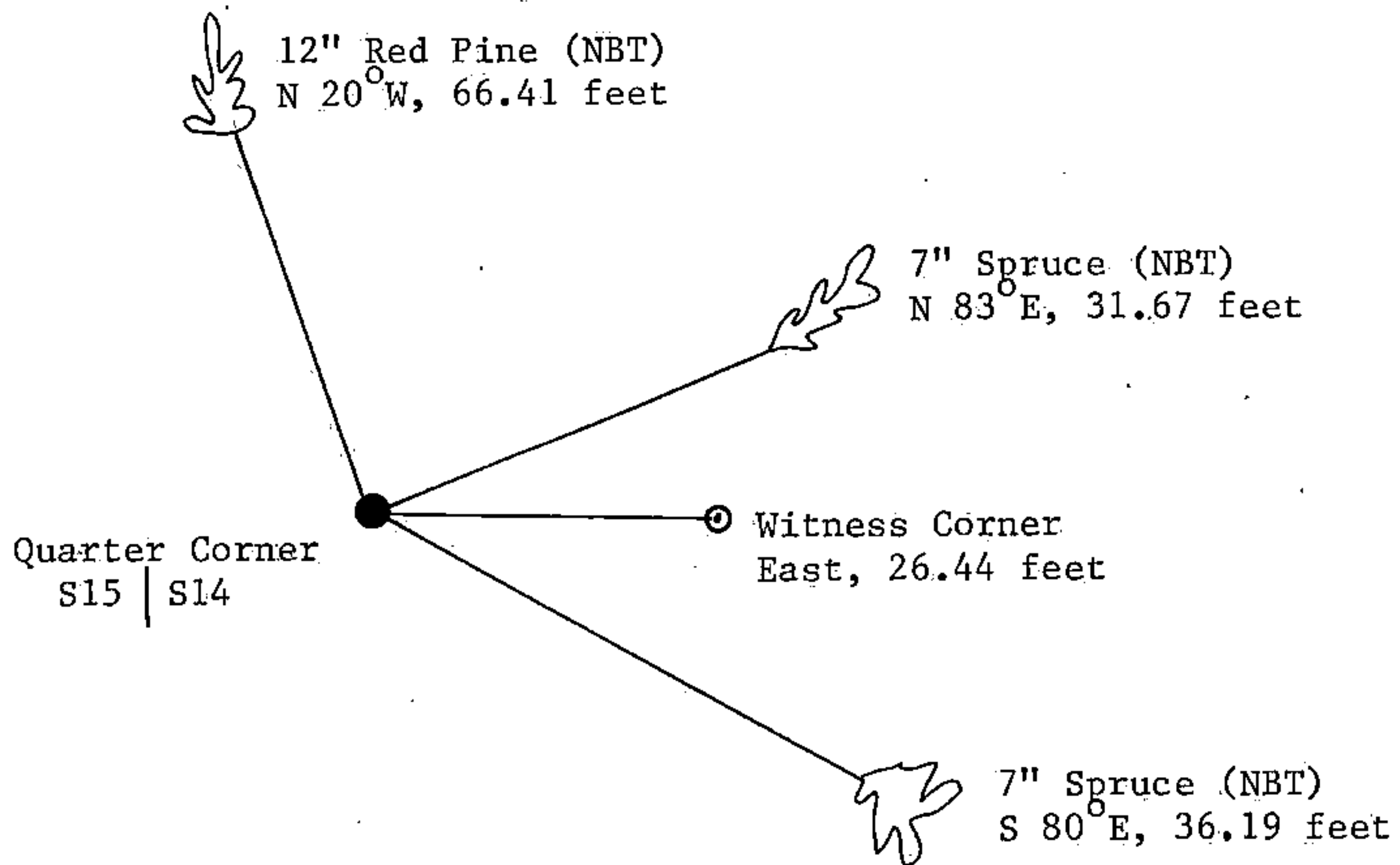
e) Describe any material discrepancy between the location of the corner as restored or reestablished and the location of that corner as previously restored or reestablished by distance and direction. Show the discrepancy on the plan view drawing under (d), above. Show the distances between the corner as previously restored or reestablished and (1) the corner as restored or reestablished, and (2) to at least 2 of the witness monuments shown on the drawing in (d), above.

See drawing below

(f) Was the corner restored through acceptance of (1) an obliterated evidence location, or, (2) a found perpetuated location?

Restored through acceptance of a found perpetuated location.

(g&h) Was the corner reestablished through lost corner proportionate methods? If so, show the method, including the directions and distances to other public land survey corners used as evidence or used for proportioning in determining the corner location?



(i) I, Gary L. Pisoni
 (type or print name) certify that the corner location shown on this record was determined by me or under my direction and control and that this U.S. Public Land Survey Monument Record is correct and complete to the best of my knowledge and belief.

Signature Gary L. Pisoni Date Jan 12 1990

Survey requested by [Signature] District Ranger Date 9-18-90

CERTIFIED LAND CORNER RESTORATION

State of Wisconsin }
County of Forest } ss.

I, Jean F. Resvick, do hereby certify that on the 16th day of November, 1966, I found evidence of the West quarter corner of Section 14 Township 40 North, Range 14 East, Fourth Principal Meridian, as described hereon; and that from this evidence I established a new monument and accessories as described hereon to perpetuate the original location of this corner:

Description of original monument and accessories and subsequent restorations:

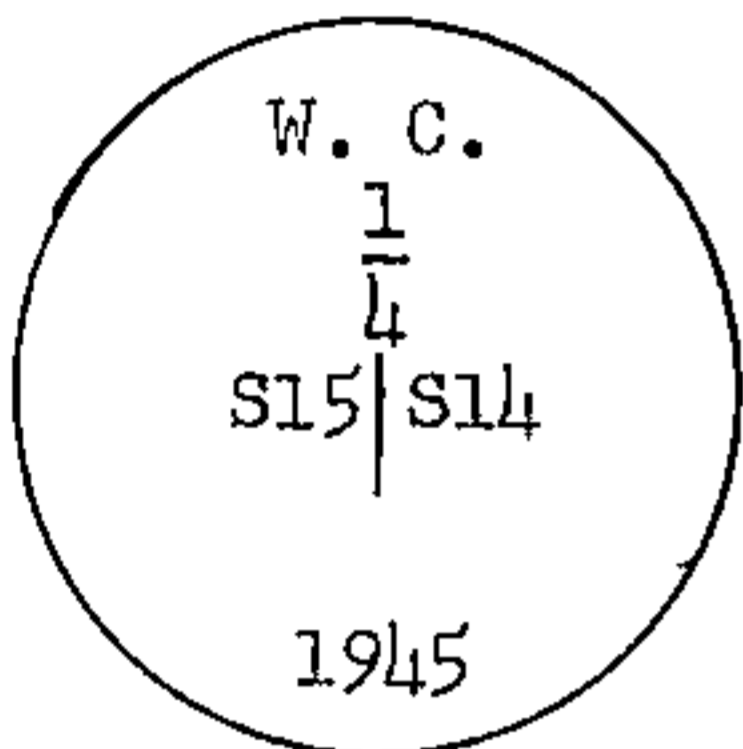
Original surveyed in 1865.
Dependent resurvey in 1945 by Hugh B. Crawford.
Proportionate distance point falls near center of road set concrete monument, 12 ins. long, 6 ins. diameter, 20 ins. in ground, no marks. At point East 40 lks. distance set concrete monument, 3 ft. long, 5 ins. diameter, 30 ins. in the ground, with brass cap marked:

from which the following bear:

Cherry, 5 ins. diam., N60° 45' W, 160 lks.
Poplar, 4 ins., diam., S2° 45' E, 33½ lks.

Description of corner evidence found:

Concrete witness corner found as described.
Cherry 8 ins., N60° 45' W, 105.6 ft.
Poplar stump, S2° 45' E, 22.11 ft.

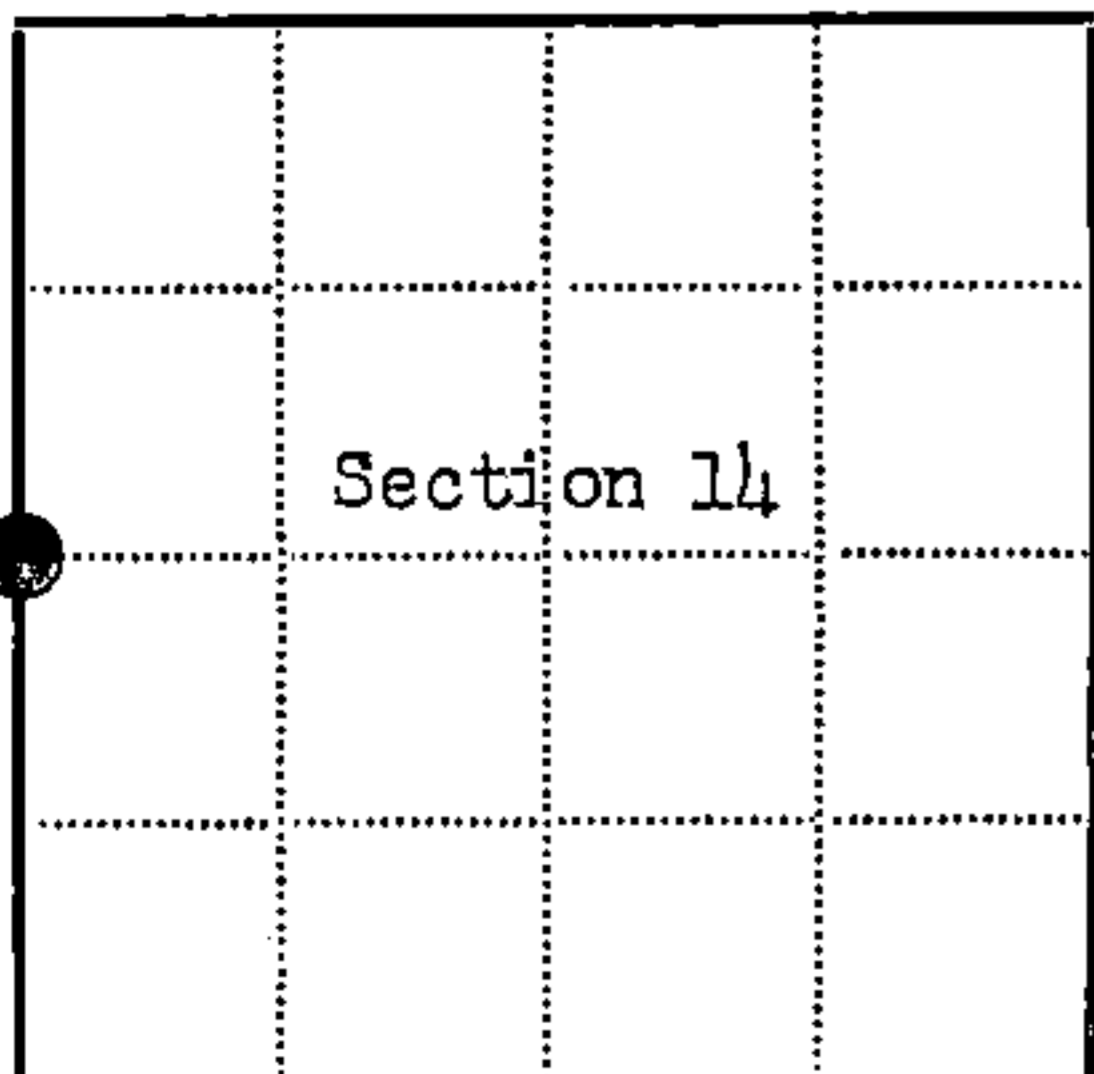
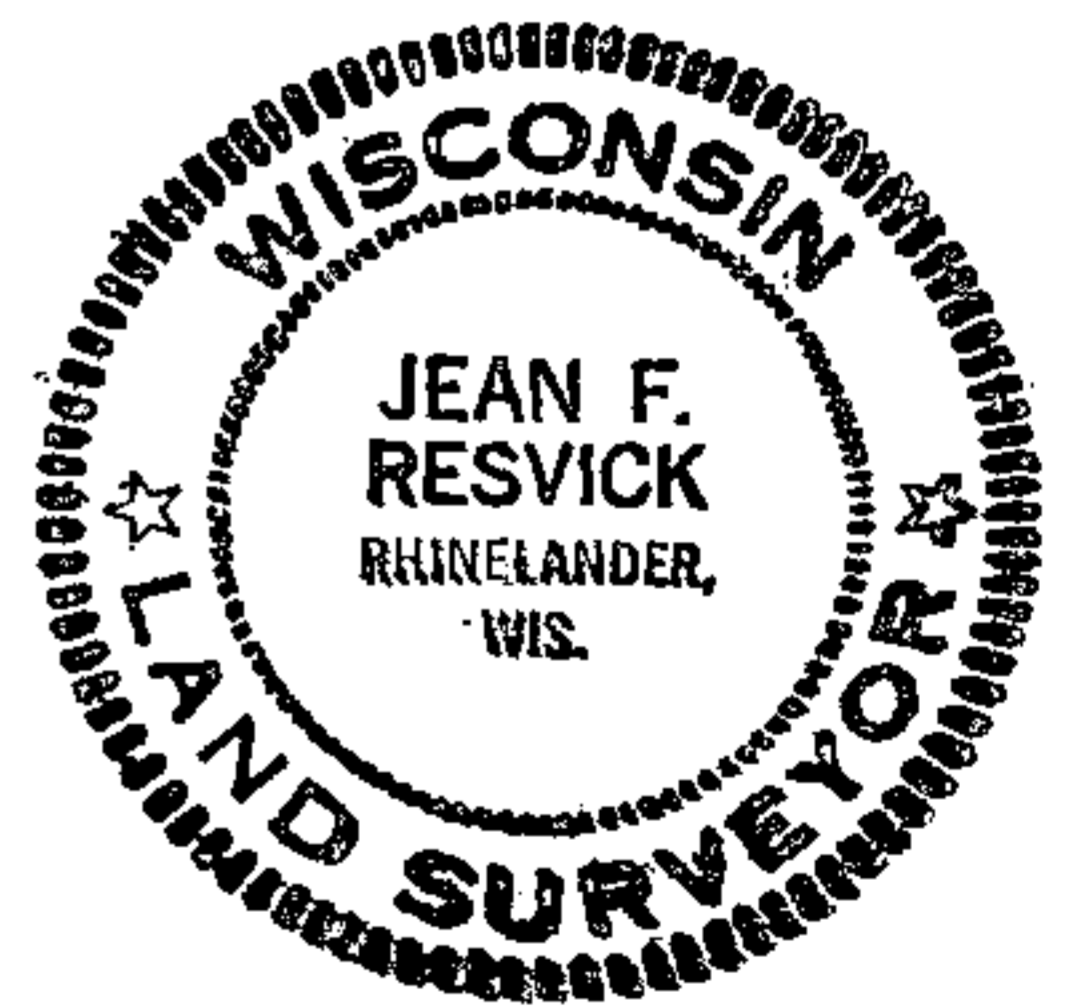


Description of monument and accessories I established to perpetuate the original location of this corner:

Blazed and scribed the following new bearing trees for witness corner:

Spruce 5", S62° E, 10.64 ft. or 16.12 lks.
Spruce 3", N45° E, 6.84 ft. or 10.36 lks.

4401415 2000



● = Corner monument restored
□ =

Resident witnesses.....

Dated at Rhinelander, Wisconsin, this 21st day of March 1967.

Signature Jean F. Resvick Title Cadastral Surveyor
(County Surveyor, Registered Land Surveyor, or other duly authorized official)

Surveyors Registration No. S-802 Doc. No. 94237

Office of Register of Deeds County of Forest

I hereby certify that the within instrument was filed in this office for record on the 27th day of February 1968, and was filed in Book No. I Page No. of County Records.

Signature Eugene Staszny Title Register of Deeds

Township 40 North, Range 14 East, Section 14, Index No. L-17, Page No.

177