

U.S. PUBLIC LAND SURVEY MONUMENT RECORD

Index No. A-21

State of Wisconsin }  
 County of Forest } ss.

I, Gary L. Pisoni, do hereby certify that on the 19th day of June, 1990, I found evidence of the Northeast Section corner of Section 2 Township 39, North, Range 13 East, Fourth Principal Meridian, as described hereon; and that from this evidence I established a new monument and accessories as described hereon to perpetuate the original location of this corner.

Resident witnesses:

.....

.....

.....

History of original corner establishment:  
 Original Government Survey in 1858 by Alfred Millard.

Dependent Resurvey in 1978 by Gary L. Kratz and Michael J. Avery. At the point for the section corner to sections 1, 2, 35 and 36 on the North Boundary of the Township, at proportionate distance, set an aluminum post, 30" long, 2 1/2" in diameter, 1" below the surface, with cap mkd; T40N, R13E, S35, S36, S1, S2, T39N, 1978. From which the following bear;

Elm	10"	N40°E.	74 lks.	Maple	12"	S51°W	80 lks
Basswood	14"	S86°E	32 lks.	Maple	8"	N66°W	106 lks

Description of corner evidence found:

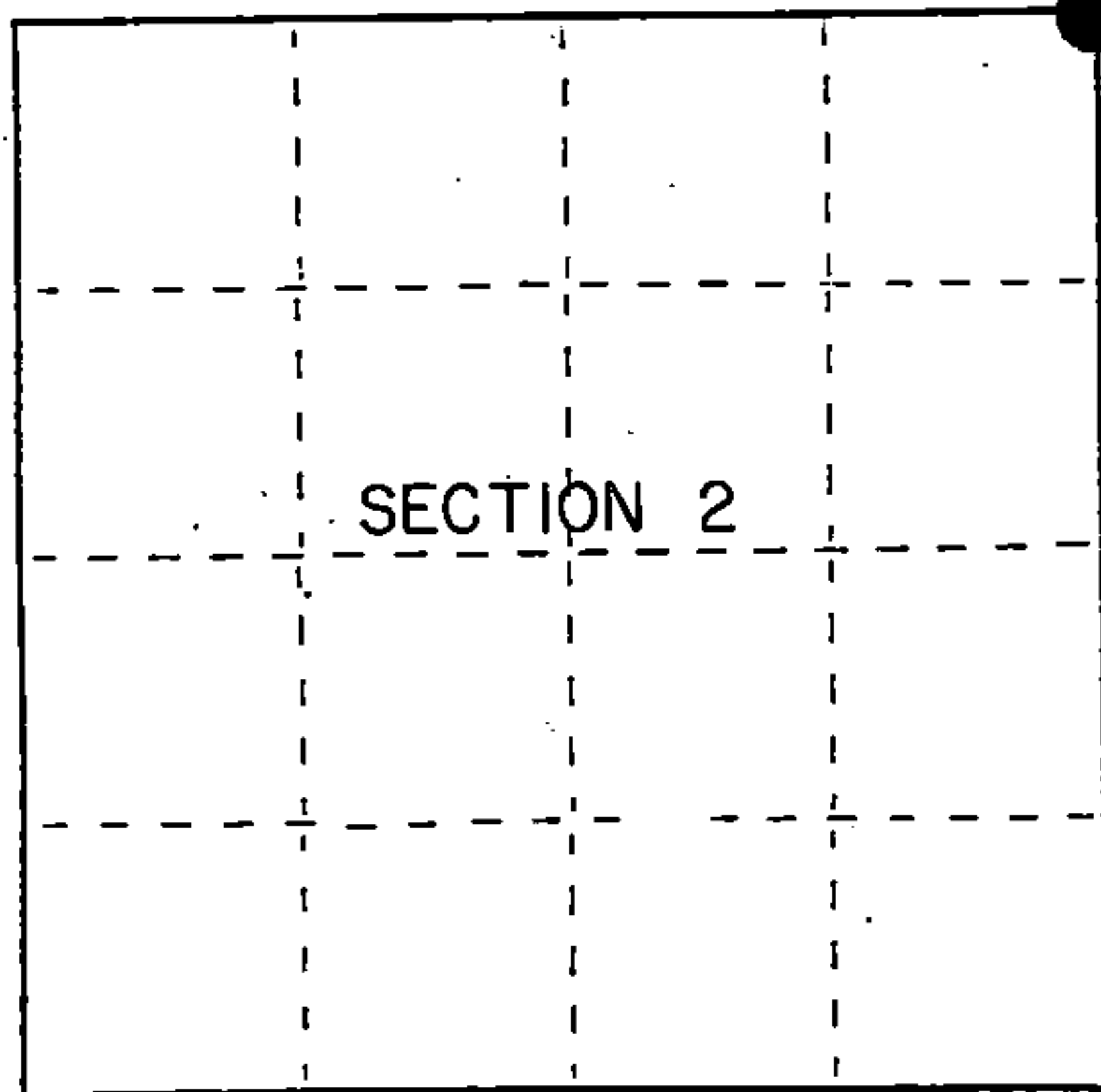
Found monument as described, 3" below road surface and 3' East of the East edge of blacktop.

From which the following bear;

Sugar Maple	13"	S58°W	53.24 feet
Sugar Maple	8"	N65°W	70.58 feet

Description of monument and accessories I established to perpetuate the original location of this corner. Blazed and scribed the following new bearing trees; (Measurements taken to nail in side of tree)

Sugar Maple	7"	N52°E.	35.82 feet
Sugar Maple	6"	S56°E	39.92 feet



● = Corner monument restored.

Dated at Iron River, MI, ~~WIS.~~ this 20th day of August, 1990

Signature Gary L. Pisoni Title Land Surveyor Registration No. S-1634  
 (County Surveyor, Registered Land Surveyor, or other duly authorized official)

Office of Register of Deeds, County of Forest, I hereby certify that the within instrument was filed in this office for record on the 10th day of March, 1993 at 10:45 o'clock A. M.

Paul Achenbrenner  
 (Register of Deeds)

By..... Deputy

FORM NO. 985-A

H.C. Miller Company

Stock No. 26273

146896

4401335000

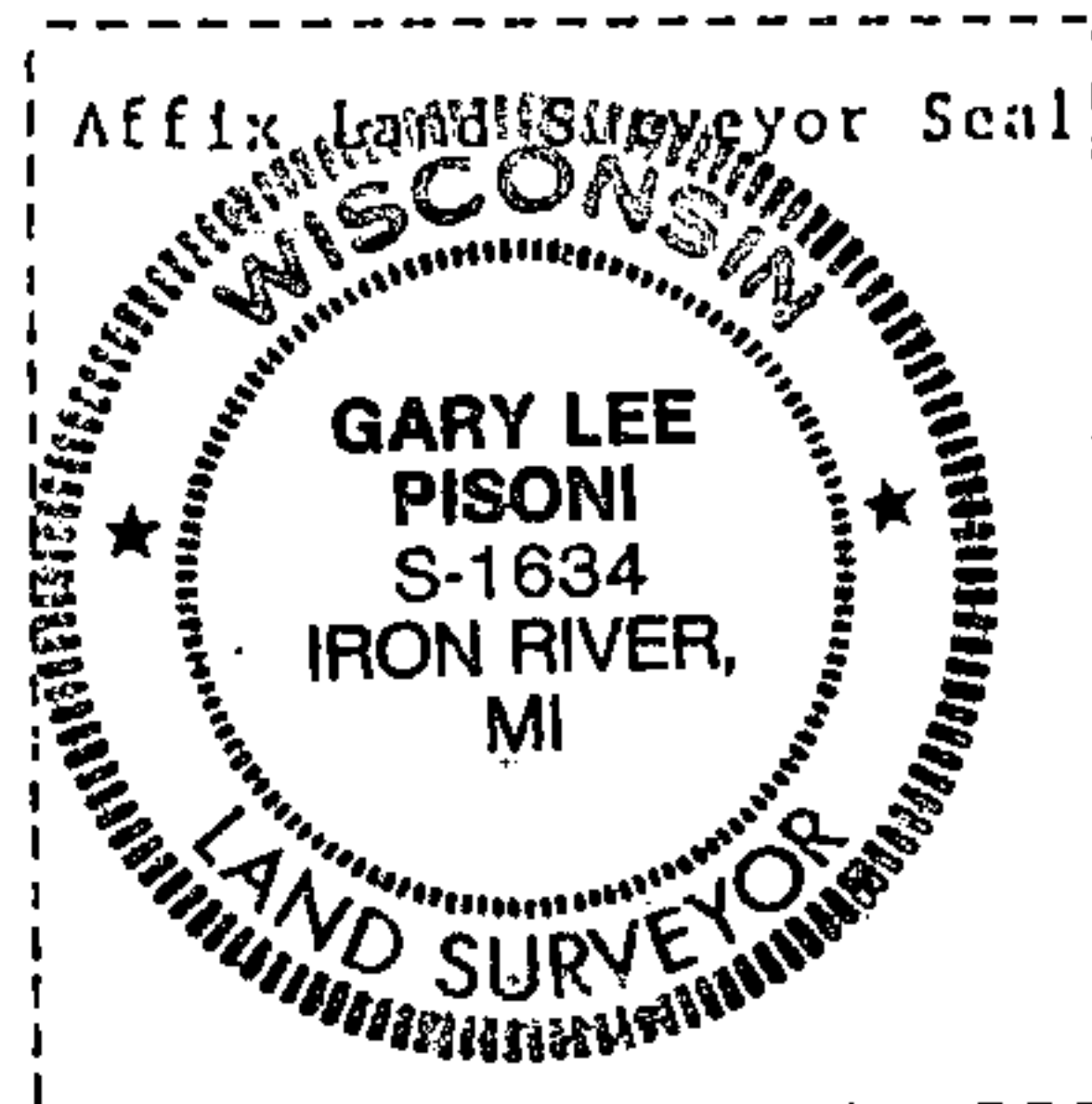
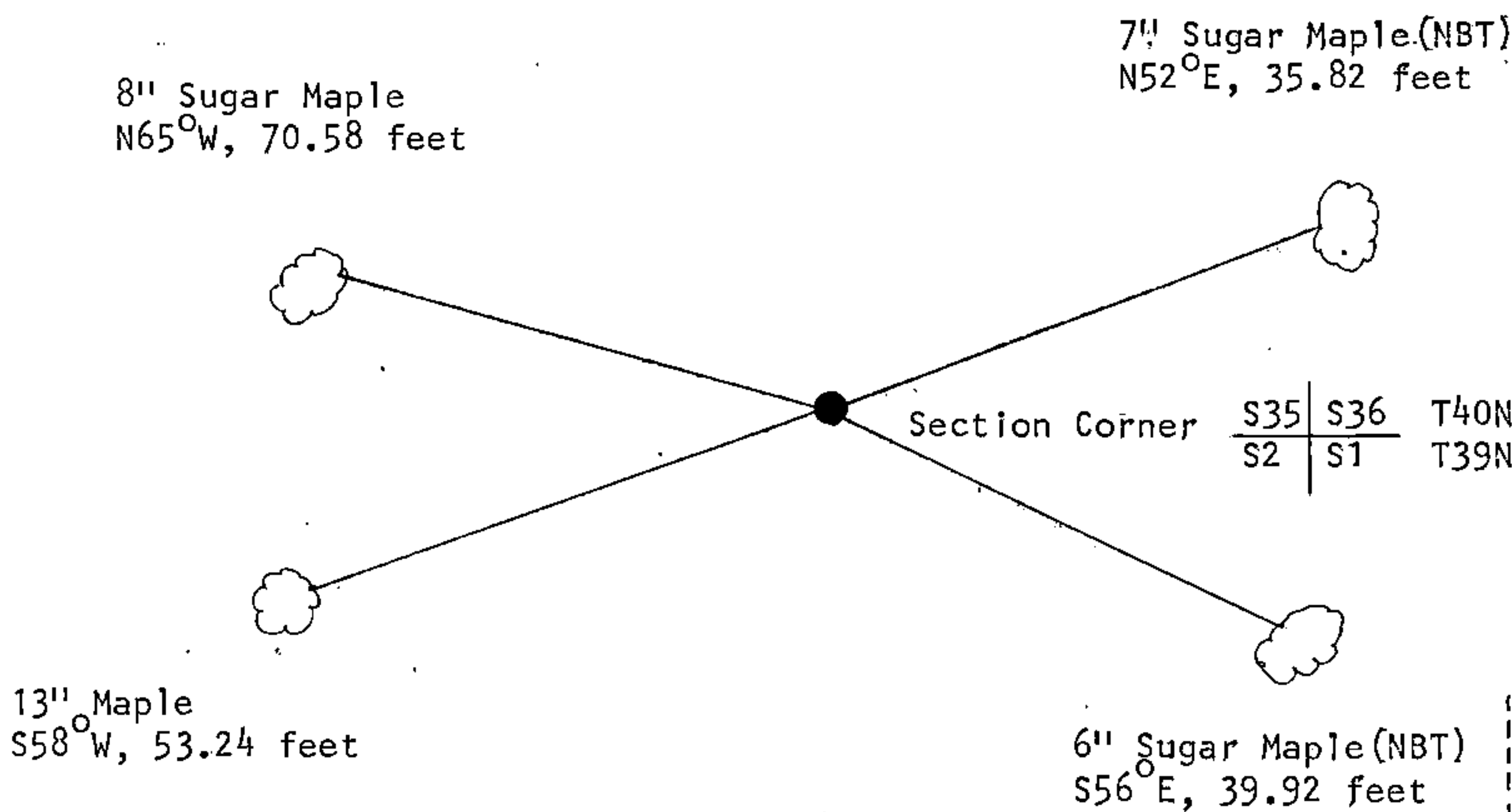
(e) Describe any material discrepancy between the location of the corner as restored or reestablished and the location of that corner as previously restored or reestablished by distance and direction. Show the discrepancy on the plan view drawing under (d), above. Show the distances between the corner as previously restored or reestablished and (1) the corner as restored or reestablished, and (2) to at least 2 of the witness monuments shown on the drawing in (d), above.

See drawing below.

(f) Was the corner restored through acceptance of (1) an obliterated evidence location, or, (2) a found perpetuated location?

Restored through acceptance of a found perpetuated location.

(g&h) Was the corner reestablished through lost corner proportionate methods? If so, show the method, including the directions and distances to other public land survey corners used as evidence or used for proportioning in determining the corner location?



(i) I, Gary L. Pisoni  
 (type or print name) certify that the corner location shown on this record was determined by me or under my direction and control and that this U.S. Public Land Survey Monument Record is correct and complete to the best of my knowledge and belief.

Gary L. Pisoni 11/21/91  
 Signature Date

Survey requested by: Cam Bond 12/17/92  
 District Ranger Date