

U.S. PUBLIC LAND SURVEY MONUMENT RECORD

Index No. R-1

State of Wisconsin }
 County of Forest } ss.

I Gary L. Pisoni, do hereby certify that on the 29th day of June, 1989, I found evidence of the Southwest Section corner of Section 19 Township 40, North, Range 14 East, Fourth Principal Meridian, as described hereon; and that from this evidence I established a new monument and accessories as described hereon to perpetuate the original location of this corner.

Resident witnesses:

.....

History of original corner establishment:

Original Government Survey in 1858 by Alfred Millard. North between Sections 25 and 30, 80.00 chains, set Section Corner post to Sections 19, 24, 25 and 30. From which the following bear;

Cedar	11"	N.50°E.	4 links
Cedar	7"	N.40°W.	7 links
Fir	10"	S.45°W.	12 links
Cedar	8"	S.58°E.	2½ links

Description of corner evidence found:

Found a 4" square cedar post, 6 feet long, from which a blazed cedar, 12", bears S.05°E., 10.40 feet. Cedar is dead and facing corner post.

I accept the cedar post as the best available evidence for restoring the corner position:

Description of monument and accessories I established to perpetuate the original location of this corner.

In place of cedar post, set a 2½ inch diameter aluminum pipe monument, 3 feet long, 33 inches in the ground, with an aluminum cap stamped; T40N, R13E, R14E, S19, S24, S25, S30, 1989, S-1634. From which the following new blazed and scribed bearing trees bear (all measurements taken to a nail in side of tree):

Ash	5"	N.19°E.	15.58 feet
Ash	5"	S.88°E.	10.48 feet
Ash	8"	S.35°E.	16.18 feet
Steel Sign Post		S.65°W.	0.72 feet

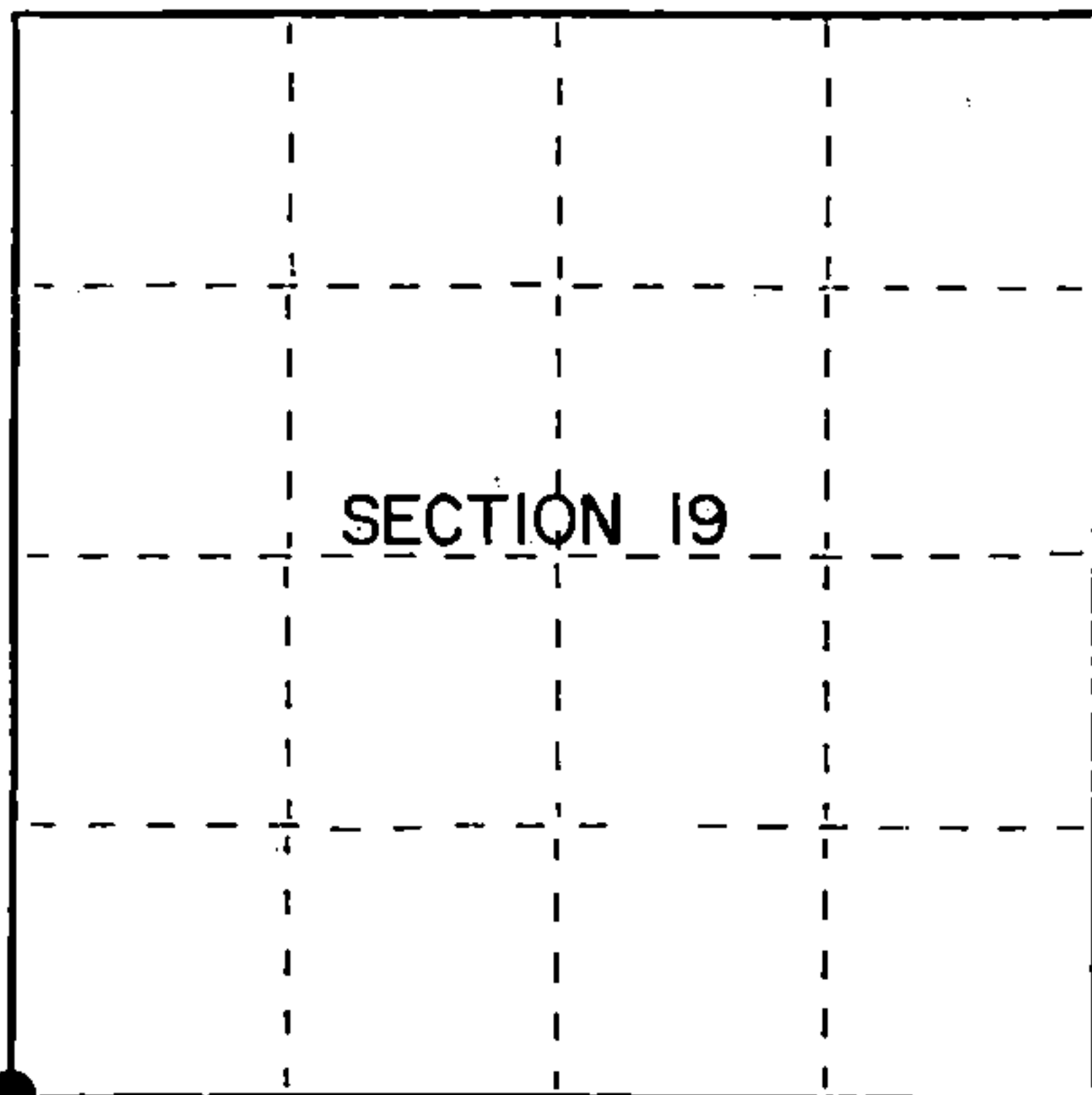
Dated at Iron River, MI, Wis, this 2nd day of November, 1989

Signature Gary L. Pisoni Title Land Surveyor Registration No. S-1634
 (County Surveyor, Registered Land Surveyor, or other duly authorized official)

Office of Register of Deeds, County of Forest, I hereby certify that the within instrument was filed in this office for record on the 20th day of September, 1990 at 10:45 o'clock A. M.

(Register of Deeds)

By Deed Chitto Deputy



● = Corner monument restored.

FORM NO. 985-A

H.C. Miller Company

Stock No. 26273

DOCUMENT NUMBER

140485

44013240000

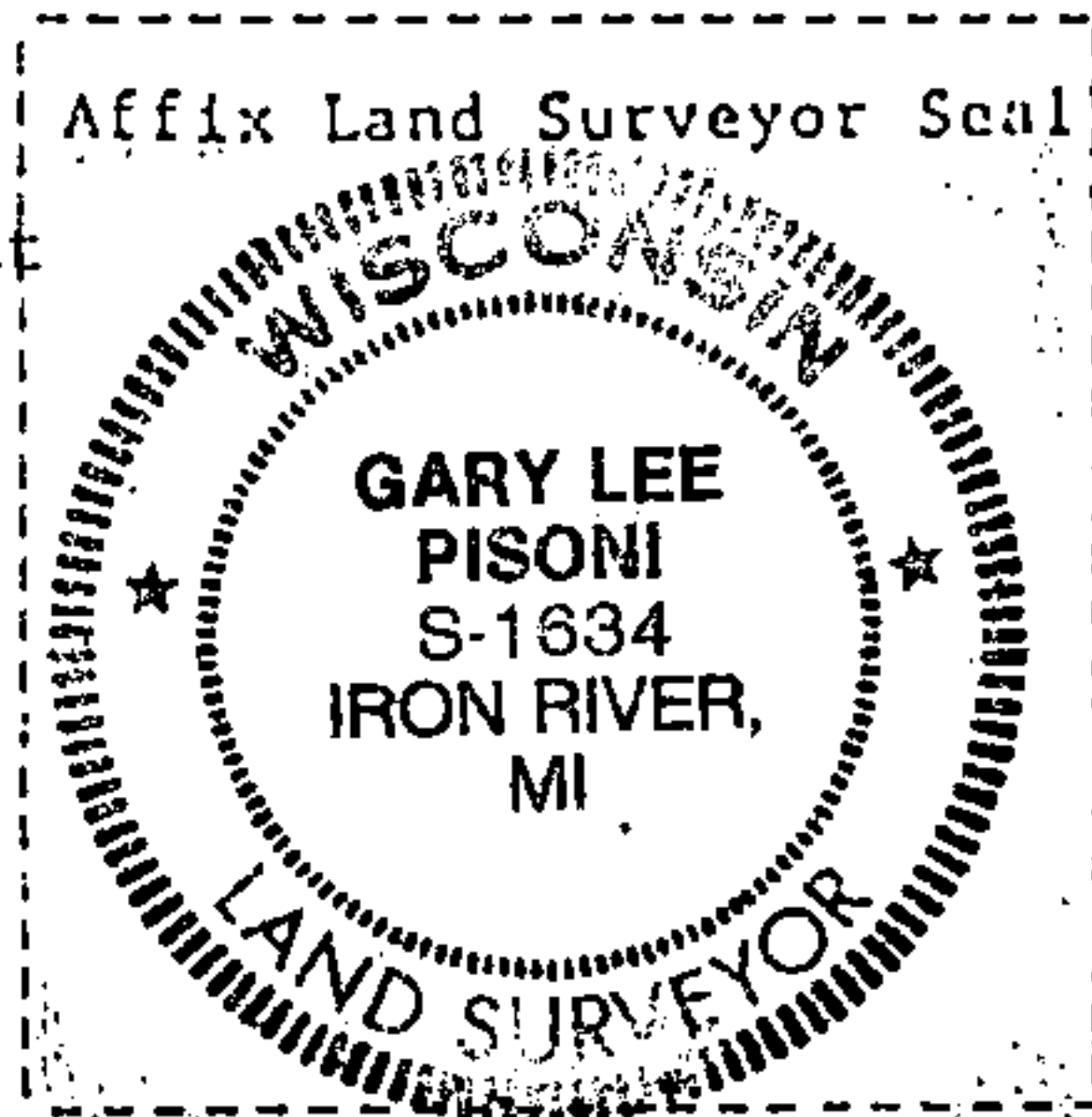
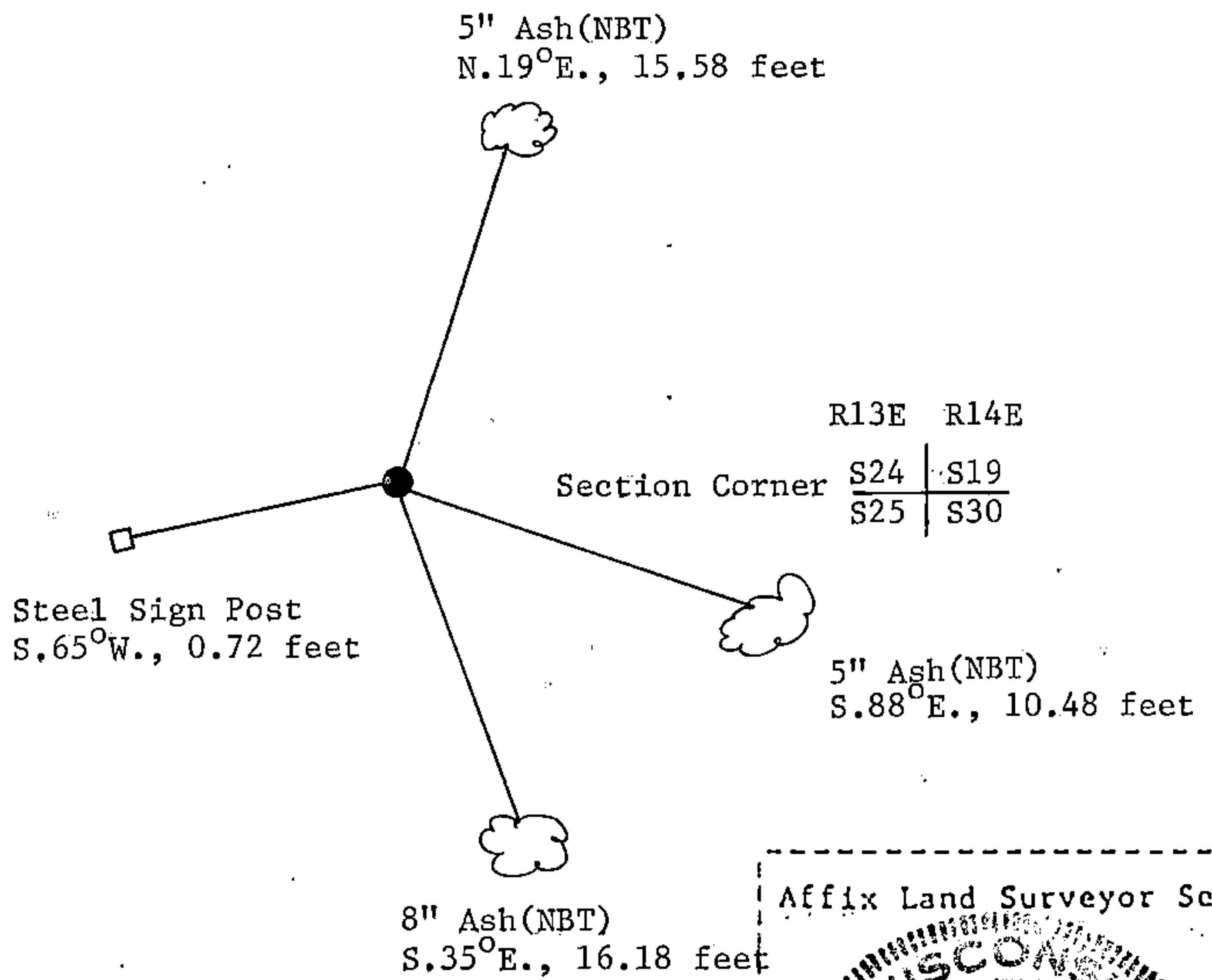
(e) Describe any material discrepancy between the location of the corner as restored or reestablished and the location of that corner as previously restored or reestablished by distance and direction. Show the discrepancy on the plan view drawing under (d), above. Show the distances between the corner as previously restored or reestablished and (1) the corner as restored or reestablished, and (2) to at least 2 of the witness monuments shown on the drawing in (d), above.

See drawing below.

(f) Was the corner restored through acceptance of (1) an obliterated evidence location, or, (2) a found perpetuated location?

Restored from accepted evidence.

(g&h) Was the corner reestablished through lost corner proportionate methods? If so, show the method, including the directions and distances to other public land survey corners used as evidence or used for proportioning in determining the corner location?



(i) I, Gary L. Pisoni
 (type or print name) certify that the corner location shown on this record was determined by me or under my direction and control and that this U.S. Public Land Survey Monument Record is correct and complete to the best of my knowledge and belief.

Gary L. Pisoni Signature Jan 12 1990 Date

Survey requested by: [Signature] District Ranger 9-18-90 Date