

U.S. PUBLIC LAND SURVEY MONUMENT RECORD

Index No. G-17

State of Wisconsin }  
County of Forest } ss.

I, James H. Moore, do hereby certify that on the 6th day of June, 1996, I found evidence of the East Quarter corner of Section 10 Township 40 North, Range 13 East, Fourth Principal Meridian, as described hereon; and that from this evidence I established a new monument and accessories as described hereon to perpetuate the original location of this corner.

Resident witnesses:

Stuart Peterson

Steve Applekamp

History of original corner establishment:

Original government survey in 1865 by William E. Daugherty. North between Sections 10 and 11, 40.00 chains, set 1/4 post. Original bearing trees:

Tamarack 5" S73°W 7 lks  
Tamarack 5" S48°E 23 lks

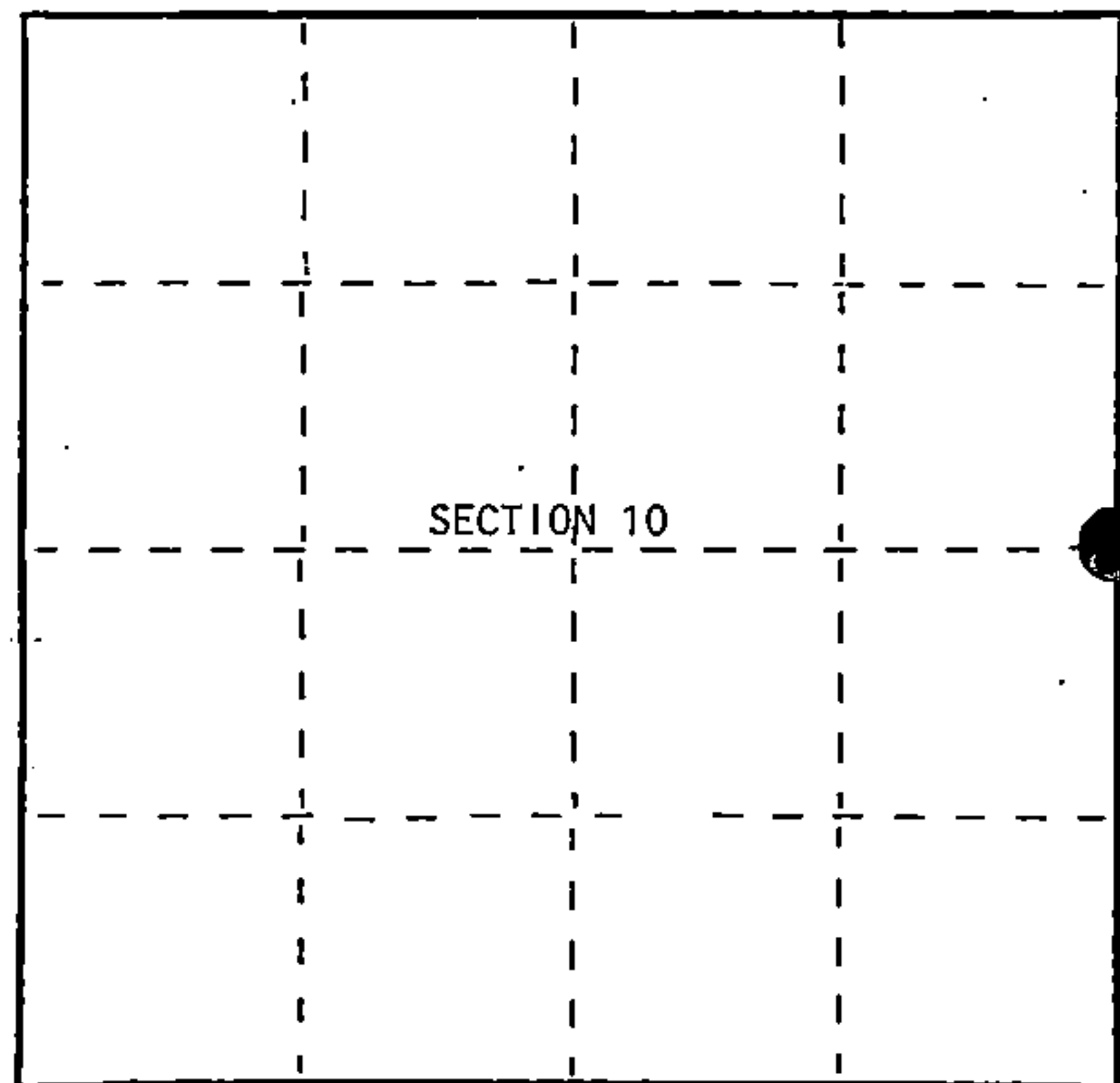
Description of corner evidence found:

No original corner evidence found. I restored corner position by lost corner proportionate methods on line and at the mid-point between the northeast and southeast section corners of Section 10.

Description of monument and accessories I established to perpetuate the original location of this corner.

Corner position falls in quaking bog east of Pot Hole Lake. I set a 2 1/2" x 120" aluminum pipe monument with aluminum cap stamped: T40N, R13E, 1/4 cor., S10, S11, 1996, S-1641 blazed and scribed the following bearing trees:

B. Spruce 5" N22°E 48.81 feet  
Tamarack 3" N80°E 35.48 feet  
Tamarack 3" S02°E 81.78 feet  
B. Spruce 5" N64°W 51.50 feet  
Steel Sign Post SW 1.10 feet



○ = Corner monument restored.

Dated at Hiles, Wis., this 6th day of January, 1997

Signature: James H. Moore Title: Land Surveyor Registration No. S-1641  
(County Surveyor, Registered Land Surveyor, or other duly authorized official)

Office of Register of Deeds, County of Forest  
I hereby certify that the within instrument was filed in this office for record on the 24th day of March, 1999 at 1:15 o'clock P. M.

(Register of Deeds)

By: Christie Ehlinger Deputy

FORM NO. 985-A

H.C. Miller Company

Stock No. 26273

Document Number 164914

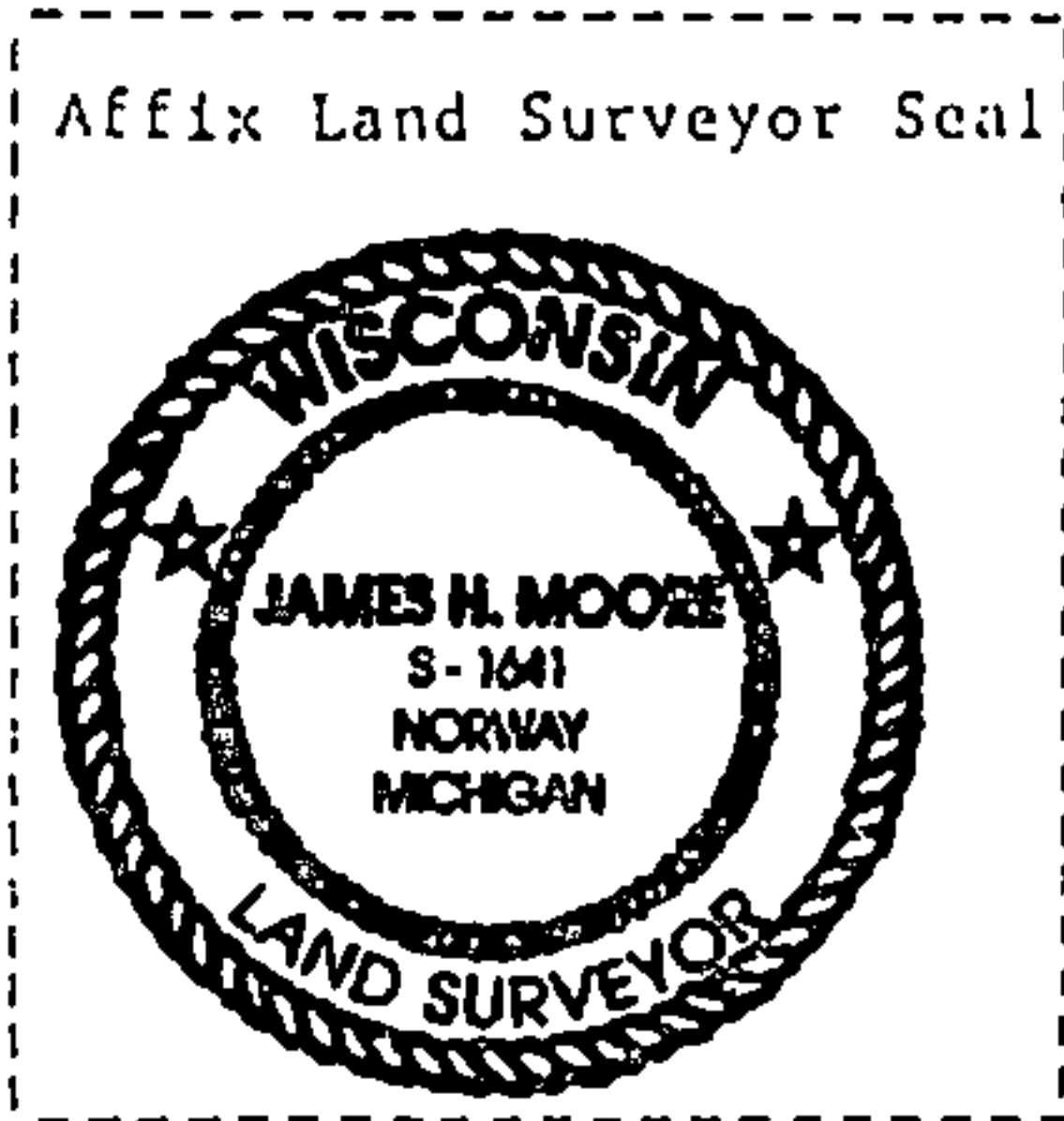
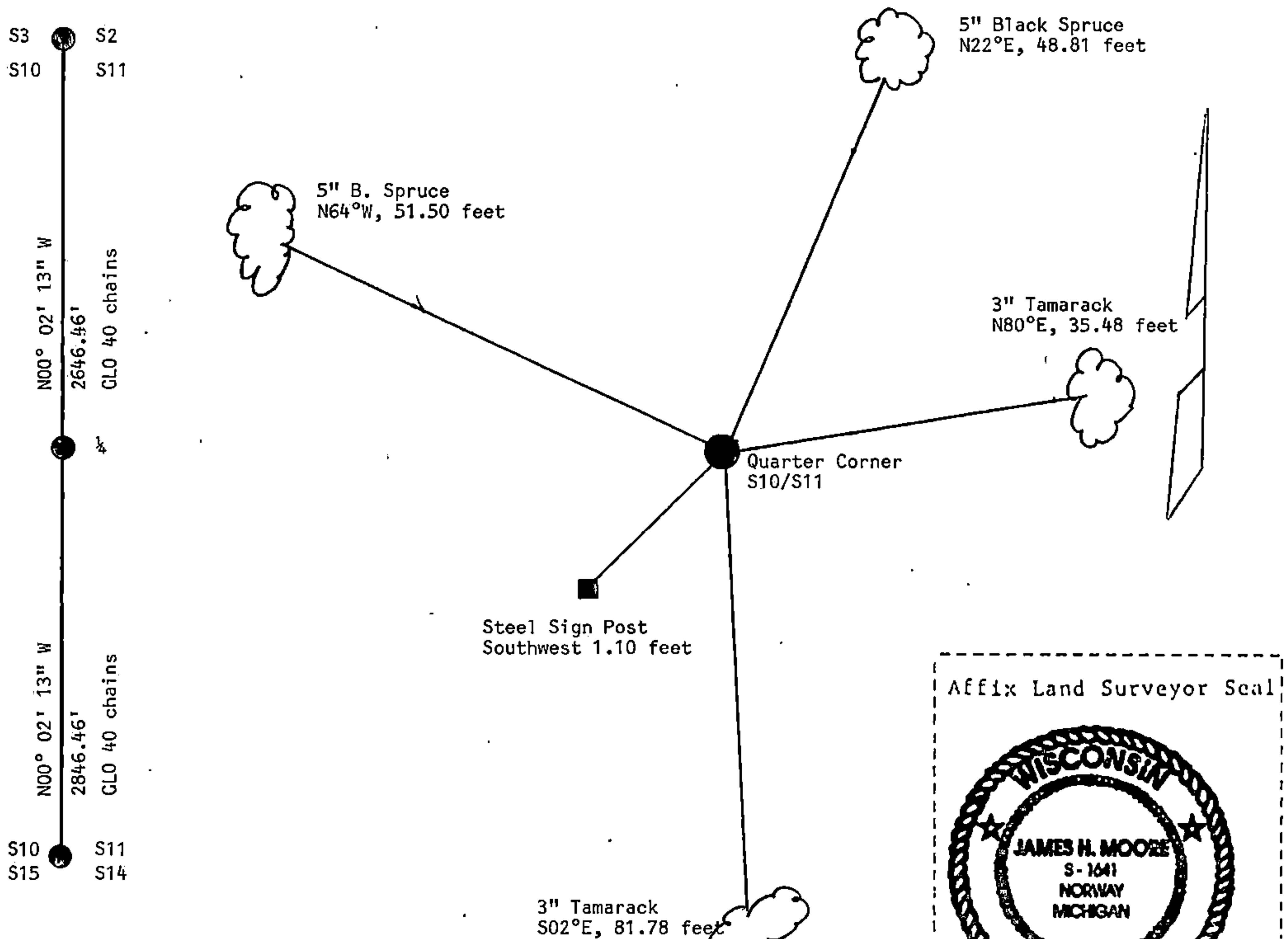
44013102000

(e) Describe any material discrepancy between the location of the corner as restored or reestablished and the location of that corner as previously restored or reestablished by distance and direction. Show the discrepancy on the plan view drawing under (d), above. Show the distances between the corner as previously restored or reestablished and (1) the corner as restored or reestablished, and (2) to at least 2 of the witness monuments shown on the drawing in (d), above.

See sketch below.

(f) Was the corner restored through acceptance of (1) an obliterated evidence location, or, (2) a found perpetuated location?

(g&h) Was the corner reestablished through lost corner proportionate methods? If so, show the method, including the directions and distances to other public land survey corners used as evidence or used for proportioning in determining the corner location?



(i) I, James H. Moore  
 (type or print name) certify that the corner location shown on this record was determined by me or under my direction and control and that this U.S. Public Land Survey Monument Record is correct and complete to the best of my knowledge and belief.

James H. Moore January 6, 1997  
 Signature Date