

U.S. PUBLIC LAND SURVEY MONUMENT RECORD

Index No. J-15

State of Wisconsin }
County of Forest } ss.

I, William B. Cochrane, do hereby certify that on the 1st day of August, 1991, I found evidence of the South Quarter corner of Section 10 Township 40 North, Range 13, Fourth Principal Meridian, as described hereon; and that from this evidence I established a new monument and accessories as described hereon to perpetuate the original location of this corner.

Resident witnesses:

.....
.....
.....

History of original corner establishment:

Original Government Survey in 1865 by William E. Daugherty. West corrected between Sections 10 and 15, at 39.90 chains, set Quarter Section Post, From which the following bear;

Birch	10"	S65°E	17 lks.
Cedar	10"	N18°W	20 lks.

Description of corner evidence found:

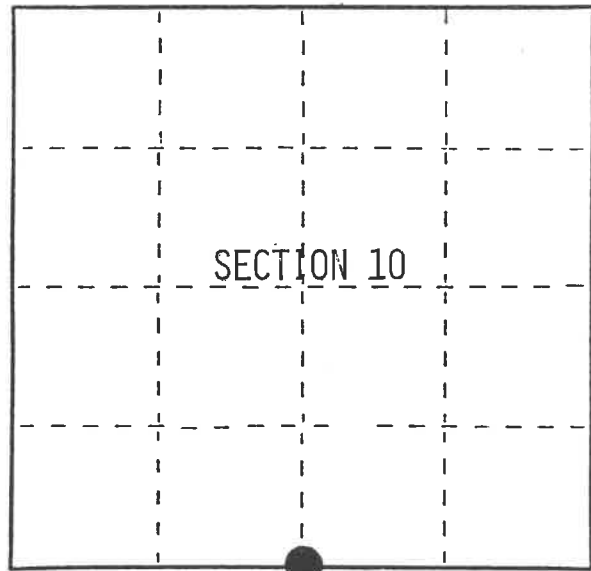
No corner evidence was recovered.

I re-established the corner position at mid-point and on line between the Southeast and Southwest Section Corners of Section 10.

Description of monument and accessories I established to perpetuate the original location of this corner.

At the corner position, set a 2½ inch diameter aluminum pipe monument, 5 feet long, 4 feet in the ground, with an aluminum cap stamped; T40N R13E, 1/4, S10, S15, 1991, S-1107. From which the following new blazed and scribed bearing trees bear;

Cedar	16"	N41°E	45.60 feet
B. Ash	4"	S10°E	10.58 feet
Set- Steel Sign Post		NE	0.50 feet



○ = Corner monument restored.

Dated at Hiles, Wis., this 19th day of February, 1992.

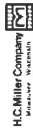
Signature: William B. Cochrane Title: Land Surveyor Registration No S-1107
(County Surveyor, Registered Land Surveyor, or other duly authorized official)

Office of Register of Deeds, County of Forest, I hereby certify that the within instrument was filed in this office for record on the 3rd day of August, 1992 at 10:15 o'clock A.M.

Paul Schenckner
(Register of Deeds)

By Deputy

FORM NO. 985-A



Stock No. 26273
DOCUMENT NUMBER
145357

44013100020

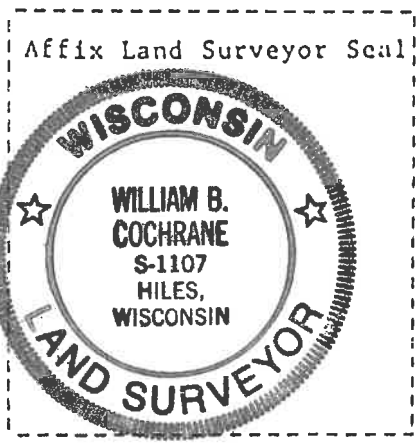
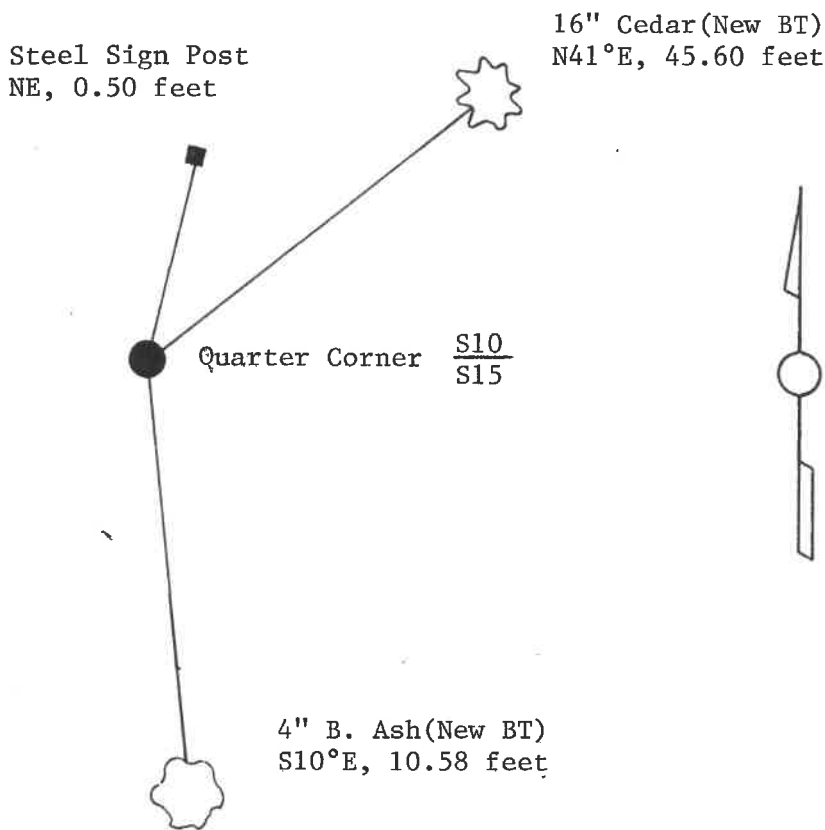
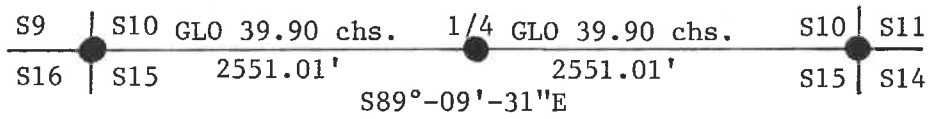
(e) Describe any material discrepancy between the location of the corner as restored or reestablished and the location of the corner as previously restored or reestablished by distance and direction. Show the discrepancy on the plan view drawing under (d), above. Show the distances between the corner as previously restored or reestablished and (1) the corner as restored or reestablished, and (2) to at least 2 of the witness monuments shown on the drawing in (d), above.

See drawing below.

(f) Was the corner restored through acceptance of (1) an obliterated evidence location, or, (2) a found perpetuated location?

(g&h) Was the corner reestablished through lost corner proportionate methods? If so, show the method, including the directions and distances to other public land survey corners used as evidence or used for proportioning in determining the corner location?

Re-established through lost corner proportionate methods.



(i) I, William B. Cochrane
 (type or print name) certify that the corner location shown
 on this record was determined by me or under my direction and
 control and that this U.S. Public Land Survey Monument Record is
 correct and complete to the best of my knowledge and belief.

William B. Cochrane March 25, 1992
 Signature Date

Survey requested by; Pam Gardier 3/23/92
 District Ranger Date

CERTIFIED LAND CORNER RESTORATION

Index No. J-15

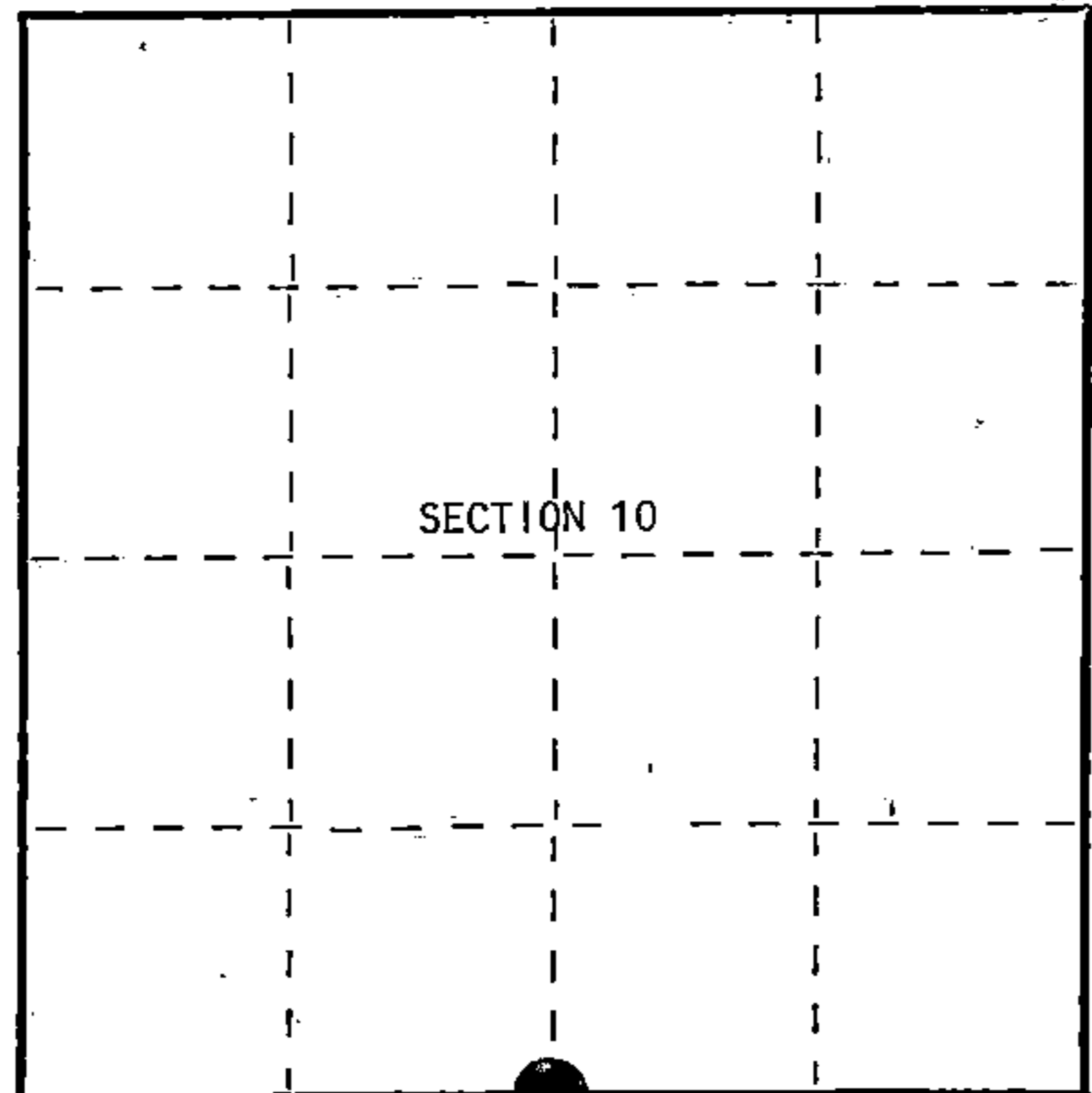
State of Wisconsin }
 County of Forest } ss.

I, James H. Moore, do hereby certify that on the 18th day of June, 1996, I found evidence of the South Quarter corner of Section 10 Township 40 North, Range 13 East, Fourth Principal Meridian, as described hereon; and that from this evidence I established a new monument and accessories as described hereon to perpetuate the original location of this corner.

Resident witnesses:

Stu Peterson

Steve Applekamp



○ = Corner monument restored.

History of original corner establishment:

Original government survey in 1865 by William E. Daugherty. West connected between Section 10 and 15, at 39.90 chains set quarter section post, from which the following bear;

Birch	10"	S65°E	17 lks
Cedar	10"	N18°W	20 lks

Description of corner evidence found:

No original corner evidence found. I re-established the corner position at mid-point and on line between the southwest and southeast section corners of Section 10.

Description of monument and accessories I established to perpetuate the original location of this corner.

At the corner re-positioned a 2½" diameter pipe monument, 5 feet long, with an aluminum cap stamped; T40N, R13E, ¼, S10, S15, 1996, S-1641, from which the following bear;

Cedar	16"	N66°E	43.87 feet
Ash	4"	S11°E	15.36 feet
Ash	8"	S65°E	32.64 feet
Ash	8"	N62°W	26.95 feet
Steel Sign Post		SW	0.86 feet

Dated at Hiles, Wis., this 6th day of January, 1997

Signature: *James H. Moore* Title: Land Surveyor Registration No. S-1641
 (County Surveyor, Registered Land Surveyor, or other duly authorized official)

Office of Register of Deeds, County of Forest. I hereby certify that the within instrument was filed in this office for record on the 17th day of December, 1997 at 9:27 o'clock A.M.

(Register of Deeds)
 By: *John J. Jankiewicz* Deputy

160524

FORM 985 H. C. MILLER CO., MILWAUKEE

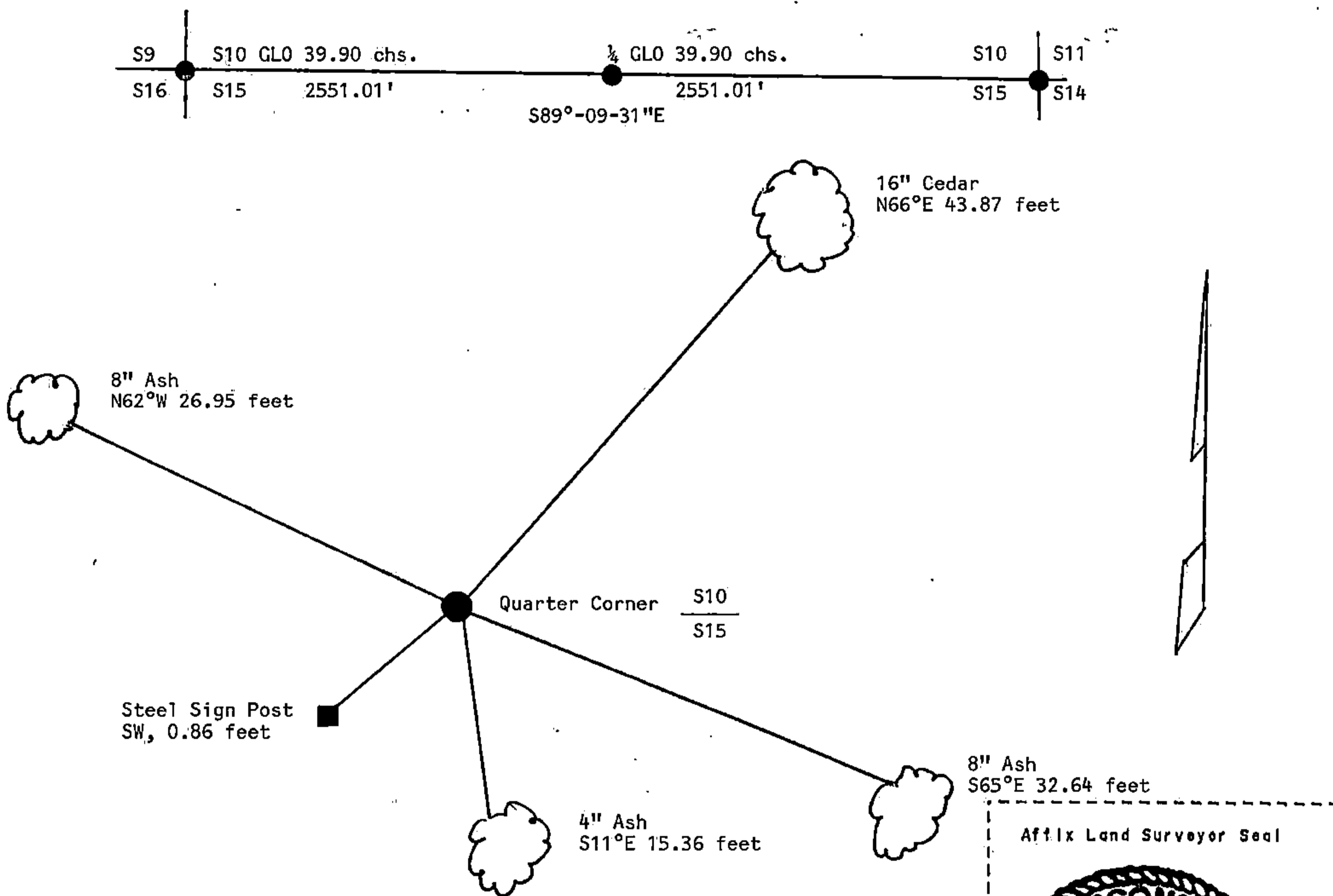
4401310 0020

(e) Describe any material discrepancy between the location of the corner as restored or reestablished and the location of that corner as previously restored or reestablished by distance and direction. Show the discrepancy on the plan view drawing under (d). above. Show the distances between the corner as previously restored or reestablished and (1) the corner as restored or reestablished, and (2) to at least 2 of the witness monuments shown on the drawing in (d). above.

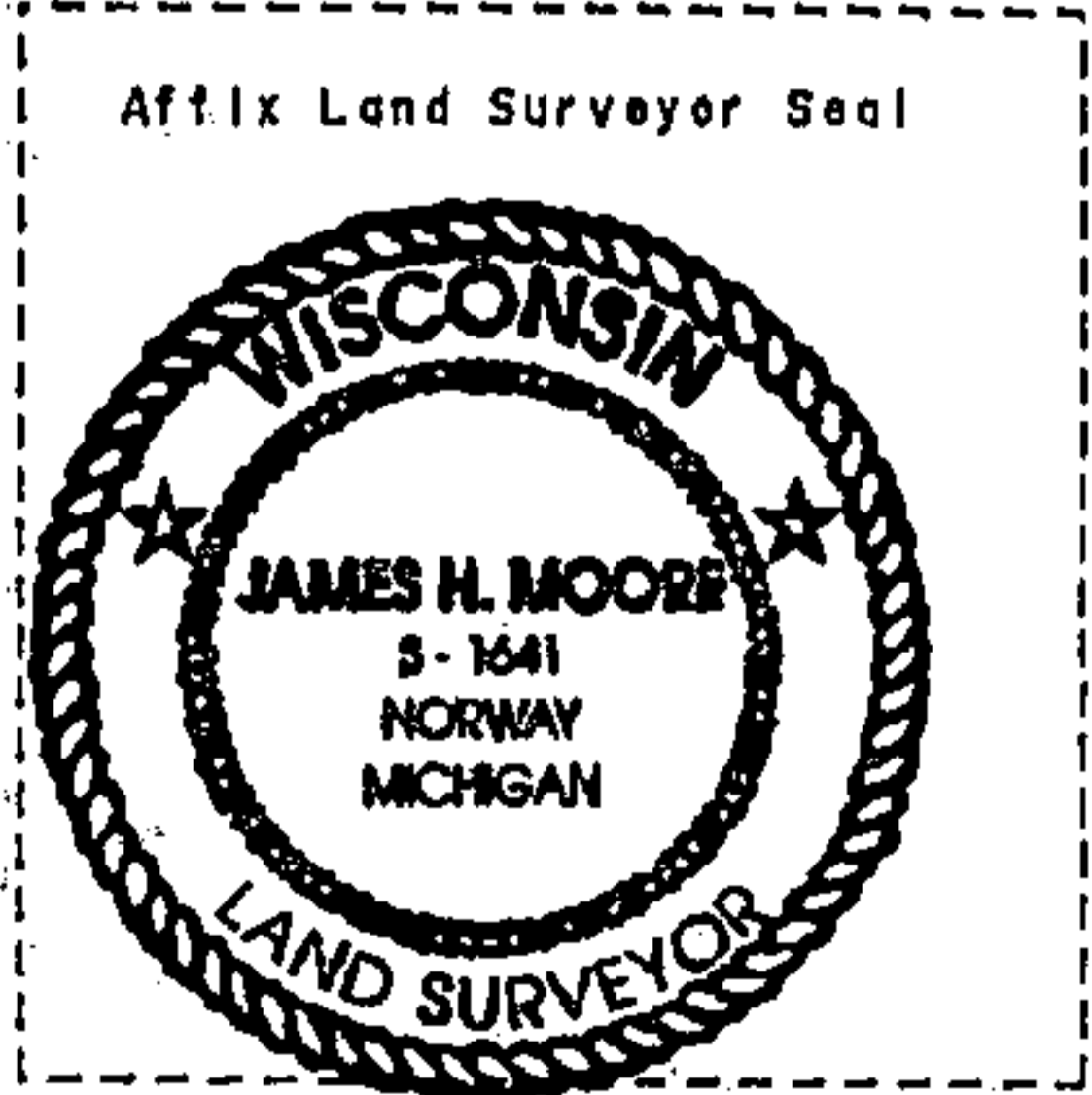
See drawing below.

(f) Was the corner restored through acceptance of (1) an obliterated evidence location, or, (2) a found perpetuated location?

(g & h) Was the corner reestablished through lost corner proportionate methods? If so, show the method, including the directions and distances to other public land survey corners used as evidence or used for proportioning in determining the corner location?



(1) I, James H. Moore
 (type or print name) certify that the corner location shown on this record was determined by me or under my direction and control and that this U.S. Public Land Survey Monument Record is correct and complete to the best of my knowledge and belief.



James H. Moore January 6, 1997
 Signature Date

CERTIFICATE READY FOR FILING: _____
 District Ranger