

U.S. PUBLIC LAND SURVEY MONUMENT RECORD

Index No. J-11

State of Wisconsin }
County of Forest } ss.

History of original corner establishment:
Original Government Survey in 1865 by William E. Daugherty.

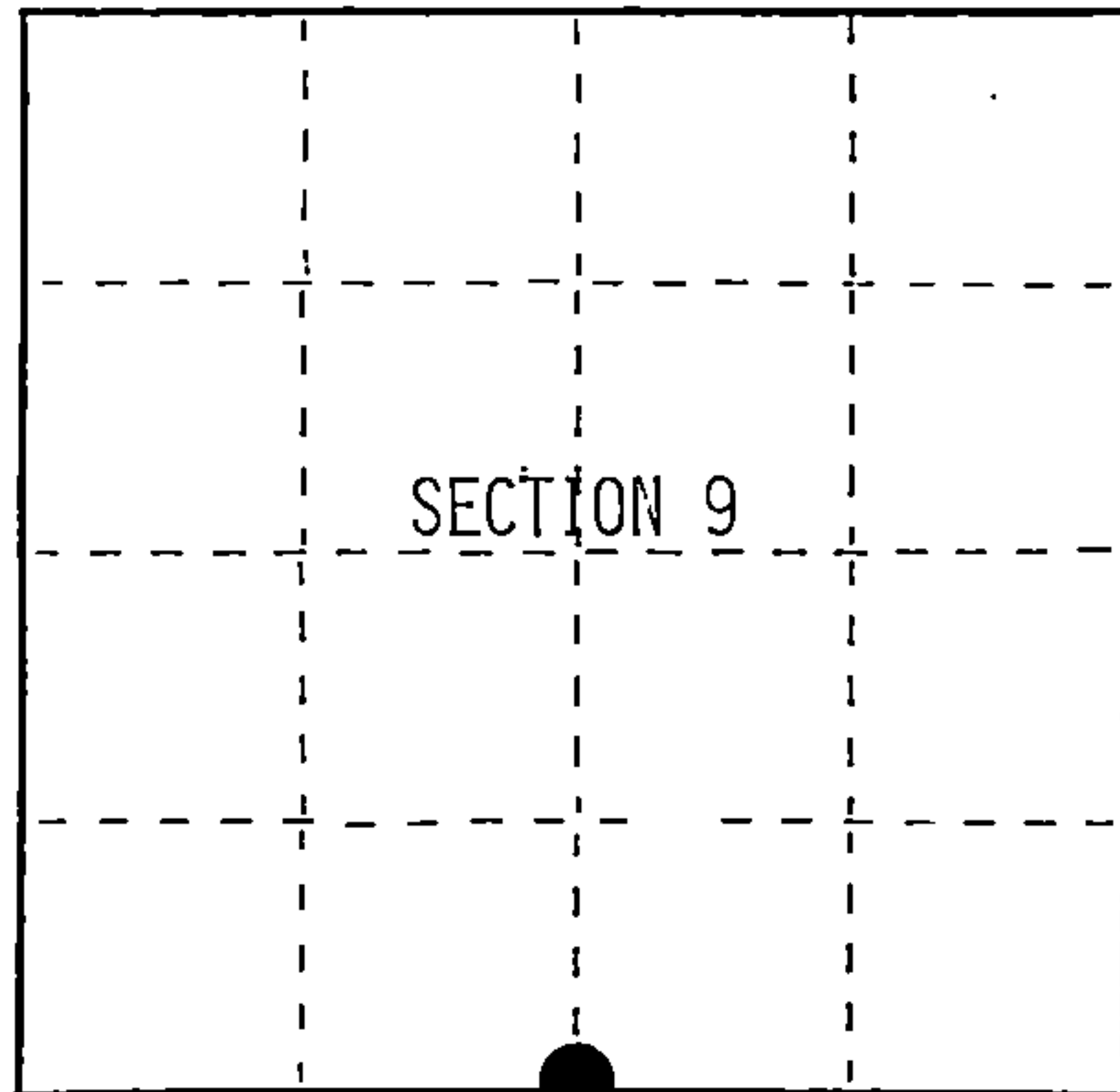
I, William B. Cochrane, do hereby certify that on the 27th day of June, 1991, I found evidence of the South Quarter corner of Section 9 Township 40 North, Range 13 East, Fourth Principal Meridian, as described hereon; and that from this evidence I established a new monument and accessories as described hereon to perpetuate the original location of this corner.

Dependent Resurvey in 1975 by Barry Krebs. At proportionate distance, set an iron post, 30 inches long, 2 1/2 inches in diameter, with a brass cap marked; T40N R13E, 1/4, S9, S16, 1975. From which the following bear;
W. Birch 11" N54°E 26 lks. (17.16 feet)
Maple 8" S15°W 26 lks. (17.16 feet)

Description of corner evidence found:
Found monument as described and in place, from which the following bear;
W. Birch 13" N54°E 17.16 feet
Maple 16" S15°W 17.16 feet

Resident witnesses:
.....
.....
.....

Description of monument and accessories I established to perpetuate the original location of this corner.
Re-painted bearing trees and set a Steel Sign Post South, 0.50 feet from monument.



○ = Corner monument restored.

Dated at Hiles, Wis., this 18th day of February, 1992

Signature William B. Cochrane Title Land Surveyor Registration No. S-1107
(County Surveyor, Registered Land Surveyor, or other duly authorized official)

Office of Register of Deeds, County of Forest, I hereby certify that the within instrument was filed in this office for record on the 31st day of August, 1992 at 10:15 o'clock A.M.

Paul Achenbrenner
(Register of Deeds)

By.....Deputy

FORM NO. 985-A

H.C. Miller Company

Stock No. 26273
DOCUMENT NUMBER
145355

4401309 0020

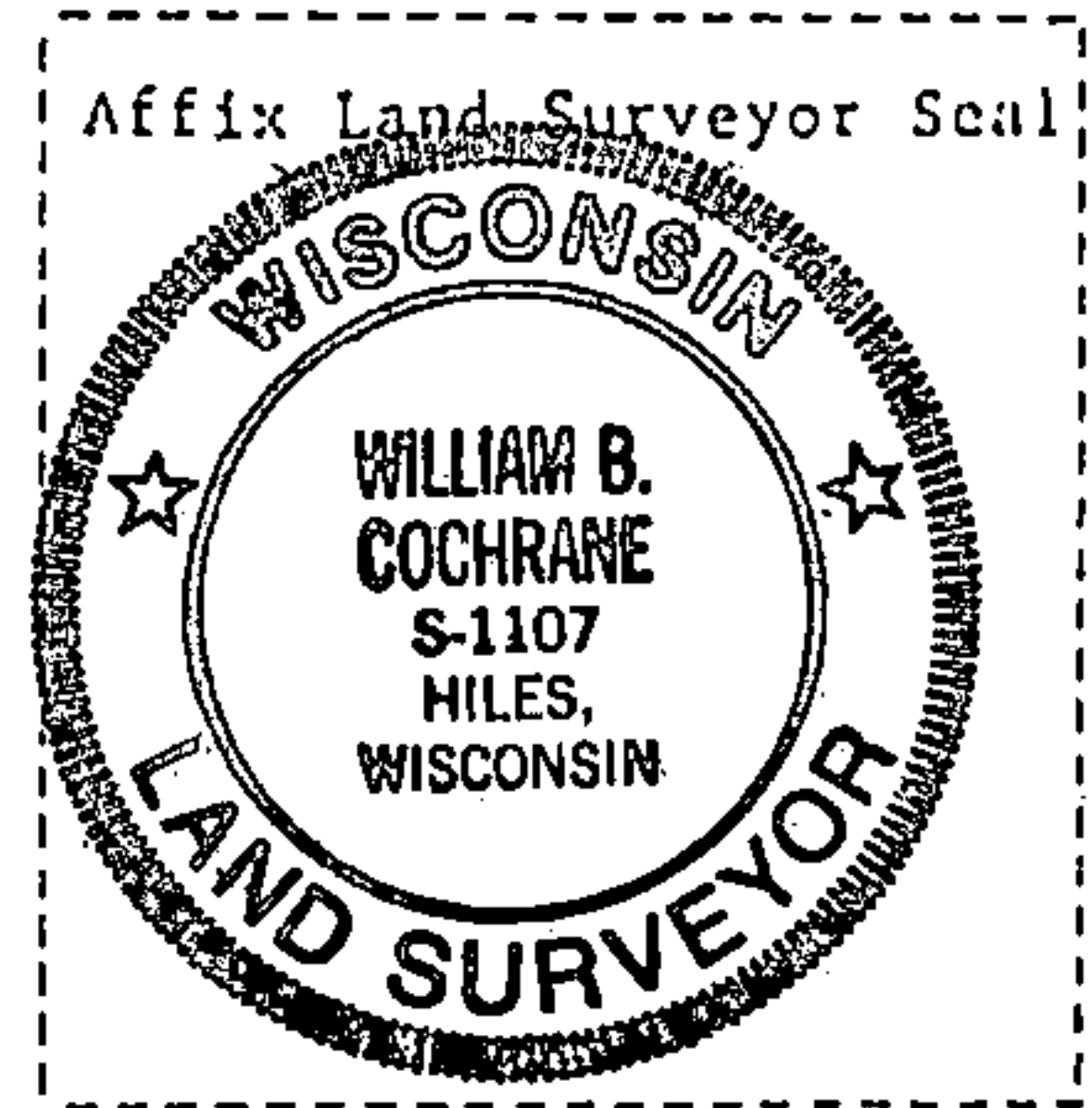
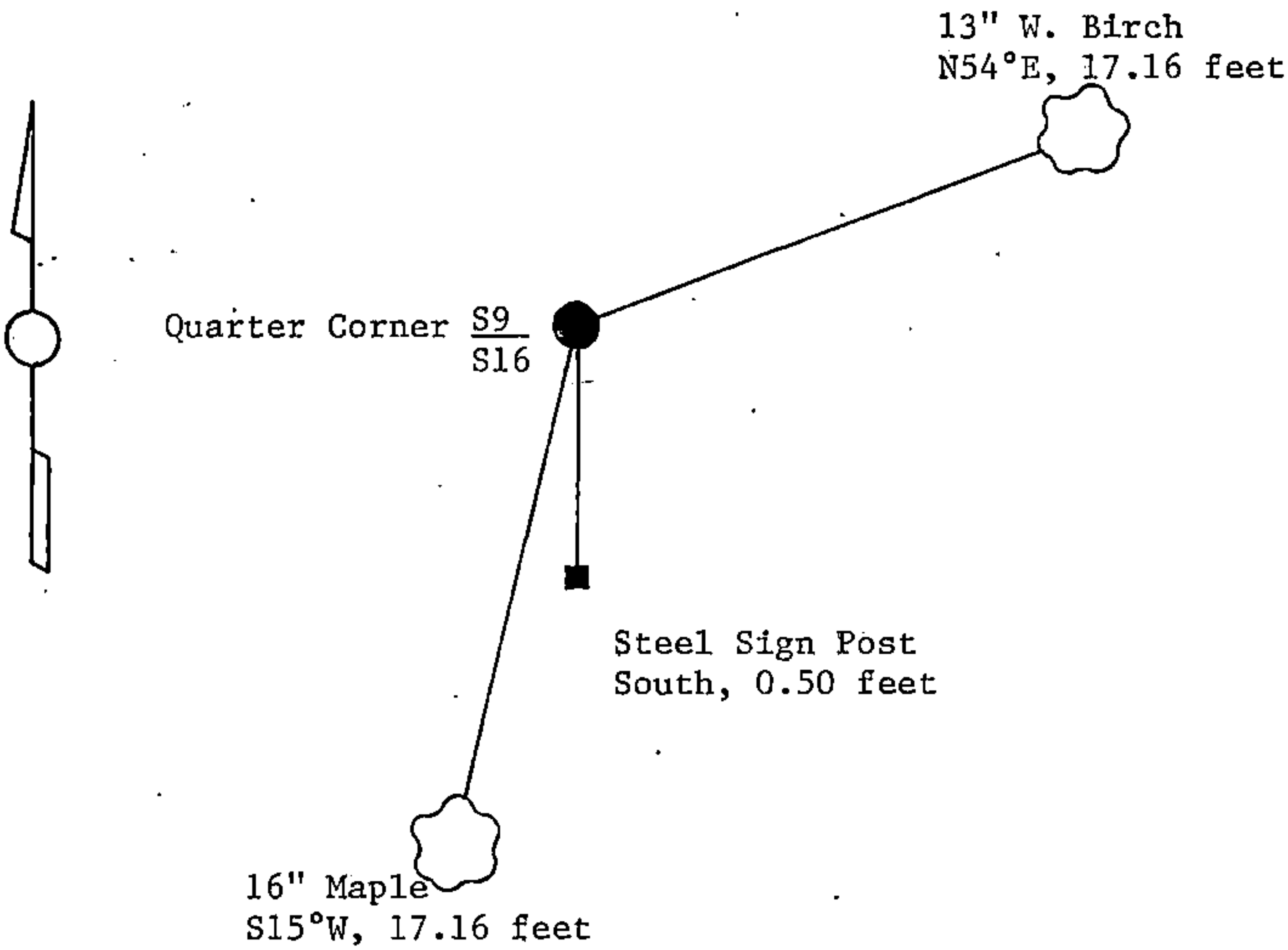
(e) Describe any material discrepancy between the location of the corner as restored or reestablished and the location of that corner as previously restored or reestablished by distance and direction. Show the discrepancy on the plan view drawing under (d), above. Show the distances between the corner as previously restored or reestablished and (1) the corner as restored or reestablished, and (2) to at least 2 of the witness monuments shown on the drawing in (d), above.

See drawing below.

(f) Was the corner restored through acceptance of (1) an obliterated evidence location, or, (2) a found perpetuated location?

Restored through acceptance of a found perpetuated location.

(g&h) Was the corner reestablished through lost corner proportionate methods? If so, show the method, including the directions and distances to other public land survey corners used as evidence or used for proportioning in determining the corner location?



(i) I, William B. Cochrane
 (type or print name) certify that the corner location shown on this record was determined by me or under my direction and control and that this U.S. Public Land Survey Monument Record is correct and complete to the best of my knowledge and belief.

William B. Cochrane March 25, 1992
 Signature Date

Survey requested by: Pam Fort 3/23/92
 District Ranger Date