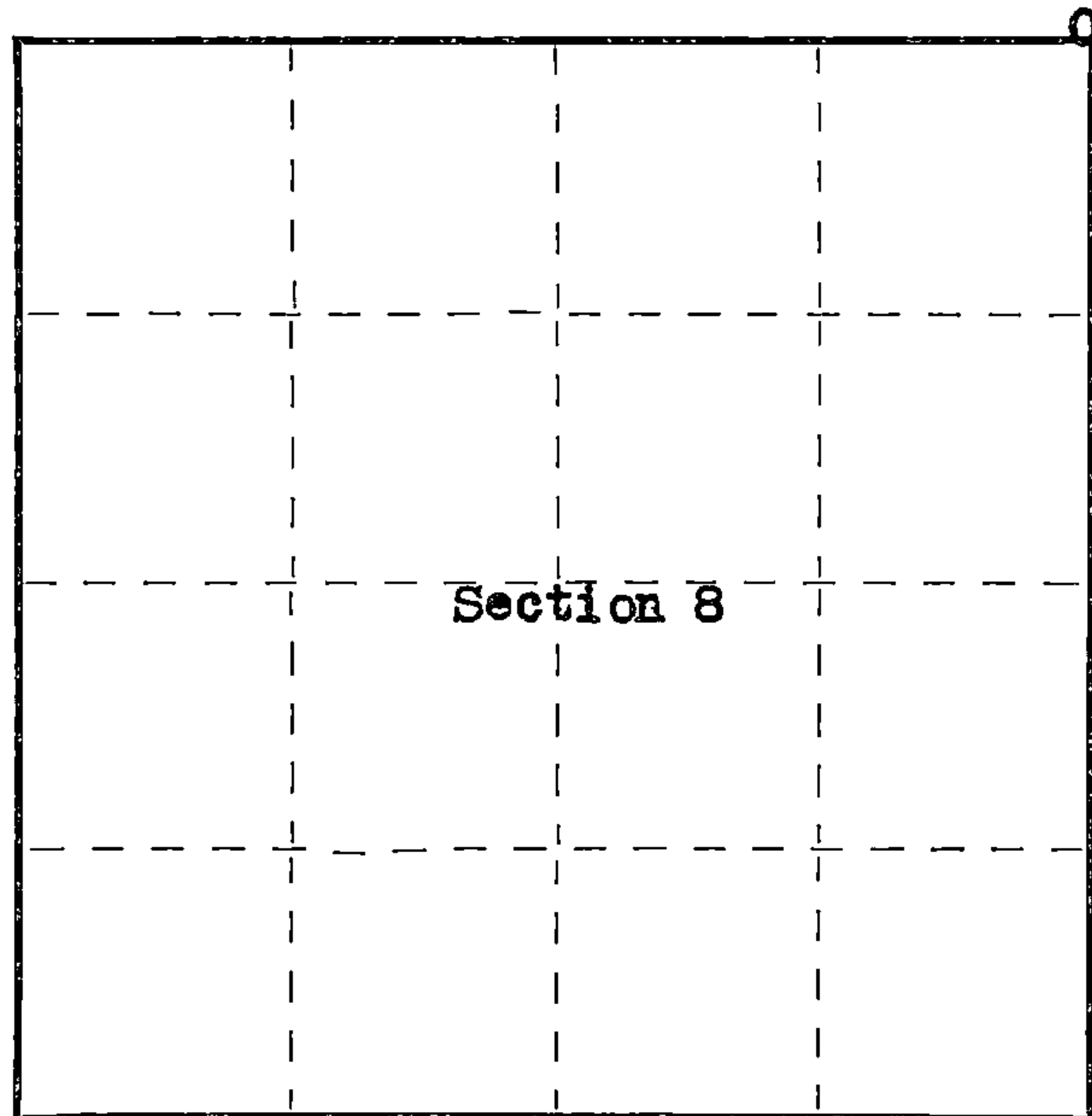
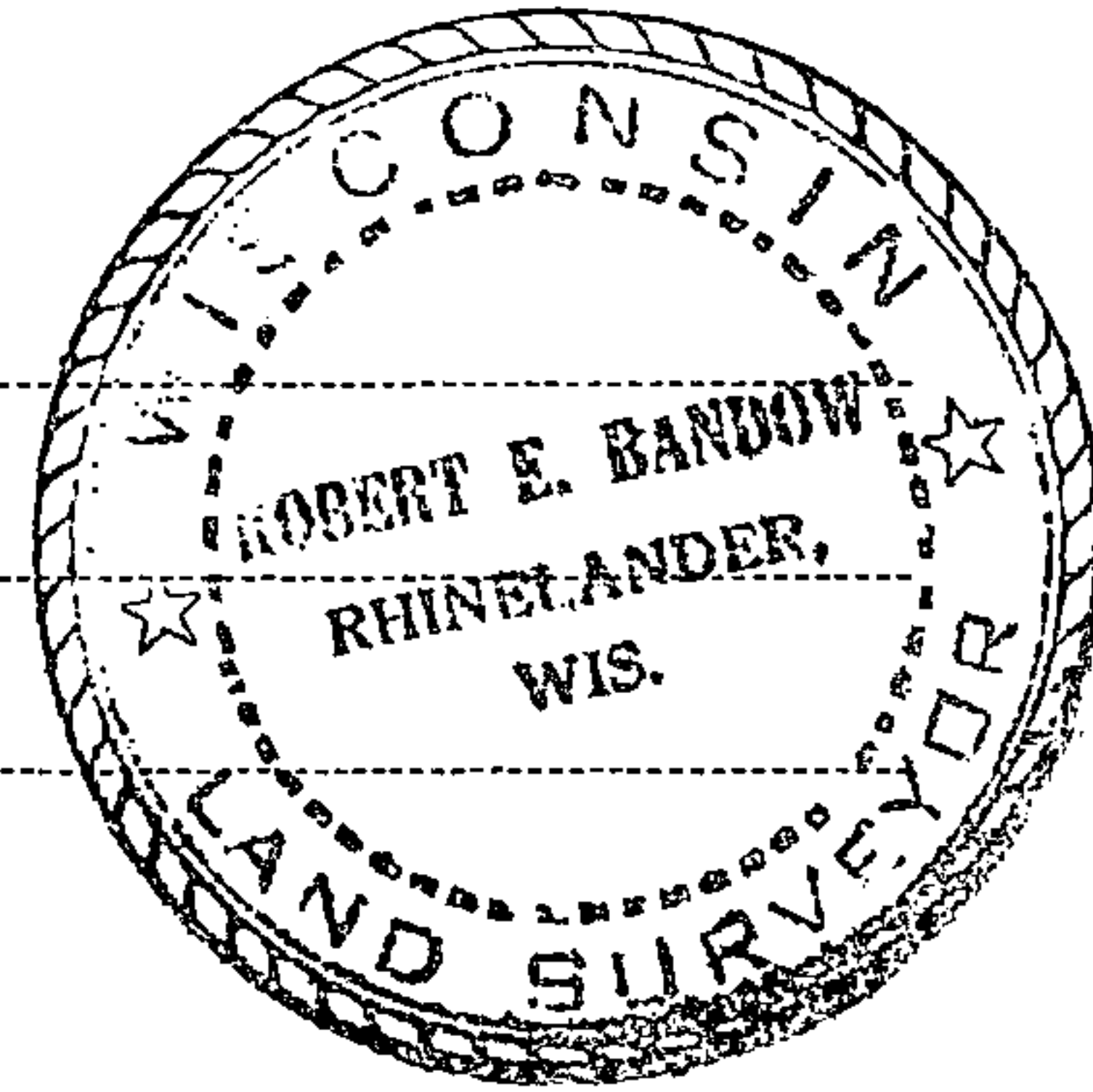


State of Wisconsin }
County of Forest } ss.

I Robert E. Bandow, do hereby certify that on the 10th day of November, 19 59, I found evidence of the North-East corner of Section 8 Township 40, North, Range 13 East, Fourth Principal Meridian, as described hereon; and that from this evidence I established a new monument and accessories as described hereon to perpetuate the original location of this corner.

Resident witnesses:



○ = Corner monument restored.

History of original corner establishment:

Original corner established in 1862 and 1865 by William E. Dougherty, Government Deputy Surveyor.
White Birch 12" N13E 21 lks.
Sugar 10" N74°W 25 lks.

Description of corner evidence found:

4"x4" wood post very old and scribed. Old bearing trees gone. Post was a pine, scribing in good condition. Section line tag on north side of highway 70 and position of corner south of highway with respect to 1938 Geological Survey Quadrangle indicates corner has been perpetuated by others in its present position without question.

Description of monument and accessories I established to perpetuate the original location of this corner. Set 2"x5' Galvanized Iron pipe filled with concrete, capped with bronze cap and stamped as follows:

T41N R13E
S5/S4
S8/S9
1959

RLS No. S-104

Blazed and scribed the following bearing trees: White Birch 6" S80°W 21.4 feet
Spruce 8" S85°30'E 16.5 feet
Norway Pine 7" N7°30'E 61.5 feet

Genisot Engineering Company

Dated at Rhineland, Wis., this 30th day of November, 1959

Signature Robert E. Bandow Title Registered Land Surveyor Registration No. S-104
(County Surveyor, Registered Land Surveyor, or other duly authorized official)

Office of Register of Deeds, County of Forest, I hereby certify that the within instrument was filed in this office for record on the 21st day of March, 19 60 at 9:00 o'clock A. M.

Anna Peterson
(Register of Deeds)

By _____ Deputy

Subscribed and sworn to before me this 10th day of November, 1959. Joseph E. B. B. Notary Public, Oneida County, Wis.

My Commission expires May 1, 1960
44013050000

U.S. PUBLIC LAND SURVEY MONUMENT RECORD

Index No. E-9

State of Wisconsin }
County of Forest } ss.

I, William B. Cochran, do hereby certify that on the 27th day of June, 1991, I found evidence of the Northwest Section corner of Section 9 Township 40, North, Range 13 East, Fourth Principal Meridian, as described hereon; and that from this evidence I established a new monument and accessories as described hereon to perpetuate the original location of this corner.

Resident witnesses:

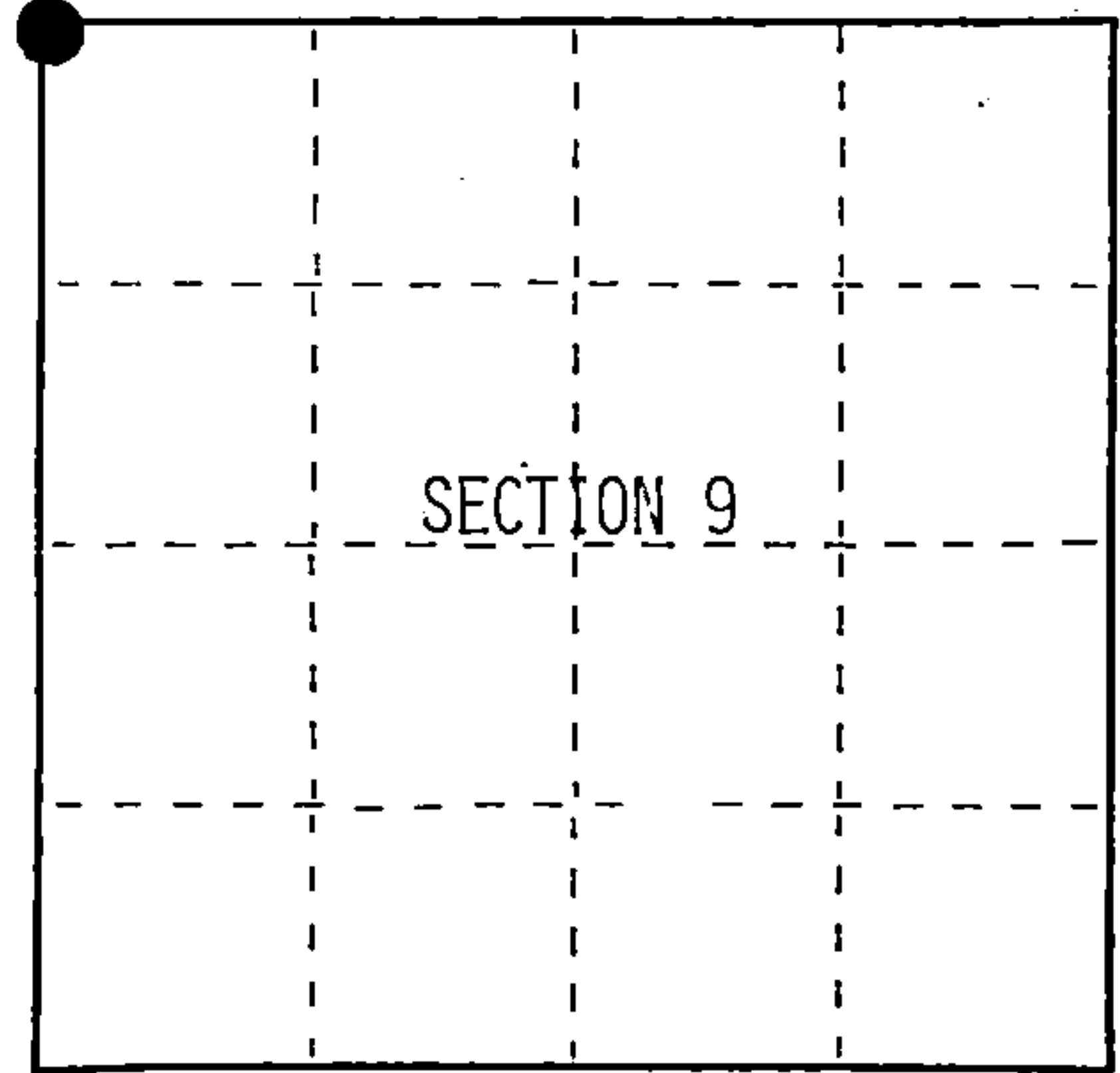
History of original corner establishment:
Original Government Survey in 1865 by William E. Daugherty.

In 1959 Robert Bandow found 4"x4" scribed wood post. No bearing tree evidence. In place of post, set a 2"x5' galvanized iron pipe, with a bronze cap stamped; T40N R13E, S4, S5, S8, S9, 1959, S-104. From which the following bear;
W. Birch 6" S80°W 21.40 feet
Spruce 8" S85°30'E 16.50 feet
N. Pine 7" N07°30'E 61.50 feet
See Land Corner Restoration Certificate.

Description of corner evidence found:
Found monument as described above, in place, from which the following bear;
N. Pine 12" N07°30'E 61.50 feet
Spruce-Dead 11" S85°30'E 16.50 feet
W. Birch 13" S80°W 21.40 feet

Description of monument and accessories I established to perpetuate the original location of this corner.
Blazed and scribed the following new bearing trees;
Spruce 9" S32°E 35.30 feet
Red Pine 16" N37°E 38.35 feet
Set Steel Sign Post SE 0.50 feet

Re-painted existing bearing trees,



○ = Corner monument restored.

Dated at Hiles, Wis., this 18th day of February, 1992

Signature William B. Cochran Title Land Surveyor Registration No. S-1107
(County Surveyor, Registered Land Surveyor, or other duly authorized official)

Office of Register of Deeds, County of Forest, I hereby certify that the within instrument was filed in this office for record on the 31st day of August, 1992 at 10:15 o'clock A. M.

Paul Achenbrenner
(Register of Deeds)

By _____ Deputy

FORM NO. 985-A
H.C. Miller Company
MILWAUKEE, WISCONSIN

Stock No. 26273
DOCUMENT NUMBER
145350

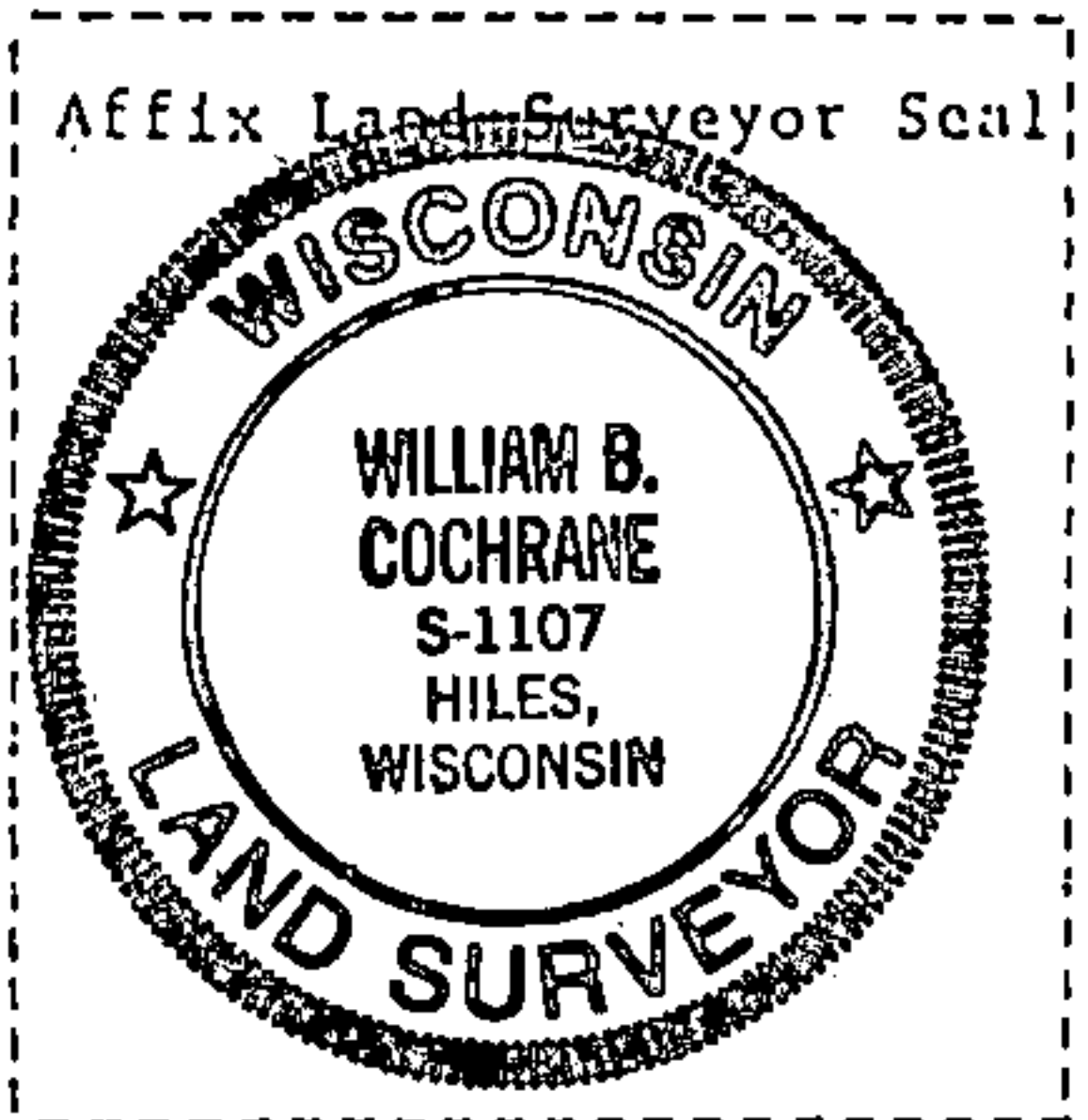
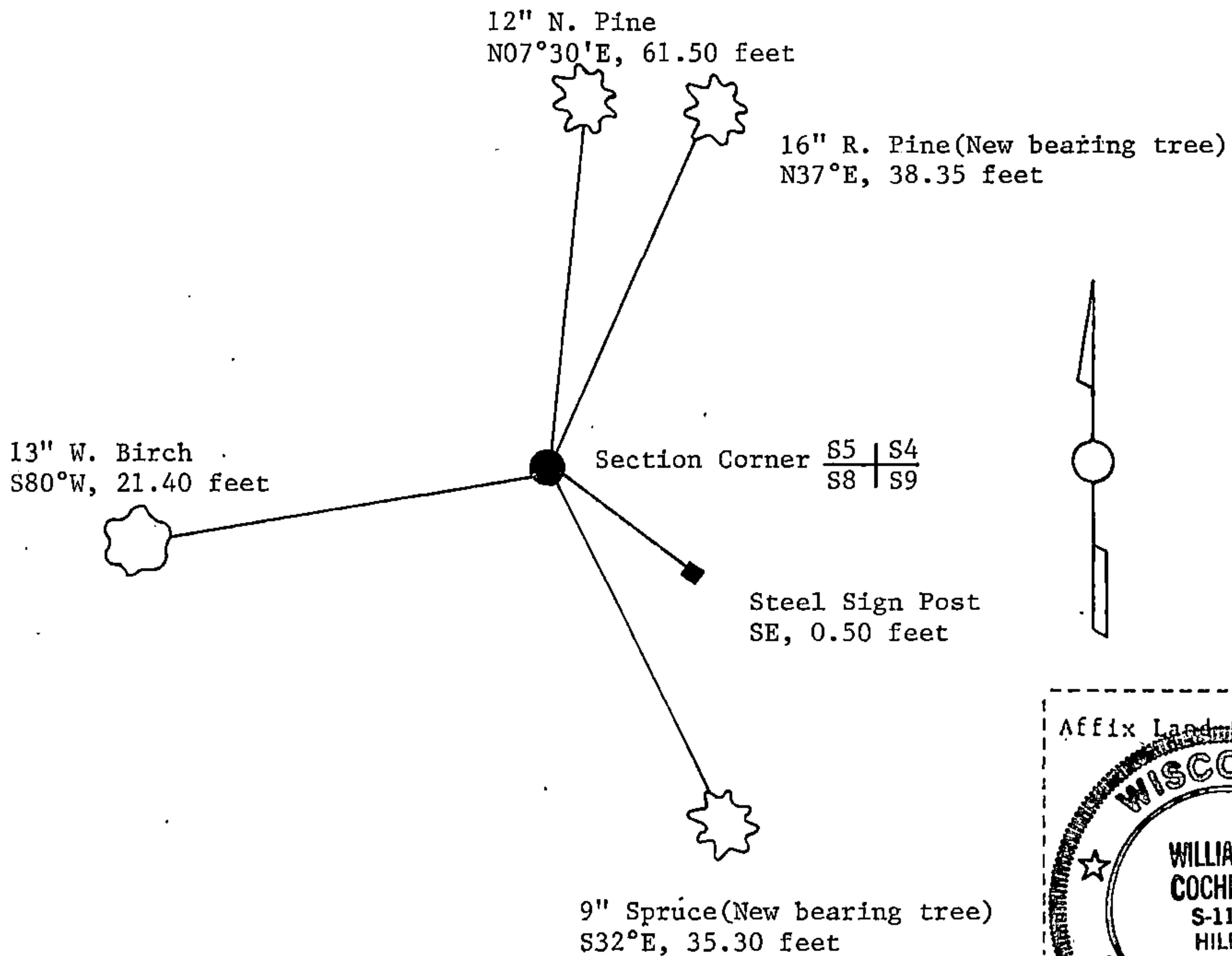
44013050000

(e) Describe any material discrepancy between the location of the corner as restored or reestablished and the location of that corner as previously restored or reestablished by distance and direction. Show the discrepancy on the plan view drawing under (d), above. Show the distances between the corner as previously restored or reestablished and (1) the corner as restored or reestablished, and (2) to at least 2 of the witness monuments shown on the drawing in (d), above.

(f) Was the corner restored through acceptance of (1) an obliterated evidence location, or, (2) a found perpetuated location?

Restored through acceptance of a found perpetuated location.

(g&h) Was the corner reestablished through lost corner proportionate methods? If so, show the method, including the directions and distances to other public land survey corners used as evidence or used for proportioning in determining the corner location?



(i) William B. Cochrane
(type or print name) certify that the corner location shown on this record was determined by me or under my direction and control and that this U.S. Public Land Survey Monument Record is correct and complete to the best of my knowledge and belief.

William B. Cochrane March 25, 1992
Signature Date

Survey requested by: Pat Gorman 3/23/92
District Ranger Date