

U. S. PUBLIC LAND SURVEY
MONUMENT RECORD

NOTE: This form is intended and designed to fulfill all requirements of Wisconsin Administrative Code, Chapter A-E 7.08 U.S. Public Land Survey Monument Record (3) (a-i)

A-E 7.08(3)(a) Identity of corner:
Meander Corner - East line Section 20,
Township 40 North, Range 12 East
of the Fourth Principal Meridian,
Town of Hiles, Forest County, Wisconsin

WISCRS - FOREST COUNTY
N: 703,243.505 USft (XXX,XXX.XXX)
E: 809,718.066 USft (XXX,XXX.XXX)
Datum: NAD83 (2011)
GNSS Method RTN
GNSS Control WISCORS VRS



The coordinate value shown has been verified by the average of two or more GPS observations at a markedly different time. Coordinates shown in parenthesis are previously published values.

A-E 7.08(3)(b)

Original Surveyor: William E. Daugherty - September 15, 1859 to September 19, 1859
Hemlock 8 - N 12° E, 16 Links, Birch 8 - N 45° W, 31 Links

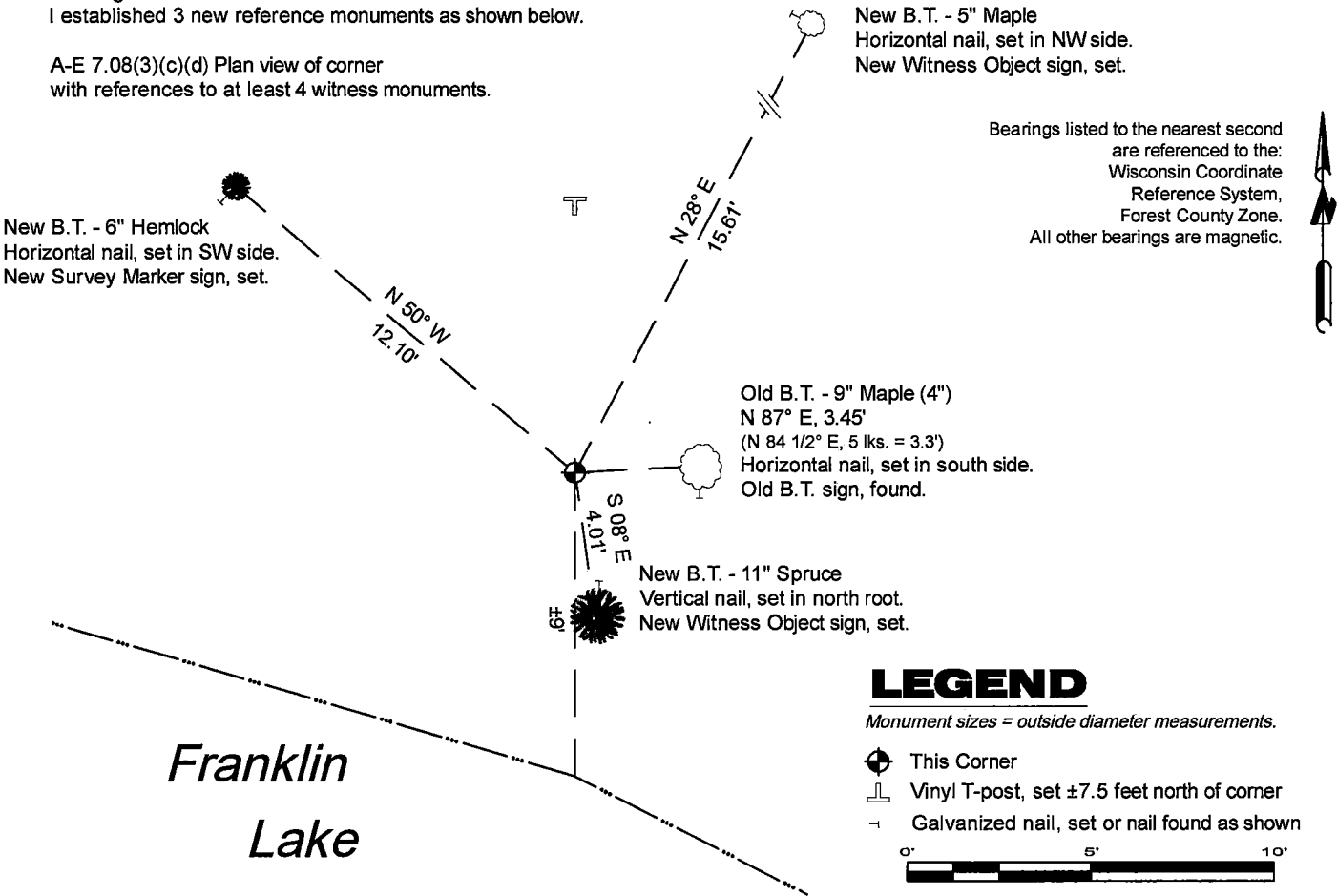
THENCE:

- June 16 - October 25, 1941 - Surveyor Guy R. Veal Cadastral Engineer - United States Department of the Interior / General Land Office, set an "iron post, 3 ft. long, 2 ins. diam., 27 ins. in the ground...with brass cap mkd." from which,
A maple, 4 ins. diam., bears S. 84 1/2° E., 5 lks. (3.3')
A maple, 5 ins. diam., bears N. 66 1/2° W., 6 1/2 lks. (4.29')
- 1966 - Surveyor V.C. Steffek - Indicates this position as "cement post" on map provided by client.
- September 1969 - Surveyor 802 - Jean F. Resvick - indicates this position as "B.L.M. - 1941 Dependent Resurvey" on county record map #401220-19690131.
- 1996 - 2003 - Surveyor 2070 - Michael E. Weber - indicates this position as "G.L.O. monument found in place" on Certified Survey Map 155131, 162519, and 182424.
- February 9, 2018 - Surveyor 2566 - David A. Konopacky - indicates this position as "GLO brass capped concrete monument in place" on Certified Survey Map 224767.

June 16, 2025 - I found a 1.9" diameter galvanized iron pipe monument, with a 2.5" diameter brass cap stamped to identify the corner location. The monument is ±9 feet from the shore of Franklin Lake and extends ±10" above grade. I also found 1 of Veal's bearing trees alive and in good condition.

I established 3 new reference monuments as shown below.

A-E 7.08(3)(c)(d) Plan view of corner
with references to at least 4 witness monuments.



A-E 7.08(3)(e) 1859 Surveyor set a post, 1941 Surveyor set a 2" diameter iron post with a brass cap stamped to identify the corner location, subsequent Surveyors found similar. I found a 1.9" diameter galvanized iron pipe monument, with a 2.5" diameter brass cap stamped to identify the corner location in 2025.

A-E 7.08(3)(f) I accept this monument in good faith as a FOUND PERPETUATED LOCATION of the corner.

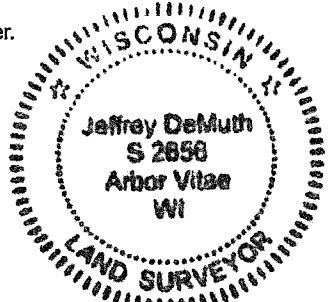
A-E 7.08(3)(g)(h) This corner was not determined through lost-corner-proportionate methods.

A-E 7.08(3)(i) I, Jeffrey L. DeMuth, Professional Land Surveyor No. S-2656, hereby certify that the corner location on this record was determined by me or under my direction and control, and that this U.S. Public Land Survey Monument Record is correct and complete to the best of my knowledge, and belief.

Signature

July 24, 2025

Date



44012202500

44012202500

09