

U.S. PUBLIC LAND SURVEY MONUMENT RECORD

Index No. J-21

State of Wisconsin }  
 County of Forest } ss.

I, Robert H. Winat, do hereby certify that on the 14th day of September, 1984, I found evidence of the Section corner of Sections 11, 12, 13, 14 Township 40, North, Range 12 East, Fourth Principal Meridian, as described hereon; and that from this evidence I established a new monument and accessories as described hereon to perpetuate the original location of this corner.

Resident witnesses:

Robert H. Winat

Michael G. Stevens

History of original corner establishment:

Original corner set by Wm. Daugherty, Deputy Surveyor in 1859. Set Post.

BT's 12" Sugar Maple N32°W 9 lks. (5.94 ft.)  
 10" Sugar Maple S24°E 18 lks. (11.88 ft.)

Description of corner evidence found:

1941-G.L.O. resurvey-Proportionate distance; there is/no remaining evidence of the corner post or BT's. Set an iron post 2"x36", 27" in the ground for corner of Sections 11,12,13 and 14 with a brass cap stamped to identify corner.

BT's 8" Maple N40°15'E 64 lks.  
 9" Maple S72°45'E 51.5 lks.  
 8" Maple S38°45'W 65 lks.  
 8" Maple N59°15'W 145 lks.

1984-North Country Surveyors-found a 2" diameter iron pipe up 9" w/ brass cap stamped to identify corner. Found 1941 BT's as follows:

~~Description of monument and accessories established to perpetuate the original location of this corner~~

19" Maple N39°E 42.24 ft.  
 20" Sugar Maple N60°W 95.75 ft.

Both trees in good condition. Repainted, placed nail in side to bring to std.

6" Sugar Maple N27°E 9.14 ft.  
 7" Sugar Maple S41°30'W 6.09 ft.  
 Metal Sign Post N 0°E 0.50 ft.

Continued on back side...

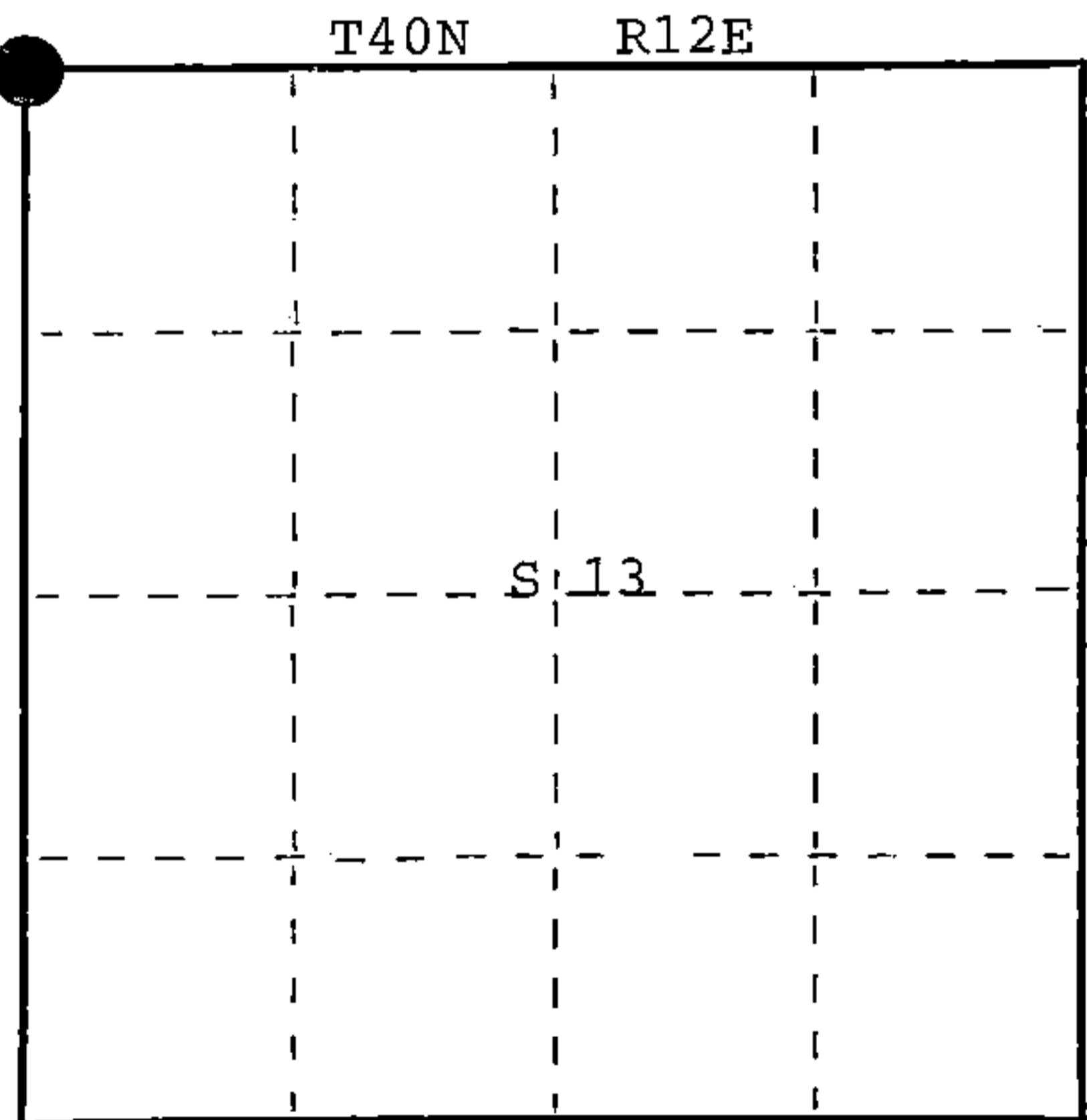
(over)  
 Dated at EAGLE RIVER, Wis., this 6 day of NOVEMBER, 1984.

Signature Robert H. Winat Title L.S. Registration No. 1060  
 (County Surveyor, Registered Land Surveyor, or other duly authorized official)

Office of Register of Deeds, County of Forest, I hereby certify that the within instrument was filed in this office for record on the 24th day of July, 1985 at 1:10 o'clock P. M.

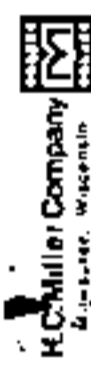
Paul Aschenbrenner  
 (Register of Deeds)

By..... Deputy



● = Corner monument restored.

FORM NO. 985-A



Stock No. 26273

DOCUMENT NUMBER 128445

4461210000

21-47

(e) Describe any material discrepancy between the location of the corner as restored or reestablished and the location of that corner as previously restored or reestablished by distance and direction. Show the discrepancy on the plan view drawing under (d), above. Show the distances between the corner as previously restored or reestablished and (1) the corner as restored or reestablished, and (2) to at least 2 of the witness monuments shown on the drawing in (d), above.

N/A

Continued from front page:

Description of monument and accessories I established to perpetuate the original location of this corner.

Put new sign on post monument, sign missing. Brought all trees to std. Painted red band around trees, blazed and painted same. Nail in side of tree at root crown. Made new BT's as follows:

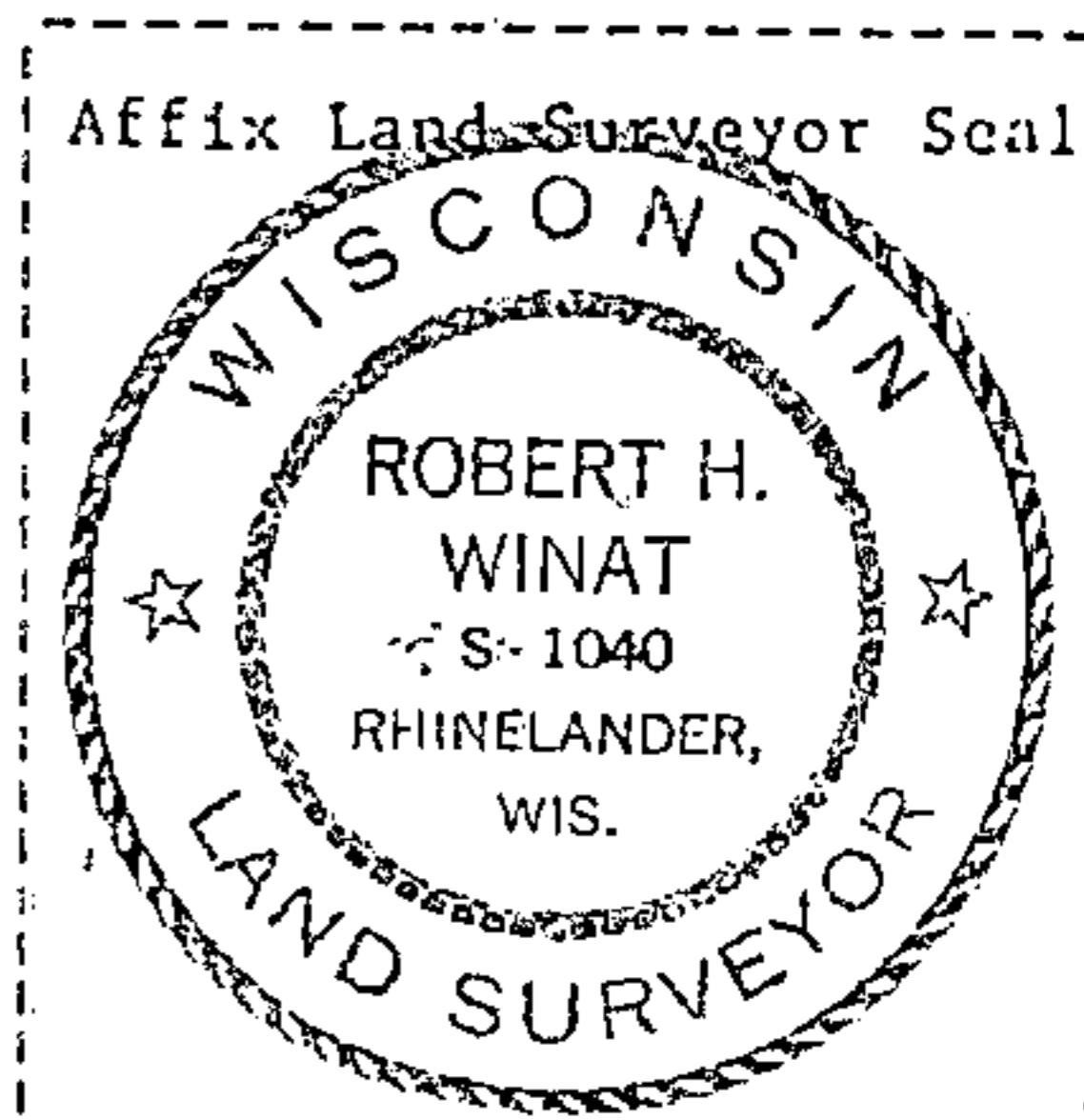
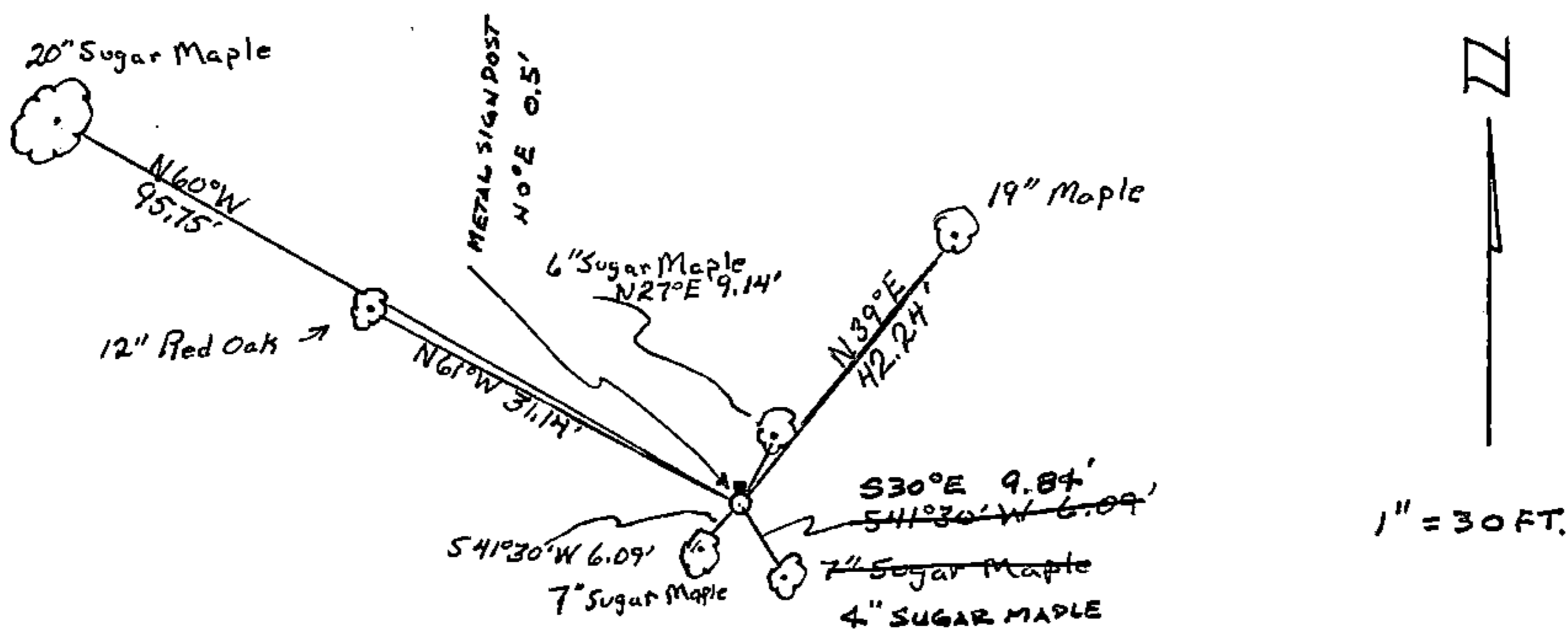
12" Oak	N61°W	31.14 ft.
4" Sugar Maple	S30°E	9.84 ft.

(f) Was the corner restored through acceptance of (1) an obliterated evidence location, or, (2) a found perpetuated location?

N/A

(g&h) Was the corner reestablished through lost corner proportionate methods? If so, show the method, including the directions and distances to other public land survey corners used as evidence or used for proportioning in determining the corner location?

N/A



(i) I, Robert H. Winat R.L.S. 1040  
 (type or print name) certify that the corner location shown on this record was determined by me or under my direction and control and that this U.S. Public Land Survey Monument Record is correct and complete to the best of my knowledge and belief.

Robert H. Winat 6 NOV. 1984  
 Signature Date