

U.S. PUBLIC LAND SURVEY MONUMENT RECORD

Note: This form is intended and designed to fulfill all requirements of Wisconsin Administrative Code, Chapter A-E 5.02, U.S. Public Land Survey Monument Record (3) (a) (b) (c) (d) (e) (f) (g) (h) (i). An additional sheet may be added if necessary to conform with said requirements.

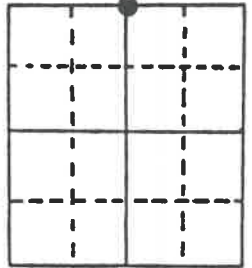
(a) Corner location: Township 40 North

Range 12 East/West

Town/City/Village _____ Hiles _____

County Forest

REGISTER'S OFFICE
Forest County, Wis.
Received for record this 9th day
of December, A.D., 1988 at
10:10 o'clock A.M. and recorded
in Vol. CORNER RESTORATIONS
PAGE A-23
Paul Aschenbrenner
Register of Deeds



Section 1

(b) (f) (g) (h) Description of monument found at this corner and if it was accepted, state all evidence (material, testimonial, occupational, plats, records, other monuments) used as a basis for accepting. If not accepted or if nothing was found, state evidence used as basis for establishing location. If reestablished through lost corner proportionate methods, indicate all monuments, distances and directions used to establish.

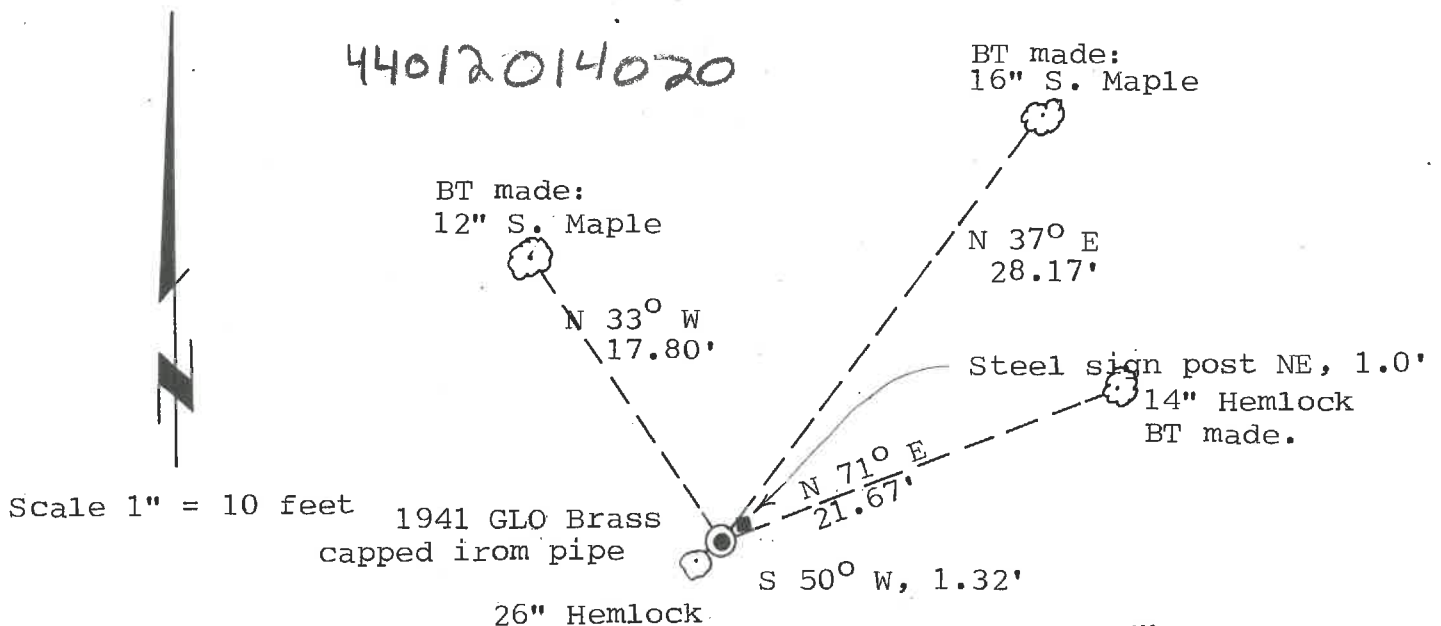
Found 2" diameter brass capped iron pipe stamped identifying the corner lying on the ground. The monument was re-established from the 1941 General Land Office Dependent Resurvey.

BT's recovered from the 1941 Resurvey:
18" Y. Birch Stump S 38° E 29.04 feet
26" Hemlock S 50° W 1.32 feet

From the BT's we were able to recover the hole in which the monument was evidently removed and reset monument off BT's. There has been some logging in this area that may have caused this disturbance.

(c) (d) (e) Plan view of corner with ties to at least 4 witness monuments. If in disagreement with previously established corner, show the distances between the two corners and also indicate the ties to the disputed corner.

Note: Measurements are to nail set in rootcrown of tree.



(i) I, Stephen J. Favorite RLS#S-1616
(type or print name) certify that the corner location on this record was determined by me or under my direction and control and that this U.S. Public Land Survey Monument Record is correct and complete to the best of my knowledge and belief.



Index No. A-23

Stephen J. Favorite April 8, 1988
Signature _____ Date 11/17/88
Survey requested by: *Carole Gora* District Ranger Date _____

140-15