

U.S. PUBLIC LAND SURVEY MONUMENT RECORD

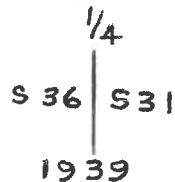
Index No. X-4

State of Wisconsin }
 County of Forest } ss.

I John H. Fisher, do hereby certify that on the 16 day of May, 1984, I found evidence of the One quarter corner of Sections 31 and 36 Township 40, North, Range 11 and 12 East Fourth Principal Meridian, as described hereon; and that from this evidence I established a new monument and accessories as described hereon to perpetuate the original location of this corner.

Resident witnesses:
None

History of original corner establishment: Original survey in 1857 by Alfred Millard; Dependent Resurvey in 1939 by Hal D. Craig; at 39.80 chains set an iron post 3 ft. long, 1 in. Diameter, Upper 24 ins. in a concrete monument, 4 ins. Diameter, 28 ins. in ground with brass tablet stamped;



From which the following bear:

Original White Pine Stump	24"	S64-1/2°E	28 lks.
Original White Pine Stump	26"	N16-3/4°W	25 lks.
New Bearing trees:			
White Birch	5"	N88-1/2°E	24 lks.
White Birch	8"	N27°W	27 lks.

Description of corner evidence found:

B.L.M. Monument as described and in place; and the following bearing trees:

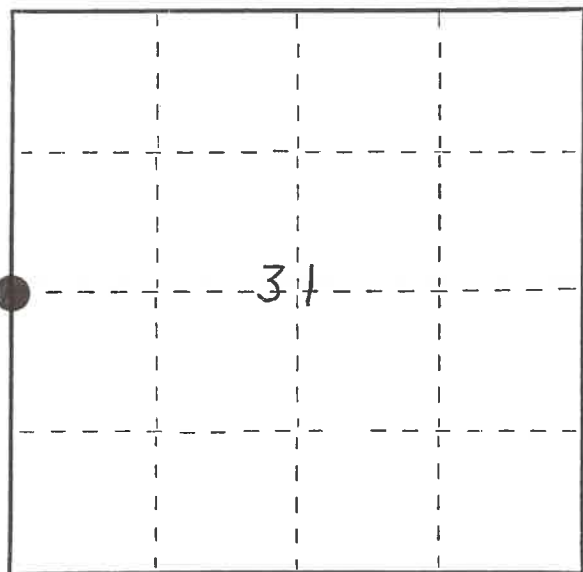
White Birch	10"	N28°W	17.3 feet
White Spruce	8"	S44°E	14.9 feet

Description of monument and accessories I established to perpetuate the original location of this corner.

Corner in good condition:

Blazed and scribed the following new bearing trees:

Red Oak	10"	N81°W	31.39 feet
White Spruce	7"	N43°E	33.21 feet
Set Steel Sign Post		N40°W	1.1 feet



○ = Corner monument restored.

Dated at Minocqua, Wis., this 22nd day of January, 1985.

Signature John H. Fisher Title Registered Land Surveyor Registration No. S-836
 (County Surveyor, Registered Land Surveyor, or other duly authorized official)

Office of Register of Deeds, County of Forest, I hereby certify that the within instrument was filed in this office for record on the 24th day of April, 1985 at 1:00 o'clock P. M.

Paul Aschenbrenner
 (Register of Deeds)

By _____ Deputy

FORM NO. 985-A

H.C. Miller Company
 MILWAUKEE, WISCONSIN

Stock No. 26273

Document Number 127878

4-4011362000

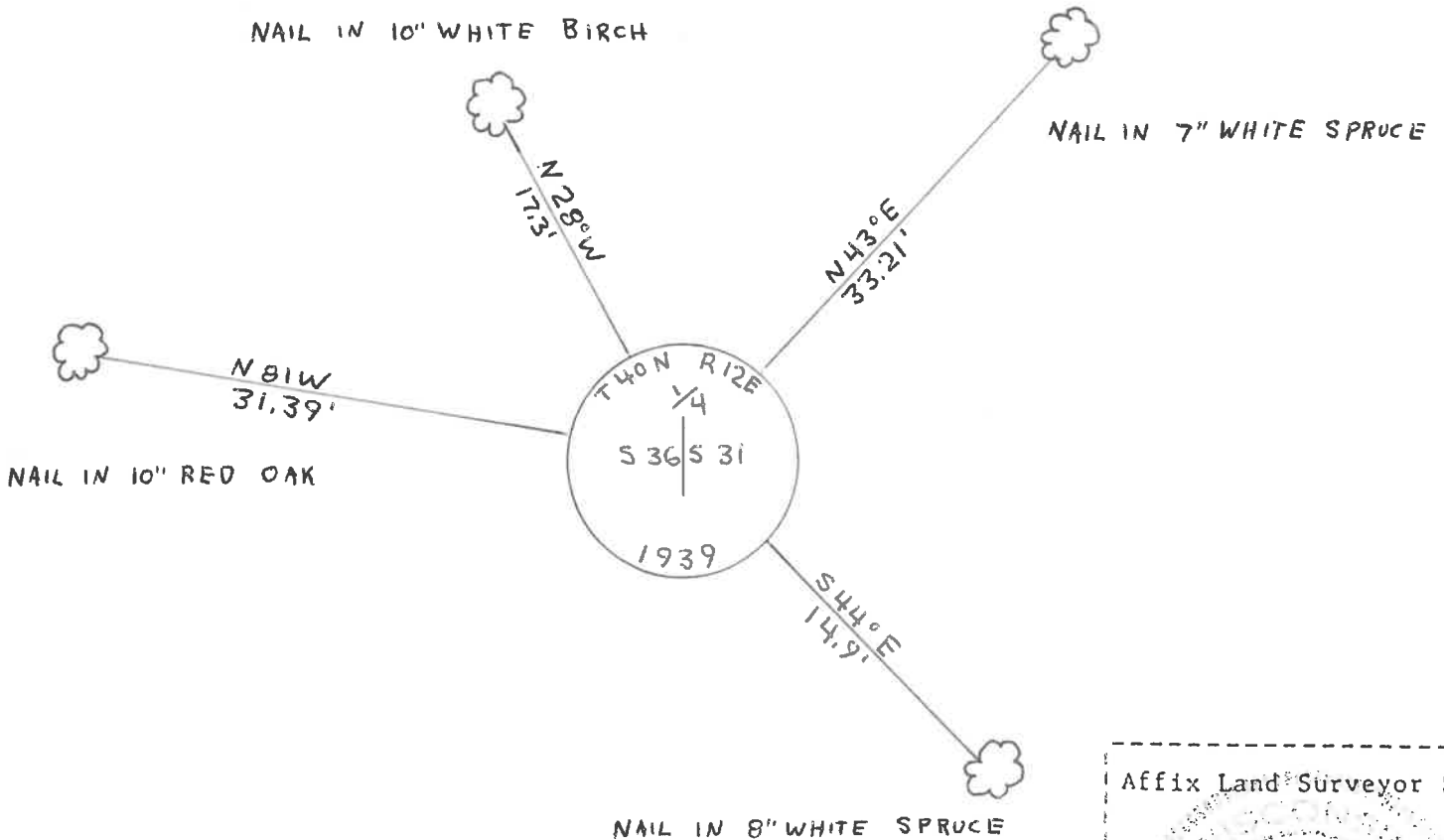
(e) Describe any material discrepancy between the location of the corner as restored or reestablished and the location of that corner as previously restored or reestablished by distance and direction. Show the discrepancy on the plan view drawing under (d), above. Show the distances between the corner as previously restored or reestablished and (1) the corner as restored or reestablished, and (2) to at least 2 of the witness monuments shown on the drawing in (d), above.

See drawing below

(f) Was the corner restored through acceptance of (1) an obliterated evidence location, or, (2) a found perpetuated location?

Found perpetuated location

(g&h) Was the corner reestablished through lost corner proportionate methods? If so, show the method, including the directions and distances to other public land survey corners used as evidence or used for proportioning in determining the corner location?



(i) I, John H. Fisher
 (type or print name) certify that the corner location shown on this record was determined by me or under my direction and control and that this U.S. Public Land Survey Monument Record is correct and complete to the best of my knowledge and belief.

John H. Fisher
 Signature

1/22/85
 Date