

CERTIFIED LAND CORNER RESTORATION

State of Wisconsin }
County of Forest } ss.

I Jean F. Resvick, do hereby certify that on the 30 day of October, 1975, I found evidence of the East Quarter corner of Section 35 Township 39 North, Range 14 East, Fourth Principal Meridian, as described hereon; and that from this evidence I established a new monument and accessories as described hereon to perpetuate the original location of this corner:

Description of original monument and accessories and subsequent restorations:

Surveyed in 1865 by William E. Daugherty
40.00 chains North between Sections 35 and 36, set post
Sugar 12, S13W, 37 lks.
Birch 12, N24E, 38 lks.

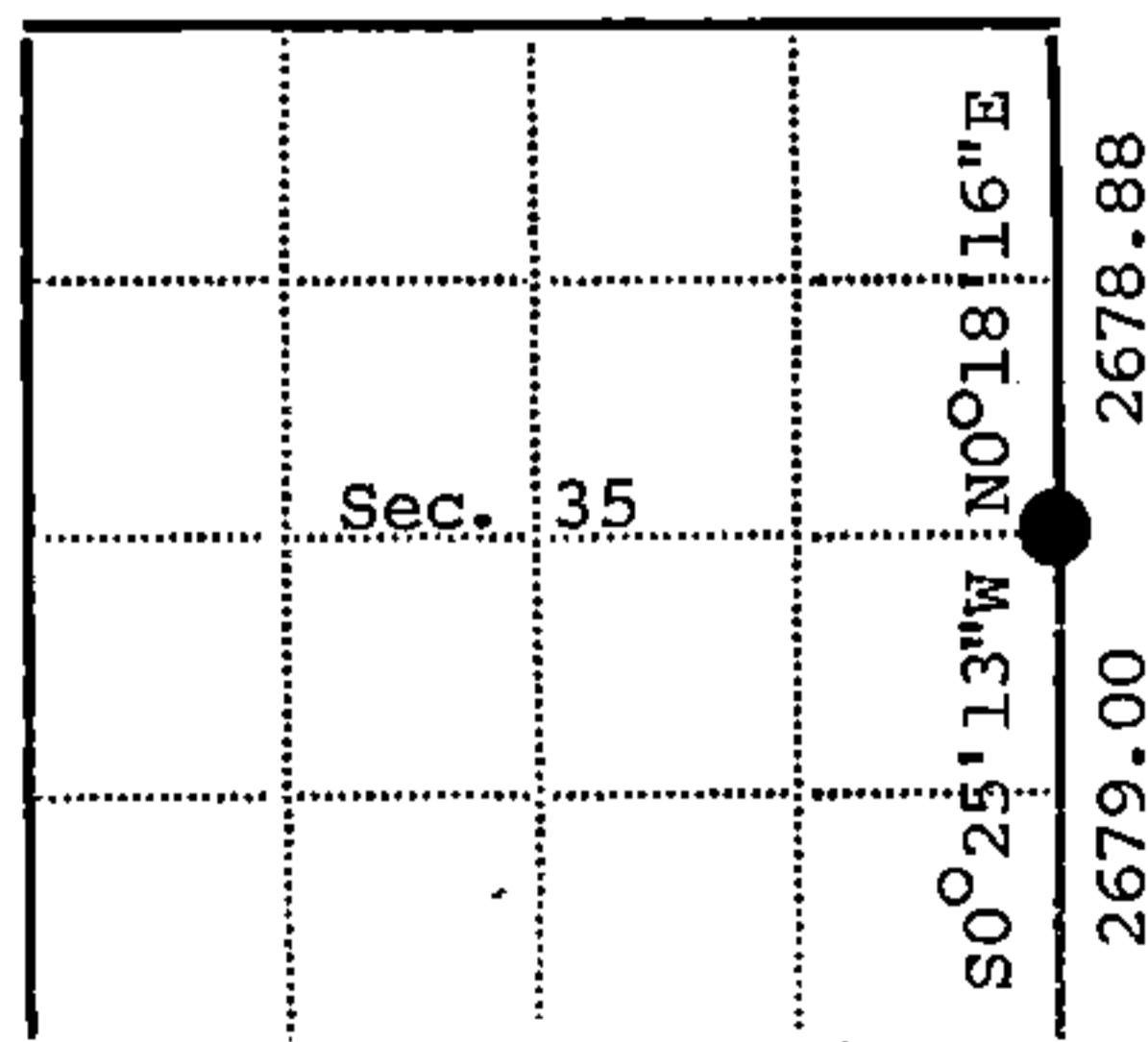
Description of corner evidence found:

Old State Highway 139 runs North and South accepted locally as being on the section line. No evidence was found to locate the latitude of this corner. I established the position for this quarter corner by taking the mid point between the section corners for latitude control and moving in the cardinal direction to the center line of road used for longitude control. The center line of road is then a straight line from the quarter corner South or North to the respective section corners.

Description of monument and accessories I established to perpetuate the location of this corner:

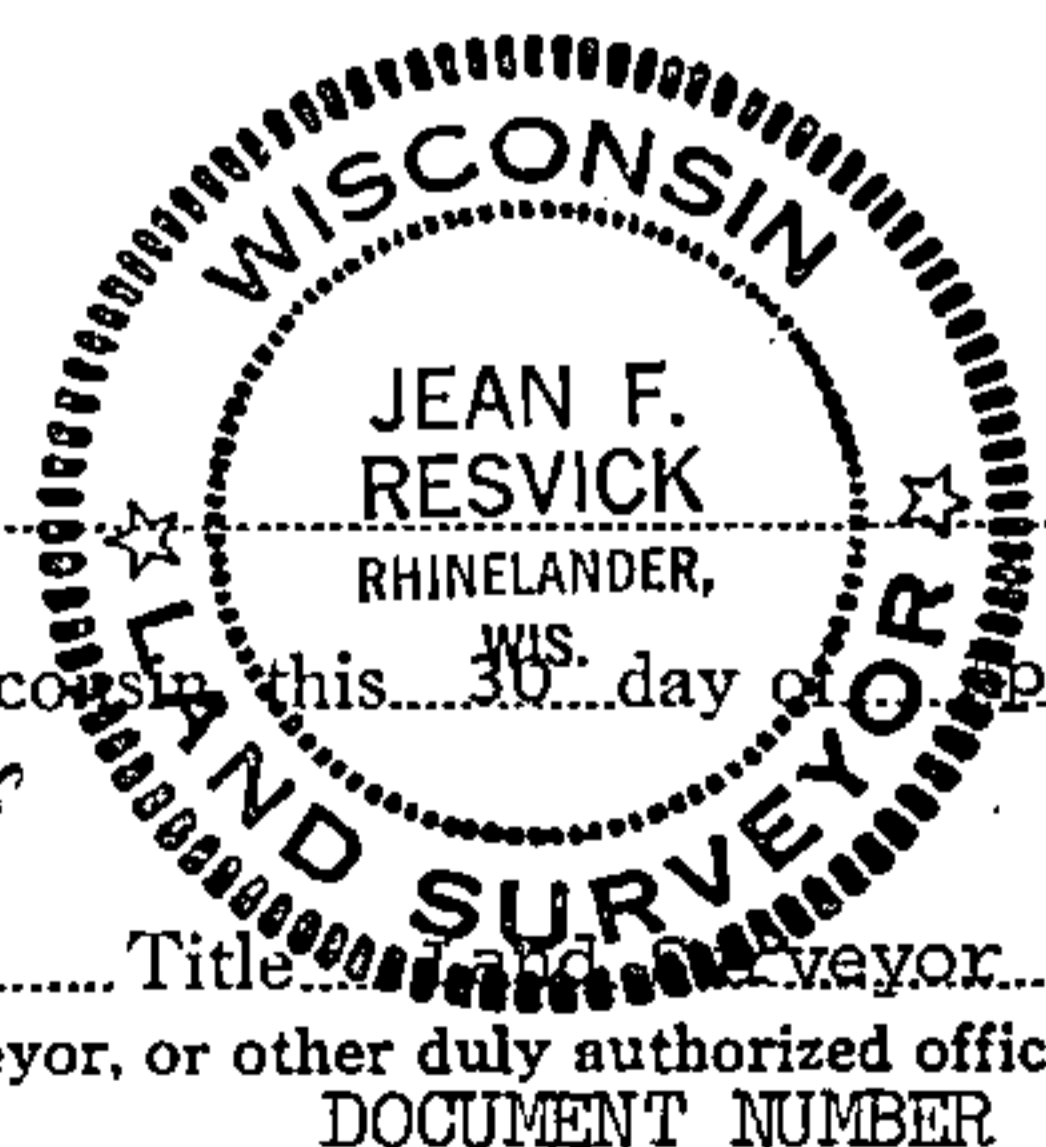
At the corner position established above, I set a 2 inch inside diameter galvanized iron pipe, filled with concrete, 3 feet long, 1.0 foot below the surface of the blacktop road, with a brass cap stamped: T39N, R14E, 1/4, S35, S36, 1975, S-802.
Referenced to the following blazed and scribed new bearing trees.
Red pine 9, N42W, 50.65 feet
Red pine 6, S45W, 101.99 feet
Southeast corner of Section 35 bears S0°25'13"W, 2679.00 feet distance.
Northeast corner of Section 35 bears N0°18'16"E, 2678.88 feet distance.

4391435 2000



- - Corner monument restored
- -

Resident witnesses.....
Dated at Rhinelander, Wisconsin this 30 day of April 1976.
Signature *Jean F. Resvick* Title Land Surveyor
(County Surveyor, Registered Land Surveyor, or other duly authorized official)
Surveyors Registration No. S-802



DOCUMENT NUMBER 109611

Office of Register of Deeds County of Forest
I hereby certify that the within instrument was filed in this office for record on the 2nd day of July 1976, and was filed in Book No. Page No. of County Records.

Signature *Eugene Staszny* Title Register of Deeds

Township 39 North, Range 14 East, Section 35, Index No. X-21, Page No.

X21

U.S. PUBLIC LAND SURVEY MONUMENT RECORD

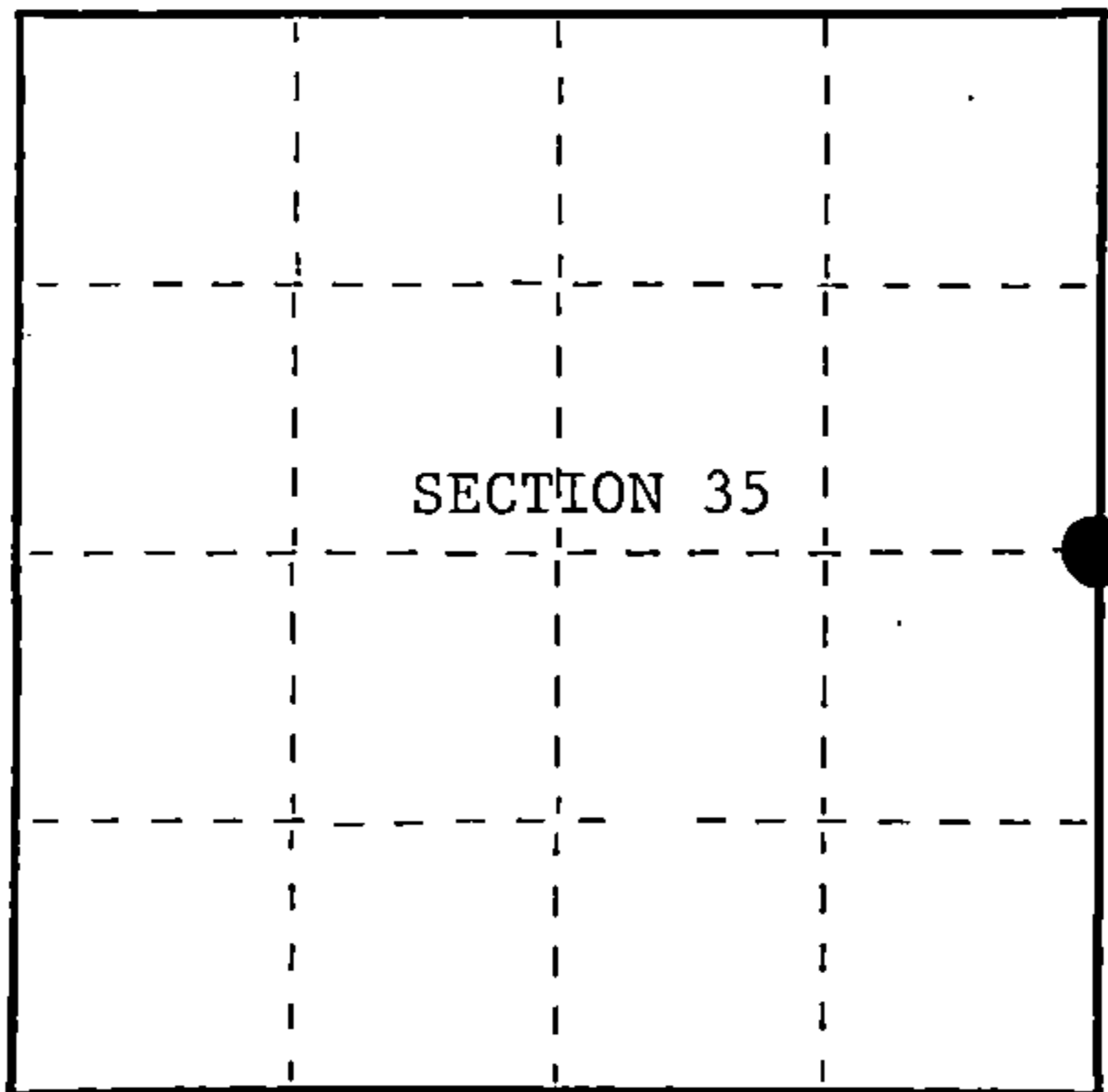
Index No. X-21

State of Wisconsin }
County of Forest } ss.

I, William B. Cochrane, do hereby certify that on the 17th day of September, 1985 I found evidence of the East Quarter corner of Section 35 Township 39 North, Range 14 East, Fourth Principal Meridian, as described hereon; and that from this evidence I established a new monument and accessories as described hereon to perpetuate the original location of this corner.

Resident witnesses:

State Plane Co-ordinates
N- 239,943.6390
E-2,332,473.1150



○ = Corner monument restored.

History of original corner establishment:
Original Government Survey in 1865 by William E. Daugherty and Alex McDill.

Corner position was restored on October 30th, 1985, by Jean Resvick, a Registered Land Surveyor with the U.S. Forest Service. See Certified Land Corner Restoration Certificate filed in the Registrar of Deeds Office in the Forest County Courthouse.

Description of corner evidence found:
Found monument as described and in place, from which the following bears;

R. Pine 8" S45°W 101.99 feet

Note; The NW BT was removed for road construction.

Description of monument and accessories I established to perpetuate the original location of this corner.

Blazed and scribed the following new bearing tree;

R. Pine 14" N12°W 82.45 feet

Dated at Hiles, Wis., this 14th day of February, 1989

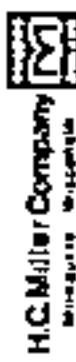
Signature: William B. Cochrane, Title: Land Surveyor, Registration No. S-1107
(County Surveyor, Registered Land Surveyor, or other duly authorized official)

Office of Register of Deeds, County of Forest, I hereby certify that the within instrument was filed in this office for record on the 12th day of April, 1989 at 9:10 o'clock A.M.

Paul Aschenbrenner
(Register of Deeds)

By.....Deputy

FORM NO. 985-A



Stock No. 26273

DOCUMENT NUMBER

137191

43914352000

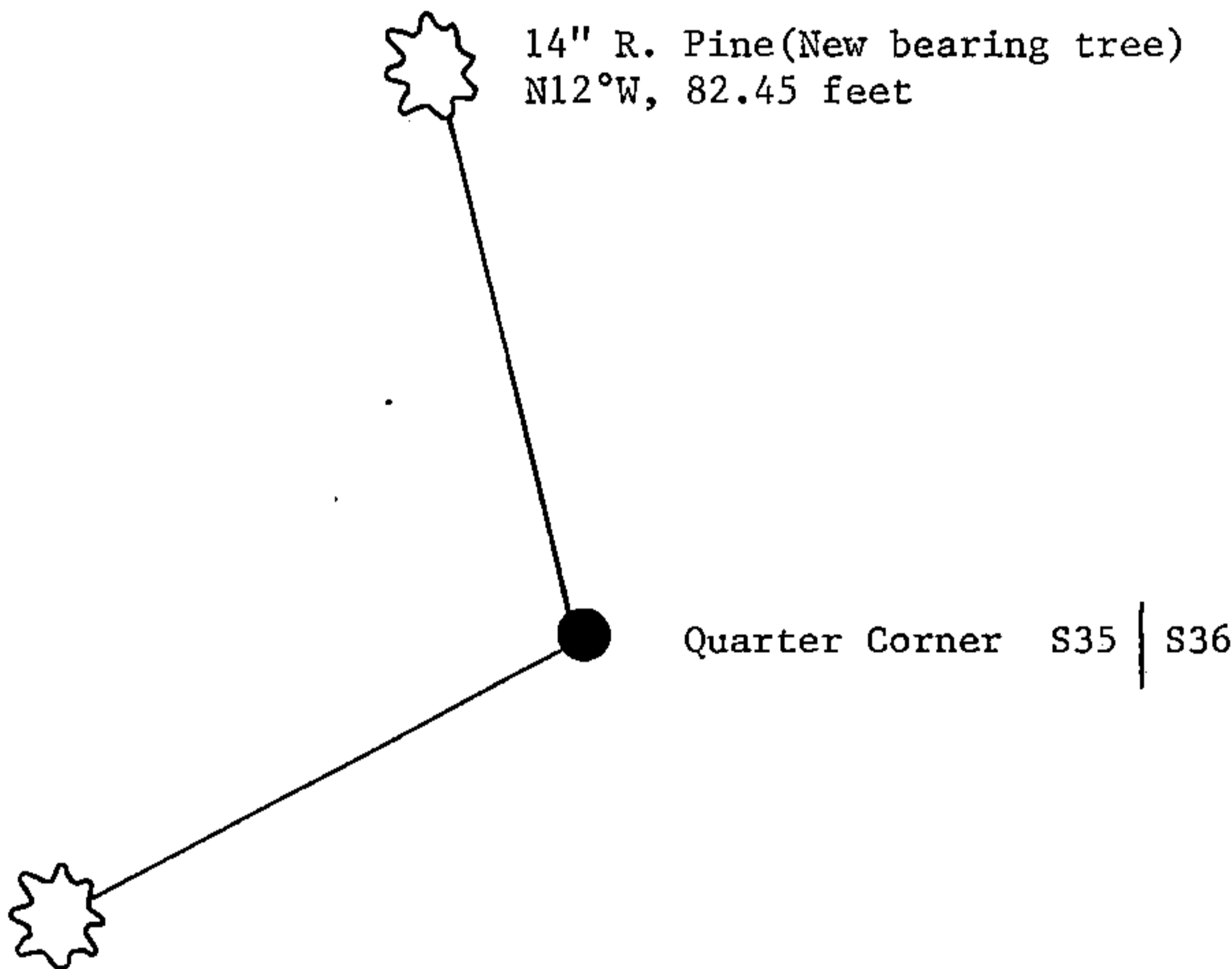
(e) Describe any material discrepancy between the location of the corner as restored or reestablished and the location of that corner as previously restored or reestablished by distance and direction. Show the discrepancy on the plan view drawing under (d), above. Show the distances between the corner as previously restored or reestablished and (1) the corner as restored or reestablished, and (2) to at least 2 of the witness monuments shown on the drawing in (d), above.

See drawing below.

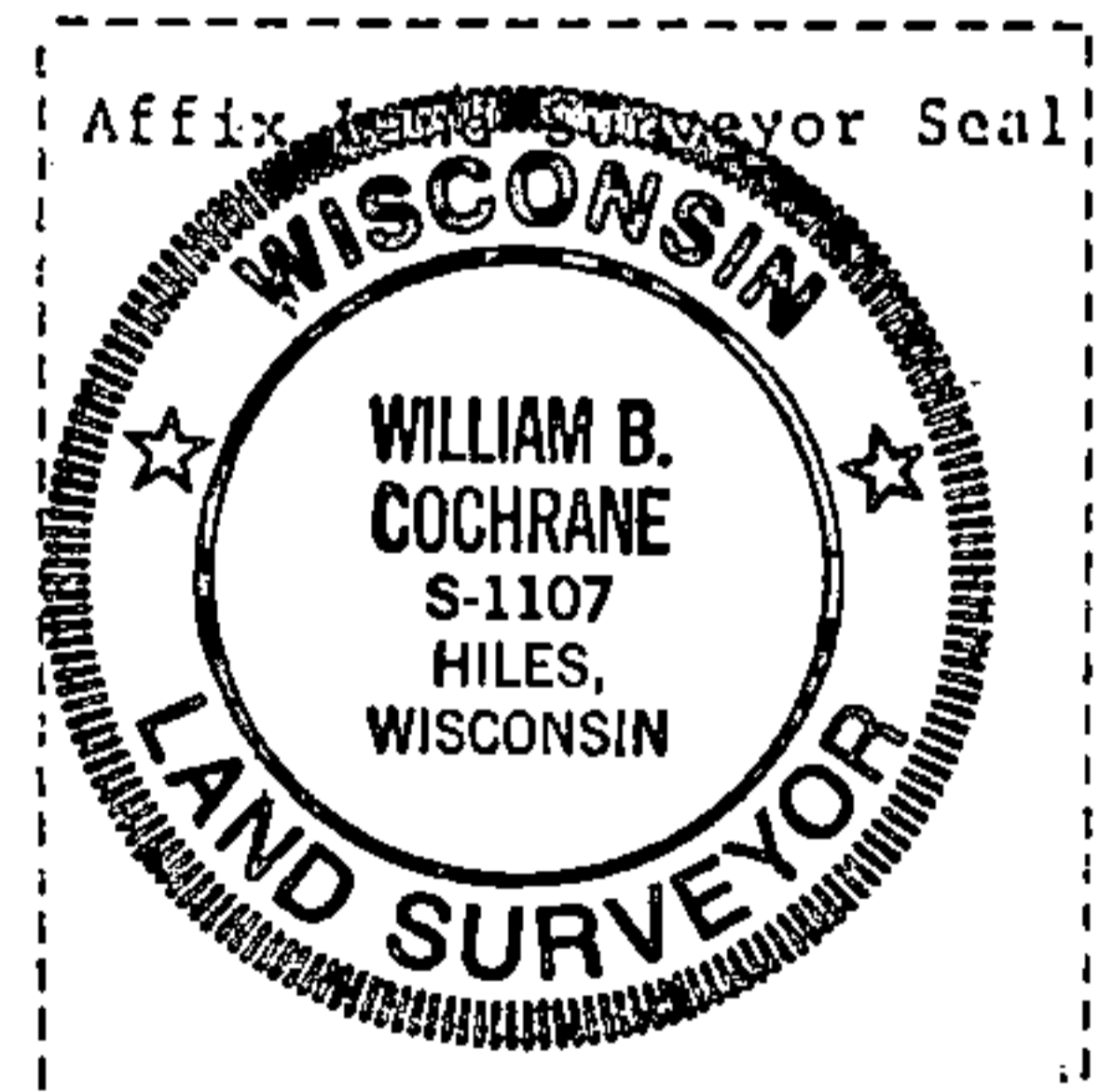
(f) Was the corner restored through acceptance of (1) an obliterated evidence location, or, (2) a found perpetuated location?

Restored through acceptance of a found perpetuated location.

(g&h) Was the corner reestablished through lost corner proportionate methods? If so, show the method, including the directions and distances to other public land survey corners used as evidence or used for proportioning in determining the corner location?



8" R. Pine
S45°W, 101.99 feet



(i) I, William B. Cochrane
(type or print name) certify that the corner location shown on this record was determined by me or under my direction and control and that this U.S. Public Land Survey Monument Record is correct and complete to the best of my knowledge and belief.

William B. Cochrane February 14, 1989
Signature Date

Survey requested by; [Signature]
District Ranger Date