

U.S. PUBLIC LAND SURVEY MONUMENT RECORD

Index No. Z-17

State of Wisconsin }
 County of Forest } ss.

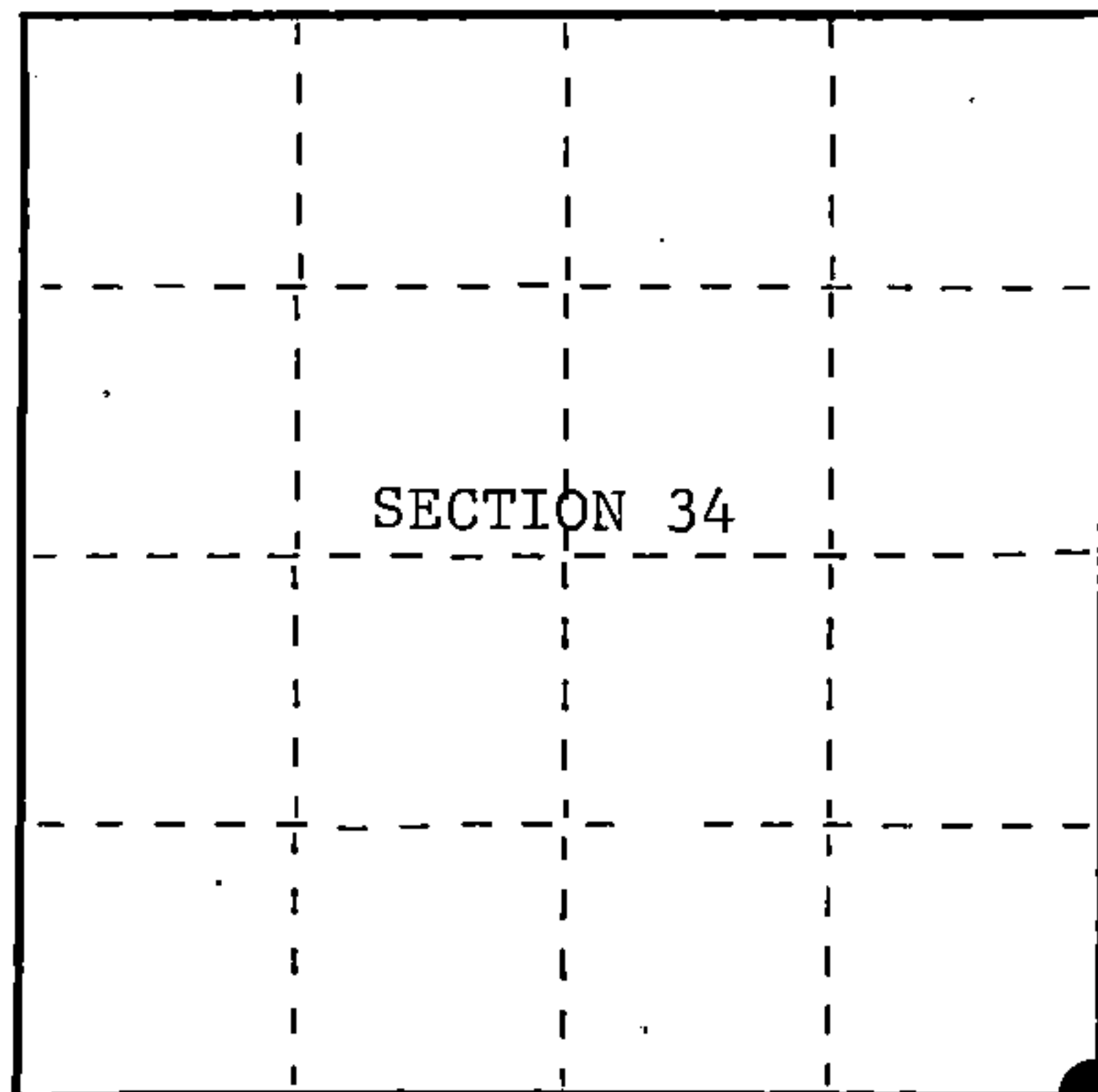
I William B. Cochrane, do hereby certify that on the 28th day of August, 1986, I found evidence of the Southeast Section corner of Section 34 Township 39, North, Range 14 East, Fourth Principal Meridian, as described hereon; and that from this evidence I established a new monument and accessories as described hereon to perpetuate the original location of this corner.

Resident witnesses:

David Brownell

Tony Tillman

State Plane Co-ordinates
 N- 237,168.1307
 E-2,327,240.2630



○ = Corner monument restored.

History of original corner establishment:

Original Government Survey in 1858 by Artemas Curtis. West on the South side of Section 35, at 80 chains, set Section Corner Post to Sections 34, 35, 2, and 3, from which the following bear;

Hemlock	30"	N10°W	2 lks.
Hemlock	9"	N17°E	78 lks.
Sugar	12"	S65°E	40 lks.
Lynn	10"	S65°W	24 lks.

Description of corner evidence found:

No corner evidence was recovered.

The corner position is re-established at proportionate distance and on line between the South 1/4 of Section 34 and the South 1/4 of Section 35.

Description of monument and accessories I established to perpetuate the original location of this corner.

At the corner position, set a 2½ inch diameter aluminum pipe monument, 3 feet long, 3½ feet in the ground (6" below road surface), with an aluminum cap stamped; T39N, R14E, S34, S35, S2, S3, T38N, 1986, S-1107. From which the following new blazed and scribed bearing trees bear;

Maple	9"	N51°E	16.57 feet
Maple	5"	S 3°E	32.56 feet
Maple	14"	S84°W	46.98 feet
Maple	16"	N17°W	40.24 feet
Steel Sign Post		South	10.50 feet

Dated at Hiles, Wis., this 3rd day of February, 1987

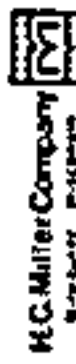
Signature William B. Cochrane Title Land Surveyor Registration No. S-1107
 (County Surveyor, Registered Land Surveyor, or other duly authorized official)

Office of Register of Deeds, County of Forest, I hereby certify that the within instrument was filed in this office for record on the 11th day of March, 1987 at 3:30 o'clock P. M.

Paul Aschenbrenner
 (Register of Deeds)

By _____ Deputy

FORM NO. 985-A



Stock No. 26273

DOCUMENT NUMBER 132408

A 3914.340000

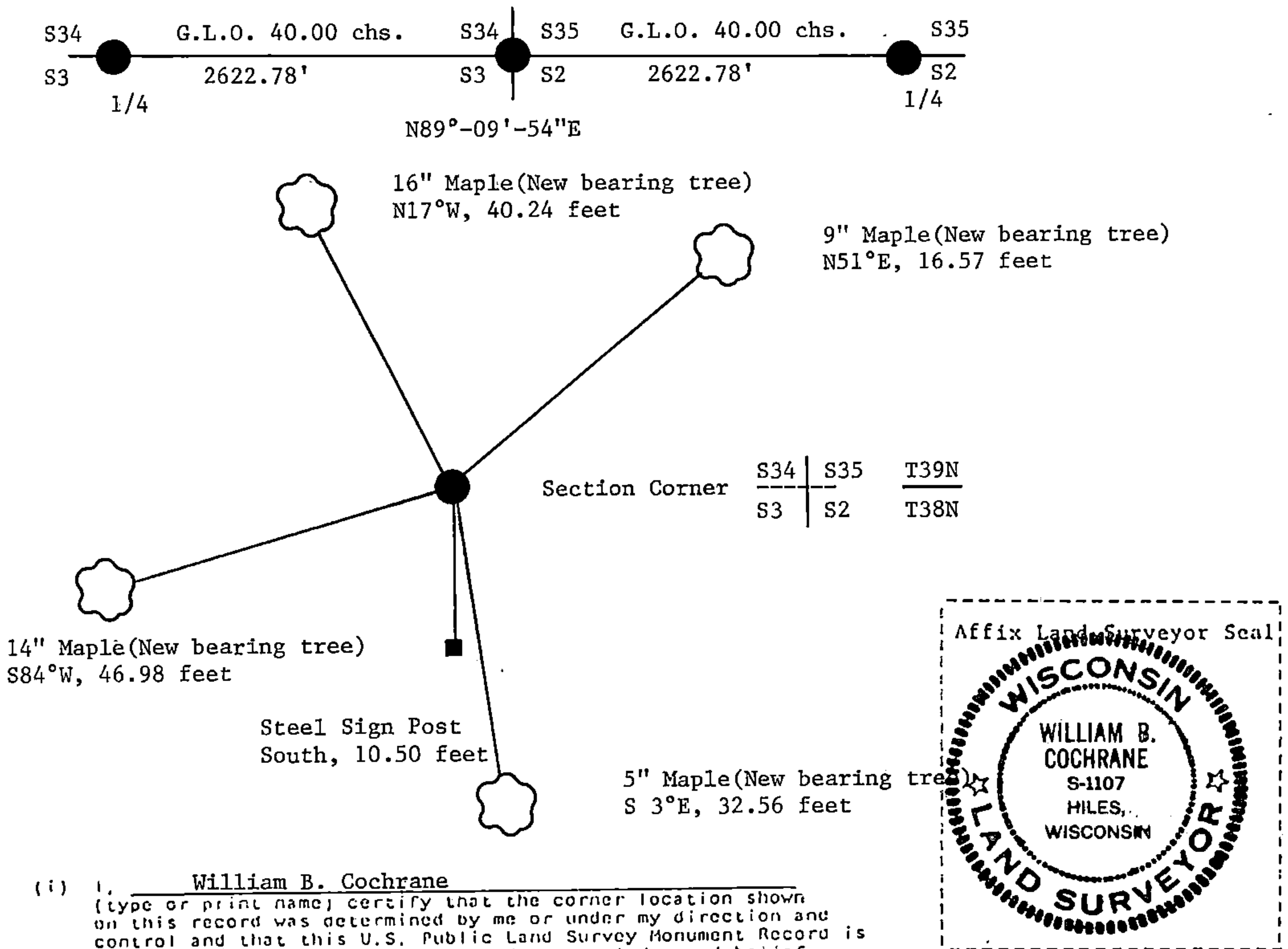
(e) Describe any material discrepancy between the location of the corner as restored or reestablished and the location of that corner as previously restored or reestablished by distance and direction. Show the discrepancy on the plan view drawing under (d), above. Show the distances between the corner as previously restored or reestablished and (1) the corner as restored or reestablished, and (2) to at least 2 of the witness monuments shown on the drawing in (d), above.

See drawing below.

(f) Was the corner restored through acceptance of (1) an obliterated evidence location, or, (2) a found perpetuated location?

This corner was re-established using State Plane Co-ordinates computed from Aerial Photography and a Global Positioning Satellite Survey. The computed corner position was located in the field using a North Seeking Gyro, an Electronic Distance Meter, and/or a steel tape.

(g&h) Was the corner reestablished through lost corner proportionate methods? If so, show the method, including the directions and distances to other public land survey corners used as evidence or used for proportioning in determining the corner location?
See Above.



(i) I, William B. Cochrane
(type or print name) certify that the corner location shown on this record was determined by me or under my direction and control and that this U.S. Public Land Survey Monument Record is correct and complete to the best of my knowledge and belief.

William B. Cochrane February 3, 1987
Signature Date

Survey requested by: [Signature] 3-9-87
District Ranger Date

U.S. PUBLIC LAND SURVEY MONUMENT RECORD

Index No.: A-17.....

State of Wisconsin }
 County of Forest } ss.

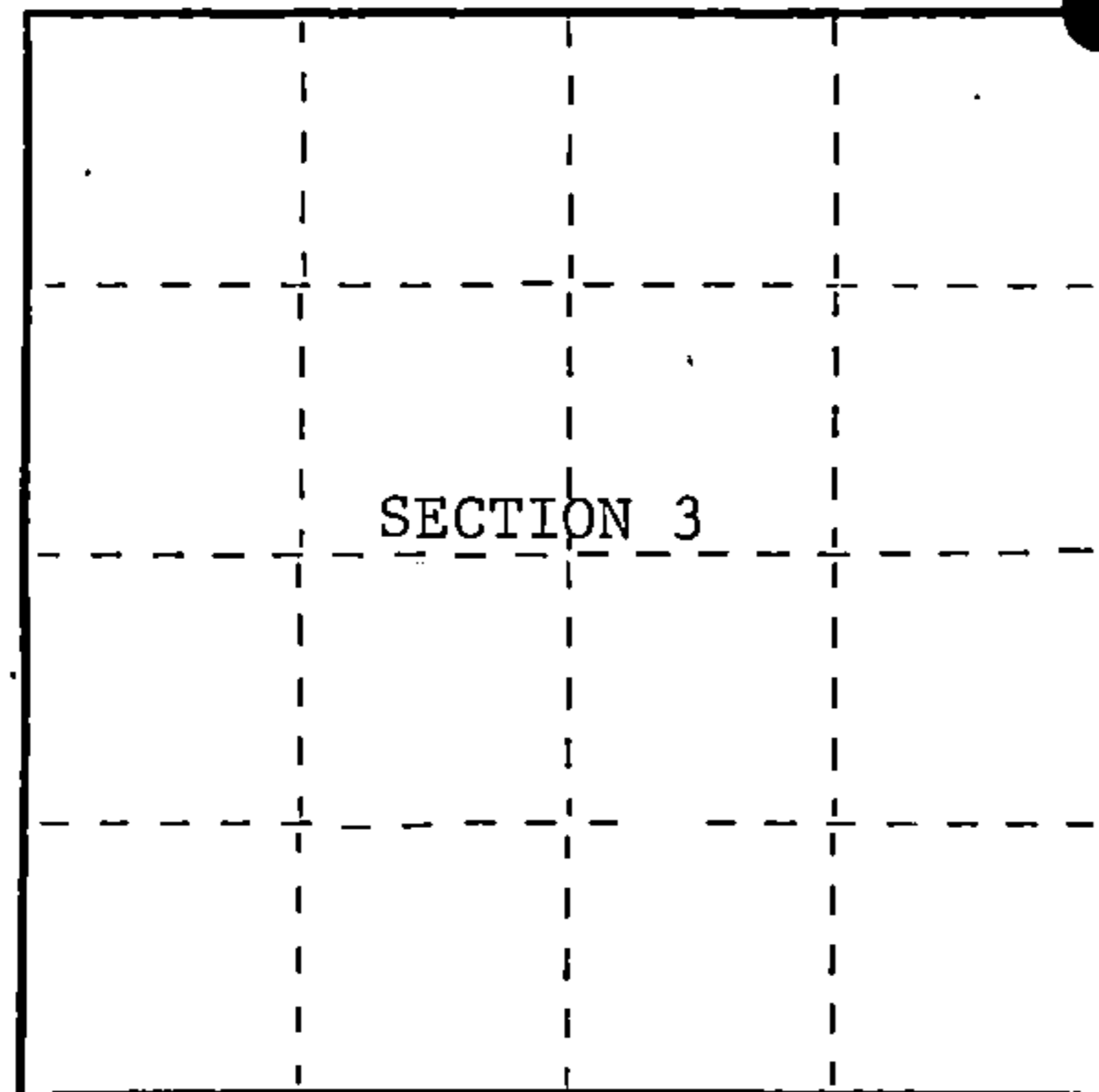
I, William B. Cochrane, do hereby certify that on the 28th day of August, 1986, I found evidence of the Northeast Section corner of Section 3 Township 38, North, Range 14 East, Fourth Principal Meridian, as described hereon; and that from this evidence I established a new monument and accessories as described hereon to perpetuate the original location of this corner.

Resident witnesses:

David Brownell

Tony Tillman

State Plane Co-ordinates
 N- 237,168.1307
 E-2,327,240.2630



○ = Corner monument restored.

History of original corner establishment:

Original Government Survey in 1858 by Artemas Curtis. West on the North Side of Section 2, at 80 chains, set Section Corner Post to Sections 2, 3, 34, and 35, from which the following bear;

Hemlock	30"	N10°W	2 lks.
Hemlock	9"	N17°E	78 lks.
Sugar	12"	S65°E	40 lks.
Lynn	10"	S65°W	24 lks.

Description of corner evidence found:

No corner evidence was recovered.

The corner position is re-established at proportionate distance and on line between the North 1/4 of Section 3, and the North 1/4 of Section 2.

Description of monument and accessories I established to perpetuate the original location of this corner.

At the corner position, set a 2½ inch diameter aluminum pipe monument, 3 feet long, 3½ feet in the ground (6" below road surface), with a aluminum cap stamped; T39N, S2, S3, S34, S35, T38N, 1986, S-1107. From which the following new blazed and scribed bearing trees bear;

Maple	9"	N51°E	16.57 feet
Maple	5"	S 3°E	32.56 feet
Maple	14"	S84°W	46.98 feet
Maple	16"	N17°W	40.24 feet
Steel Sign Post		South	10.50 feet

Dated at Hiles, Wis., this 3rd day of February, 1987

Signature William B. Cochrane Title Land Surveyor Registration No. S-1107
 (County Surveyor, Registered Land Surveyor, or other duly authorized official)

Office of Register of Deeds, County of Forest, I hereby certify that the within instrument was filed in this office for record on the 11th day of March, 1987 at 3:30 o'clock P. M.

Paul Achenbrenner
 (Register of Deeds)

By.....Deputy

FORM NO. 985-A

H.C. Miller Company
 MILWAUKEE, WISCONSIN

Stock No. 26273

DOCUMENT NUMBER 132294

4391434000

(e) Describe any material discrepancy between the location of the corner as restored or reestablished and the location of that corner as previously restored or reestablished by distance and direction. Show the discrepancy on the plan view drawing under (d), above. Show the distances between the corner as previously restored or reestablished and (1) the corner as restored or reestablished, and (2) to at least 2 of the witness monuments shown on the drawing in (d), above.

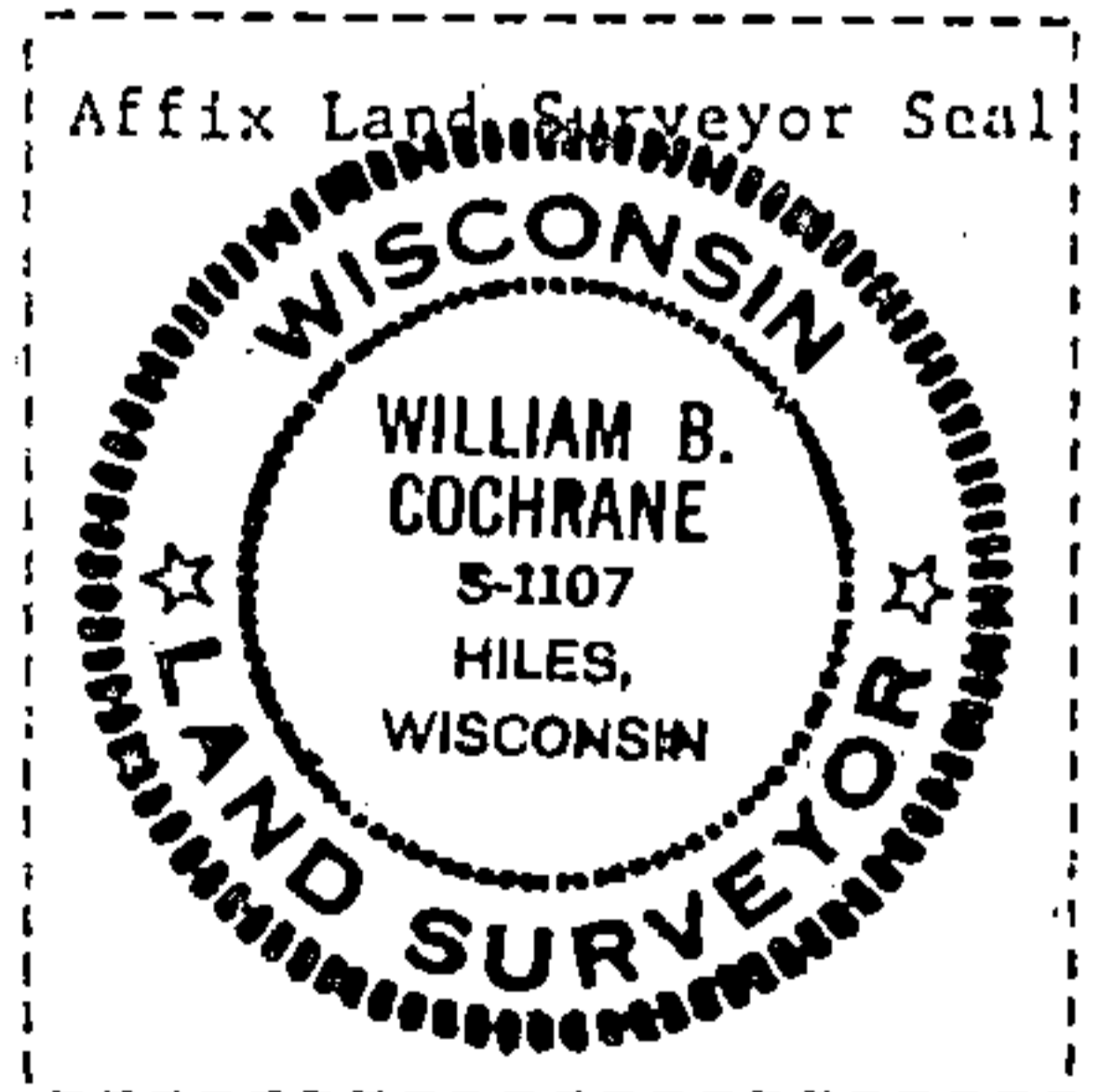
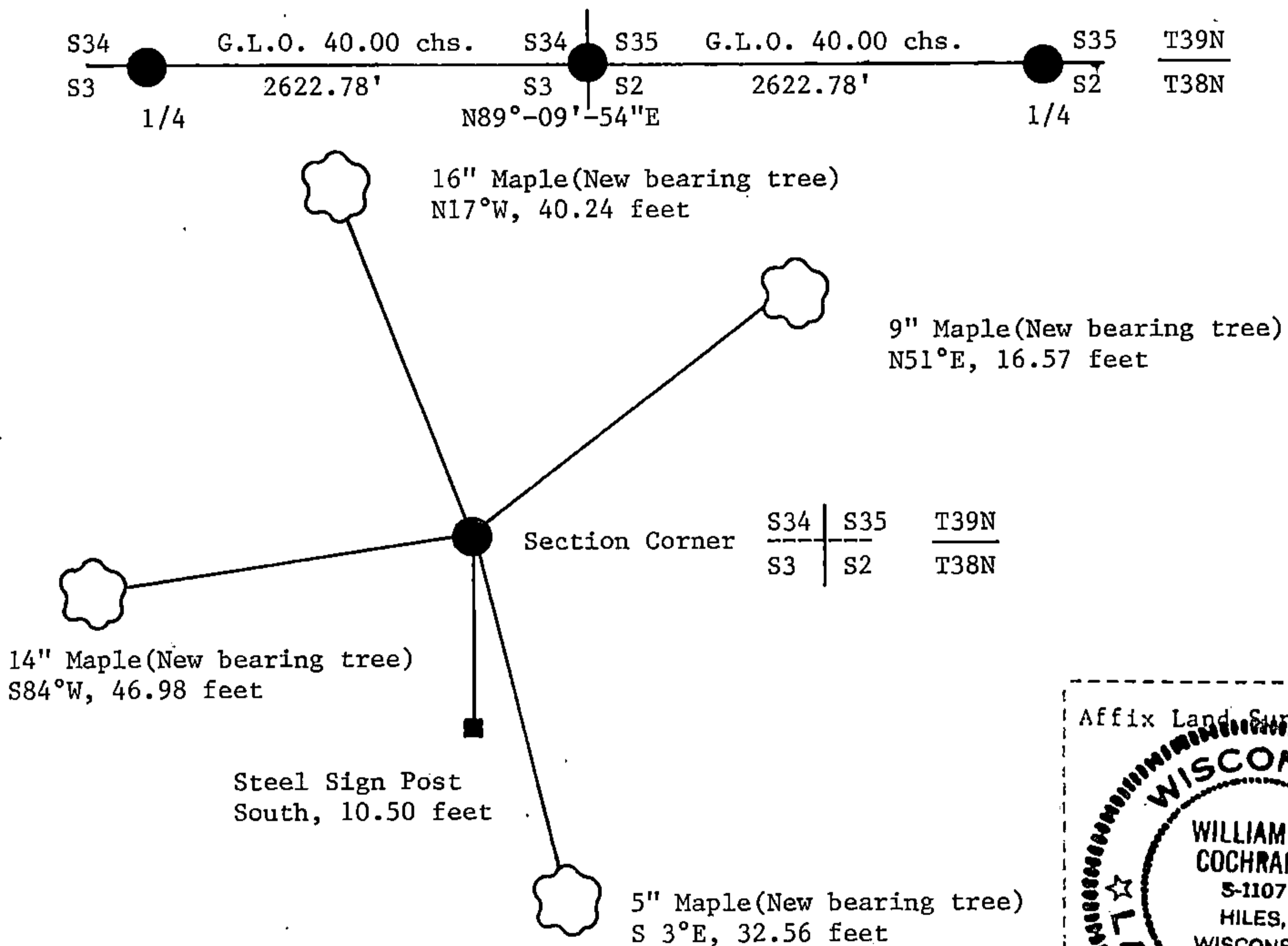
See drawing below.

(f) Was the corner restored through acceptance of (1) an obliterated evidence location, or, (2) a found perpetuated location?

This corner was re-established using State Plane Co-ordinates computed from Aerial Photography and a Global Positioning Satellite Survey. The computed corner position was located in the field using a North Seeking Gyro, an Electronic Distance Meter, and/or a steel tape.

(g&h) Was the corner reestablished through lost corner proportionate methods? If so, show the method, including the directions and distances to other public land survey corners used as evidence or used for proportioning in determining the corner location?

See above.



(i) I, William B. Cochrane
 (type or print name) certify that the corner location shown on this record was determined by me or under my direction and control and that this U.S. Public Land Survey Monument Record is correct and complete to the best of my knowledge and belief.

William B. Cochrane February 3, 1987
 Signature Date

Survey requested by: [Signature] 3-9-87
 District Ranger Date