

U.S. PUBLIC LAND SURVEY MONUMENT RECORD

Index No. V-9

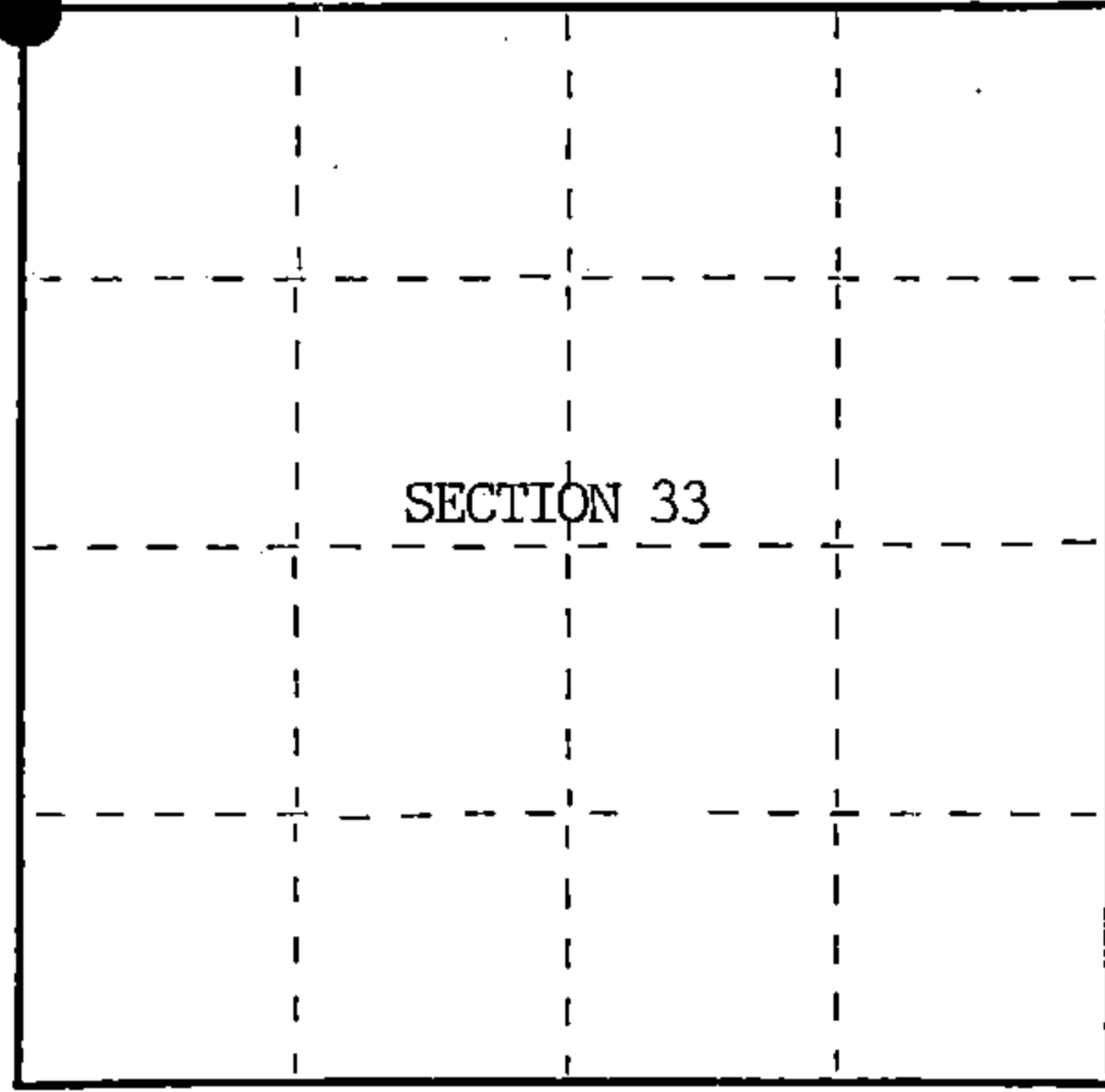
State of Wisconsin }
 County of Forest } ss.

I William B. Cochrane, do hereby certify that on the 23rd day of July, 1985, I found evidence of the Northwest Section corner of Section 33 Township 39, North, Range 14 East, Fourth Principal Meridian, as described hereon; and that from this evidence I established a new monument and accessories as described hereon to perpetuate the original location of this corner.

Resident witnesses:

David Brownell

State Plane Co-ordinates
 N- 242,365.6880
 E-2,316,617.9170



○ = Corner monument restored.

History of original corner establishment:

Original Government Survey in 1865 by William E. Daugherty and Alex McDill. North between Sections 32 and 33, 80.00 chains, set Section Corner Post to Sections 28, 29, 32 and 33, from which the following bear;

Sugar	12"	S44°W	12 lks.
Birch	15"	S85°E	28 lks.

Description of corner evidence found:

Found 6"x6" Cedar Post, 1 foot above the ground.

I accept the Cedar Post as the best available evidence for restoring the corner position.

No original corner evidence was recovered.

Description of monument and accessories I established to perpetuate the original location of this corner.

In place of Cedar Post, set a 2½" diameter aluminum pipe monument, 3 feet long, 2½ feet in the ground, with an aluminum cap stamped; T39N, R14E, S28, S29, S32, S33, 1985, S-1107. From which the following new blazed and scribed bearing trees bear;

Maple	7"	N46°E	80.45 feet
Maple	14"	S20°E	78.73 feet
Maple	11"	S50°W	119.10 feet
Maple	7"	N16°W	108.09 feet
Steel Sign Post		SW	4.00 feet

Dated at Hiles, Wis., this 27th day of January, 1986

Signature William B. Cochrane Title Land Surveyor Registration No. S-1107
 (County Surveyor, Registered Land Surveyor, or other duly authorized official)

Office of Register of Deeds, County of Forest, I hereby certify that the within instrument was filed in this office for record on the 11th day of March, 1987 at 3:30 o'clock P. M.

Paul Aschenbrenner
 (Register of Deeds)

By.....Deputy

FORM NO. 985-A
 H.C. Miller Company
 MILWAUKEE, WISCONSIN

Stock No. 26273

DOCUMENT NUMBER 132390

43914290000

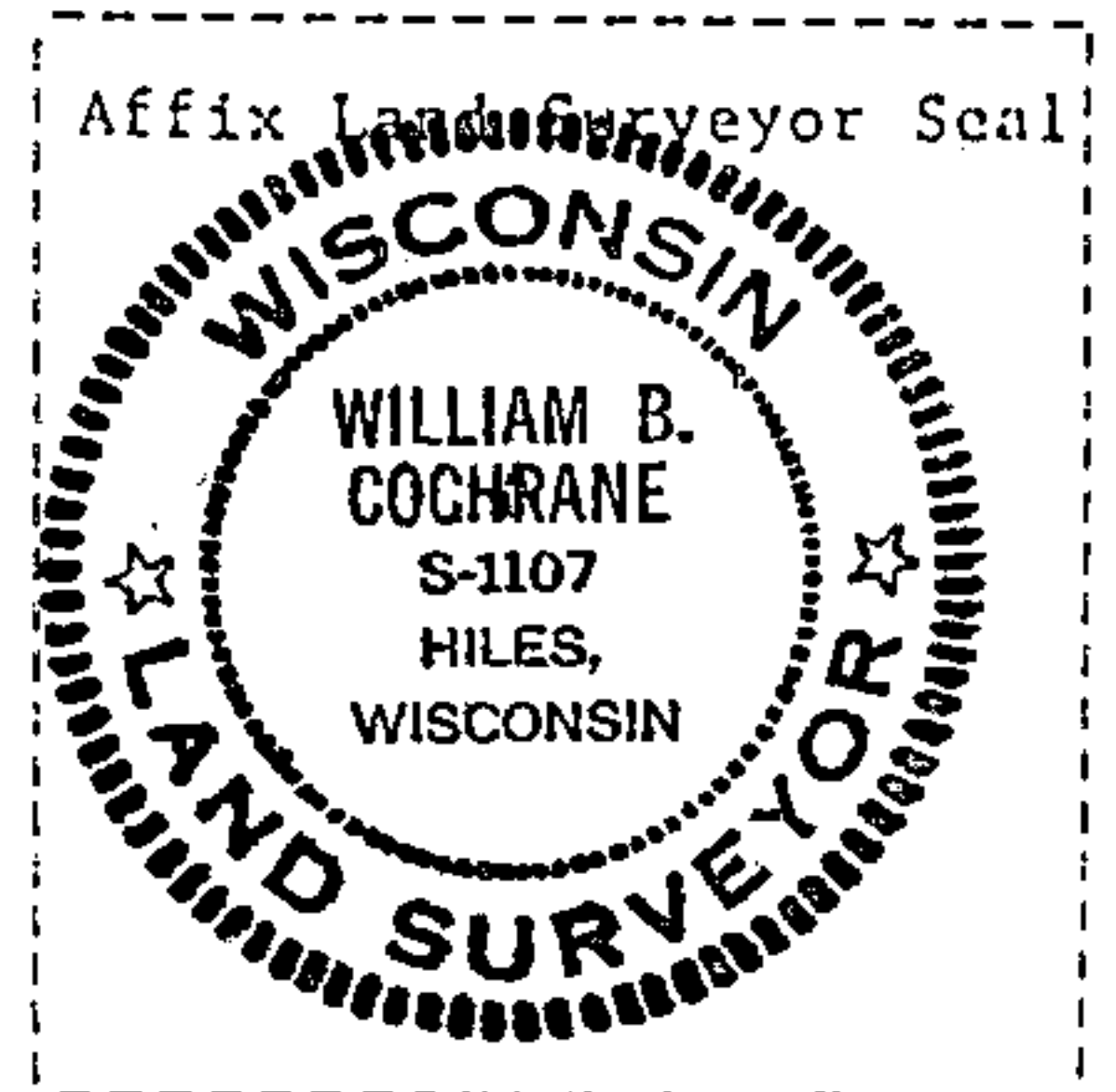
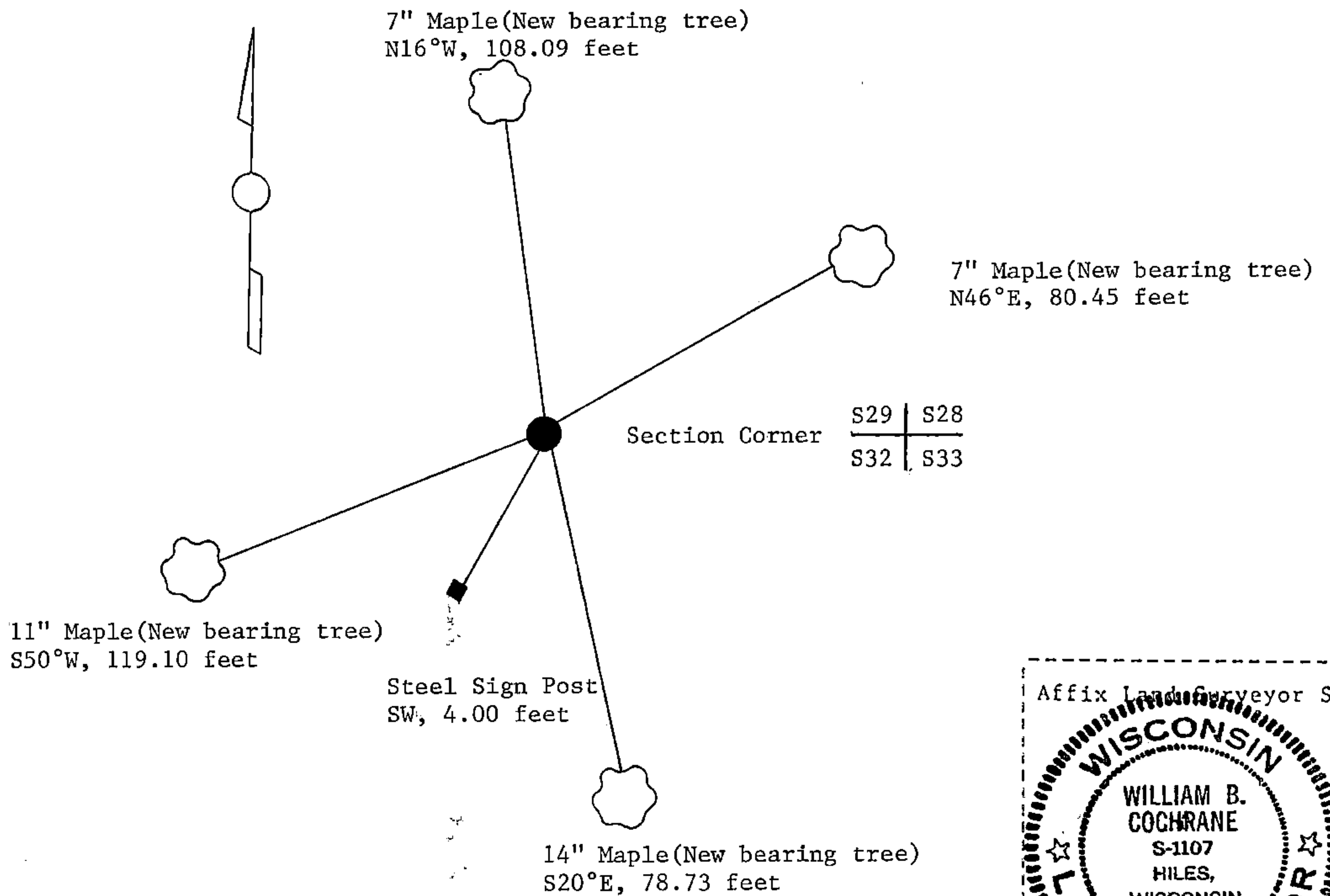
(e) Describe any material discrepancy between the location of the corner as restored or reestablished and the location of that corner as previously restored or reestablished by distance and direction. Show the discrepancy on the plan view drawing under (d), above. Show the distances between the corner as previously restored or reestablished and (1) the corner as restored or reestablished, and (2) to at least 2 of the witness monuments shown on the drawing in (d), above.

See drawing below.

(f) Was the corner restored through acceptance of (1) an obliterated evidence location, or, (2) a found perpetuated location?

Restored from accepted evidence.

(g&h) Was the corner reestablished through lost corner proportionate methods? If so, show the method, including the directions and distances to other public land survey corners used as evidence or used for proportioning in determining the corner location?



(i) I, William B. Cochrane
(type or print name) certify that the corner location shown on this record was determined by me or under my direction and control and that this U.S. Public Land Survey Monument Record is correct and complete to the best of my knowledge and belief.

William B. Cochrane October 7, 1986
Signature Date

Survey requested by: Edward [Signature] 3-9-87
District Ranger Date

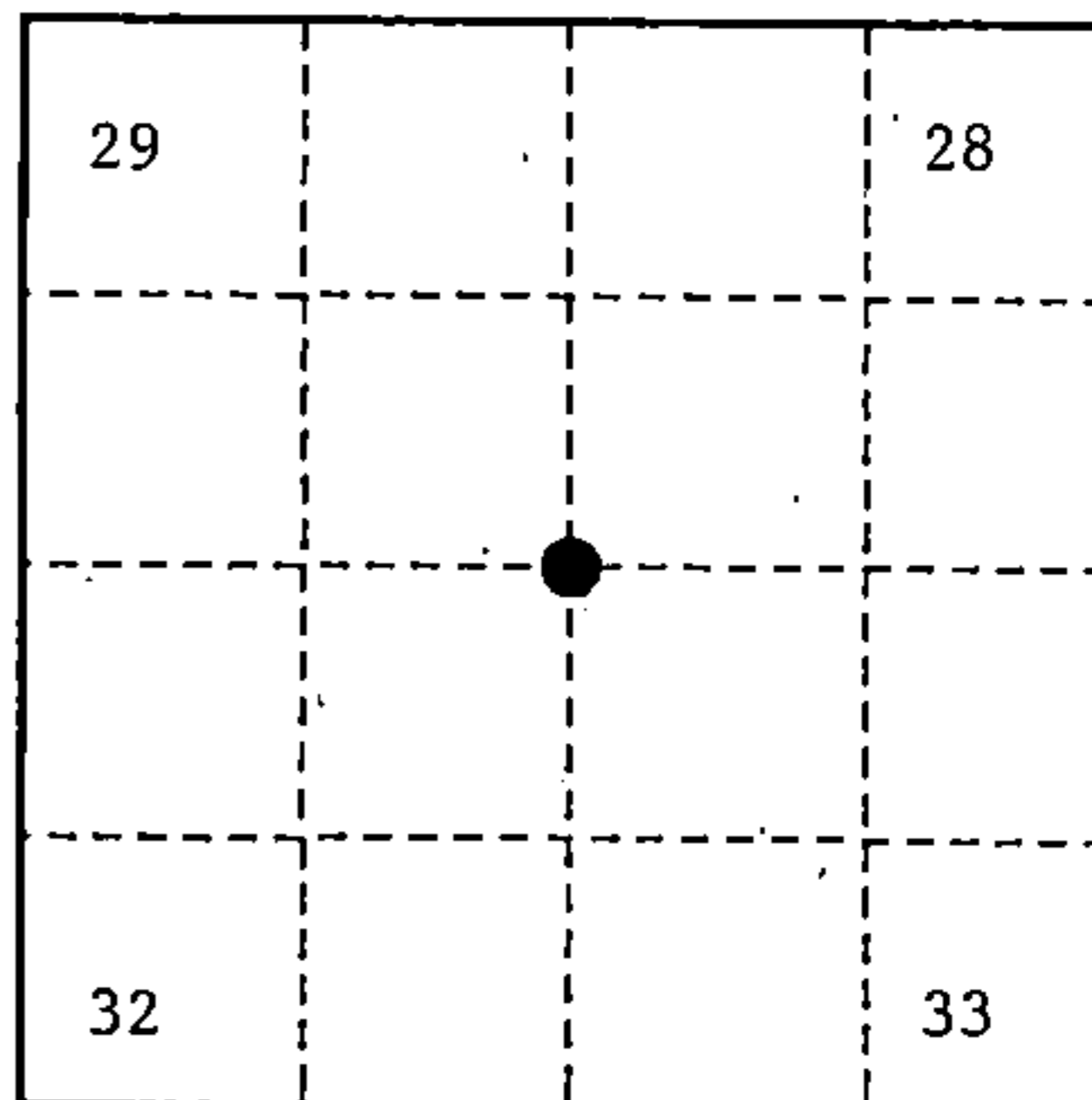
U. S. PUBLIC LAND SURVEY MONUMENT RECORD

INSTRUCTIONS:

This record shall show the location of the corner and shall include all of the following nine elements (a through i).

- (a) Identify the corner by reference to the U.S. public land survey system.
- = Corner monument restored.

Section Corner to Sections 28, 29, 32 and 33, T39N, R14E, Forest County, Wisconsin



- (b) Describe any record evidence, monument evidence, occupational evidence, testimonial evidence or any other material evidence you considered, and whether the monument was found or placed.

Original Government Survey in 1865 by William E. Daugherty and Alex McDill.

In 1985, William B. Cochrane, Land Surveyor with the Forest Service, found a 6"x6" squared Cedar post 1 foot above ground. In place of post, set a 2½ inch diameter aluminum pipe monument, 3 feet long, 2½ feet in the ground, with an aluminum cap stamped; T39N, R14E, S28, S29, S32, S33, 1985, S-1107. Blazed and scribed the following;

Maple	7"	N46°E	80.45 feet
Maple	14"	S20°E	78.73 feet
Maple	11"	S50°W	119.10 feet
Maple	7"	N16°W	108.09 feet
Steel Sign Post		Southwest	4.00 feet

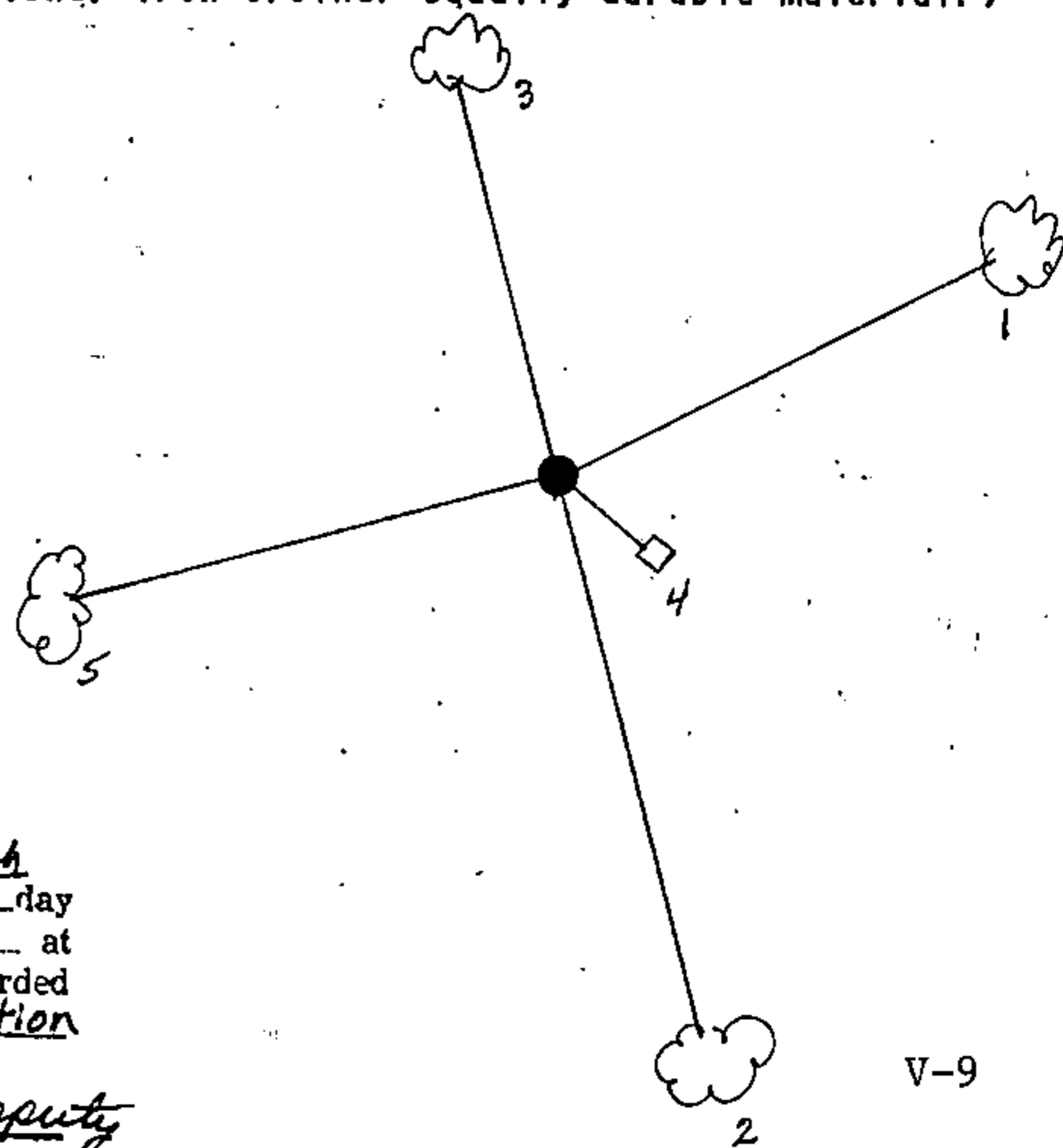
On 9-28-99, Gary L. Pisoni, RLS, found the monument as described above, found the bearing trees as described below, and made a new bearing tree as described below.

See previously recorded Land Corner Certificate, Document # 132390.

- (c) In the plan view drawing below, provide reference ties to at least 4 witness monuments, or, if the location is within a municipality, to at least 2 witness monuments. (witness monuments shall be made of concrete, natural stone, iron or other equally durable material.)

- (d) Show a plan view drawing depicting the relevant monuments and reference ties which is sufficient in detail to enable accurate relocation of the corner monument if the corner monument is disturbed. Indicate north.

1. Maple, 11", N46°E, 80.45 feet
2. Maple, 20", S20°E, 78.73 feet
3. Maple, 11", N16°W, 108.09 feet
4. Steel Sign Post, Southeast, 4.00 feet
5. Maple, 5", S55°W, 77.29 feet(NBT)



REGISTER'S OFFICE }
 Forest County, Wis. }
 Received for record this 27th day
 of October A.D., 1999 at
10:05 o'clock A.M. and recorded
 in Vol. Corner Restoration
 page V-9
Kay Swanson, Deputy
 Register of Deeds

V-9

6-1

43914 29 0000

(e) Describe any material discrepancy between the location of the corner as restored or reestablished and the location of that corner as previously restored or reestablished by distance and direction. Show the discrepancy on the plan view drawing under (d), above. Show the distances between the corner as previously restored or reestablished and (1) the corner as restored or reestablished, and (2) to at least 2 of the witness monuments shown on the drawing in (d), above.

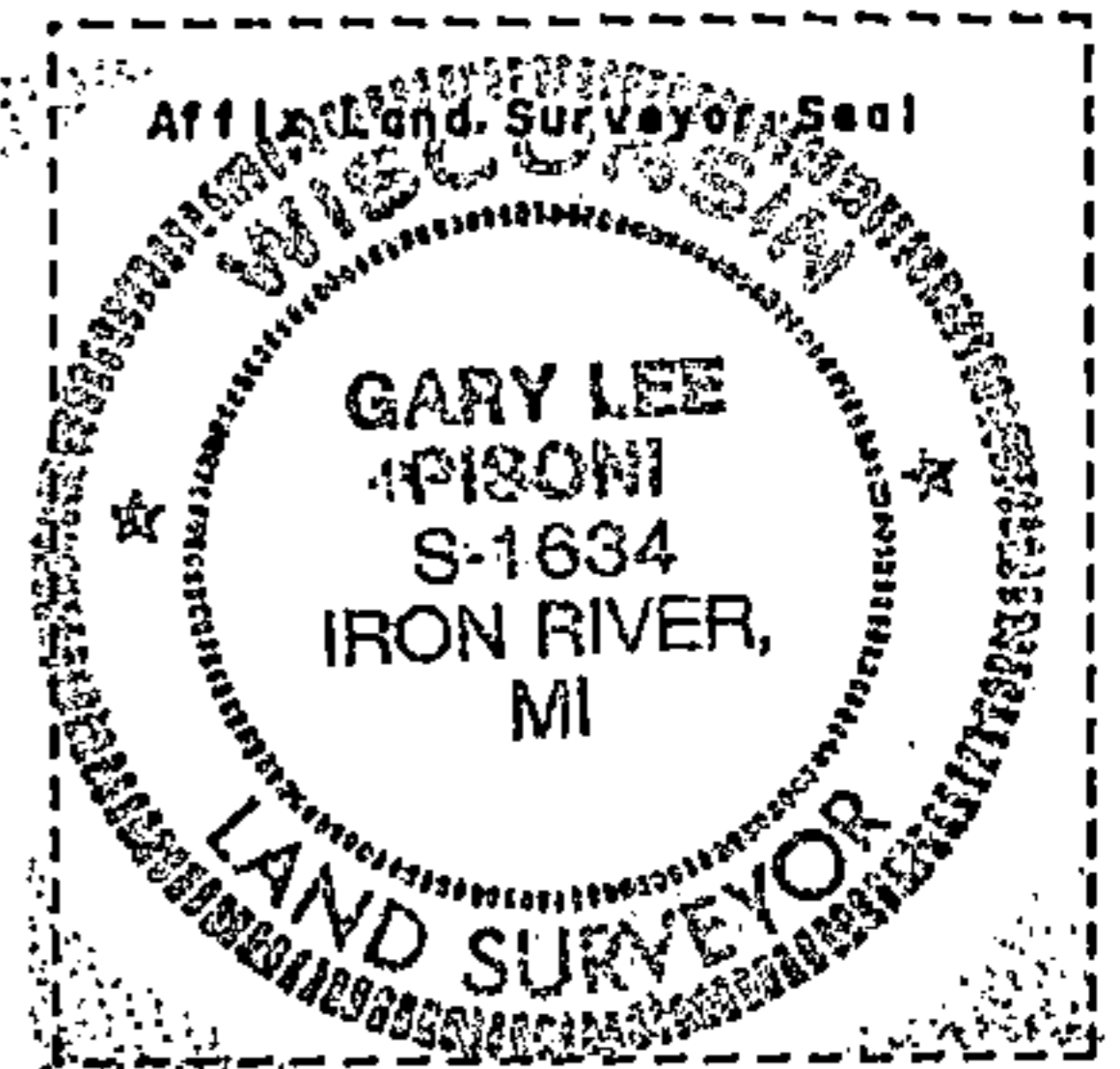
None

(f) Was the corner restored through acceptance of (1) an obliterated evidence location, or, (2) a found perpetuated location?

Found perpetuated location.

(g & h) Was the corner reestablished through lost corner proportionate methods? If so, show the method, including the directions and distances to other public land survey corners used as evidence or used for proportioning in determining the corner location?

(1) I, Gary L. Pisoni
(type or print name) certify that the corner location shown on this record was determined by me or under my direction and control and that this U.S. Public Land Survey Monument Record is correct and complete to the best of my knowledge and belief.



Signature

Date

CERTIFICATE READY FOR FILING:

[Signature]
District Ranger