

CERTIFIED LAND CORNER RESTORATION

State of Wisconsin }
County of Forest } ss.

I, Jean F. Resvick, do hereby certify that on the 31 day of October, 1975, I found evidence of the East Quarter corner of Section 26 Township 39 North, Range 14 East, Fourth Principal Meridian, as described hereon; and that from this evidence I established a new monument and accessories as described hereon to perpetuate the original location of this corner:

Description of original monument and accessories and subsequent restorations:

Survey in 1865 by William E. Daugherty
40.00 chains North between Section 25 and 26, set post.
Sugar 12, S19W, 38 lks.
Sugar 12, N9E, 18 lks.
North, 30 links, creek 30 links wide runs Southeast.

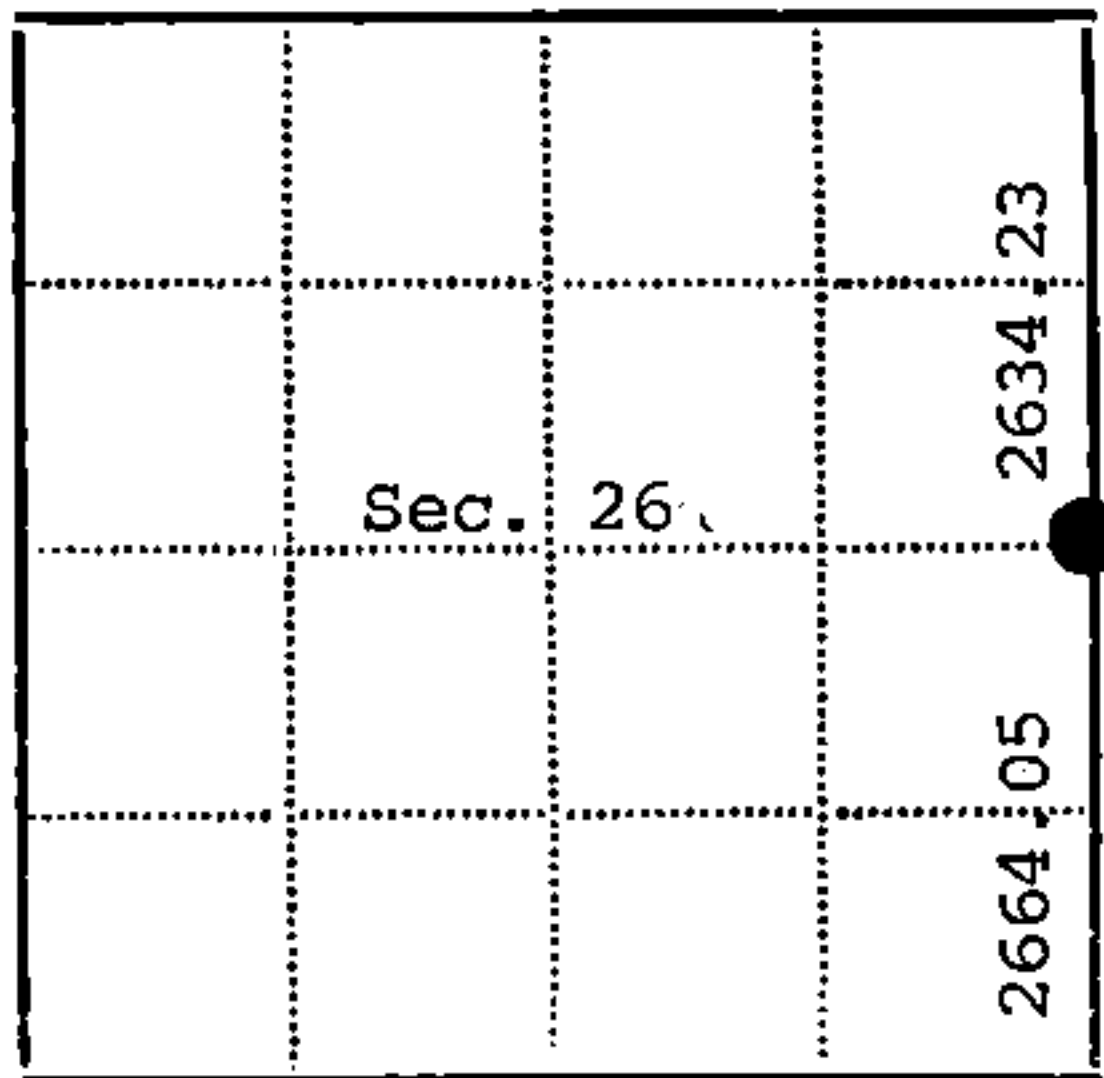
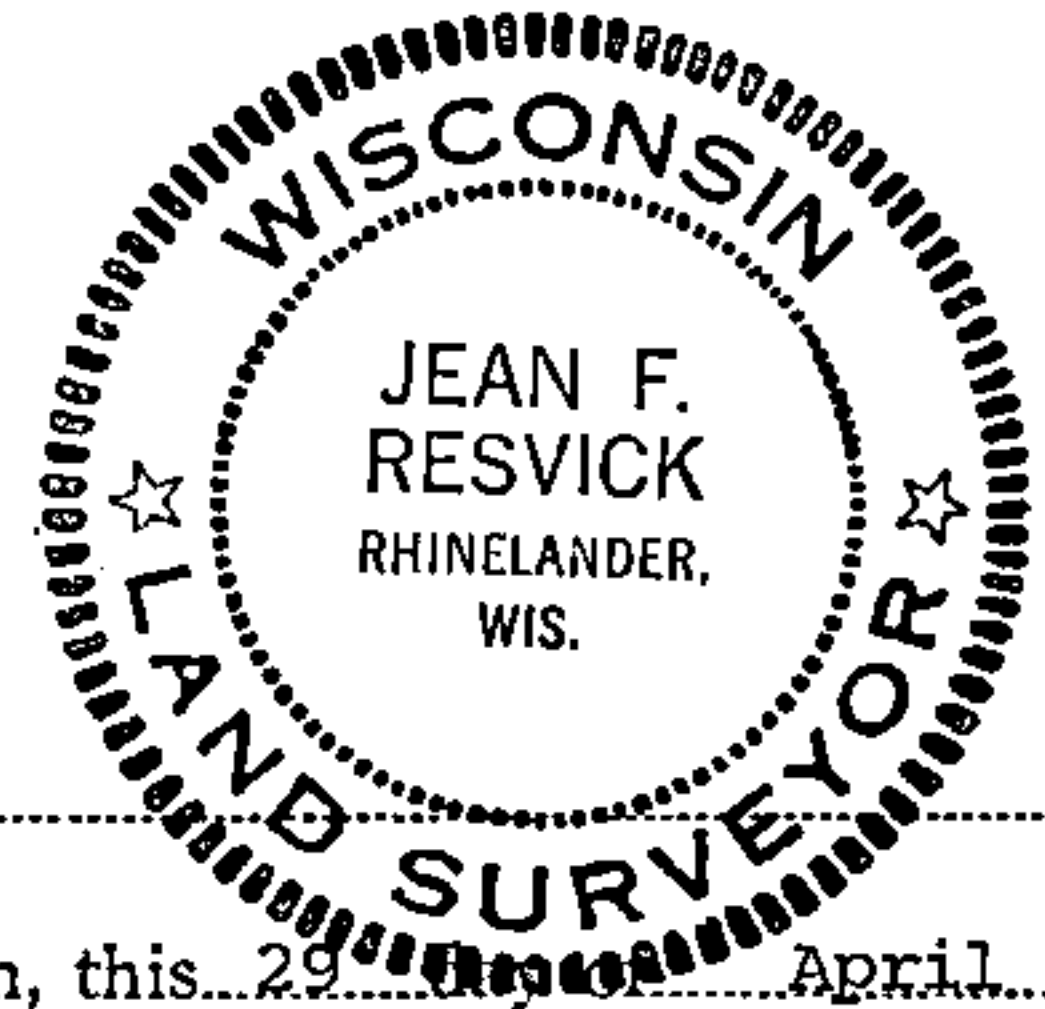
Description of corner evidence found:

Old State Highway 139 runs North and South, old established fence runs east. The center line of road and fence east has been accepted locally as the quarter corner. No evidence of the original bearing trees were found. The stream channel to the North appears to have been altered by road fill and culverts. The road was excavated with a back hoe and no evidence of corner posts were found. The total distance between the stream and the township line South is in agreement with the total recorded distance and the position on the center line of road and fence east is accepted as the location of this quarter corner.

Description of monument and accessories I established to perpetuate the location of this corner:

At the corner position established above, I set a 2 inch inside diameter, galvanized iron pipe, 3 feet long, filled with concrete 0.5 feet below the surface of the black top road, with brass cap stamped: T39N, R14E, 1/4, S26, S25, 1975, S-802. Referenced to the following blazed and scribed new bearing trees.
White pine 10, N54E, 75.88 feet
White Spruce 11, N47W, 68.62 feet

43914262000



Resident witnesses.....
Dated at Rhinelander, Wisconsin, this 29 day of April, 1976.
Signature: Jean F. Resvick Title: Land Surveyor
(County Surveyor, Registered Land Surveyor, or other duly authorized official)
Surveyors Registration No. S-802 DOCUMENT NUMBER 109607
Office of Register of Deeds County of Forest
I hereby certify that the within instrument was filed in this office for record on the 2nd day of July, 1976, and was filed in Book No. Page No. of County Records.
Signature: Eugene Stutzman Title: Register of Deeds

Township 39 North, Range 14 East, Section 26, Index No. T-21, Page No.

T21

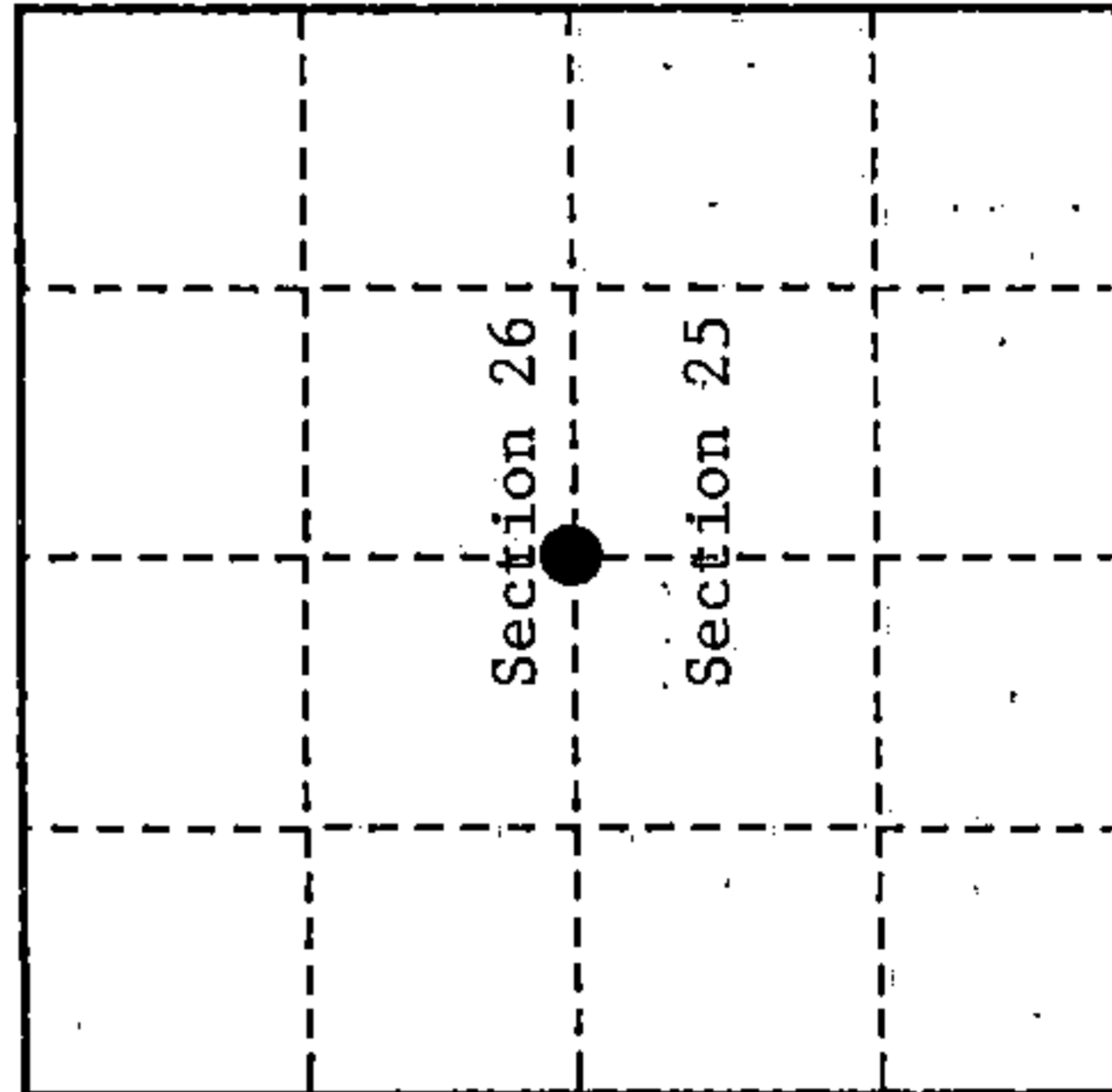
U. S. PUBLIC LAND SURVEY MONUMENT RECORD

INSTRUCTIONS:

This record shall show the location of the corner and shall include all of the following nine elements (a through i).

- (a) Identify the corner by reference to the U.S. public land survey system.
- - Corner monument restored.

Quarter Corner common to Sections 26 and 25
T39N, R14E, Forest County, Wisconsin



- (b) Describe any record evidence, monument evidence, occupational evidence, testimonial evidence or any other material evidence you considered, and whether the monument was found or placed.

Original Government Survey in 1865 by William E. Daugherty.

In 1975, Jean Resvick, a Land Surveyor with the U.S. Forest Service, accepted the centerline of a North/South road and a fence line to the East as the best available evidence for restoring the corner position. He set a 2" diameter galvanized iron pipe, 0.5' below the surface of a blacktop road with a brass cap stamped as follows:

T39N, R14E, 1/4, S26, S25, 1975, S-802 from which the following bear:

- White Pine 14" N 54°E 75.88 feet
- White Spruce 12" N 47°W 68.62 feet

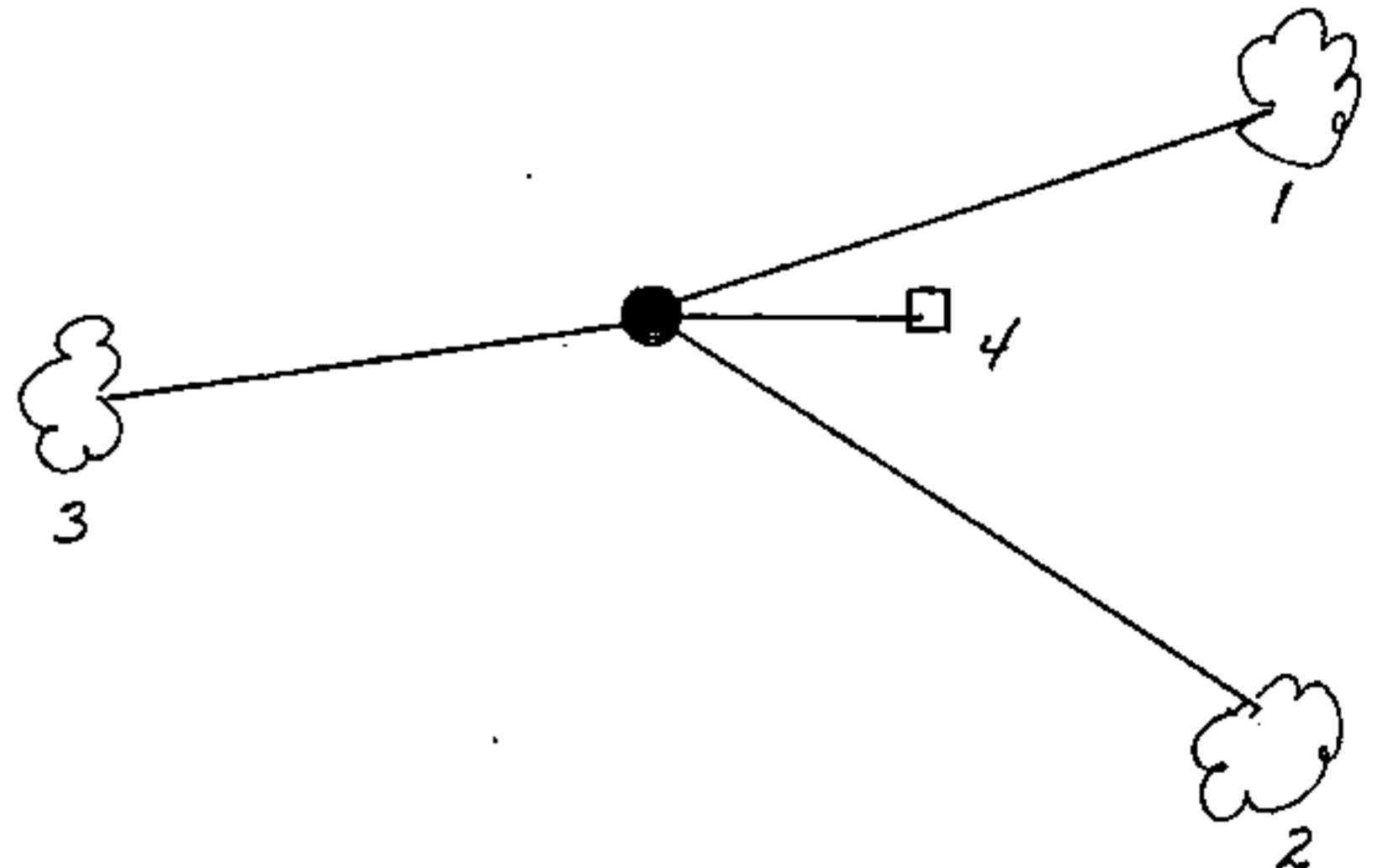
On 9/25/99, Gary L. Pisoni, RLS found above monument and assessories as described below.

See previous Land Corner Certificate dated July 2, 1976, Document Number 103607.

- (c) In the plan view drawing below, provide reference ties to at least 4 witness monuments, or, if the location is within a municipality, to at least 2 witness monuments. (witness monuments shall be made of concrete, natural stone, iron or other equally durable material.)

- (d) Show a plan view drawing depicting the relevant monuments and reference ties which is sufficient in detail to enable accurate relocation of the corner monument if the corner monument is disturbed. Indicate north.

1. White Pine, 18", N 54°E, 75.83 feet
2. White Spruce, 14", S 54°E, 68.66 feet (NBT)
3. White Spruce, 10", S77°W, 36.47 feet (NBT)
4. Steel sign post, East, 19.85 feet (new)



REGISTER'S OFFICE
Forest County, Wis.
Received for record this 27th day
of October A.D., 1999 at
10:05 o'clock A.M. and recorded
in Vol. Corner Restoration
page T-21
Kay Swanson, Deputy
Register of Deeds

43914 26 2000

T-21

(e) Describe any material discrepancy between the location of the corner as restored or reestablished and the location of that corner as previously restored or reestablished by distance and direction. Show the discrepancy on the plan view drawing under (d). above. Show the distances between the corner as previously restored or reestablished and (1) the corner as restored or reestablished, and (2) to at least 2 of the witness monuments shown on the drawing in (d), above.

None

(f) Was the corner restored through acceptance of (1) an obliterated evidence location, or, (2) a found perpetuated location?

Restored from accepted evidence.

(g & h) Was the corner reestablished through lost corner proportionate methods? If so, show the method, including the directions and distances to other public land survey corners used as evidence or used for proportioning in determining the corner location?

(1) I, Gary L. Pisoni

(type or print name) certify that the corner location shown on this record was determined by me or under my direction and control and that this U.S. Public Land Survey Monument Record is correct and complete to the best of my knowledge and belief.

Gary L. Pisoni
Signature

10-1-99
Date

CERTIFICATE READY FOR FILING:

C.B. [Signature]
District Ranger



Stock No. 26273