

U.S. PUBLIC LAND SURVEY MONUMENT RECORD

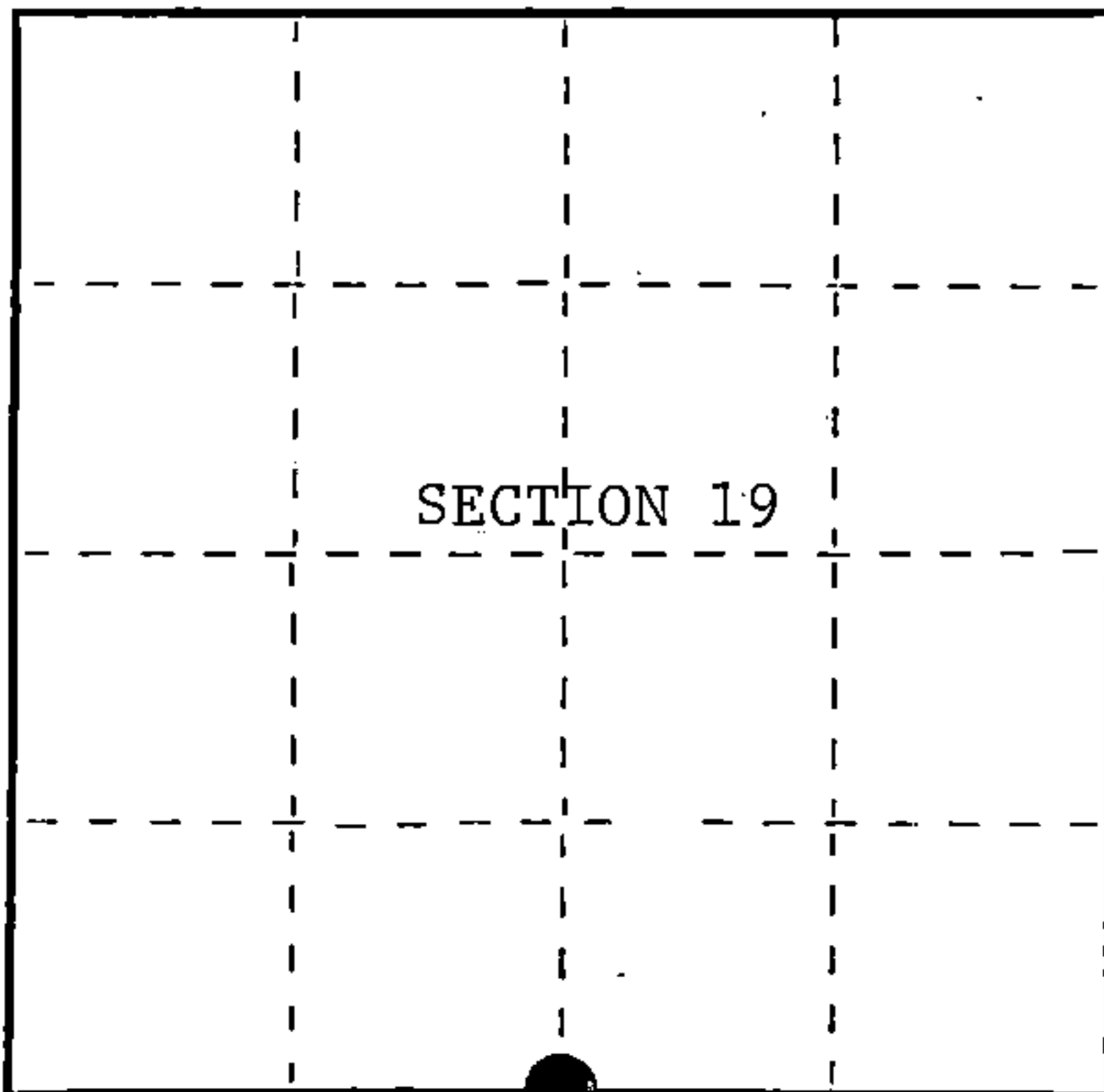
Index No. R-3

State of Wisconsin }  
County of Forest } ss.

I, William B. Cochrane, do hereby certify that on the 17th day of June, 1982, I found evidence of the South Quarter corner of Section 19 Township 39, North, Range 14 East, Fourth Principal Meridian, as described hereon; and that from this evidence I established a new monument and accessories as described hereon to perpetuate the original location of this corner.

Resident witnesses:

State Plane Co-ordinates  
N- 247,236.1744  
E-2,308,911.1610



○ = Corner monument restored.

History of original corner establishment:

Original Government Survey in 1857 by Alfred Millard. East corrected between Sections 19 and 30, at 44.12 chains, set Quarter Section Post to Sections 19 and 30, from which the following bear;

Birch	14"	N59°W	18 lks.
Hemlock	12"	S78°E	34 lks.

Description of corner evidence found:

No Corner evidence was recovered.

I restored the corner position at proportionate distance and on line between the Southwest and Southeast Section Corners of Section 19.

Description of monument and accessories I established to perpetuate the original location of this corner.

At the corner position, set a 2½ inch diameter aluminum pipe monument, 3 feet long, 2½ feet in the ground, with an aluminum cap stamped; T39N, R14E, 1/4, S19, S30, 1982, S-1107. From which the following new blazed and scribed bearing trees bear;

R. Maple	10"	S16°E	65.25 feet
S. Maple	8"	S36°W	57.65 feet
Steel Sign Post		North	0.82 feet

Dated at Hiles, Wis., this 14th day of February, 1989

Signature *William B. Cochrane* Title Land Surveyor Registration No. S-1107  
(County Surveyor, Registered Land Surveyor, or other duly authorized official)

Office of Register of Deeds, County of Forest, I hereby certify that the within instrument was filed in this office for record on the 12th day of April, 1989 at 9:10 o'clock A. M.

*Paul Aschenbrenner*  
(Register of Deeds)

By \_\_\_\_\_ Deputy

FORM NO. 985-A

H.C. Miller Company  
MILWAUKEE, WISCONSIN

Stock No. 26273

DOCUMENT NUMBER

137188

43914190020

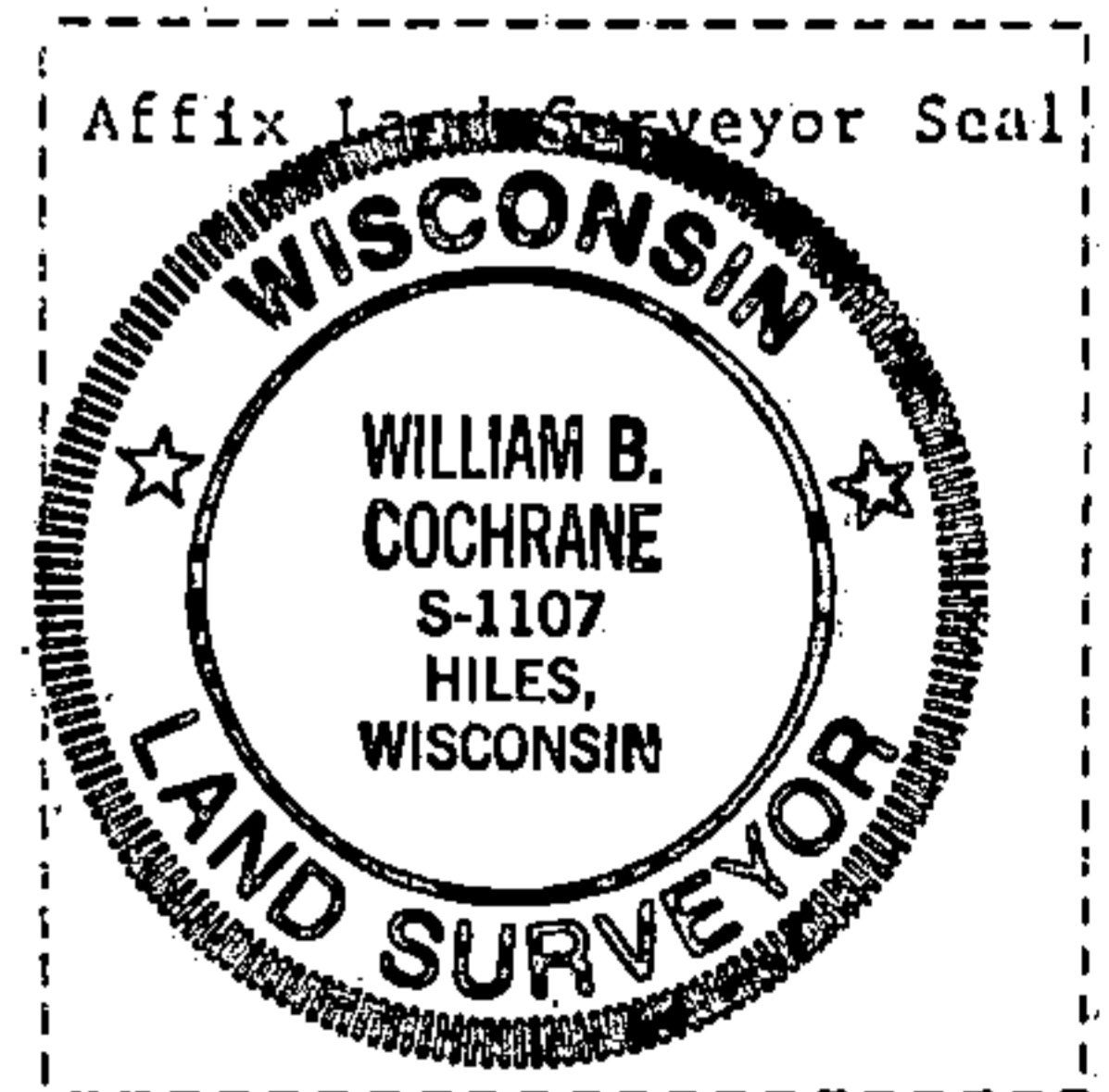
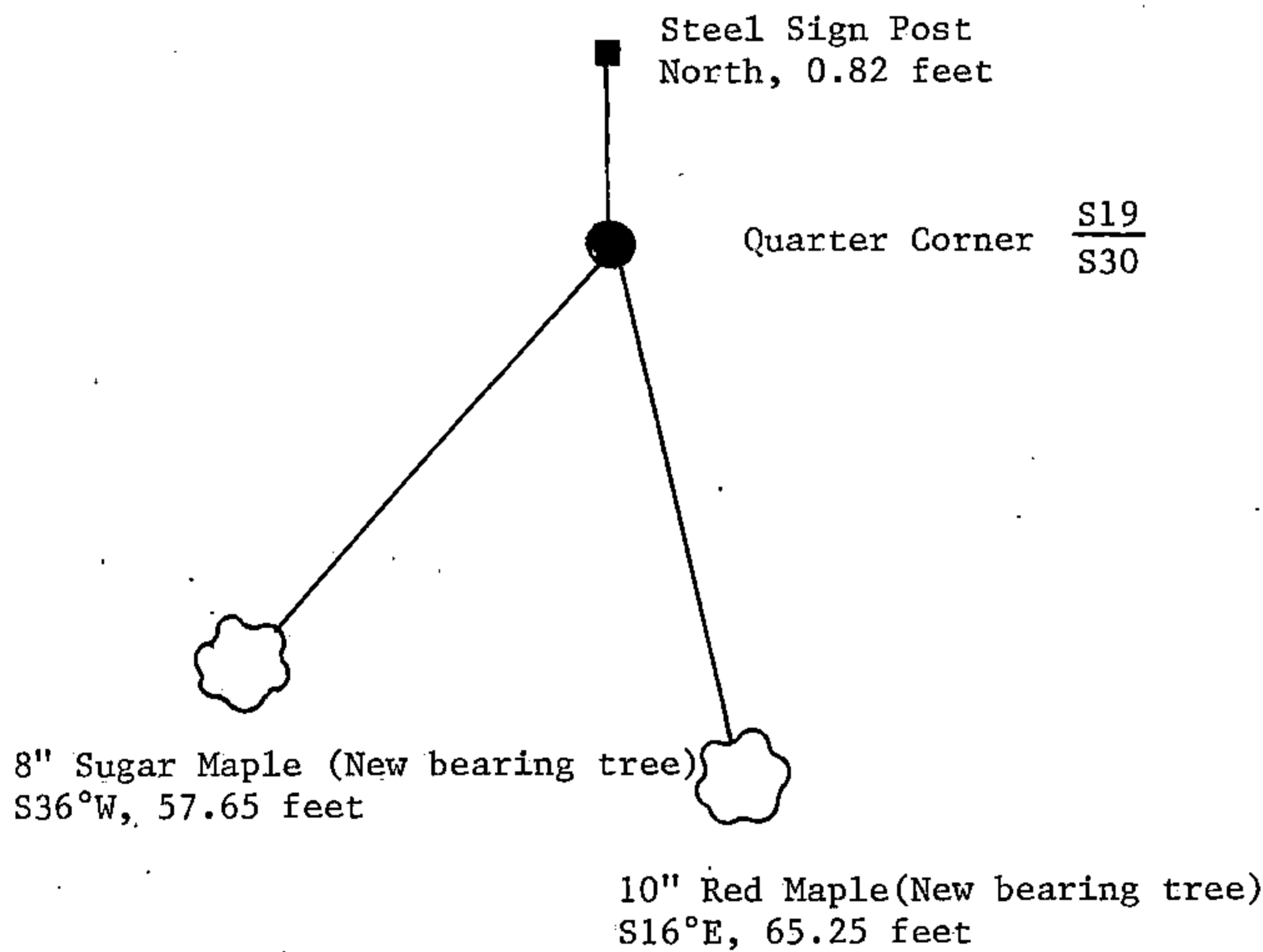
(e) Describe any material discrepancy between the location of the corner as restored or reestablished and the location of that corner as previously restored or reestablished by distance and direction. Show the discrepancy on the plan view drawing under (d), above. Show the distances between the corner as previously restored or reestablished and (1) the corner as restored or reestablished, and (2) to at least 2 of the witness monuments shown on the drawing in (d), above.

See drawing below.

(f) Was the corner restored through acceptance of (1) an obliterated evidence location, or, (2) a found perpetuated location?

(g&h) Was the corner reestablished through lost corner proportionate methods? If so, show the method, including the directions and distances to other public land survey corners used as evidence or used for proportioning in determining the corner location?

Re-established through lost corner proportionate methods.



(i) I, William B. Cochrane  
 (type or print name) certify that the corner location shown on this record was determined by me or under my direction and control and that this U.S. Public Land Survey Monument Record is correct and complete to the best of my knowledge and belief.

William B. Cochrane February 14, 1989  
 Signature Date

Survey requested by: [Signature]  
 District Ranger Date