

CERTIFIED LAND CORNER RESTORATION

State of Wisconsin }
 County of Forest } ss.

I Jean F. Resvick, do hereby certify that on the 8th day of May, 19 67, I found evidence of the Northeast section corner of Section 14 Township 39 North, Range 14 East, Fourth Principal Meridian, as described hereon; and that from this evidence I established a new monument and accessories as described hereon to perpetuate the original location of this corner:

Description of original monument and accessories and subsequent restorations:

Original survey by Alfred Millard in 1857.
 80.0 chains north between Sections 13 and 14.
 Set wood post for corner of Sections 11, 12, 13 and 14.
 Tamarack 12, N28°E, 18 links.
 Spruce 8, S24°W, 19 links.



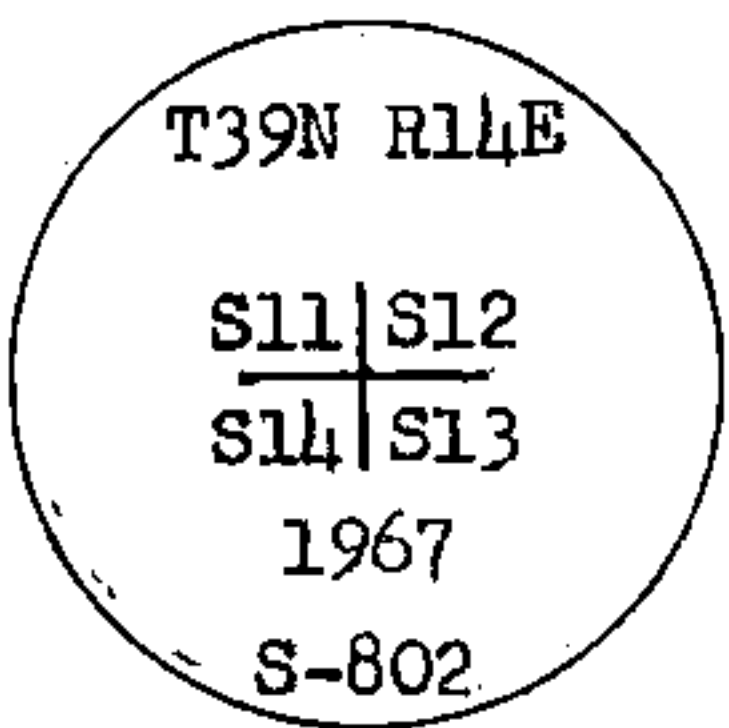
Description of corner evidence found:

Found corner marked with point of old post, alongside of a 2 inch squared post and a 2 inch iron pipe.
 Tamarack stump bears N28°E, 12 ft. from post point.
 Spruce stump, scribing readable, bears S24°W, 12 ft. from post point.

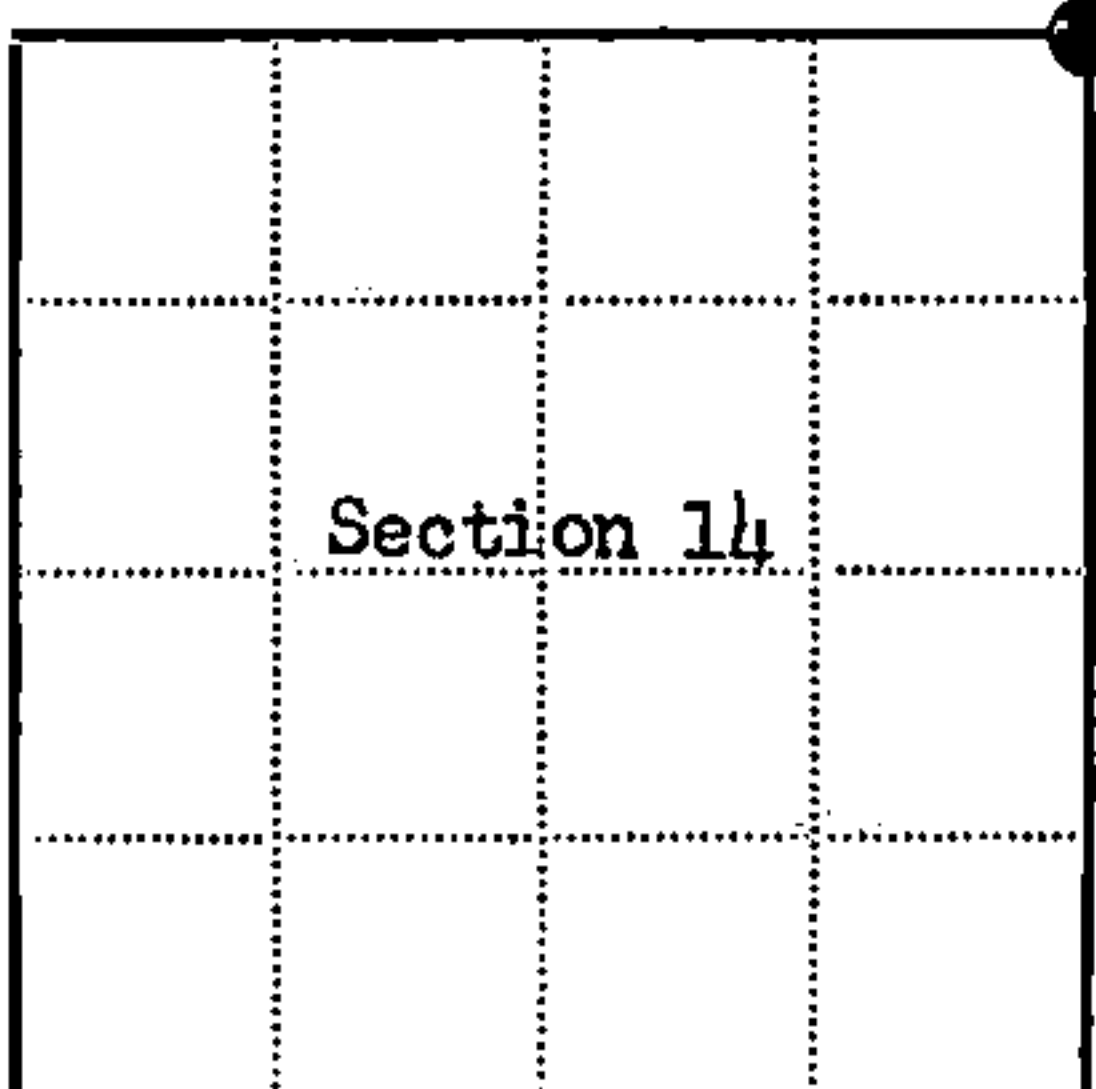
Description of monument and accessories I established to perpetuate the original location of this corner:

Replace post point with a 2-inch inside diameter, galvanized wrought iron pipe, 5 feet long, filled with concrete, flanged at bottom, with brass cap marked:

43914110000



from which the following new blazed and scribed bearing trees bear:
 Spruce 4 inches, N63°E, 22.75 ft. or 34.470 lks.
 Tamarack 3 inches, S69°E, 40.40 ft. or 61.212 lks.
 Spruce 4 inches, S3°W, 9.65 ft. or 14.621 lks.
 W. Birch 6 inches, N77°W, 91.71 ft. or 138.955 lks.



● = Corner monument restored
 □ =

Resident witnesses.....

Dated at Rhinelanders Wisconsin, this 1st day of August 1967....

Signature Jean F. Resvick Title Cadastral Surveyor
 (County Surveyor, Registered Land Surveyor, or other duly authorized official)

Surveyors Registration No. S-802 DOC. NO. 94233

Office of Register of Deeds County of Forest

I hereby certify that the within instrument was filed in this office for record on the 27th day of February 1968, and was filed in Book No. I Page No. _____ of County Records.

Signature Eugene Stegny Title Register of Deeds

Township 39 North, Range 14 East, Section 14, Index No. J-21, Page No. _____

J 21

U.S. PUBLIC LAND SURVEY MONUMENT RECORD

Index No. J-21

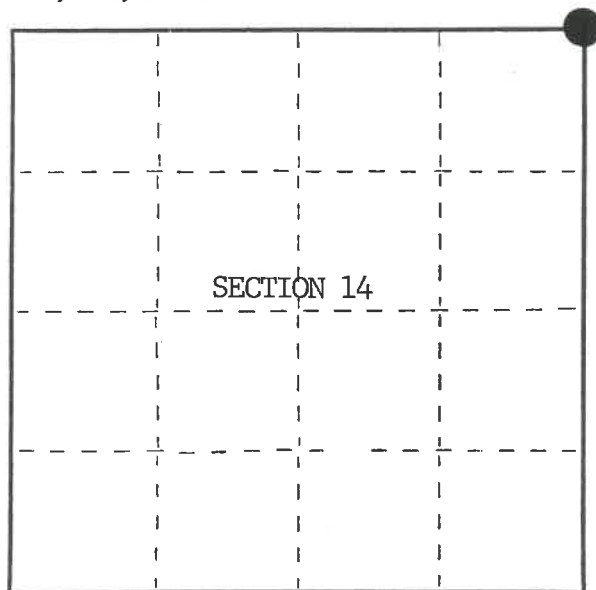
State of Wisconsin }
County of Forest } ss.

I, William B. Cochrane, do hereby certify that on the 19th day of August, 1985, I found evidence of the Northeast Section corner of Section 14 Township 39 North, Range 14 East, Fourth Principal Meridian, as described hereon; and that from this evidence I established a new monument and accessories as described hereon to perpetuate the original location of this corner.

Resident witnesses:

Tony Tillman

State Plane Co-ordinates
N- 258,236.1090
E-2,332,285.6360



○ = Corner monument restored.

History of original corner establishment:

Original Government Survey in 1865 by William E. Daugherty and Alex McDill.

Corner restored on May 8th, 1967, by Jean Resvick, a Registered Land Surveyor with the U.S. Forest Service.

See Certified Land Corner Restoration Certificate #94233, filed in the Registrar of Deeds Office, in the Forest County Courthouse.

Description of corner evidence found:

Found monument as described and in place, from which the following bear;

Table with 4 columns: Tree type, Diameter, Bearing, and Distance. Rows include Spruce (6", N63°E, 22.75 feet), Spruce (4", S 3°W, 9.65 feet), Tamarack (4", S69°E, 40.40 feet), and W. Birch (10", N77°W, 91.71 feet).

Description of monument and accessories I established to perpetuate the original location of this corner.

Blazed and scribed the following new bearing trees;

Table with 4 columns: Tree type, Diameter, Bearing, and Distance. Rows include Tamarack (3", N68°E, 47.95 feet) and Maple (5", N28°W, 64.80 feet).

Dated at Hiles, Wis., this 5th day of February, 1986

Signature: William B. Cochrane, Title: Land Surveyor, Registration No. S-1107

Office of Register of Deeds, County of Forest, I hereby certify that the within instrument was filed in this office for record on the 11th day of March, 1987 at 3:30 o'clock P.M.

Signature: Paul Achenbrenner, (Register of Deeds)

By Deputy

DOCUMENT NUMBER 132351

Stock No. 26273

FORM NO. 985-A



43914110000

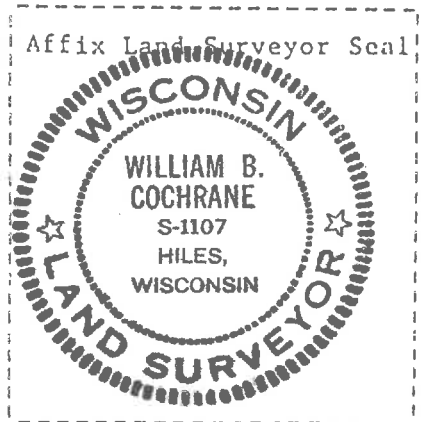
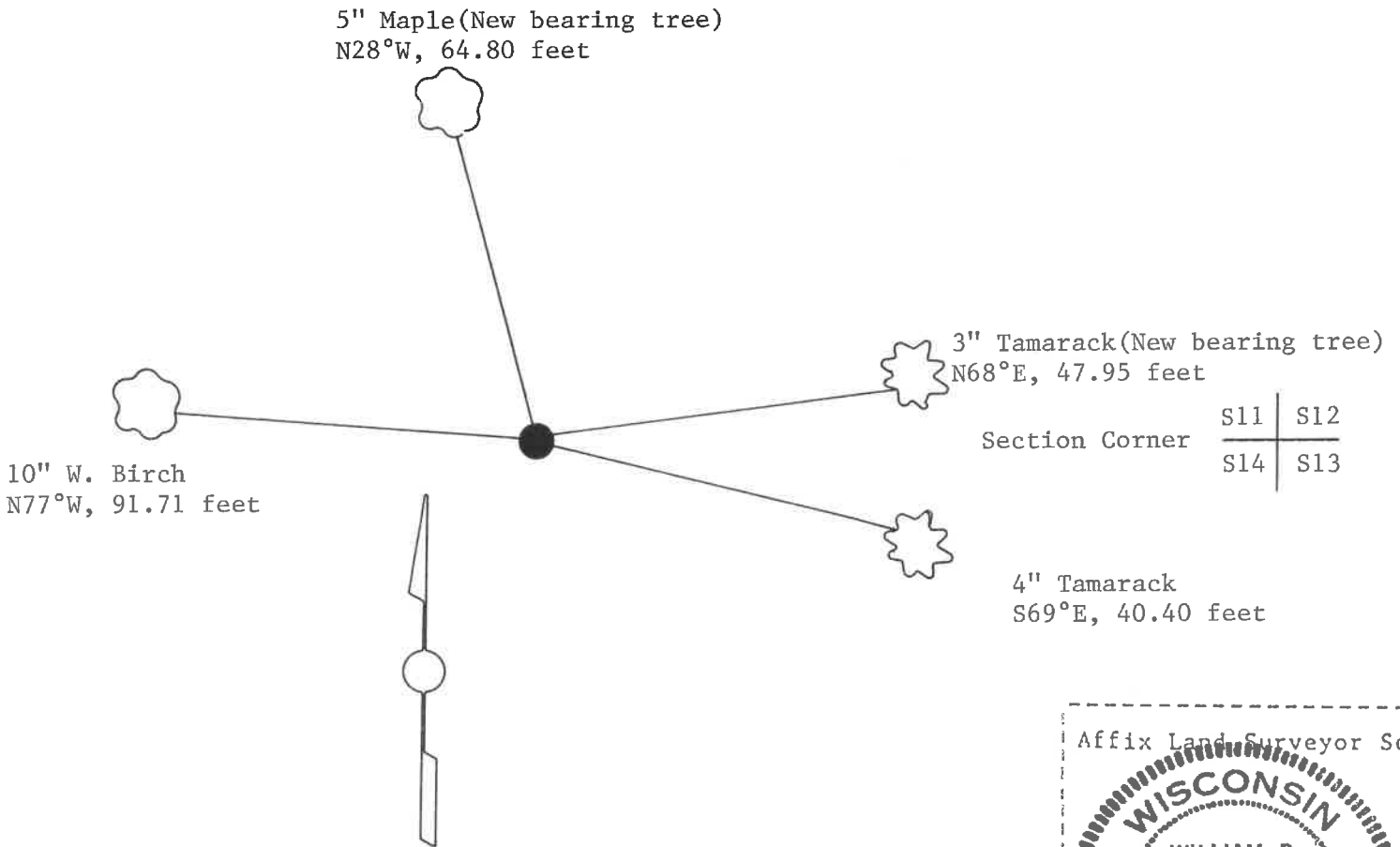
(e) Describe any material discrepancy between the location of the corner as restored or reestablished and the location of that corner as previously restored or reestablished by distance and direction. Show the discrepancy on the plan view drawing under (d), above. Show the distances between the corner as previously restored or reestablished and (1) the corner as restored or reestablished, and (2) to at least 2 of the witness monuments shown on the drawing in (d), above.

See drawing below.

(f) Was the corner restored through acceptance of (1) an obliterated evidence location, or, (2) a found perpetuated location?

Restored through acceptance of a found perpetuated location.

(g&h) Was the corner reestablished through lost corner proportionate methods? If so, show the method, including the directions and distances to other public land survey corners used as evidence or used for proportioning in determining the corner location?



(i) I, William B. Cochran
 (type or print name) certify that the corner location shown on this record was determined by me or under my direction and control and that this U.S. Public Land Survey Monument Record is correct and complete to the best of my knowledge and belief.

William B. Cochran October 7, 1986
 Signature Date

Survey requested by: [Signature] 3-9-87
 District Ranger Date