

CERTIFIED LAND CORNER RESTORATION

Index No. X-17

State of Wisconsin }
County of Forest } ss.

I William B. Cochran, do hereby certify that on the 27 th day of July, 1994, I found evidence of the East Quarter corner of Section 34 Township 39, North, Range 13 East, Fourth Principal Meridian, as described hereon; and that from this evidence I established a new monument and accessories as described hereon to perpetuate the original location of this corner.

Resident witnesses:

.....
.....
.....

History of original corner establishment:
Original Government Survey by William E. Daugherty in 1865.
North between sections 34 and 35 at 30.48' Hemlock 14". At 40 chains set post from which:
Hemlock 15" S30°E 50 lks
Hemlock 10" N05°W 17 lks

Description of corner evidence found:

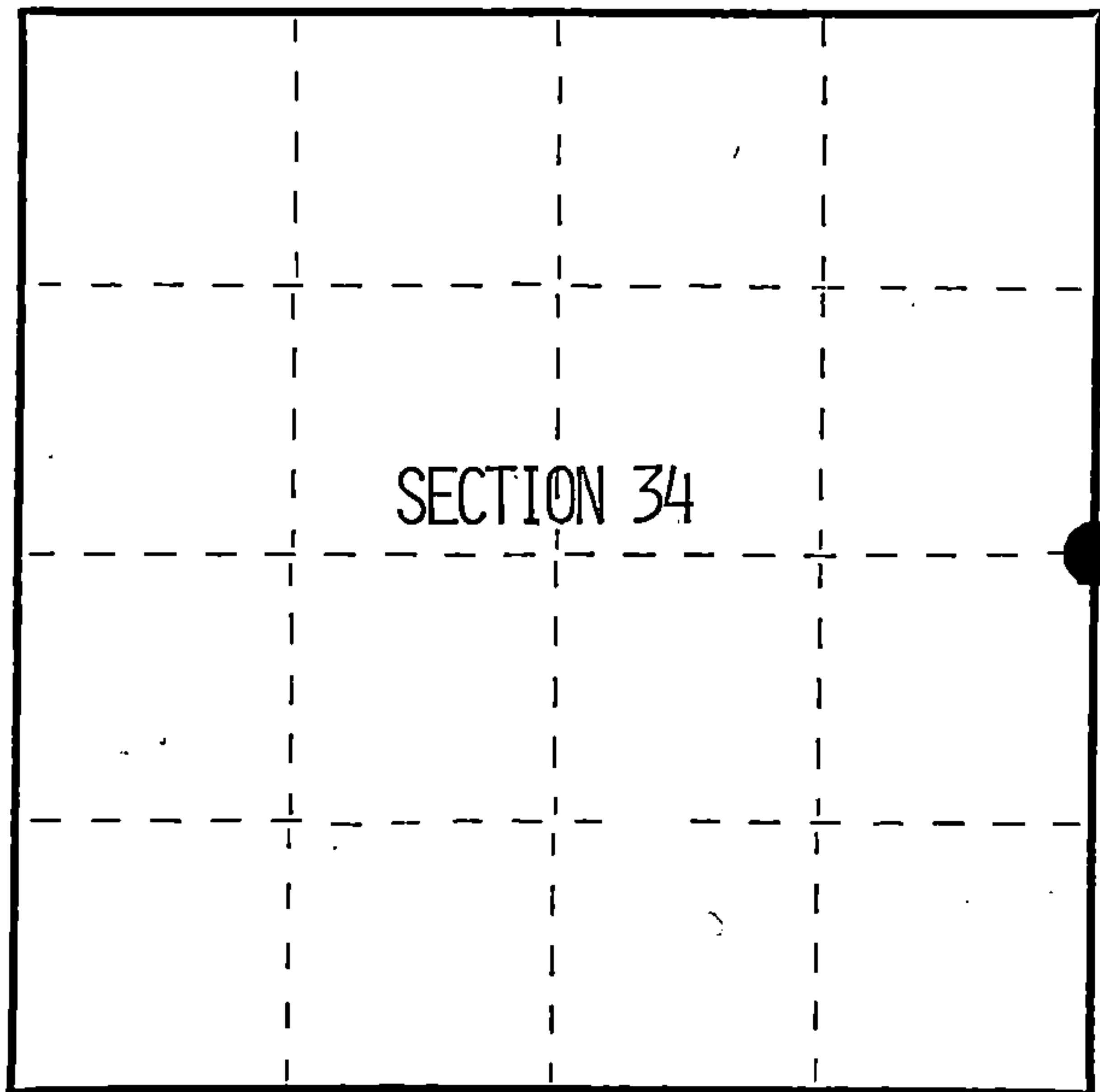
No original corner evidence was found. No other corner evidence was found.

Re-established the corner position at proportionate distance and on line between the Northeast and Southeast Section corners.

Description of monument and accessories I established to perpetuate the original location of this corner.

At the proportionate position, set a 2½" X36" aluminum pipe monument 4 feet in the ground with an aluminum cap stamped: T39N, R13E, 1/4, S34, S35, 1994, S-1107. From which:

Balsam 9" S80°E 31.10 feet
Spruce 7" S07°W 24.11 feet
Steel sign post North 1.00 feet



● = Corner monument restored.

Dated at Hiles, Wis., this 22 nd day of December, 1994

Signature William B. Cochran Title Land Surveyor Registration No. S-1107
(County Surveyor, Registered Land Surveyor, or other duly authorized official)

Office of Register of Deeds, County of Forest, I hereby certify that the within instrument was filed in this office for record on the 23rd day of August, 1996 at 2:30 o'clock P M.

(Register of Deeds)

By Paul Tomlinson Deputy

FORM NO. 985-A

H.C. Miller Company

Stock No. 26273

156594

43913342000

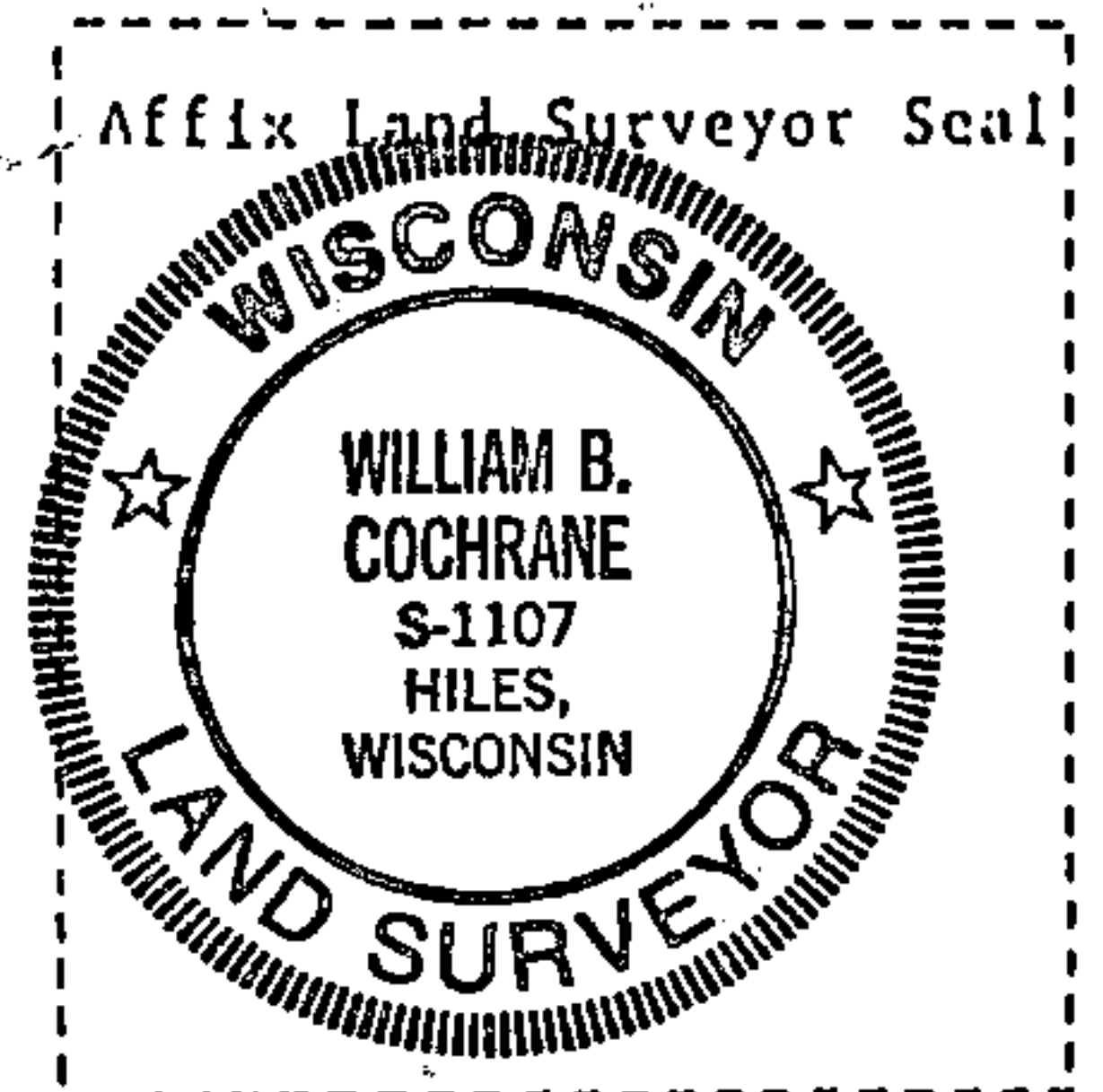
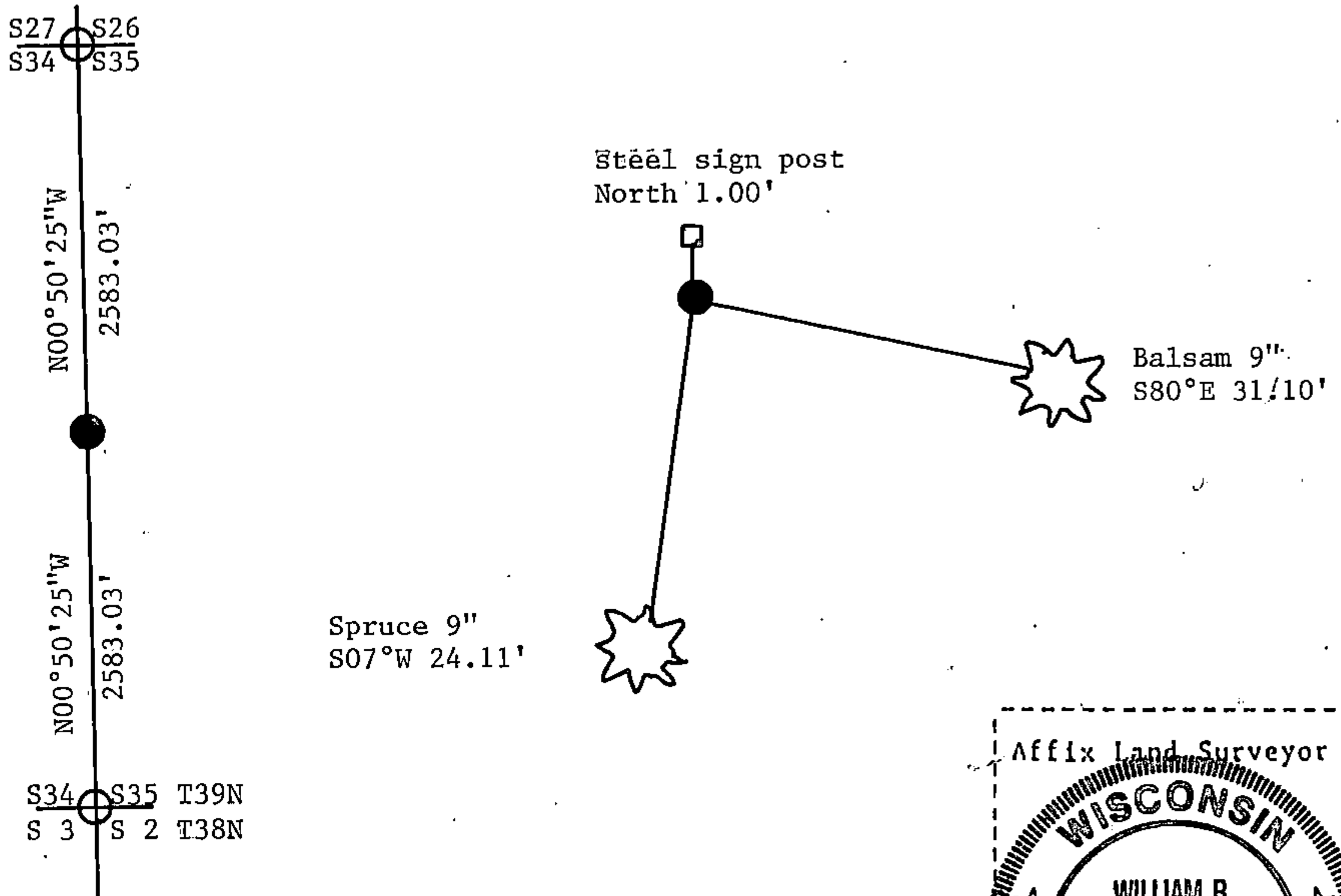
(e) Describe any material discrepancy between the location of the corner as restored or reestablished and the location of that corner as previously restored or reestablished by distance and direction. Show the discrepancy on the plan view drawing under (d), above. Show the distances between the corner as previously restored or reestablished and (1) the corner as restored or reestablished, and (2) to at least 2 of the witness monuments shown on the drawing in (d), above.

See drawing below.

(f) Was the corner restored through acceptance of (1) an obliterated evidence location, or, (2) a found perpetuated location?

Re-established through lost corner proportionate methods.

(g&h) Was the corner reestablished through lost corner proportionate methods? If so, show the method, including the directions and distances to other public land survey corners used as evidence or used for proportioning in determining the corner location?



(i) I, William B. Cochrane
(type or print name) certify that the corner location shown on this record was determined by me or under my direction and control and that this U.S. Public Land Survey Monument Record is correct and complete to the best of my knowledge and belief.

William B. Cochrane 12/22/94
Signature Date