

CERTIFIED LAND CORNER RESTORATION

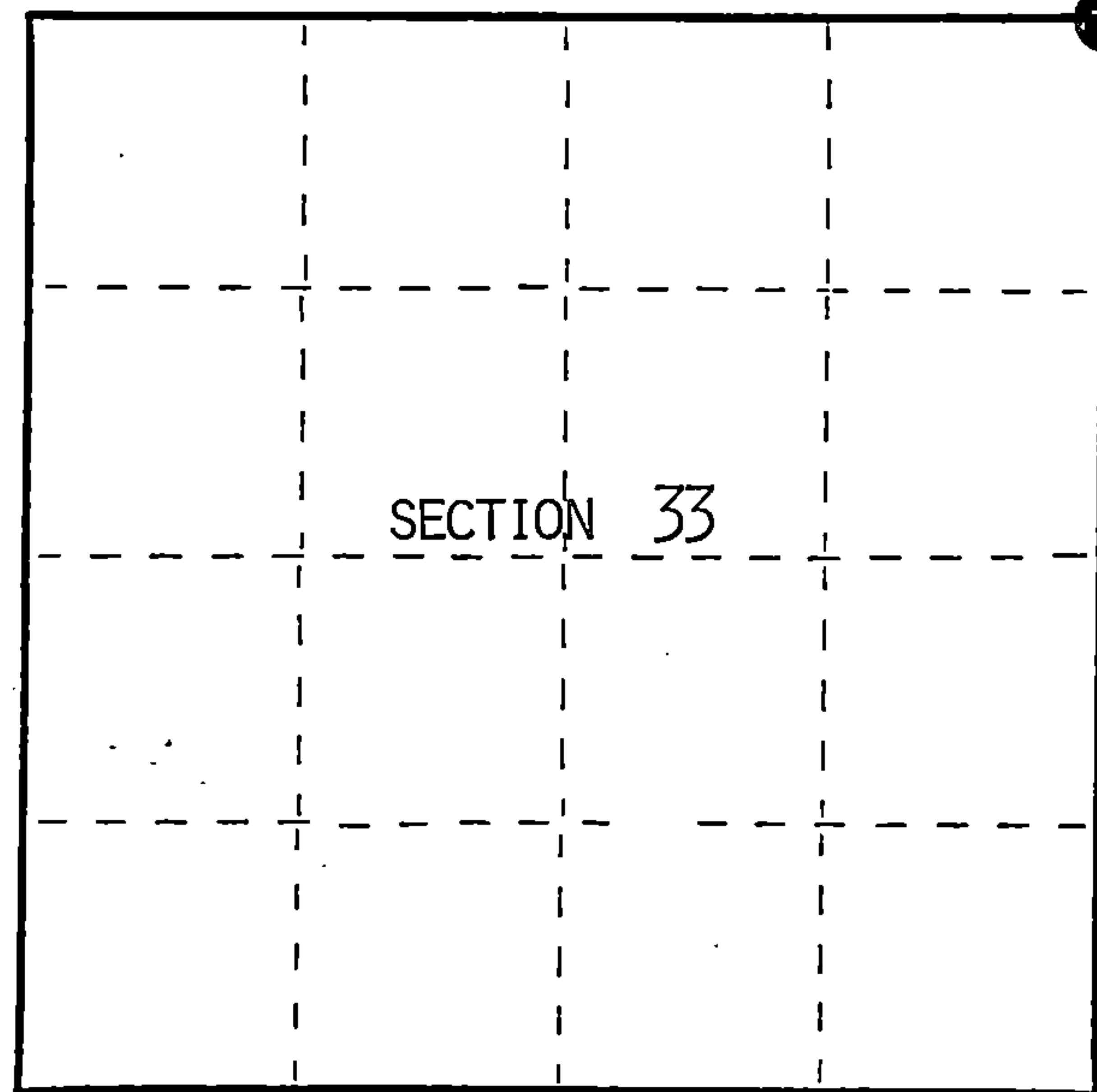
Index No. V-13

State of Wisconsin }
County of Forest } ss.

I, William B. Cochrane, do hereby certify that on the 27th day of February, 1994, I found evidence of the Northeast Section corner of Section 33 Township 39 North, Range 13 East, Fourth Principal Meridian, as described hereon; and that from this evidence I established a new monument and accessories as described hereon to perpetuate the original location of this corner.

Resident witnesses:

.....
.....
.....



● = Corner monument restored.

History of original corner establishment:

Original Government Survey by William E. Daugherty in 1865.
At 80 chains north between section 33 and 34 set post from which:
No original bearing trees were called at this corner.
5.75 chains north creek 40 lks runs northeast.
15.50 chains west creek 15 lks runs Northeast.

Description of corner evidence found:

No corner evidence found.

Re-establish through lost corner proportionate methods.

Description of monument and accessories I established to perpetuate the original location of this corner.

At the corner position set a 2 1/2" X 60" aluminum pipe monument 5 feet in the ground with an aluminum cap stamped: T39N, R13E, S27, S28, S33, S34, 1994, S-1107. From which:
Cedar 13" N35°E 25.09 feet
Cedar 13" S86°E 24.72 feet
Steel sign post North 1.00 feet
No other accessories available.

Dated at Hiles, Wis., this 21 st day of December, 1994

Signature William B. Cochrane Title Land Surveyor Registration No. S-1107
(County Surveyor, Registered Land Surveyor, or other duly authorized official)

Office of Register of Deeds, County of Forest, I hereby certify that the within instrument was filed in this office for record on the 23rd day of August, 1996 at 2:30 o'clock P. M.

(Register of Deeds)
By [Signature] Deputy

FORM NO. 985-A



Stock No. 26273

156586

43913280000

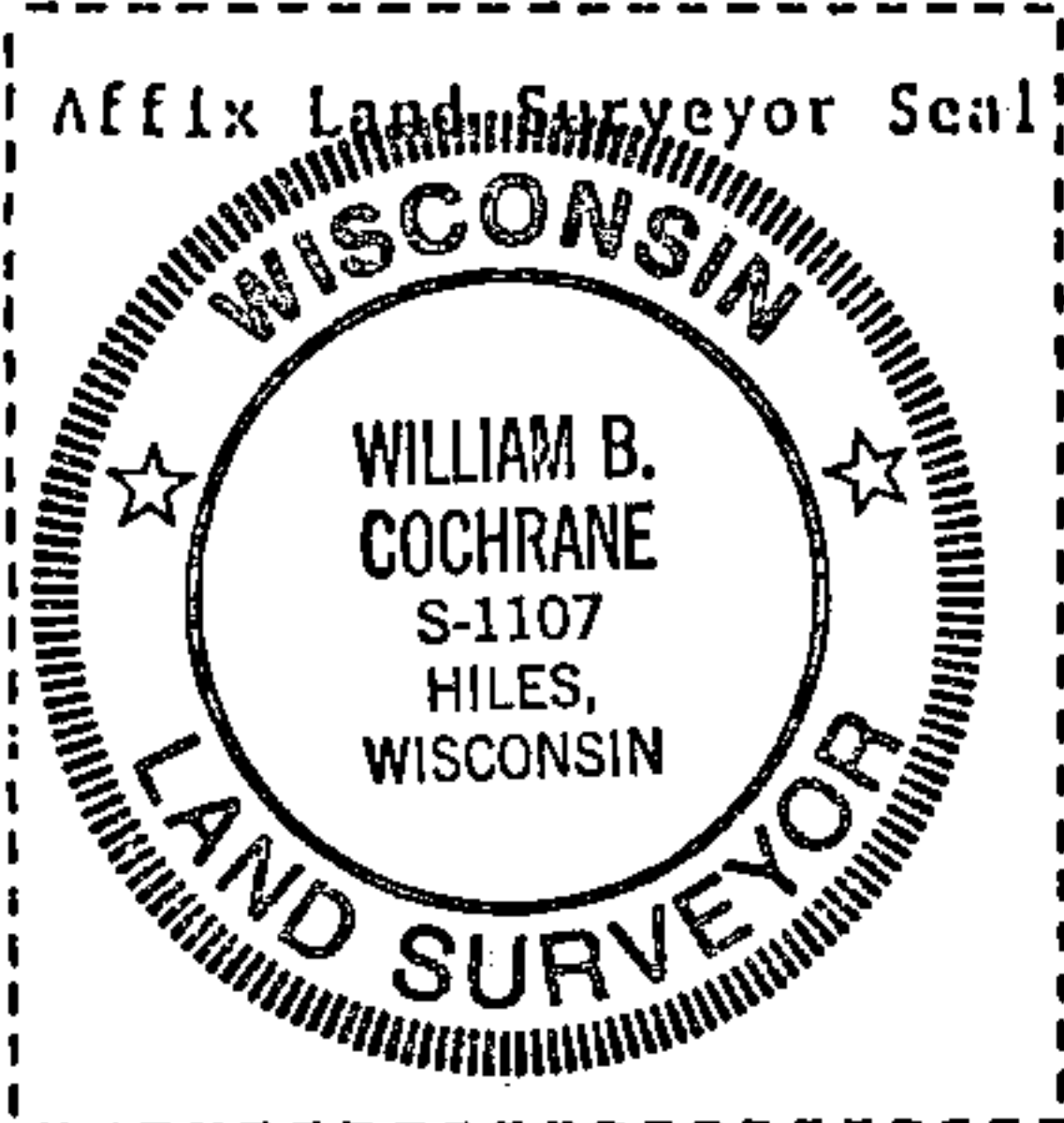
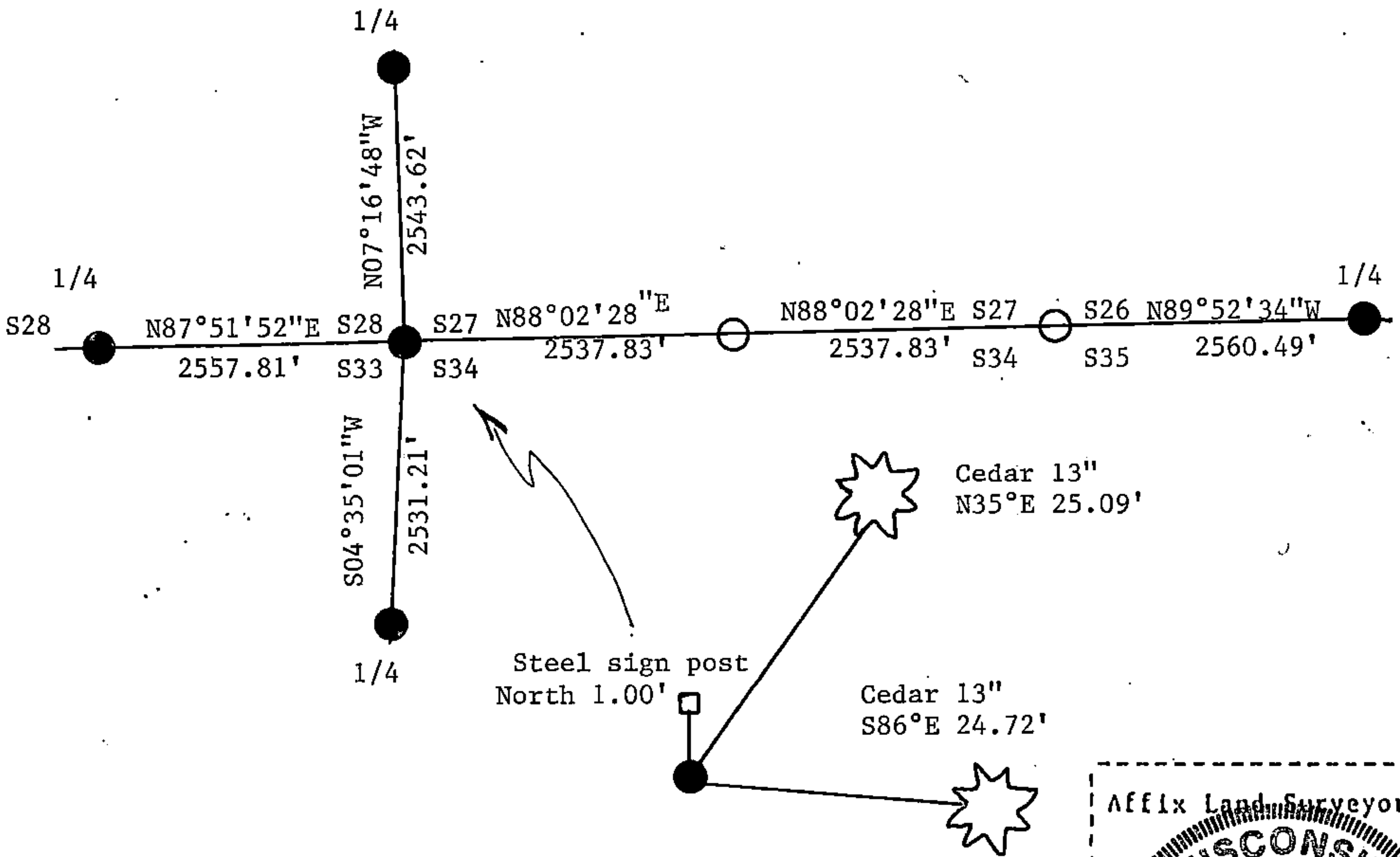
(d) Describe any material discrepancy between the location of the corner as restored or reestablished and the location of that corner as previously restored or reestablished by distance and direction. Show the discrepancy on the plan view drawing under (d), above. Show the distances between the corner as previously restored or reestablished and (1) the corner as restored or reestablished, and (2) to at least 2 of the witness monuments shown on the drawing in (d), above.

See drawing below.

(f) Was the corner restored through acceptance of (1) an obliterated evidence location, or, (2) a found perpetuated location?

Re-established through lost corner proportionate methods.

(gkh) Was the corner reestablished through lost corner proportionate methods? If so, show the method, including the directions and distances to other public land survey corners used as evidence or used for proportioning in determining the corner location?



(i) I, William B. Cochrane
 (type or print name) certify that the corner location shown on this record was determined by me or under my direction and control and that this U.S. Public Land Survey Monument Record is correct and complete to the best of my knowledge and belief.

William B. Cochrane 12/21/97
 Signature Date

Survey requested by: _____
 District Ranger Date