

U.S. PUBLIC LAND SURVEY MONUMENT RECORD

Index No. R-23

State of Wisconsin }  
 County of Forest } ss.

I, Gary L. Pisoni, do hereby certify that on the 22nd day of June, 1990, I found evidence of the South Quarter corner of Section 24 Township 39, North, Range 13 East, Fourth Principal Meridian, as described hereon; and that from this evidence I established a new monument and accessories as described hereon to perpetuate the original location of this corner.

Resident witnesses:

.....

.....

.....

History of original corner establishment:  
 Original Government Survey in 1865 by William E. Daugherty and Alex McDill. West corrected between Sections 24 and 25, at 40.33 chains, set Quarter Section Post to Sections 24 and 25, from which the following bear;

Birch	10"	S42°E	10 lks.
Birch	10"	N77°W	48 lks.

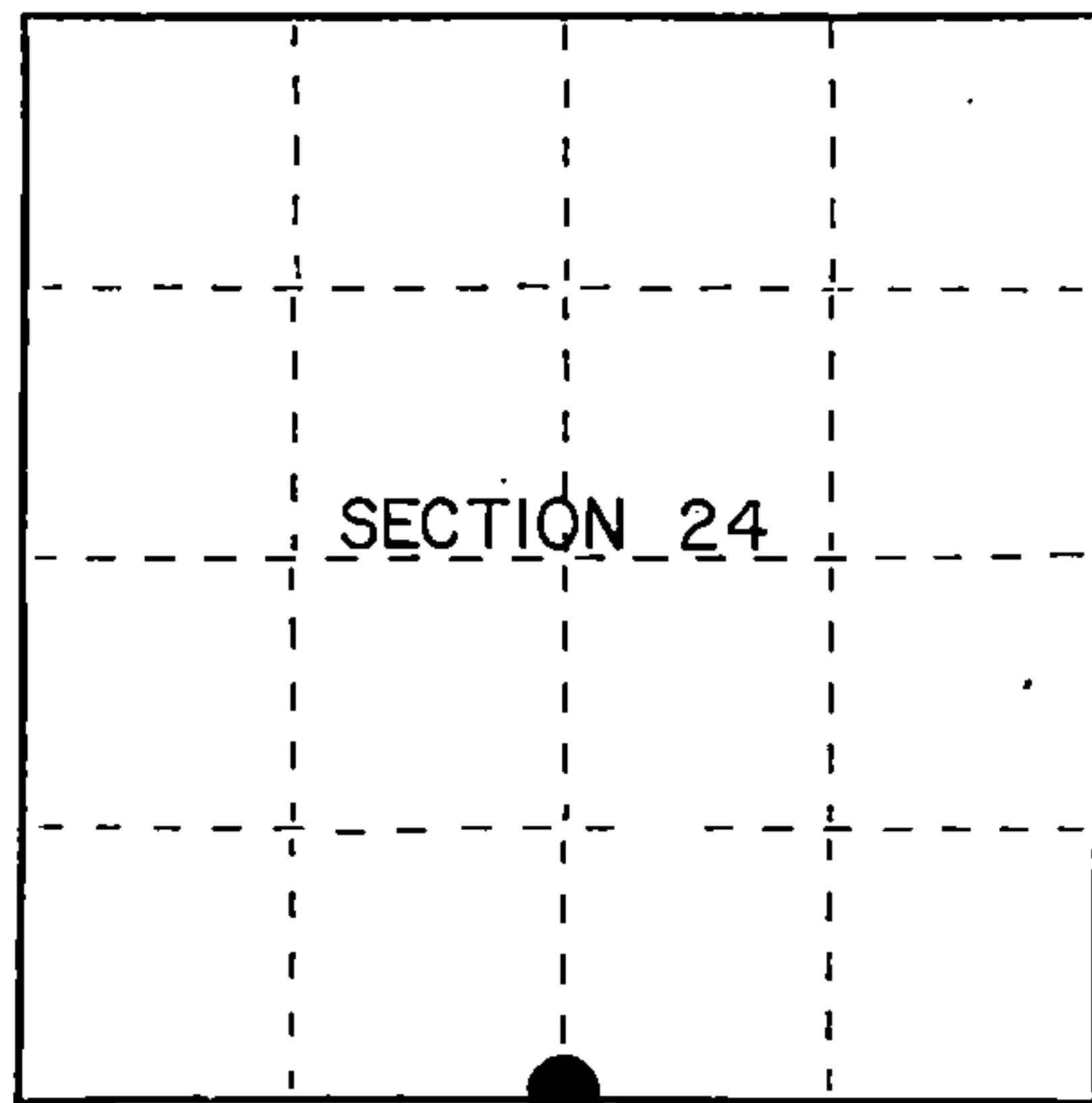
Description of corner evidence found:  
 No original corner evidence was recovered.

Found a 1 1/4" x 48" iron pipe along the south side of woods road. Same pipe and wood post was recovered by Jean Resvick of U.S.F.S. on 9/18/79.

I accept the iron pipe as the best available evidence for restoring the corner position.

Description of monument and accessories I established to perpetuate the original location of this corner.  
 In place of iron pipe, set a 2 1/2 inch diameter aluminum pipe monument, 3 feet long, 3 inches above the ground surface, with an aluminum cap stamped; T39N, R13E, 1/4, S24, S25, 1990, S-1634. From which the following new blazed and scribed bearing trees bear; (all measurements taken to a nail in side of tree)

Red Pine	7"	N35°E	5.85 feet
Red Pine	12"	N83°E	44.20 feet
Red Pine	12"	S12°E	20.89 feet
Red Pine	12"	S37°W	5.38 feet
Steel Sign Post		S30°E	0.86 feet



● = Corner monument restored.

Dated at Iron River, MI, ~~Wis.~~, this 8th day of December, 1990

Signature Gary L. Pisoni Title Land Surveyor Registration No. S-1634  
 (County Surveyor, Registered Land Surveyor, or other duly authorized official)

Office of Register of Deeds, County of Forest, I hereby certify that the within instrument was filed in this office for record on the 10th day of March, 1993 at 10:45 o'clock A. M.

Paul Scheibanner  
 (Register of Deeds)

By.....Deputy

FORM NO. 985-A

H.C. Miller Company

Stock No. 26273

146924

43913240020

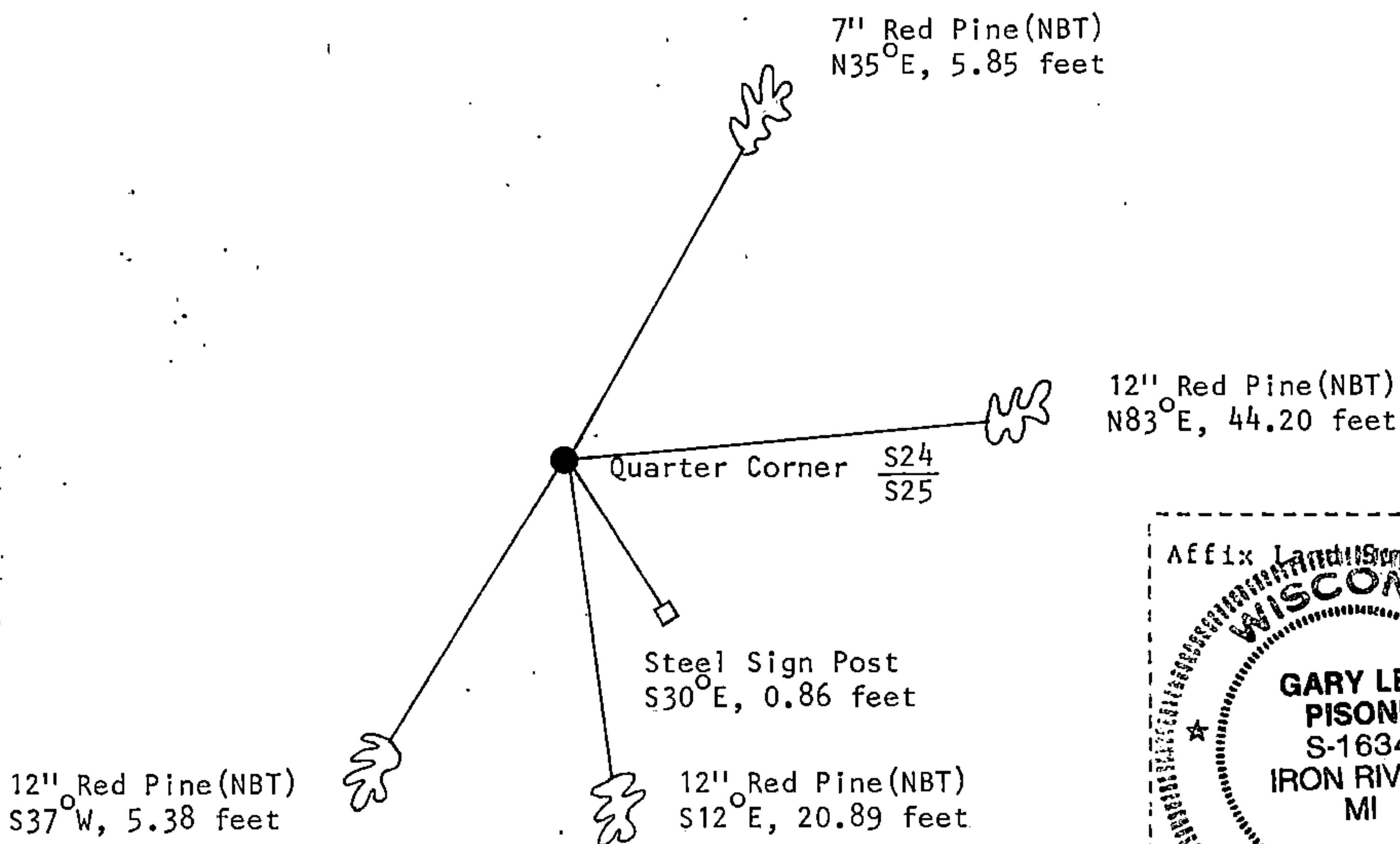
e) Describe any material discrepancy between the location of the corner as restored or reestablished and the location of that corner as previously restored or reestablished by distance and direction. Show the discrepancy on the plan view drawing under (d), above. Show the distances between the corner as previously restored or reestablished and (1) the corner as restored or reestablished, and (2) to at least 2 of the witness monuments shown on the drawing in (d), above.

See drawing below.

(f) Was the corner restored through acceptance of (1) an obliterated evidence location, or, (2) a found perpetuated location?

Restored from accepted evidence.

(g&h) Was the corner reestablished through lost corner proportionate methods? If so, show the method, including the directions and distances to other public land survey corners used as evidence or used for proportioning in determining the corner location?



(i) I, Gary L. Pisoni  
 (type or print name) certify that the corner location shown on this record was determined by me or under my direction and control and that this U.S. Public Land Survey Monument Record is correct and complete to the best of my knowledge and belief.

Signature Gary L. Pisoni Date 11/21/91

Survey requested by: M. Carr District Ranger Date 10/2/92