

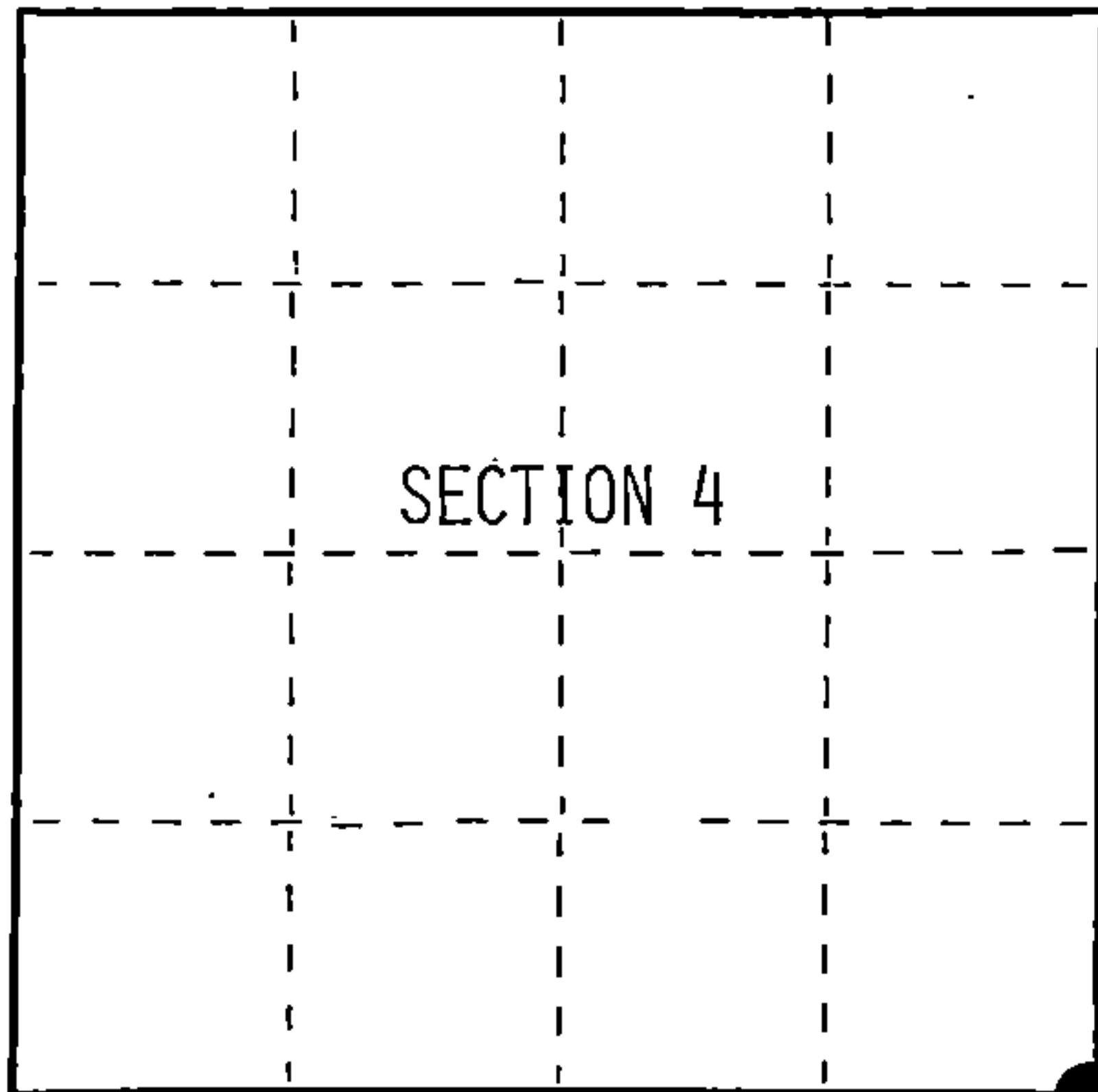
U.S. PUBLIC LAND SURVEY MONUMENT RECORD

Index No. E-13

State of Wisconsin }
County of Forest } ss.

I, William B. Cochrane, do hereby certify that on the 8th day of October, 1987, I found evidence of the Southeast Section corner of Section 4 Township 39 North, Range 13 East, Fourth Principal Meridian, as described hereon; and that from this evidence I established a new monument and accessories as described hereon to perpetuate the original location of this corner.

Resident witnesses:



○ = Corner monument restored.

History of original corner establishment:

Original Government Survey in 1865 by William E. Daugherty and Alex McDill.

Dependent Resurvey in 1978 by Gary L. Kratz and Michael J. Avery. From the remains of an original Hemlock bearing tree stump, set an aluminum post, 30 inches long, 2½ inches diameter, 1 inch below the surface, with a cap marked; T39N, R13E, S3, S4, S9, S10, 1978. Blazed and scribed the following new bearing trees;

Balsam	6"	N39°E	48 lks.	Balsam	6"	S68°W	28 lks.
Aspen	10"	S16°E	31 lks.	Balsam	8"	N30°W	54 lks.

Description of corner evidence found:

Found monument as described and in place, from which the following bear;

Aspen(Scribed) 13"	S16°E	20.46 feet
Balsam(Snag)(Scribed)	S68°W	18.90 feet
Hemlock(Stump)(Original)	S84°W	19.80 feet

Description of monument and accessories I established to perpetuate the original location of this corner.

Blazed and scribed the following new bearing trees;

Aspen	10"	N80°E	45.70 feet
Spruce	11"	S84°W	23.29 feet
Aspen	8"	N32°W	46.36 feet
Steel Sign Post		SW	3.70 feet

Dated at Hiles, Wis., this 15th day of October, 1987

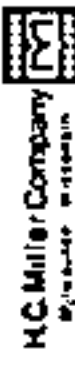
Signature William B. Cochrane Title Land Surveyor Registration No. S-1107
(County Surveyor, Registered Land Surveyor, or other duly authorized official)

Office of Register of Deeds, County of Forest, I hereby certify that the within instrument was filed in this office for record on the 18th day of March, 1988 at 12:50 o'clock P. M.

Paul Aschmussen
(Register of Deeds)

By Deputy

FORM NO. 985-A



Stock No. 26273

DOCUMENT NUMBER 134833

43913040000

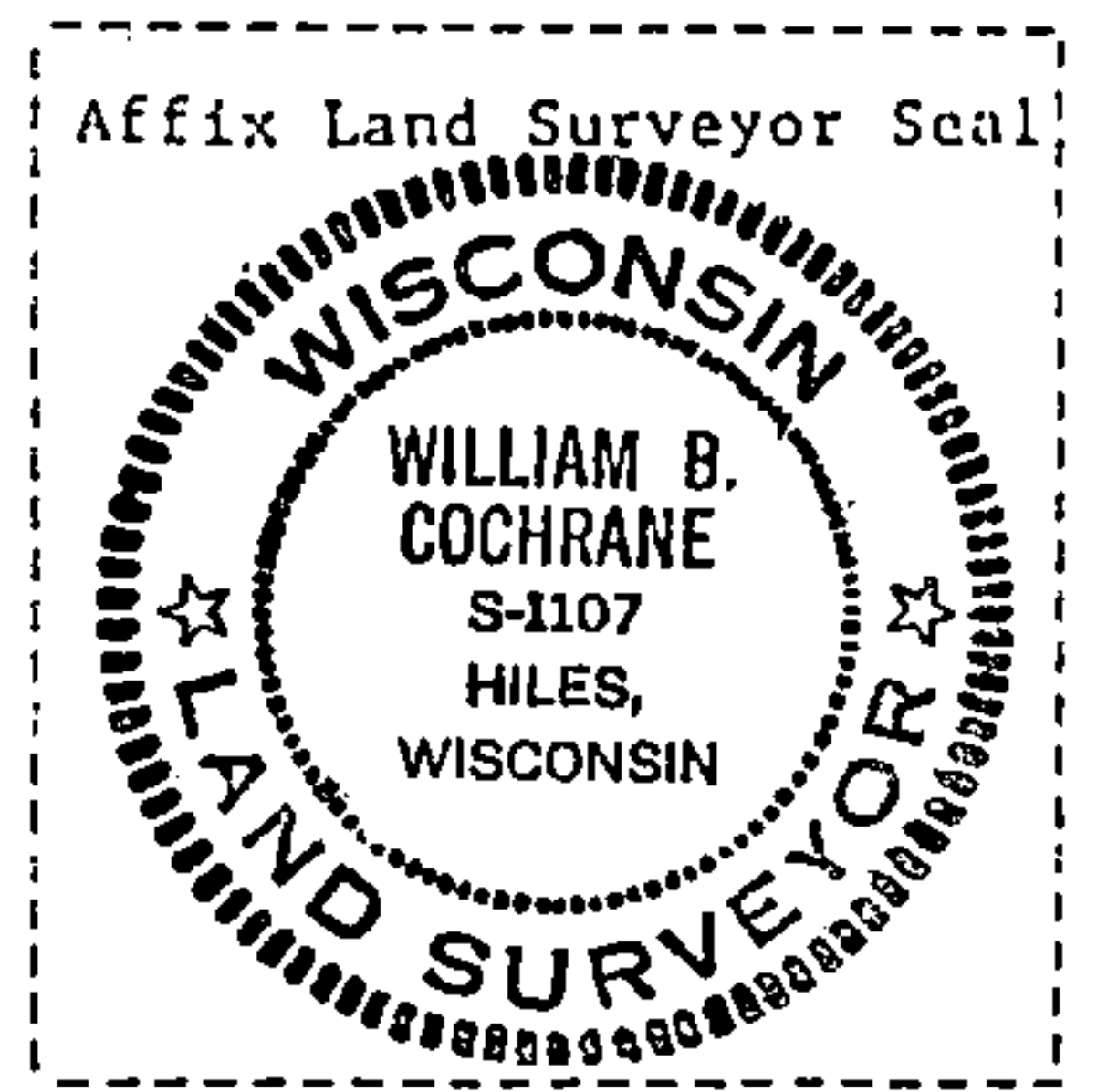
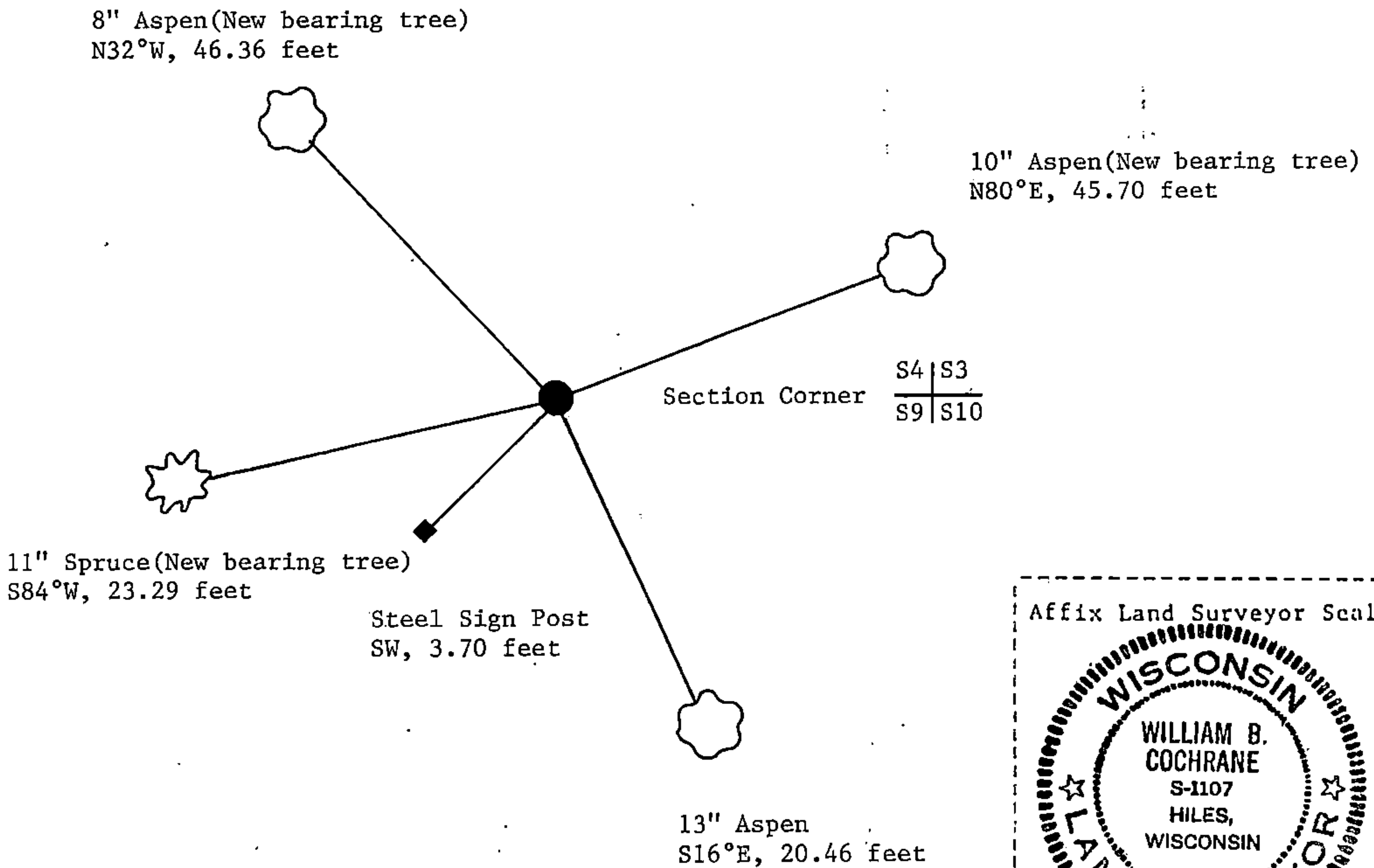
(e) Describe any material discrepancy between the location of the corner as restored or reestablished and the location of that corner as previously restored or reestablished by distance and direction. Show the discrepancy on the plan view drawing under (d), above. Show the distances between the corner as previously restored or reestablished and (1) the corner as restored or reestablished, and (2) to at least 2 of the witness monuments shown on the drawing in (d), above.

See drawing below.

(f) Was the corner restored through acceptance of (1) an obliterated evidence location, or, (2) a found perpetuated location?

Restored through acceptance of a found perpetuated location.

(g&h) Was the corner reestablished through lost corner proportionate methods? If so, show the method, including the directions and distances to other public land survey corners used as evidence or used for proportioning in determining the corner location?



(i) I, William B. Cochrane
 (type or print name) certify that the corner location shown on this record was determined by me or under my direction and control and that this U.S. Public Land Survey Monument Record is correct and complete to the best of my knowledge and belief.

William B. Cochrane Signature Jan. 12, 1988 Date

Survey requested by: Edward [Signature]
 District [Signature]