

U.S. PUBLIC LAND SURVEY MONUMENT RECORD

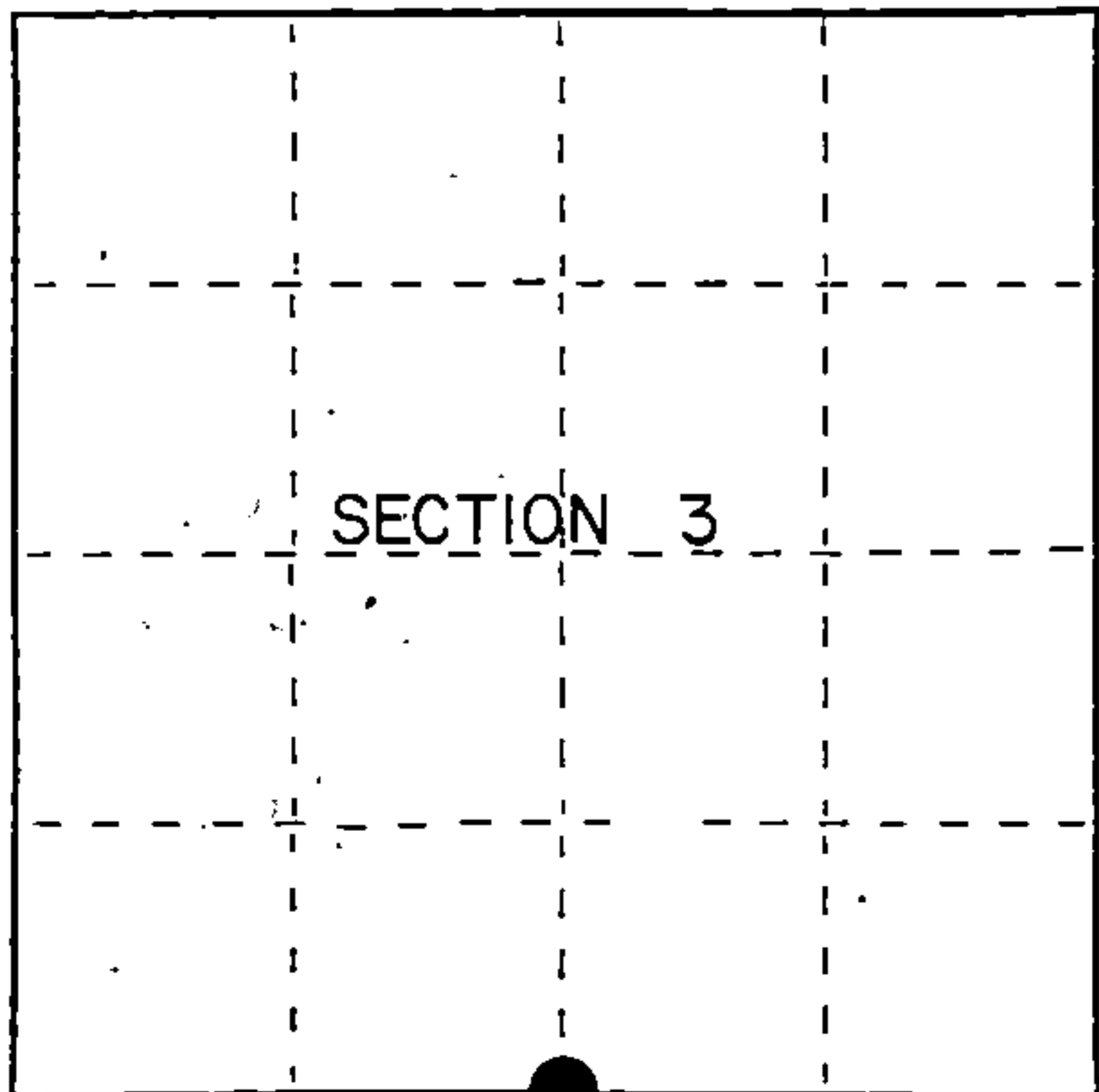
Index No. E-15

State of Wisconsin }
County of Forest } ss.

I, Gary L. Pisoni, do hereby certify that on the 20th day of July, 1990, I found evidence of the South Quarter corner of Section 3 Township 39 North, Range 13 East, Fourth Principal Meridian, as described hereon; and that from this evidence I established a new monument and accessories as described hereon to perpetuate the original location of this corner.

Resident witnesses:

.....
.....
.....



● = Corner monument restored.

History of original corner establishment:

Original Government Survey in 1865 by William E. Daugherty and Alex McDill. West corrected between Sections 3 and 10, at 40.15 chains, set Quarter Section Post to Sections 3 and 10. From which the following bear;

Fir 7" N27°E 11 lks.
Fir 8" S68°W 11 lks.

Description of corner evidence found:

No corner evidence was recovered.

Corner position is restored at proportionate distance and on line between the Southwest and Southeast Section Corners of Section 3.

Description of monument and accessories I established to perpetuate the original location of this corner.

At the corner position, set a 2½ inch diameter aluminum pipe monument, 3 feet long, 3 inches above the ground surface, with aluminum cap stamped; T39N, R13E, 1/4, S3, S10, 1990, S-1634. From which the following new blazed and scribed bearing trees bear; (measurements taken to a nail in side of tree)

Red Maple 14" N36°E 33.15 feet
Red Maple 8" S02°W 22.38 feet
Red Maple 4" S65°W 17.92 feet
Red Maple 13" N25°W 28.68 feet
Steel Sign Post East 0.55 feet

Dated at Iron River, MI, Wis, this 8th day of December, 1990

Signature Gary L. Pisoni Title Land Surveyor Registration No S-1634
(County Surveyor, Registered Land Surveyor, or other duly authorized official)

Office of Register of Deeds, County of Forest, I hereby certify that the within instrument was filed in this office for record on the 10th day of March, 1993 at 10:45 o'clock A.M.

Paul Aschenbrenner
(Register of Deeds)

By _____ Deputy

FORM NO. 985-A

H.C. Miller Company

Stock No. 26273

146910

43913030020

e) Describe any material discrepancy between the location of the corner as restored or reestablished and the location of that corner as previously restored or reestablished by distance and direction. Show the discrepancy on the plan view drawing under (d), above. Show the distances between the corner as previously restored or reestablished and (1) the corner as restored or reestablished, and (2) to at least 2 of the witness monuments shown on the drawing in (d), above.

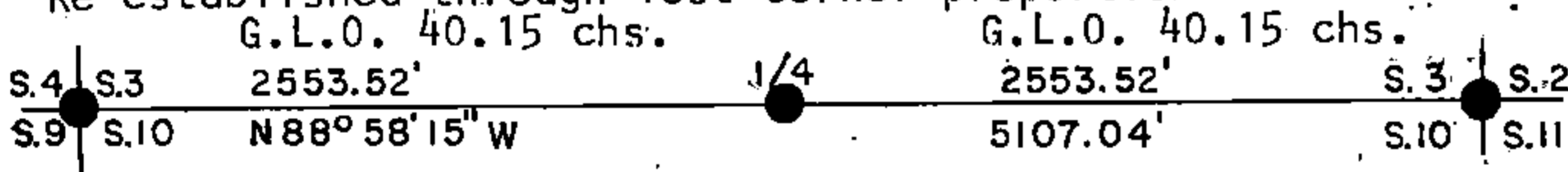
See drawing below.

(f) Was the corner restored through acceptance of (1) an obliterated evidence location, or, (2) a found perpetuated location?

Restored through lost corner proportionate methods.

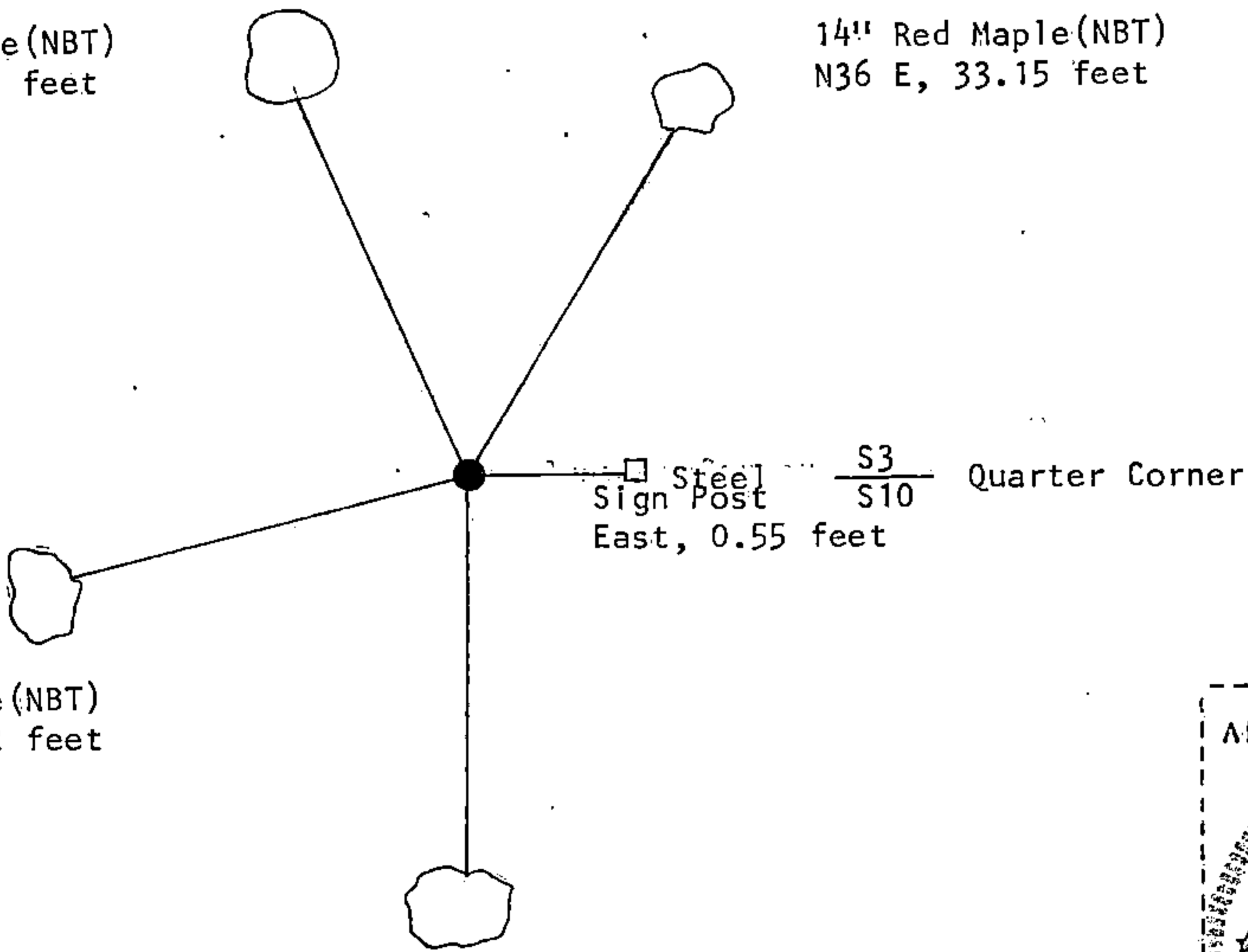
(g&h) Was the corner reestablished through lost corner proportionate methods? If so, show the method, including the directions and distances to other public land survey corners used as evidence or used for proportioning in determining the corner location?

Re-established through lost corner proportionate methods.



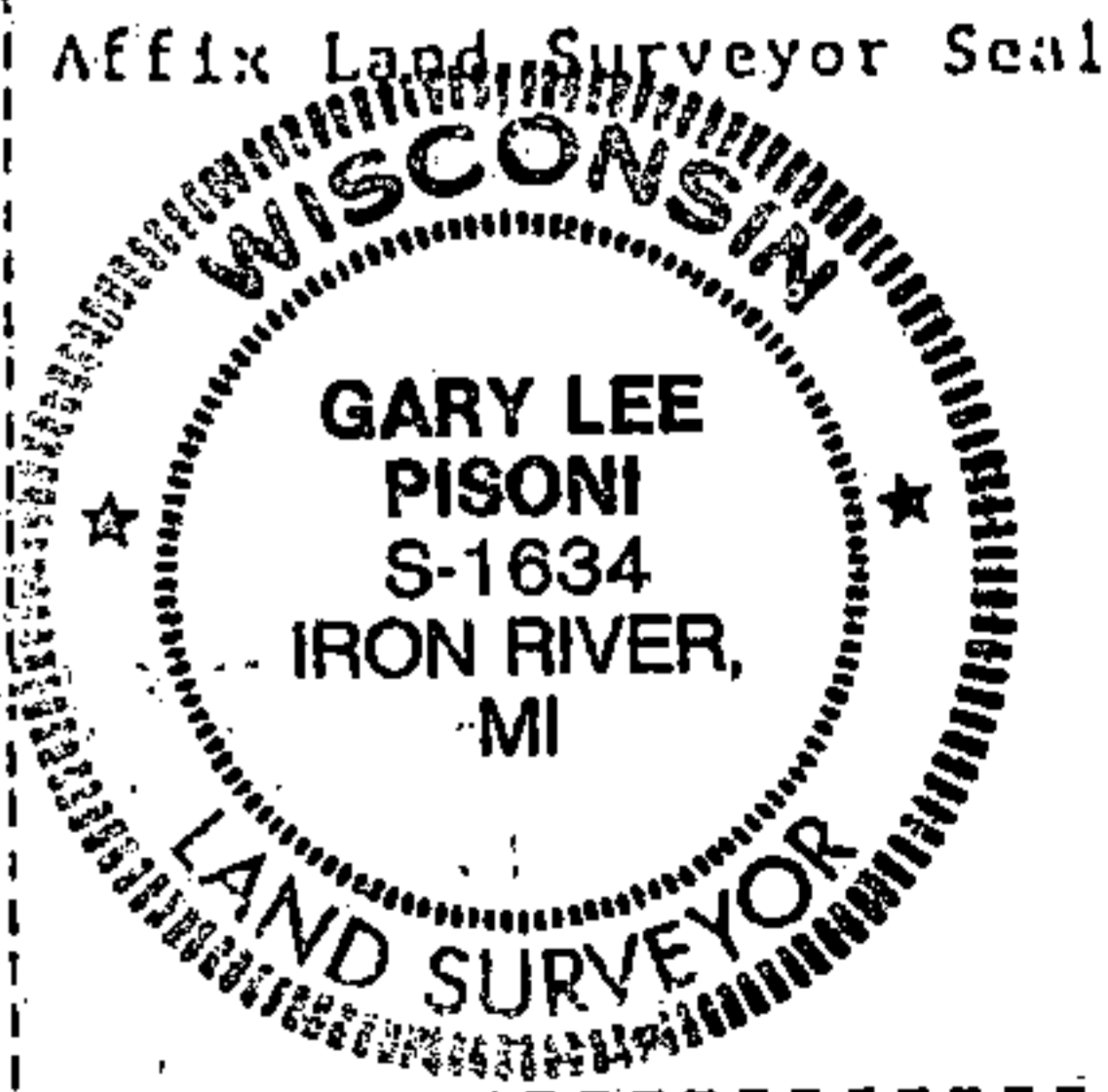
13" Red Maple (NBT)
N25 W, 28.68 feet

14" Red Maple (NBT)
N36 E, 33.15 feet



4" Red Maple (NBT)
S65 W, 17.92 feet

8" Red Maple (NBT)
S02 W, 22.38 feet



(i) I, Gary L. Pisoni (type or print name) certify that the corner location shown on this record was determined by me or under my direction and control and that this U.S. Public Land Survey Monument Record is correct and complete to the best of my knowledge and belief.

Signature Gary L. Pisoni Date 11/21/91

Survey requested by: Tom Gordon Date 12/15/92
District Ranger Date