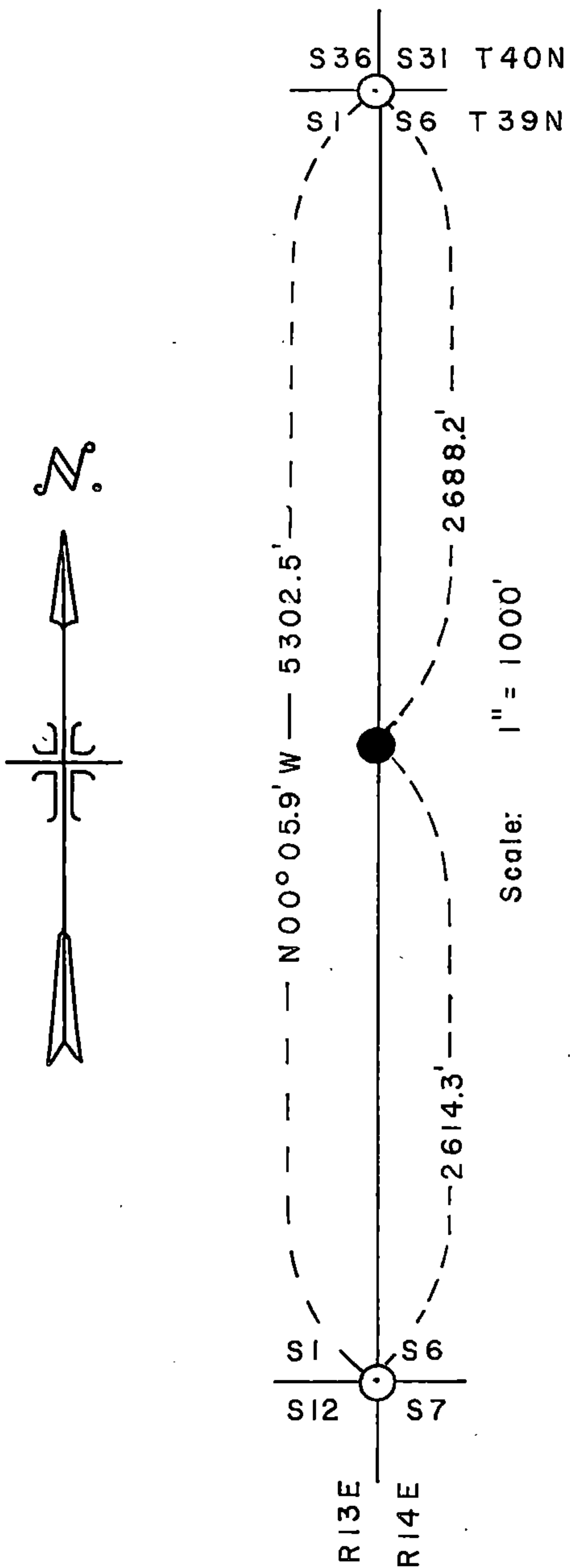


Stock No. 26273

### CERTIFIED LAND CORNER RESTORATION CERTIFICATE

BEING THE QUARTER CORNER BETWEEN SECTIONS 1 AND 6,  
TOWNSHIP 39 NORTH, RANGES 13 AND 14 EAST, FOURTH  
PRINCIPAL MERIDIAN, COUNTY OF FOREST, STATE OF WISCONSIN



#### LEGEND

- — 2 1/2 inch diameter aluminum pipe monument, 30 inches long with an aluminum cap stamped to identify the corner.
- — Corners monumented and recorded.

#### SURVEY NOTES

This survey of the line between the southwest section corner of Section 6 and the northwest section corner of Section 6, T39N, R14E, Fourth Principal Meridian was made by the U.S. Department of Agriculture, Forest Service.

The purpose of this survey is to restore the quarter corner between Sections 1 and 6, T39N, Ranges 13 and 14 East.

All bearings are true bearings referenced to solar observations.

DOCUMENT NO.

**119754**

REGISTER'S OFFICE }  
 Forest County, Wis. }  
 Received for record this 12 <sup>th</sup> day  
 of May A.D., 19 81 at  
2:30 o'clock P. M. and recorded  
 in Vol. \_\_\_\_\_ of CORNER  
 page C-1 RESTORATION  
*Eugene Stutzman*  
 Register of Deeds

439 13 01.2000

C  
1

Stock No. 26273

Sheet 2 of 2 (C-1)

CORNERS RECOVERED

1. Section Corner Common to Sections 1,6,7 and 12, Ranges 13 and 14 East.

Recorded on a previous Restoration Certificate.

2. Section Corner Common to Sections 1,6,31 and 36, Townships 39 and 40 North, Ranges 13 and 14 East.

Recorded as document number 108556, January 14, 1976.

CORNER RESTORED

1. Quarter Corner Between Sections 1 and 6, Ranges 13 and 14 East.

Restored the quarter corner by single proportion on line between the southwest section corner and northwest section corner of Section 6.

## Corner References:

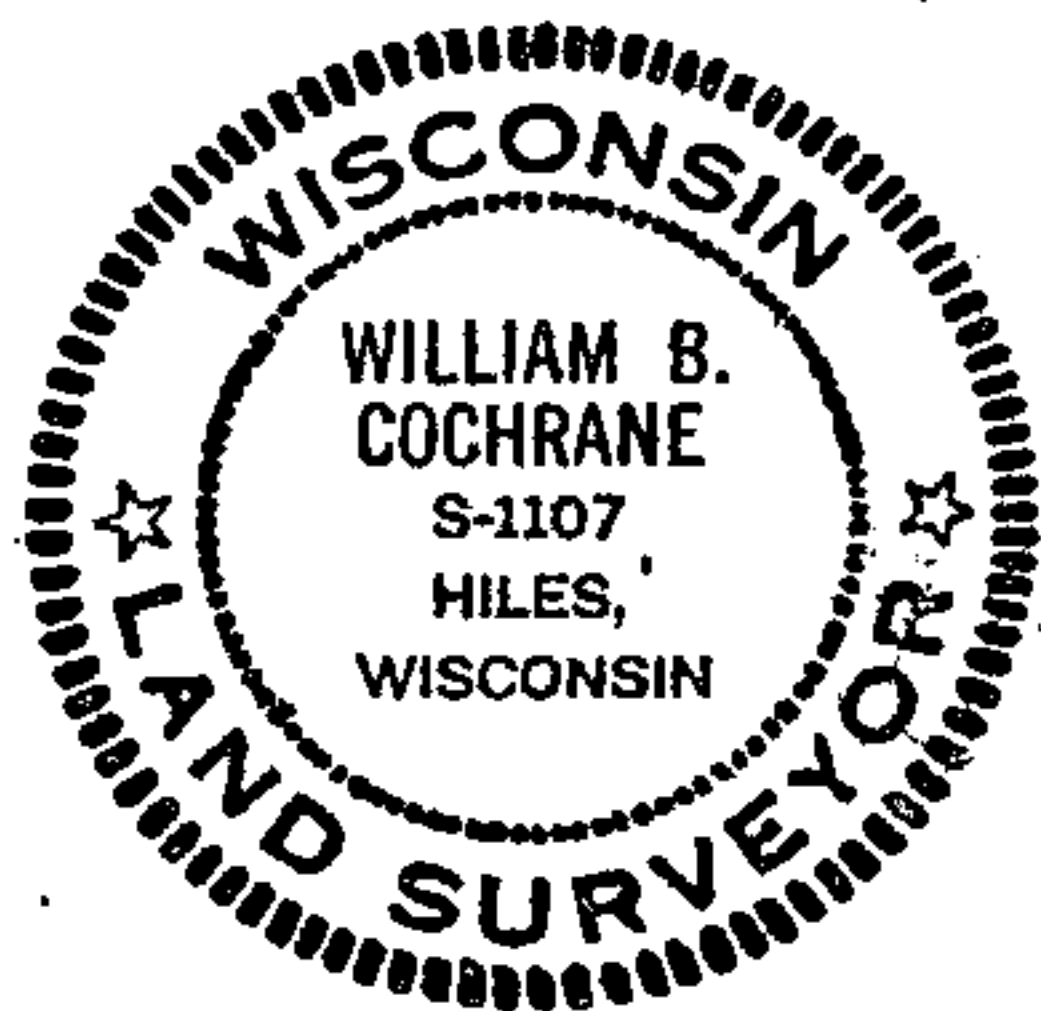
Maple	8"	S49°W	18.30 ft.
Maple	10"	N54°W	16.97 ft.
Steel Sign Post		East	0.50 ft.

SURVEYOR'S AFFIDAVIT

State of Wisconsin)  
County of Forest ) ss

I, William B. Cochrane, Land Surveyor, U.S. Forest Service and a Registered Land Surveyor in the State of Wisconsin, hereby certify that I have surveyed the line between the southwest section corner and the northwest section corner of Section 6, Township 39 North, Range 14 East, Fourth Principal Meridian, State of Wisconsin.

The plat map and the survey notes are a correct representation of the corners recovered and corner established.



*William B. Cochrane*  
Land Surveyor, U.S. Forest Service  
R.L.S. State of Wisconsin  
Certificate S-1107

Date of Survey: 1981

U.S. PUBLIC LAND SURVEY MONUMENT RECORD

Index No. G-25

State of Wisconsin }  
County of Forest } ss.

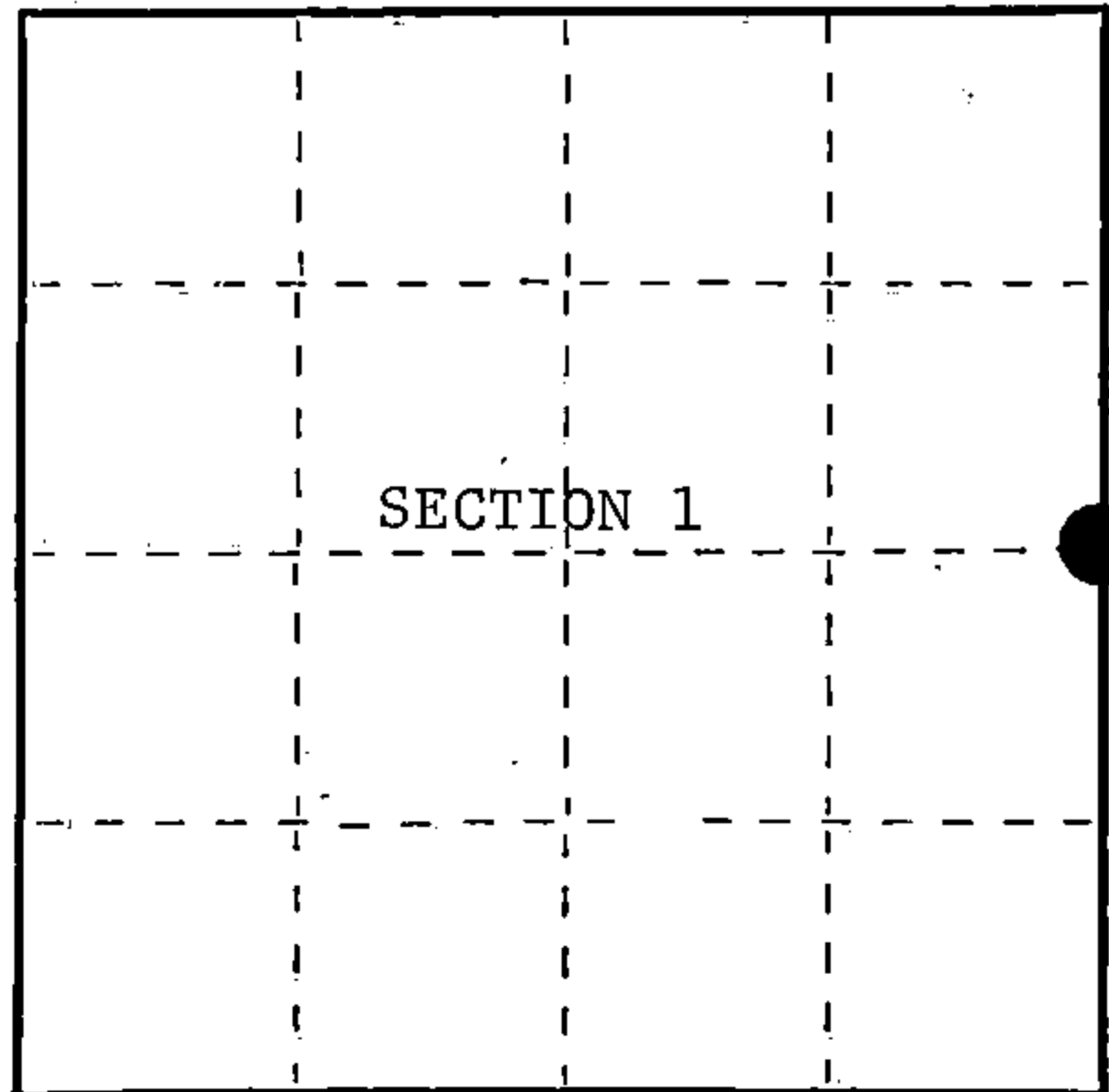
I, William B. Cochrane, do hereby certify that on the 29th day of August, 1985, I found evidence of the East Quarter corner of Section 1 Township 39 North, Range 13 East, Fourth Principal Meridian, as described hereon; and that from this evidence I established a new monument and accessories as described hereon to perpetuate the original location of this corner.

Resident witnesses:

David Brownell

Tony Tillman

State Plane Co-ordinates  
N- 265,548.6270  
E-2,305,671.9480



○ = Corner monument restored.

History of original corner establishment:

Original Government Survey in 1858 by Artemas Curtis.

Corner restored on August 29th, 1981, by William B. Cochrane, a Registered Land Surveyor with the U.S. Forest Service.

See Certified Land Corner Restoration Certificate #119754, filed in the Registrar of Deeds Office in the Forest County Courthouse.

Description of corner evidence found:

Found monument as described and in place, from which the following bear;

Maple	8"	S49°W	18.30 feet
Maple	10"	N54°W	16.97 feet
Steel Sign Post		East	0.50 feet

Description of monument and accessories I established to perpetuate the original location of this corner.

Blazed and scribed the following new bearing trees;

Maple	8"	N10°E	84.45 feet
Maple	9"	S86°E	62.79 feet

Re-set Steel Sign Post NW 2.00 feet

Dated at Hiles, Wis., this 11th day of February, 1987

Signature: William B. Cochrane Title: Land Surveyor Registration No. S-1107  
(County Surveyor, Registered Land Surveyor, or other duly authorized official)

Office of Register of Deeds, County of Forest, I hereby certify that the within instrument was filed in this office for record on the 11th day of March, 1987 at 3:30 o'clock P.M.

Paul Aschenbrenner  
(Register of Deeds)

By \_\_\_\_\_ Deputy

FORM NO. 985-A

H.C. Miller Company  
Madison, Wisconsin

Stock No. 26273

DOCUMENT NUMBER 132299

43913012000

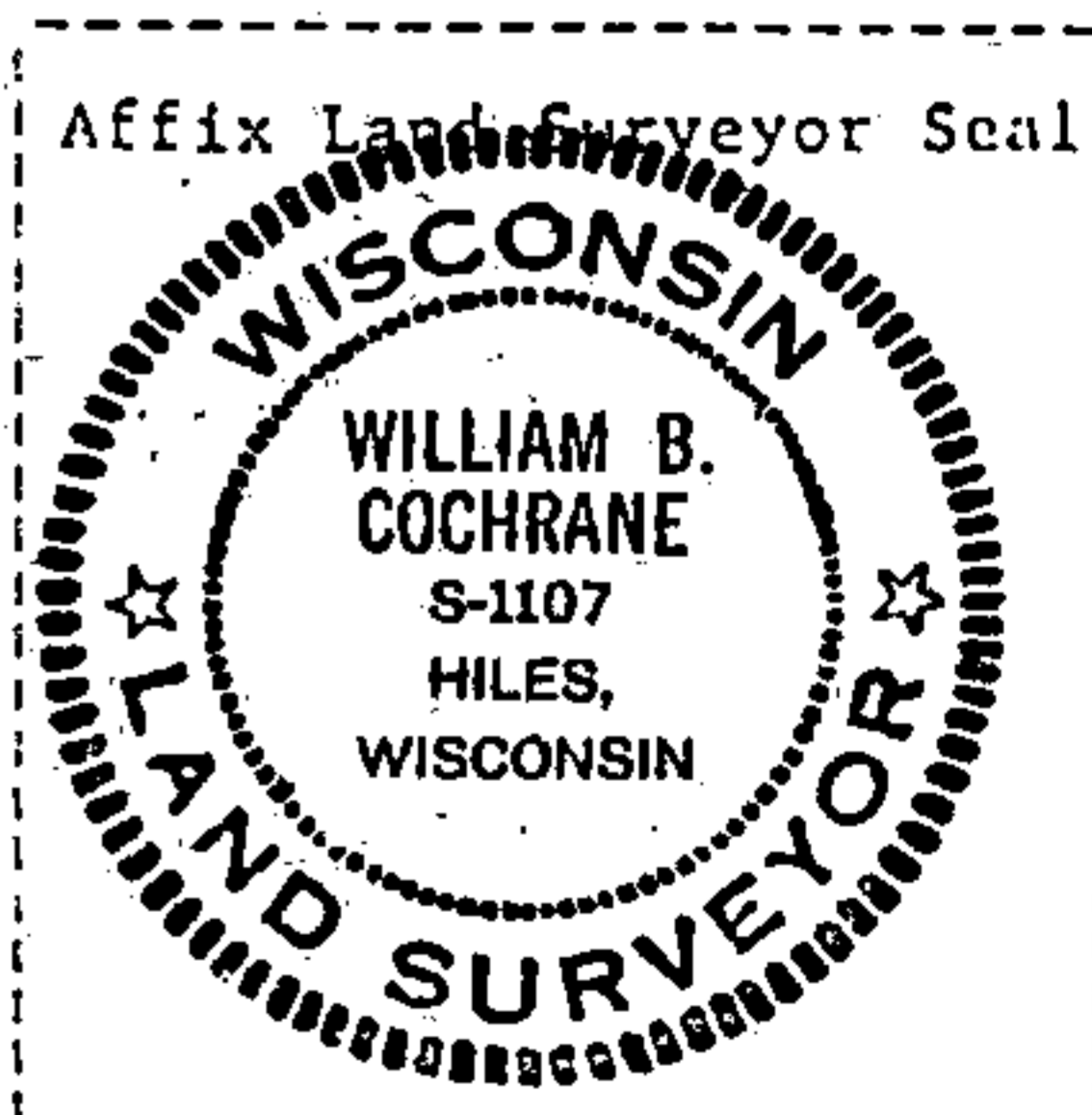
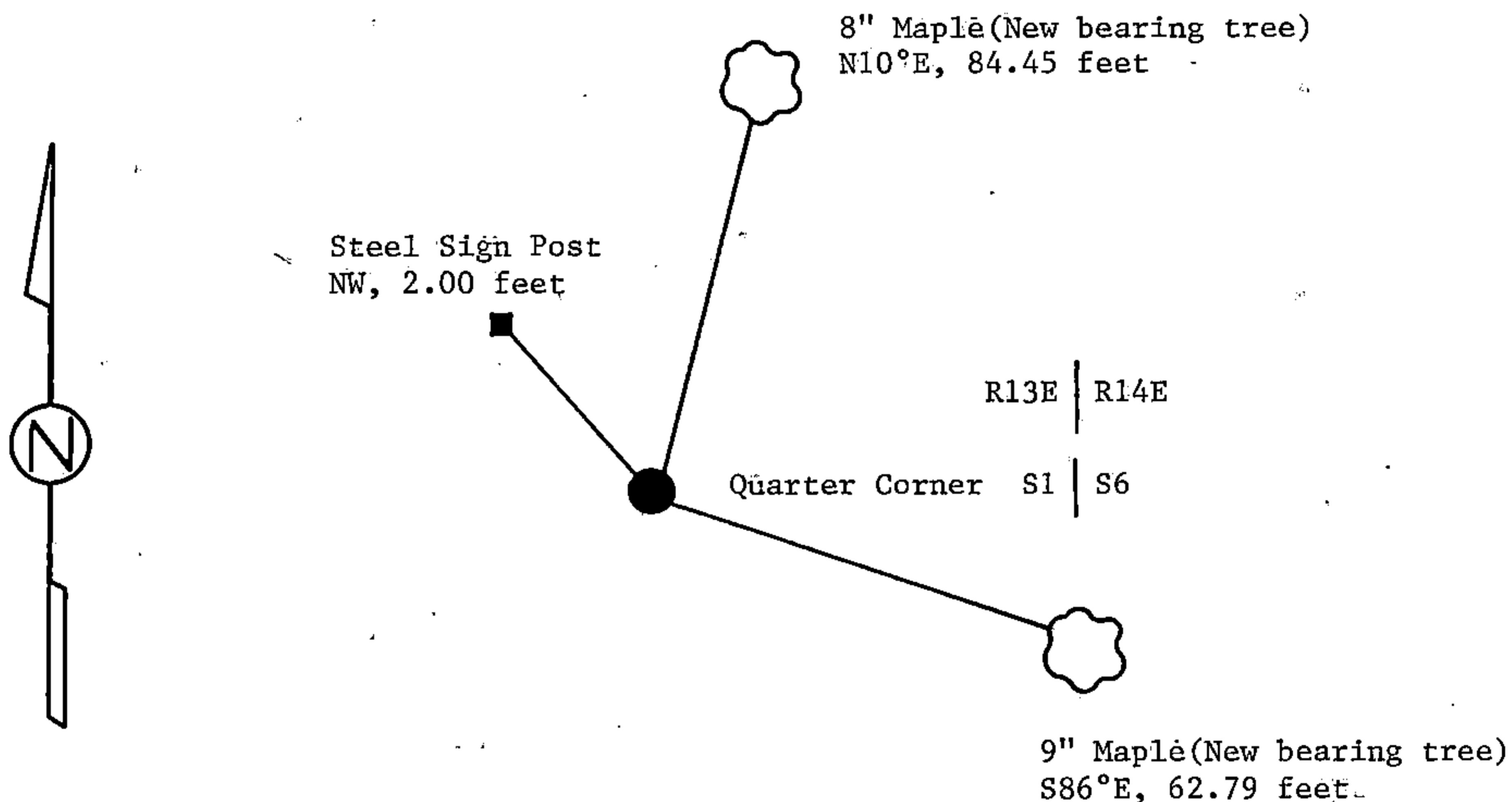
(e) Describe any material discrepancy between the location of the corner as restored or reestablished and the location of that corner as previously restored or reestablished by distance and direction. Show the discrepancy on the plan view drawing under (d), above. Show the distances between the corner as previously restored or reestablished and (1) the corner as restored or reestablished, and (2) to at least 2 of the witness monuments shown on the drawing in (d), above.

See drawing below.

(f) Was the corner restored through acceptance of (1) an obliterated evidence location, or, (2) a found perpetuated location?

Restored through acceptance of a found perpetuated location.

(g&h) Was the corner reestablished through lost corner proportionate methods? If so, show the method, including the directions and distances to other public land survey corners used as evidence or used for proportioning in determining the corner location?



(i) I, William B. Cochrane  
(type or print name) certify that the corner location shown on this record was determined by me or under my direction and control and that this U.S. Public Land Survey Monument Record is correct and complete to the best of my knowledge and belief.

William B. Cochrane February 11, 1987  
Signature Date

Survey requested by: [Signature] 3-9-87  
District Ranger Date

U.S. PUBLIC LAND SURVEY MONUMENT RECORD

Index No. C-1

State of Wisconsin }  
County of Forest } ss.

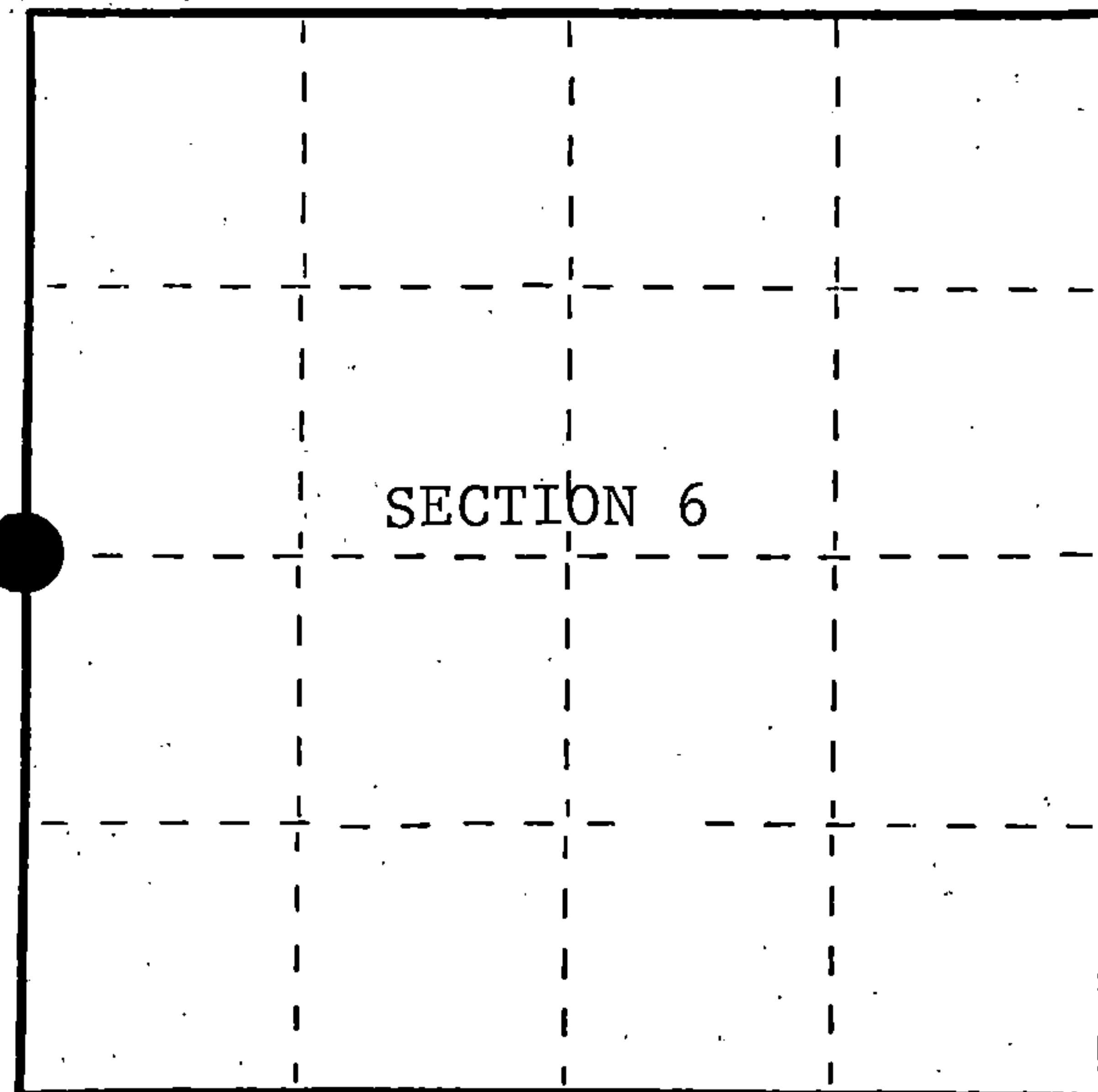
I, William B. Cochran, do hereby certify that on the 29th day of August, 1985, I found evidence of the West Quarter corner of Section 6 Township 39 North, Range 14 East, Fourth Principal Meridian, as described hereon; and that from this evidence I established a new monument and accessories as described hereon to perpetuate the original location of this corner.

Resident witnesses:

David Brownell

Tony Tillman

State Plane Co-ordinates  
N- 265,548.6270  
E-2,305,671.9480



○ = Corner monument restored.

History of original corner establishment:

Original Government Survey in 1858 by Artemas Curtis.

Corner restored on August 29th, 1981, by William B. Cochran, a Registered Land Surveyor with the U.S. Forest Service.

See Certified Land Corner Restoration Certificate #119754, filed in the Registrar of Deeds Office in the Forest County Courthouse.

Description of corner evidence found:

Found monument as described and in place, from which the following bear;

Maple	8"	S49°W	18.30 feet
Maple	10"	N54°W	16.97 feet
Steel Sign Post		East	0.50 feet

All of the above bearing trees were cut down for the Aerial Photo Project.

Description of monument and accessories I established to perpetuate the original location of this corner.

Blazed and scribed the following new bearing trees;

Maple	8"	N10°E	84.45 feet
Maple	9"	S86°E	62.79 feet

Re-set Steel Sign Post NW 2.00 feet

Dated at Hiles, Wis., this 11th day of February, 1987

Signature *William B. Cochran* Title Land Surveyor Registration No. S-1107  
(County Surveyor, Registered Land Surveyor, or other duly authorized official)

Office of Register of Deeds, County of Forest, I hereby certify that the within instrument was filed in this office for record on the 11th day of March, 1987 at 3:30 o'clock P. M.

*Paul Aschenbrenner*  
(Register of Deeds)

By \_\_\_\_\_ Deputy

FORM NO. 985-A

H.C. Miller Company  
Madison, Wisconsin

Stock No. 26273

DOCUMENT NUMBER 132317

4 3913012000

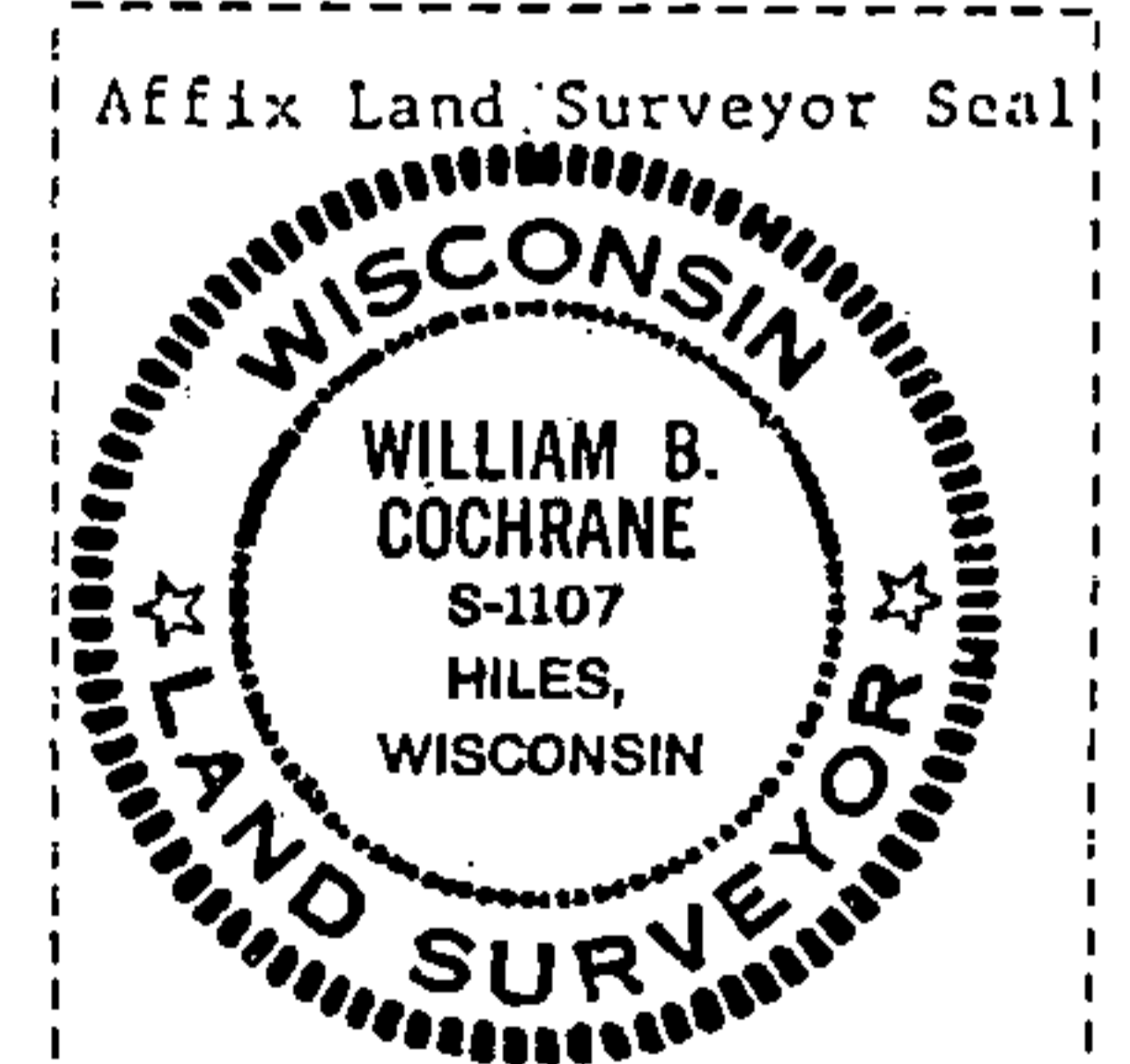
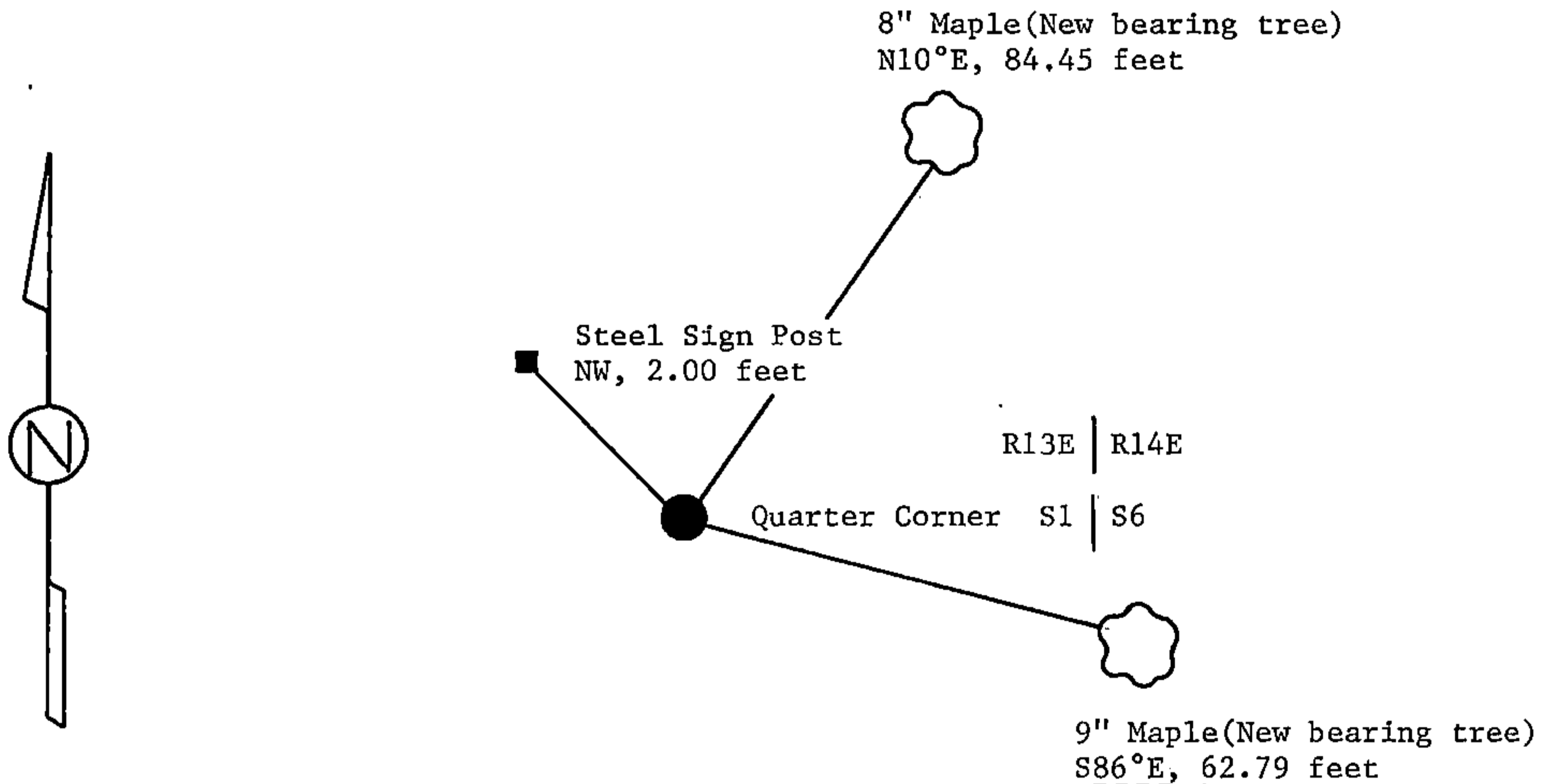
(e) Describe any material discrepancy between the location of the corner as restored or reestablished and the location of that corner as previously restored or reestablished by distance and direction. Show the discrepancy on the plan view drawing under (d), above. Show the distances between the corner as previously restored or reestablished and (1) the corner as restored or reestablished, and (2) to at least 2 of the witness monuments shown on the drawing in (d), above.

See drawing below.

(f) Was the corner restored through acceptance of (1) an obliterated evidence location, or, (2) a found perpetuated location?

Restored through acceptance of a found perpetuated location.

(g&h) Was the corner reestablished through lost corner proportionate methods? If so, show the method, including the directions and distances to other public land survey corners used as evidence or used for proportioning in determining the corner location?



(i) I, William B. Cochrane  
 (type or print name) certify that the corner location shown on this record was determined by me or under my direction and control and that this U.S. Public Land Survey Monument Record is correct and complete to the best of my knowledge and belief.

William B. Cochrane February 11, 1987  
 Signature Date

Survey requested by: [Signature] 3-9-87  
 District Ranger Date