

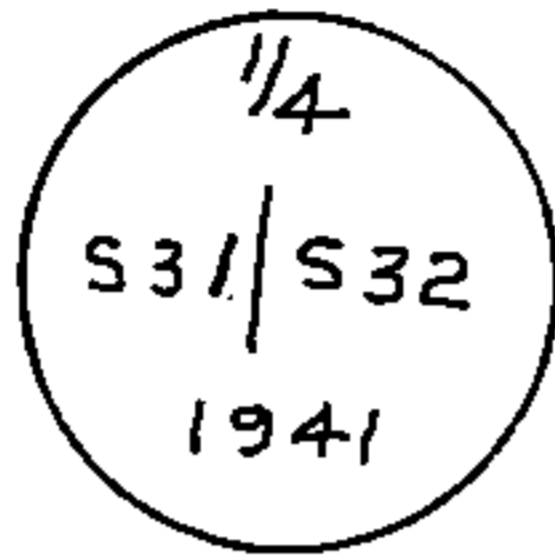
U.S. PUBLIC LAND SURVEY MONUMENT RECORD

Index No. X-3

State of Wisconsin }
County of Forest } ss.

History of original corner establishment: Original survey by William E. Daugherty. Dependent resurvey in 1941 by H.D. Craig, at 39.83 proportionate distance, set concrete monument 24 inches long, 6 inch diameter, 18 inches in the ground with iron post, 23 inches long, 1 inch diameter, embedded in center with brass cap stamped.

I John H. Fisher, do hereby certify that on the 28 day of January, 1985, I found evidence of the Quarter corner of Section 31 and 32 Township 39, North, Range 12 East, Fourth Principal Meridian, as described hereon; and that from this evidence I established a new monument and accessories as described hereon to perpetuate the original location of this corner.



From which the following bear:

Poplar	6"	N43°W	28 lks
Poplar	5"	S40-1/2°E	28 lks

Description of corner evidence found:
B.L.M. Monument as described above

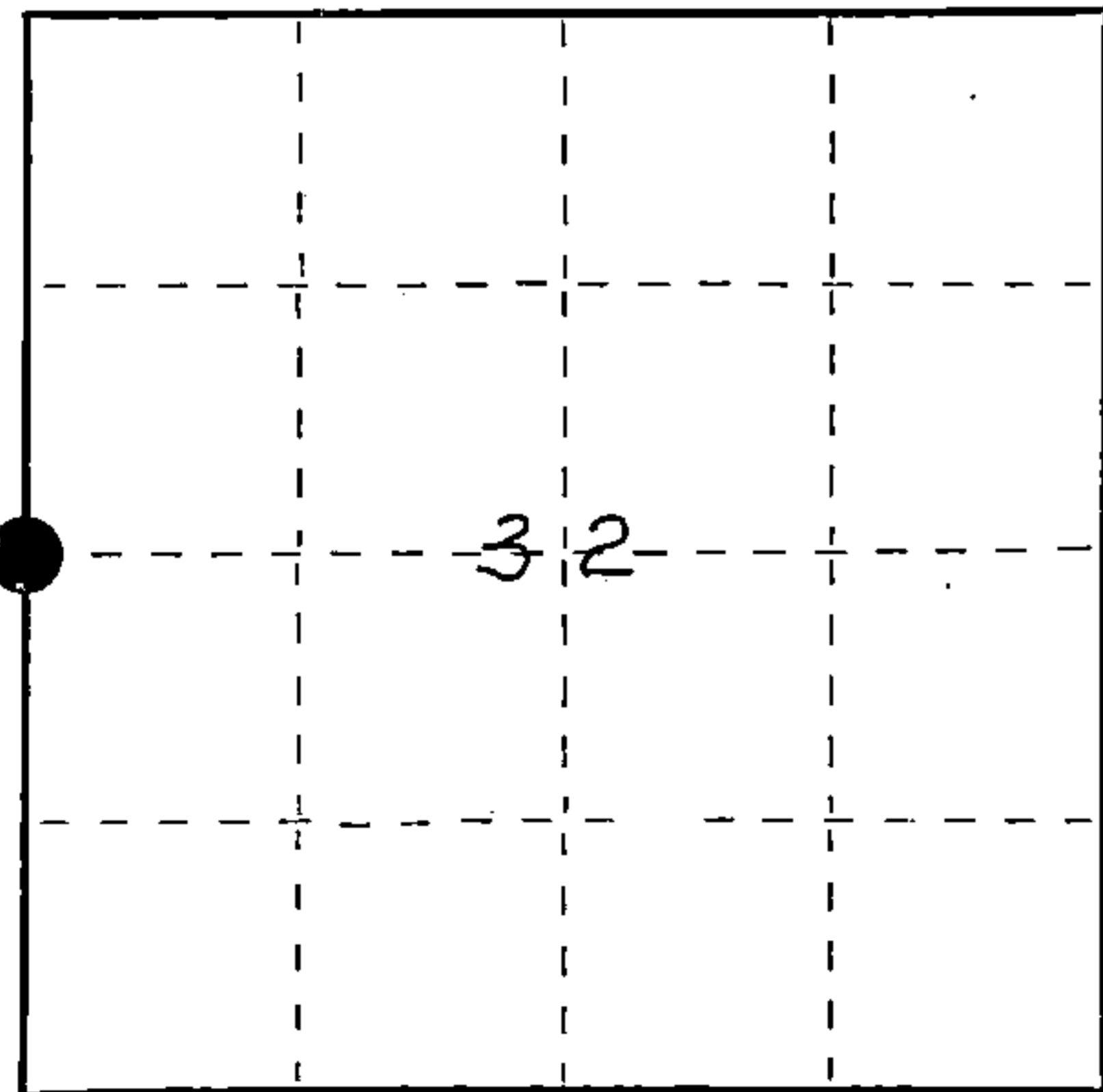
Red Pine	9"	S63°30'W	38.5 feet
Maple	9"	N28°E	22.0 feet
Wood sign post		S30°E	1.4 feet

Resident witnesses:

None

Description of monument and accessories I established to perpetuate the original location of this corner.
Blazed and scribed the following new bearing trees:

Red Pine	8"	S27°W	38.1 feet
Spruce	8"	S80°E	11.7 feet



○ = Corner monument restored.

Dated at Minocqua, Wis., this 21st day of March, 1985

Signature John H. Fisher Title Registered Land Surveyor Registration No. S-836
(County Surveyor, Registered Land Surveyor, or other duly authorized official)

Office of Register of Deeds, County of Forest, I hereby certify that the within instrument was filed in this office for record on the 24th day of July, 1985 at 1:10 o'clock P. M.

Paul Aschenbrenner
(Register of Deeds)

By.....Deputy

FORM NO. 985-A

H.C. Miller Company

Stock No. 26273

128453

DOCUMENT NUMBER

43912312090

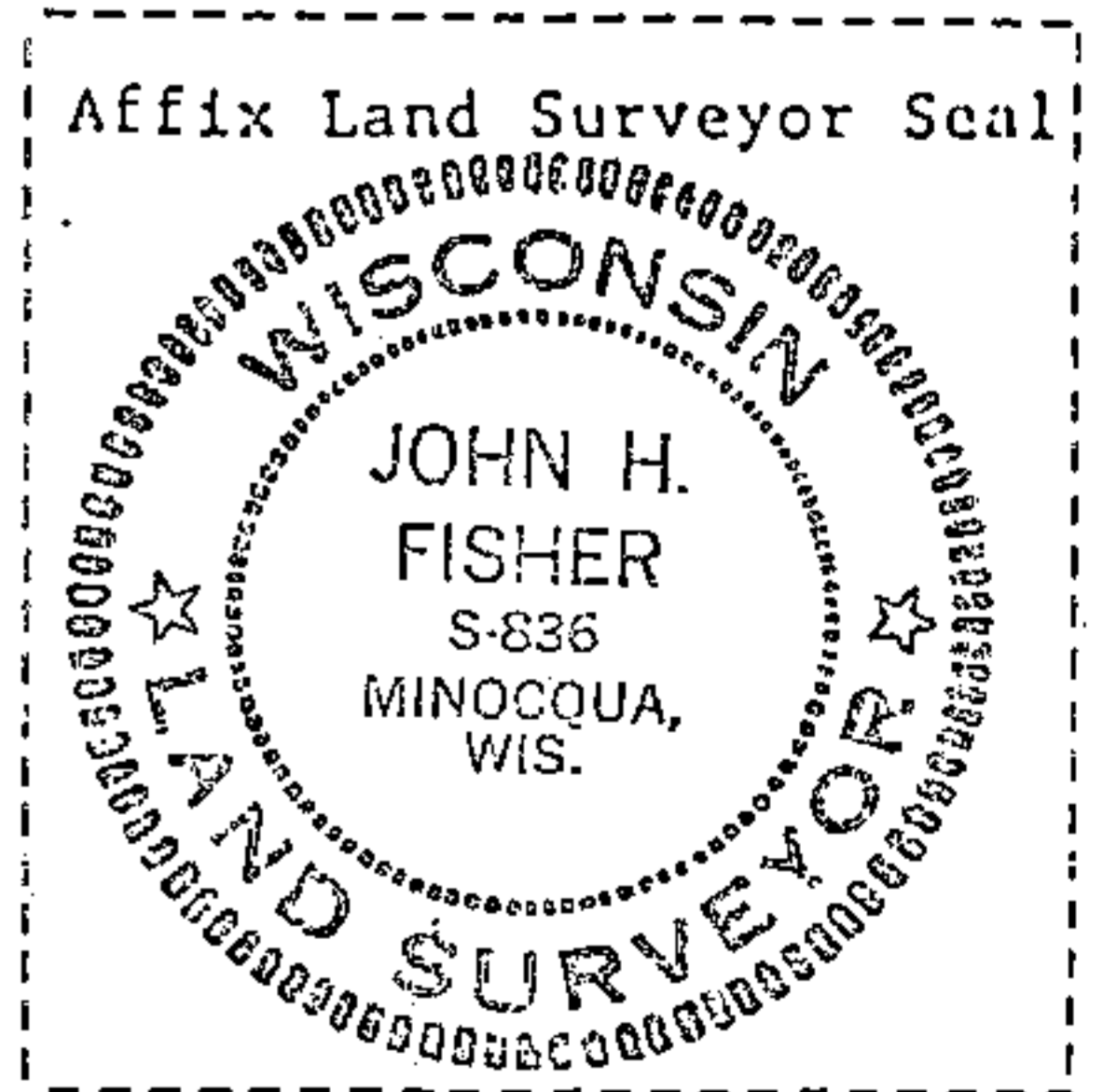
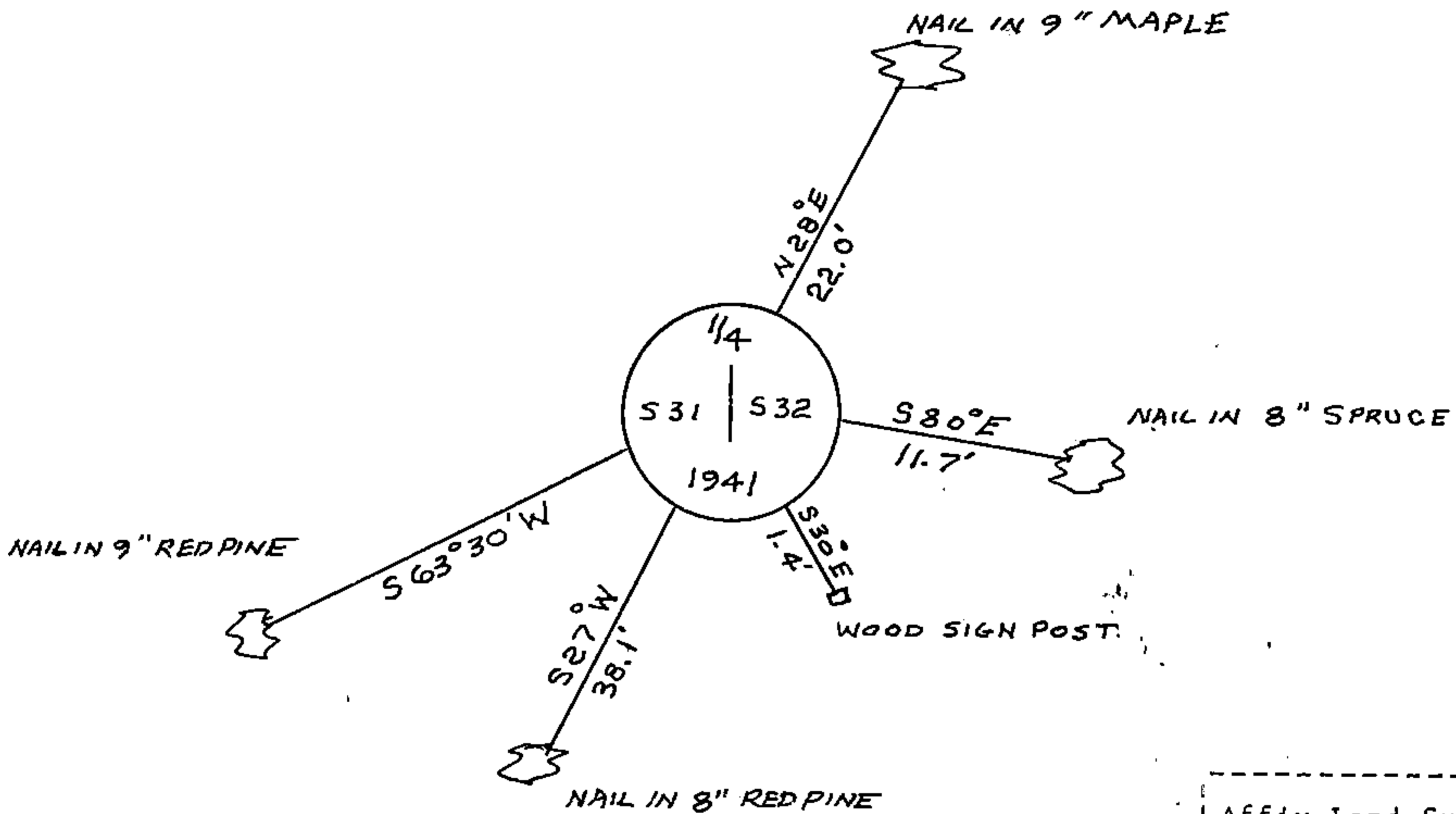
(e) Describe any material discrepancy between the location of the corner as restored or reestablished and the location of that corner as previously restored or reestablished by distance and direction. Show the discrepancy on the plan view drawing under (d), above. Show the distances between the corner as previously restored or reestablished and (1) the corner as restored or reestablished, and (2) to at least 2 of the witness monuments shown on the drawing in (d), above.

See drawing below

(f) Was the corner restored through acceptance of (1) an obliterated evidence location, or, (2) a found perpetuated location?

Found perpetuated location

(g&h) Was the corner reestablished through lost corner proportionate methods? If so, show the method, including the directions and distances to other public land survey corners used as evidence or used for proportioning in determining the corner location?



(i) I, John H. Fisher
 (type or print name) certify that the corner location shown on this record was determined by me or under my direction and control and that this U.S. Public Land Survey Monument Record is correct and complete to the best of my knowledge and belief.

John H. Fisher
 Signature

3/21/85
 Date