

U.S. PUBLIC LAND SURVEY MONUMENT RECORD

Index No. R-1

State of Wisconsin }  
County of Forest } ss.

I, Milo E. Stefan, do hereby certify that on the 1st day of October, 1988, I found evidence of the Section corner of Sections 19, 24, 25 & 30 Township 39 North, Range 11 & 12 East, Fourth Principal Meridian, as described hereon; and that from this evidence I established a new monument and accessories as described hereon to perpetuate the original location of this corner.

Resident witnesses:

Myron L. Smith

Jeffrey L. Kennedy

History of original corner establishment:

By Alfred Millard in 1858.

1926, Guy Veal restored corner from remains of an original BT. He set a 2" x 36" iron pipe monument for corner. Made a mound of stone west of corner and two BTs:

5" Spruce, S75 1/4°E, 175 links (115.50')

6" Spruce, S7 1/2°W, 340 links (224.40')

Description of corner evidence found:

Brass cap on iron pipe in good condition.

Very decayed stump, S7 1/2°W, 224'

Mound of stone west of monument.

Description of monument and accessories I established to perpetuate the original location of this corner.

We made four new BTs and set steel sign post:

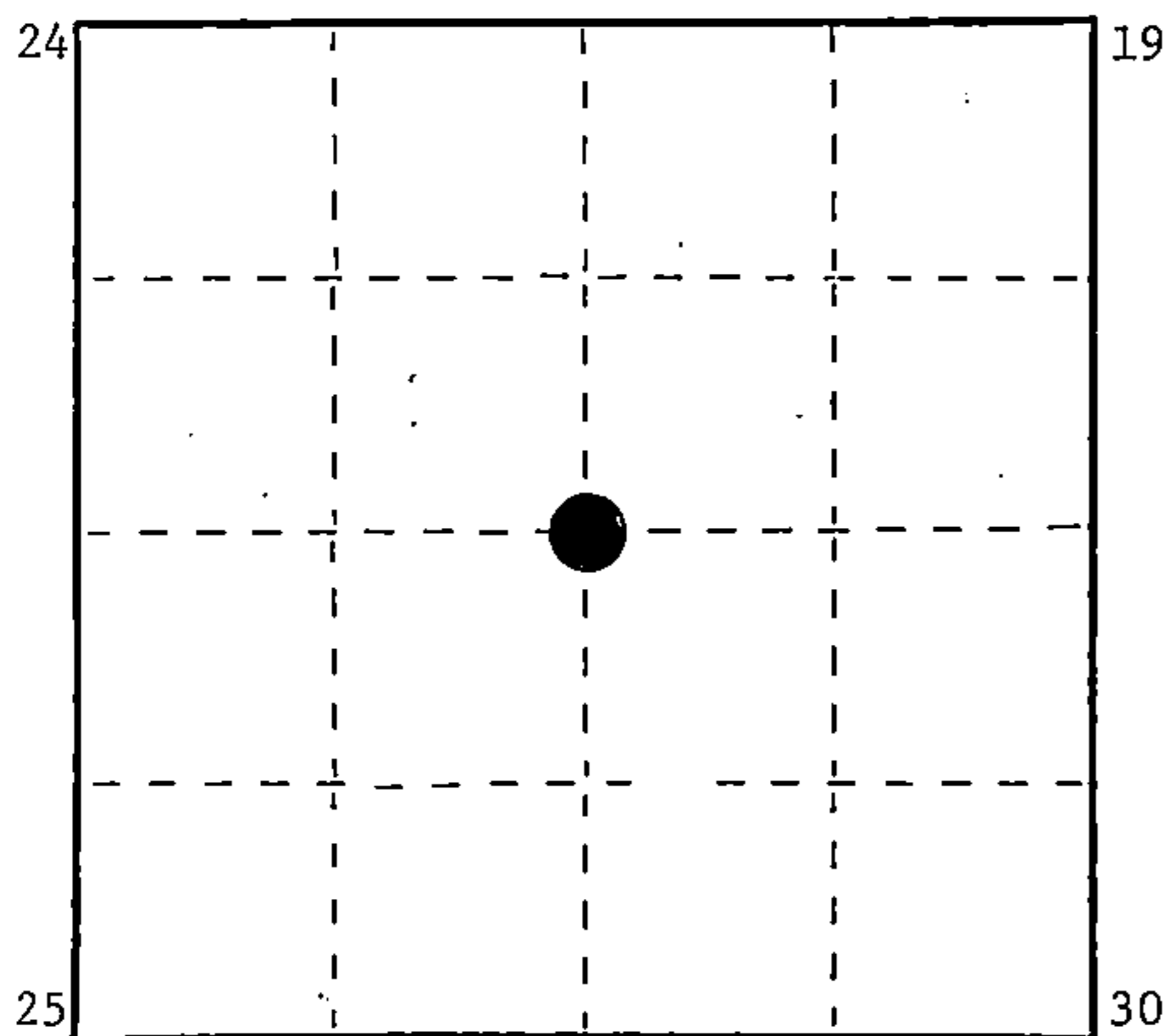
6" Jack Pine, N77°E, 39.27'

10" Jack, Pine, S1°E, 30.50'

8" Jack Pine, S83°W, 15.60'

4" Jack Pine, N25°W, 59.73'

6' Steel Sign Post, Northeast, 1.7'



○ = Corner monument restored.

Dated at Crandon, Wis., this 15th day of November, 1988

Signature: Milo E. Stefan Title: Land Surveyor Registration No. S-1558  
(County Surveyor, Registered Land Surveyor, or other duly authorized official)

Office of Register of Deeds, County of Forest, I hereby certify that the within instrument was filed in this office for record on the 7th day of March, 1989 at 9:55 o'clock A. M.

Paul Aschenbrenner  
(Register of Deeds)

By: Sandra L. Neddo Deputy

FORM NO. 985-A  
K.C. Miller Company

Stock No. 26273

DOCUMENT NUMBER

137020

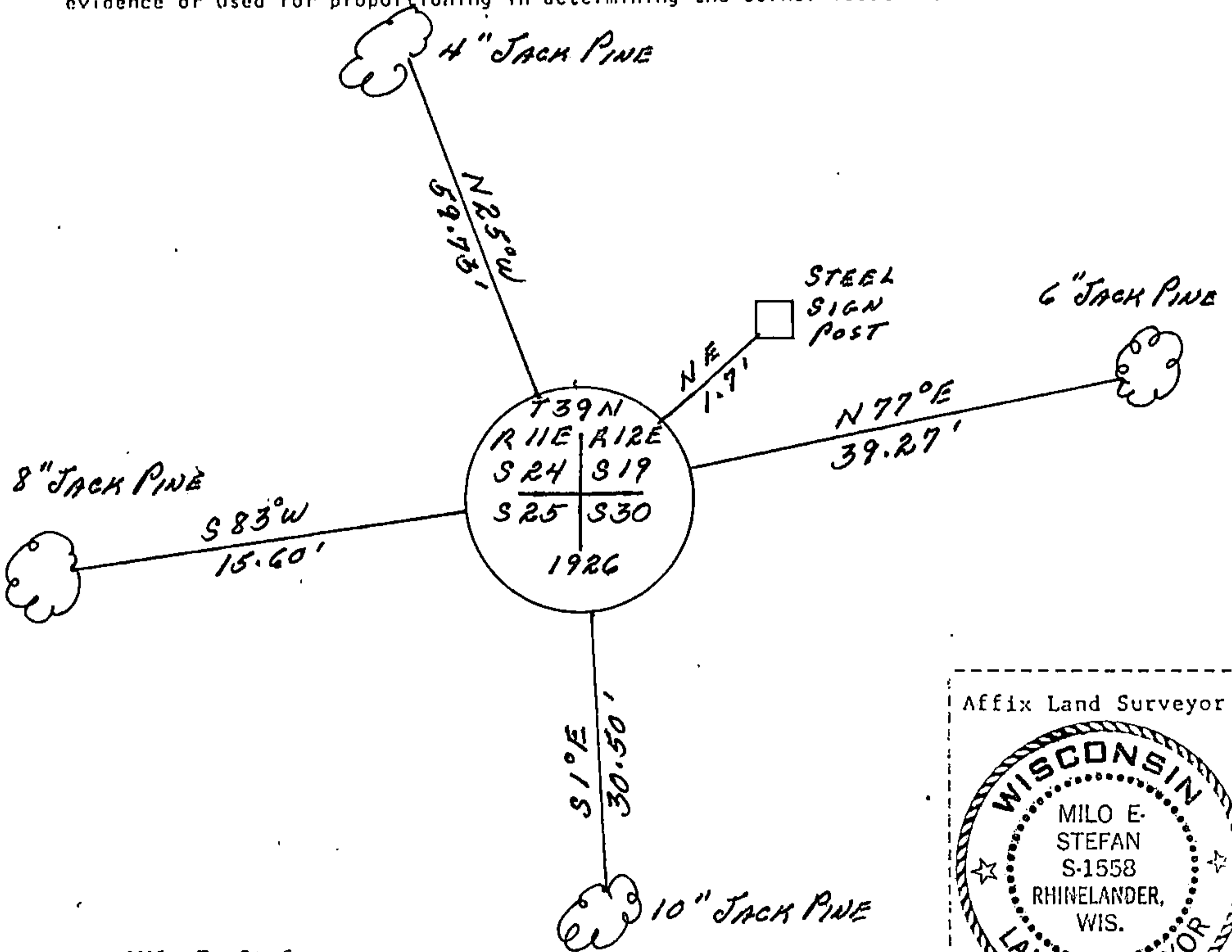
43911240000

(e) Describe any material discrepancy between the location of the corner as restored or reestablished and the location of that corner as previously restored or reestablished by distance and direction. Show the discrepancy on the plan view drawing under (d), above. Show the distances between the corner as previously restored or reestablished and (1) the corner as restored or reestablished, and (2) to at least 2 of the witness monuments shown on the drawing in (d), above.

(f) Was the corner restored through acceptance of (1) an obliterated evidence location, or, (2) a found perpetuated location?

2) A found perpetuated location

(g&h) Was the corner reestablished through lost corner proportionate methods? If so, show the method, including the directions and distances to other public land survey corners used as evidence or used for proportioning in determining the corner location?



(i) 1. Milo E. Stefan  
 (Type or print name) certify that the corner location shown on this record was determined by me or under my direction and control and that this U.S. Public Land Survey Monument Record is correct and complete to the best of my knowledge and belief.

Milo E. Stefan  
 Signature

10/31/88  
 Date

Certificate ready for filing:

Janet G. Ford  
 District Ranger

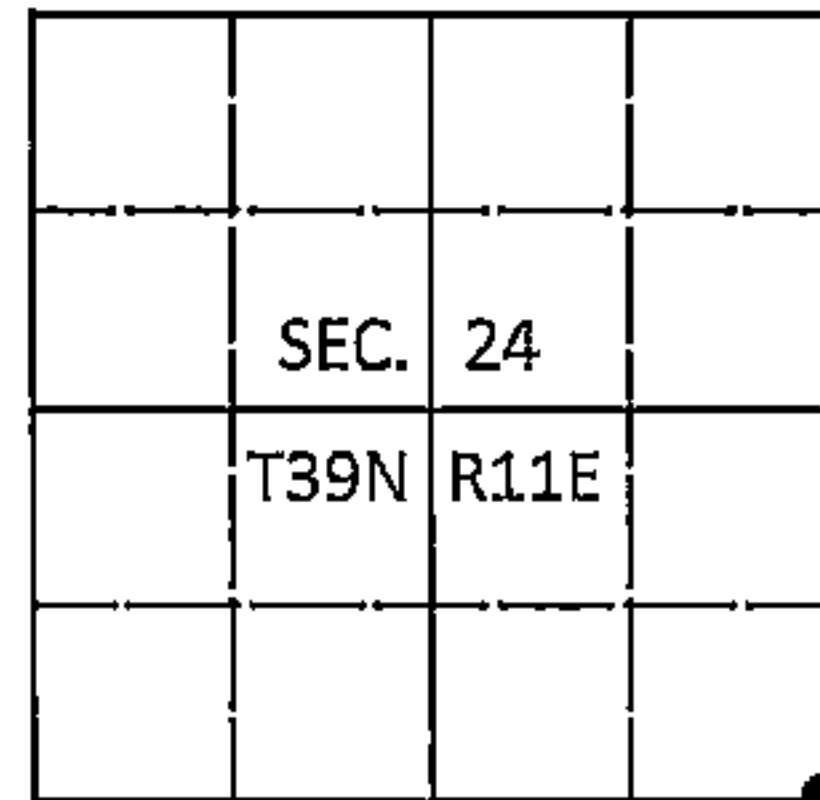
225403

U.S. PUBLIC LAND SURVEY MONUMENT RECORD

Note: This form is intended and designed to fulfill all requirements of Wisconsin Administrative Code, Chapter A-E 7.08 U.S. Public Land Survey Monument Record (3)(a-1).

(a) CORNER LOCATION  
Cor. of Secs. 19, 24, 25 & 30  
Township 39 North  
Range 11 & 12 East of the 4th P.M.  
Town of Three Lakes  
County of Oneida

WISCRS - Oneida County  
N: 238,329.66 USft  
E: 356,657.65 USft  
Datum: NAD 83(2011)  
GNSS Method: Static  
GNSS Control: WISCORS VRS



(b) HISTORY OF ORIGINAL CORNER ESTABLISHMENT

Original Surveyor: Original Accessories:

Date of Survey Commenced:  
Completed:

(b)(f)(g)(h) Description of monument found at this corner and if it was accepted, state all evidence (material, testimonial, occupational, plats, records, other monuments) used as a basis for accepting. If not accepted or if nothing was found, state evidence used as basis for establishing location. If re-established through lost corner proportionate methods, indicate all monuments, distances and directions used to establish. Indicate type of monument and sign post found or set.

*This is a perpetuation of a previous USPLS Monument Record by Milo E. Stefan, RLS dated November 15, 1988 and filed in the office of the Oneida County Register of Deeds. A complete history of the corner can be found on the previous monument record. I accept the previous location as a true and faithful perpetuation or reestablishment of the original corner location and further perpetuate it as follows.*

*August 14, 2016: I found and accepted the record monument, a 2" diam. iron pipe with a 2-1/2" diam. GLO brass cap projecting 10" above the ground surface. The existing accessories were found in substantial agreement with the record and were not remeasured as the sole purpose of this work is to report the coordinates of the corner point.*

*The coordinate value shown has been verified by at least one of the following methods: 1) comparison to a previously GPS determined published value; 2) the value is the average of two or more GPS observations at a markedly different time; 3) one or more distances were measured back to the GPS observed corner from temporary GPS observed offset locations.*

(c)(d)(e) Plan view of corner with ties to at least 4 witness monuments. If in disagreement with previously established corner, show the distances between the two corners and also indicate the ties to the disputed.

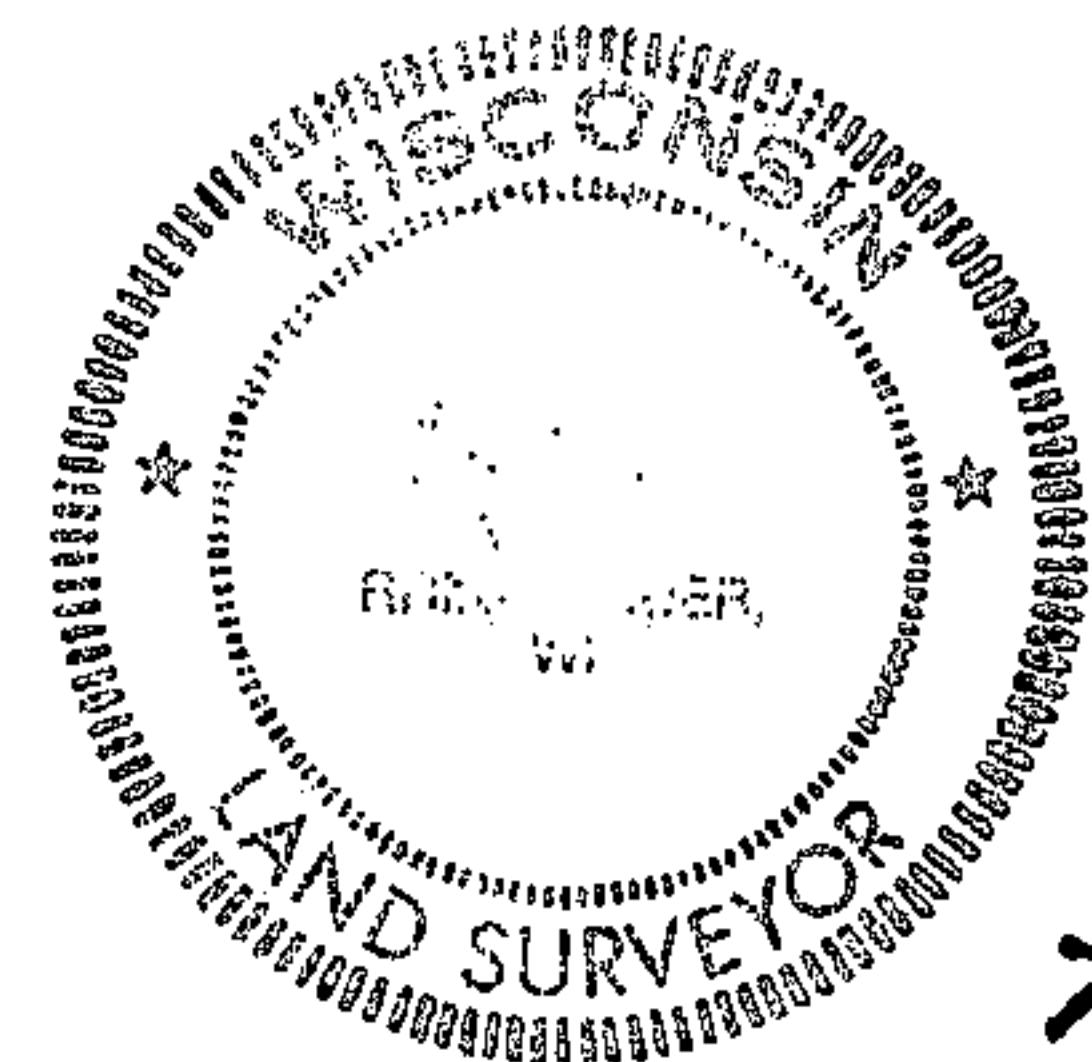
FOREST COUNTY, WI REGISTER OF DEEDS OFFICE  
CORTNEY BRITTEN CLEEREMAN ONEIDA COUNTY  
REGISTER OF DEEDS FILED  
RECEIVED FOR RECORD

MAY 31 2018

DEC 28 2016

Time: 10:00 A.M. AT            O'CLOCK            M  
Vol.: Corner Restoration  
Page Number: R-1  
KYLE J. FRANSON  
REGISTER OF DEEDS

(i) I, Michael J. Romportl, Professional Land Surveyor No. S-1624, hereby certify that the corner location on this record was determined by me or under my direction and control and that this U.S. Public Land Survey Monument Record is correct and complete to the best of my knowledge and belief.



Michael J Romportl 12/23/2016  
Signature Date

3911240000 (INDEX NO. R-25)

43911240000

R-1