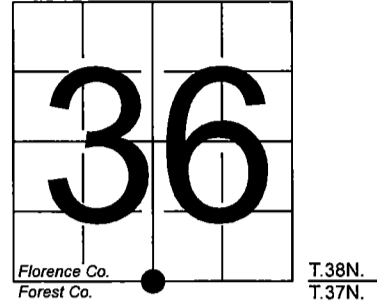


U. S. PUBLIC LAND SURVEY MONUMENT RECORD

NOTE: This form is intended and designed to fulfill all requirements of Wisconsin Administrative Code, Chapter A-E 7.08 U.S. Public Land Survey Monument Record (3) (a-i)

A-E 7.08(3)(a) Identity of corner:
South 1/4 Corner Section 36,
Township 38 North, Range 16 East
of the Fourth Principal Meridian,
Town of Fence, Florence County,
Wisconsin

WISCORS - FOREST COUNTY
N: 626,122.592 USft (XXX,XXX.XXX)
E: 955,506.183 USft (XXX,XXX.XXX)
Datum: NAD83 (2011)
GNSS Method RTK
GNSS Control WISCORS VRS



The coordinate value shown has been verified by the average of two or more GPS observations at a markedly different time. Coordinates shown in parenthesis are previously published values.

A-E 7.08(3)(b)

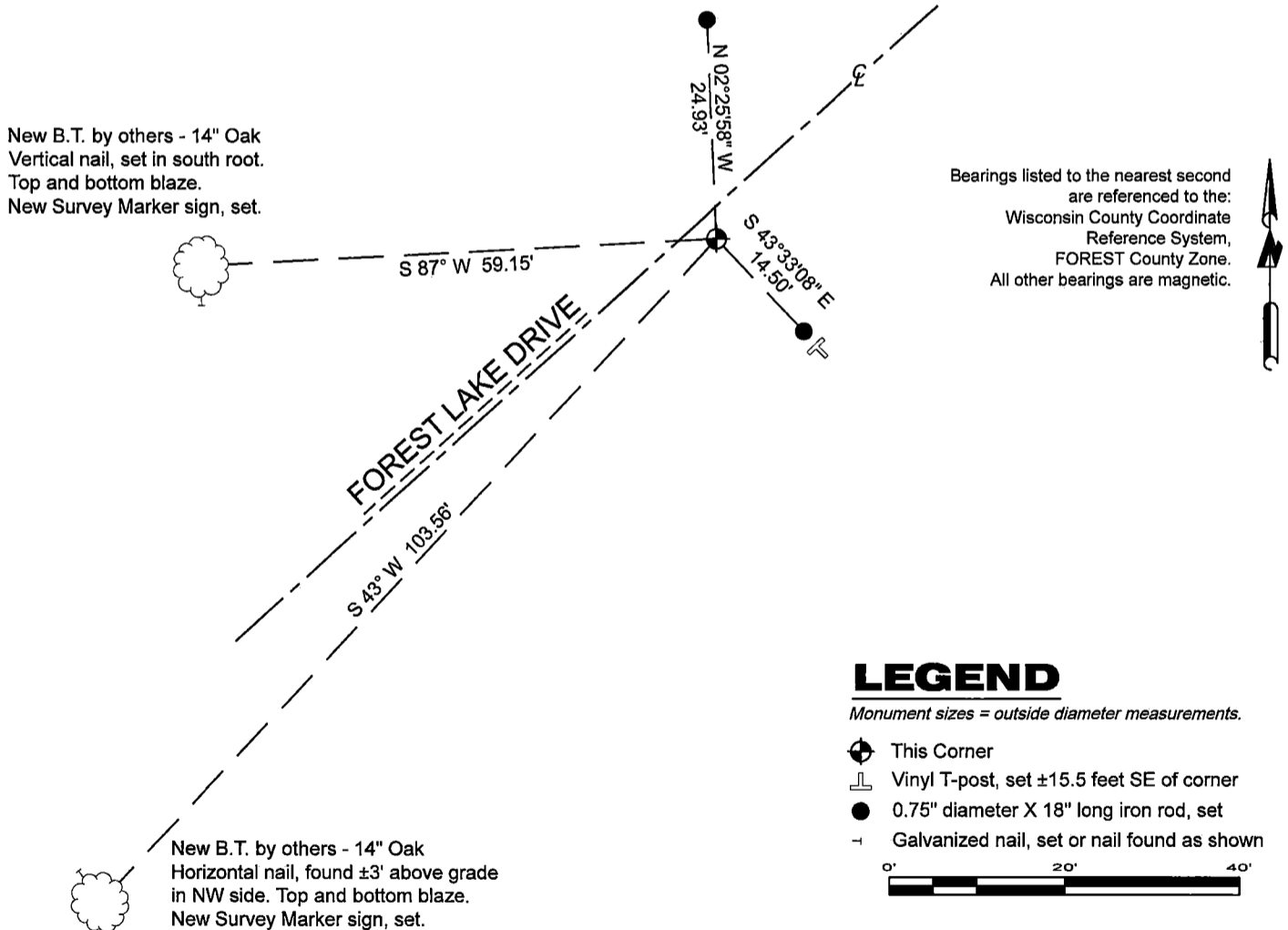
Original Surveyor: Artemas Curtis - September 1857 to October 1857
White Birch 14 - N 80° E, 82 Links, White Birch 10 - S 32° W, 33 Links

THENCE:

- August 7, 2014 - Surveyor 2402 - Steven Appiekamp - indicates this position as "fnd. pin-spike" on Forest Co. record Map #371601-20141106.

February 27, 2024 - In performing the 2024 - Forest County - "PLSS Corner Remonumentation and GPS Services" project, I found a 0.75" diameter iron rod near the centerline of Forest Lake Drive. The monument is ±3' southeast of centerline and flush with the road grade. I also found 2 bearing trees by others. I established 4 reference monuments as shown below.

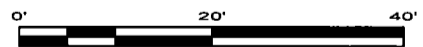
A-E 7.08(3)(c)(d) Plan view of corner with references to at least 4 witness monuments.



LEGEND

Monument sizes = outside diameter measurements.

- ⊕ This Corner
- └ Vinyl T-post, set ±15.5 feet SE of corner
- 0.75" diameter X 18" long iron rod, set
- Galvanized nail, set or nail found as shown



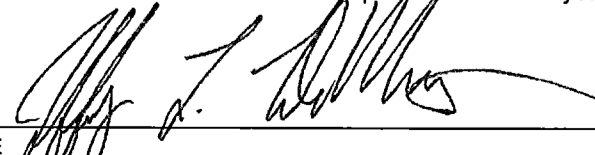
A-E 7.08(3)(e) 1857 Surveyor set a post, 2014 Surveyor found a "pin-spike". In 2024, I found a 0.75" diameter iron rod.

A-E 7.08(3)(f) I accept this monument in good faith as a FOUND PERPETUATED LOCATION of the corner.

A-E 7.08(3)(g)(h) This corner was not determined through lost-corner-proportionate methods.

A-E 7.08(3)(i) I, Jeffrey L. DeMuth, Professional Land Surveyor No. S-2656, hereby certify that the corner location on this record was determined by me or under my direction and control, and that this U.S. Public Land Survey Monument Record is correct and complete to the best of my knowledge, and belief.



SIGNATURE  DATE April 17, 2024

43816360020

43816360020

Z23