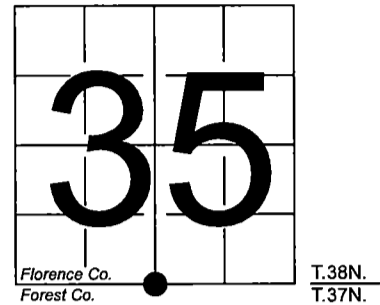


U. S. PUBLIC LAND SURVEY MONUMENT RECORD

NOTE: This form is intended and designed to fulfill all requirements of Wisconsin Administrative Code, Chapter A-E 7.08 U.S. Public Land Survey Monument Record (3) (a-i)

A-E 7.08(3)(a) Identity of corner:
South 1/4 Corner Section 35,
Township 38 North, Range 16 East
of the Fourth Principal Meridian,
Town of Fence, Florence County,
Wisconsin

WISCRS - FOREST COUNTY
N: 626,131.081 USft (XXX,XXX.XXX)
E: 950,224.264 USft (XXX,XXX.XXX)
Datum: NAD83 (2011)
GNSS Method RTK
GNSS Control WISCORS VRS



The coordinate value shown has been verified by the average of two or more GPS observations at a markedly different time. Coordinates shown in parenthesis are previously published values.

A-E 7.08(3)(b)

Original Surveyor: Artemas Curtis - September 1857 to October 1857
Sugar 15 - N 10° W, 12 Links, Sugar 15 - S 28° E, 39 Links

See previous Certified Land Corner Restoration - C0184 (Florence Co.) - June 11, 1991 - Surveyor 1394 - Norman A. Harrison - THENCE:

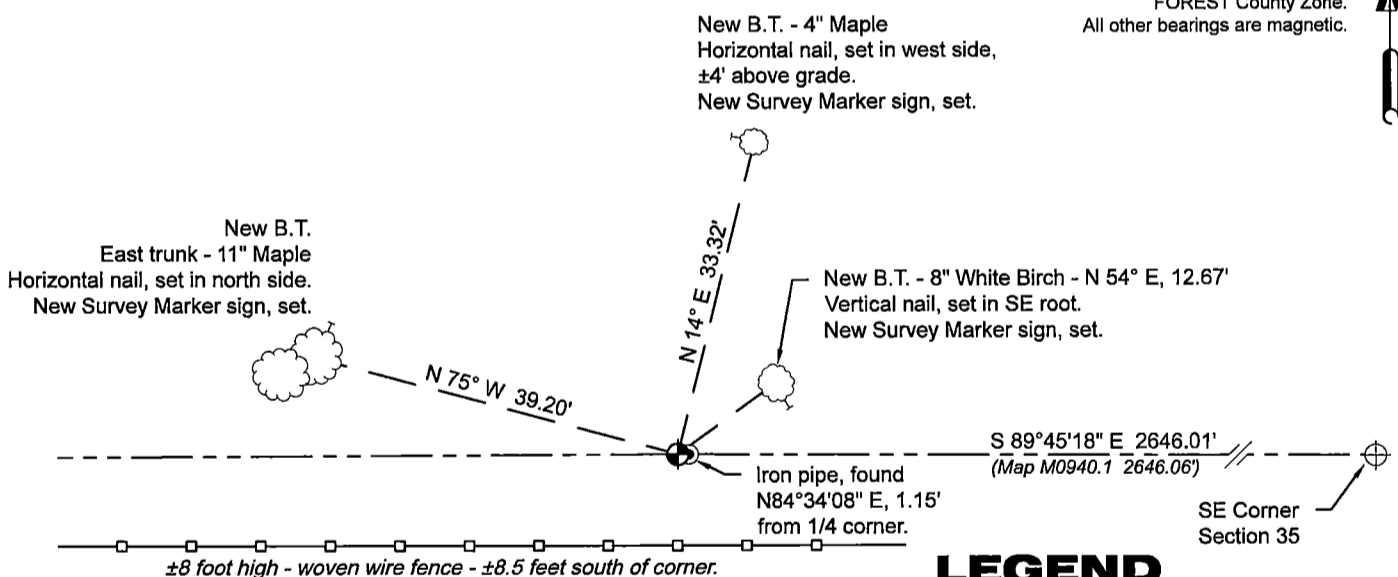
- July 20, 2001 - Surveyor 1394 - Norman A. Harrison - indicates this position as "existing iron pipe" on Forest Co. record Map #371602-20010726.

April 15, 2024 - In performing the 2024 - Forest County - "PLSS Corner Remonumentation and GPS Services" project, I found a 1.5" diameter iron rod leaning NW, I also found a 1.4" diameter iron pipe (straight) east of the rod. Because Harrison said he set a 1.25" diameter iron rod in 1991, I excavated the rod and set it straight (I do not know where the pipe came from, but Harrison found it in 2001, and did not mention the rod. I accept the rod as the corner position, as the distance from the rod to the SE corner of Section 35, agrees with Florence Co. Map M0940.1.

The monument is ±8.5' north of an 8' tall woven wire fence that runs east - west, and extends ±6" above grade. I did not find any of Harrison's bearing trees. I established 4 new reference monuments as shown below.

A-E 7.08(3)(c)(d) Plan view of corner with references to at least 4 witness monuments.

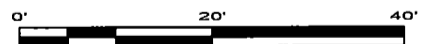
Bearings listed to the nearest second are referenced to the:
Wisconsin County Coordinate Reference System,
FOREST County Zone.
All other bearings are magnetic.



LEGEND

Monument sizes = outside diameter measurements.

- ⊕ This Corner
- ⊥ Vinyl T-post, set ±0.8 feet north of corner
- 1.4" diameter iron pipe, found
- Galvanized nail, set or nail found as shown



A-E 7.08(3)(e) 1857 Surveyor set a post, 1991 Surveyor set a 1 1/4" iron pipe, 2001 Surveyor found an iron pipe. In 2024, I found a 1.5" diameter X 30" long iron rod.

A-E 7.08(3)(f) I accept this monument in good faith as a FOUND PERPETUATED LOCATION of the corner.

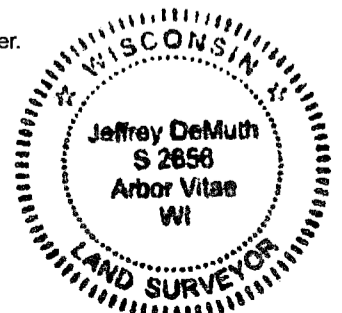
A-E 7.08(3)(g)(h) This corner was not determined through lost-corner-proportionate methods.

A-E 7.08(3)(i) I, Jeffrey L. DeMuth, Professional Land Surveyor No. S-2656, hereby certify that the corner location on this record was determined by me or under my direction and control, and that this U.S. Public Land Survey Monument Record is correct and complete to the best of my knowledge, and belief.

SIGNATURE

April 17, 2024

DATE



43816350020

43816350020

219