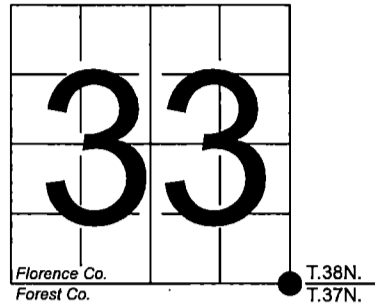


U. S. PUBLIC LAND SURVEY MONUMENT RECORD

NOTE: This form is intended and designed to fulfill all requirements of Wisconsin Administrative Code, Chapter A-E 7.08 U.S. Public Land Survey Monument Record (3) (a-i)

A-E 7.08(3)(a) Identity of corner:
Southeast Corner Section 33,
Township 38 North, Range 16 East
of the Fourth Principal Meridian,
Town of Fence, Florence County,
Wisconsin

WISCORS - FOREST COUNTY
N: 626,117.991 USft (XXX,XXX.XXX)
E: 942,288.336 USft (XXX,XXX.XXX)
Datum: NAD83 (2011)
GNSS Method RTK
GNSS Control WISCORS VRS



The coordinate value shown has been verified by the average of two or more GPS observations at a markedly different time. Coordinates shown in parenthesis are previously published values.

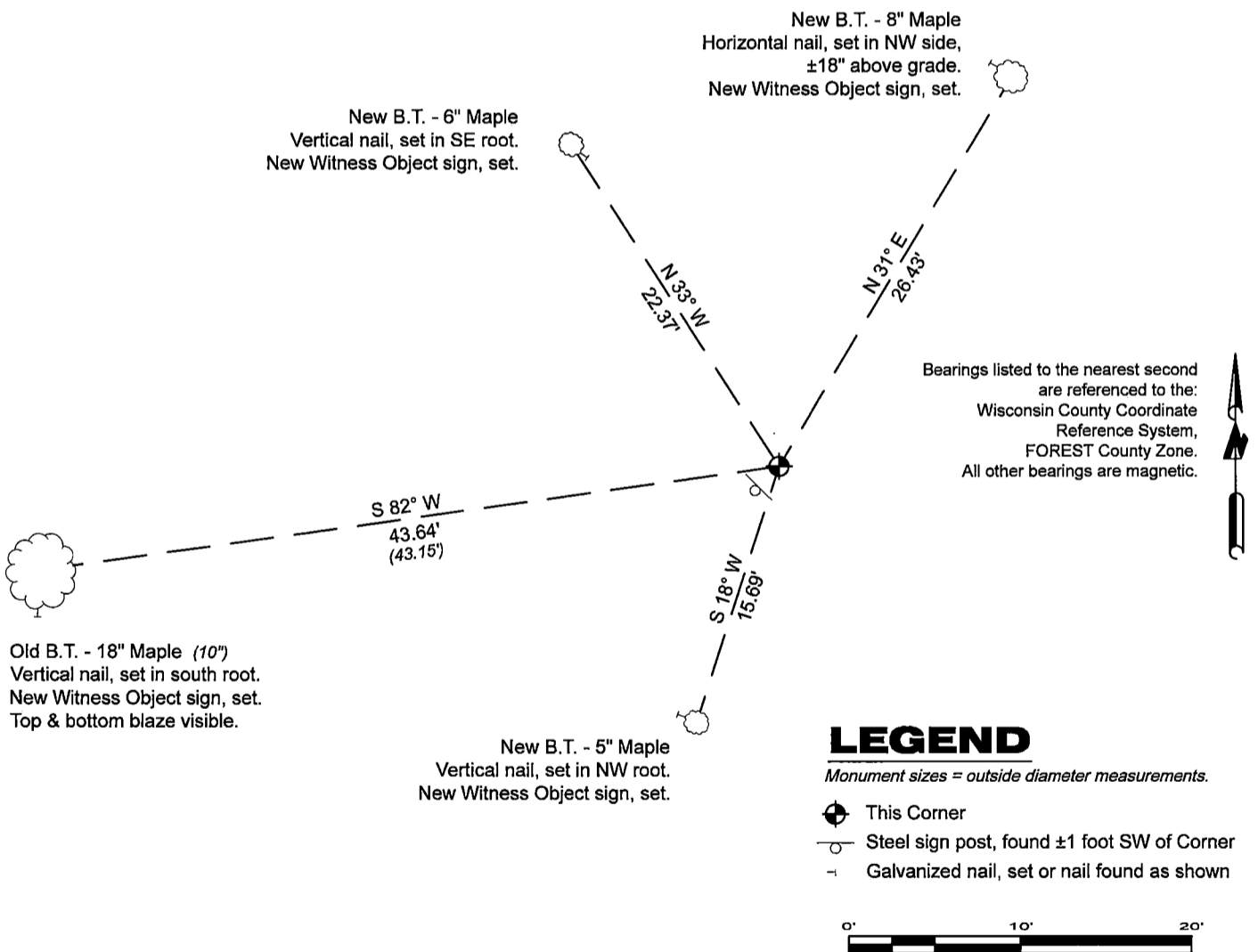
A-E 7.08(3)(b)

Original Surveyor: Artemas Curtis - September 1857 to October 1857
Yellow Birch 12 - N 9° W, 13 Links, Sugar 15 - N 20° E, 42 Links, Lynn 14 - S 55° E, 45 Links, Hemlock 18 - S 45° W, 56 Links

See Plat of Survey for Certified Land Corner Restoration & Establishment - C0995 & C0999 (Florence Co.) - 1986 - Surveyor 1634 Gary Lee Pisoni - THENCE:

April 16, 2024 - In performing the 2024 - Forest County - "PLSS Corner Remonumentation and GPS Services" project, I found a 2.5" diameter aluminum pipe monument with a 3.25" diameter aluminum cap stamped to identify the corner. The monument is on a hill side, and is flush with grade. I also found 1 of Pisoni's bearing trees alive and in good condition. I established 3 new reference monuments as shown below.

A-E 7.08(3)(c)(d) Plan view of corner with references to at least 4 witness monuments.



Old B.T. - 18" Maple (10")
Vertical nail, set in south root.
New Witness Object sign, set.
Top & bottom blaze visible.

New B.T. - 5" Maple
Vertical nail, set in NW root.
New Witness Object sign, set.

New B.T. - 6" Maple
Vertical nail, set in SE root.
New Witness Object sign, set.

New B.T. - 8" Maple
Horizontal nail, set in NW side,
±18" above grade.
New Witness Object sign, set.

Bearings listed to the nearest second are referenced to the: Wisconsin County Coordinate Reference System, FOREST County Zone. All other bearings are magnetic.

LEGEND

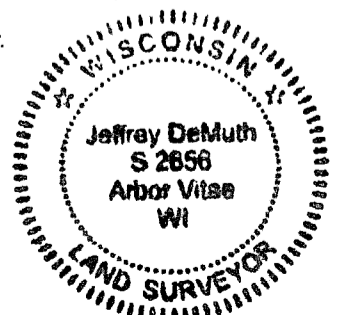
Monument sizes = outside diameter measurements.

- ⊕ This Corner
- Steel sign post, found ±1 foot SW of Corner
- Galvanized nail, set or nail found as shown

A-E 7.08(3)(e) 1857 Surveyor set a post, 1986 Surveyor found a 2 1/2" diameter aluminum pipe monument. In 2024, I found a 2.5" diameter aluminum pipe monument with a 3.25" diameter aluminum cap stamped to identify the corner.

A-E 7.08(3)(f) I accept this monument in good faith as a FOUND PERPETUATED LOCATION of the corner.
A-E 7.08(3)(g)(h) This corner was not determined through lost-corner-proportionate methods.

A-E 7.08(3)(i) I, Jeffrey L. DeMuth, Professional Land Surveyor No. S-2656, hereby certify that the corner location on this record was determined by me or under my direction and control, and that this U.S. Public Land Survey Monument Record is correct and complete to the best of my knowledge, and belief.



SIGNATURE

April 17, 2024
DATE

43816330000

43816330000

213