

U.S. PUBLIC LAND SURVEY MONUMENT RECORD

Index No. E-17

State of Wisconsin }
 County of FOREST } ss.

I, John C. Schulke, do hereby certify that on the 31 day of May, 1988, I found evidence of the Section corner of 2, 3, 10 and 11 Township 38, North, Range 14 East, Fourth Principal Meridian, as described hereon; and that from this evidence I established a new monument and accessories as described hereon to perpetuate the original location of this corner.

Resident witnesses:

History of original corner establishment:

The Original Government Survey of the subdivision of the township was done in 1865 by J. L. Nowlin. Set a wooden post with the following bearing trees:
 Birch 15" N30°W 18 lks.
 Hemlock 24" N05°E 30 lks.

REGISTER'S OFFICE!
 Forest County, Wis.
 Received for record this 9th day of December, D., 1988 at 10:10 o'clock A.M. and recorded in Vol. CORNER RESTORATIONS pag. E-17
Paul Aschenbrenner
 Register of Deeds

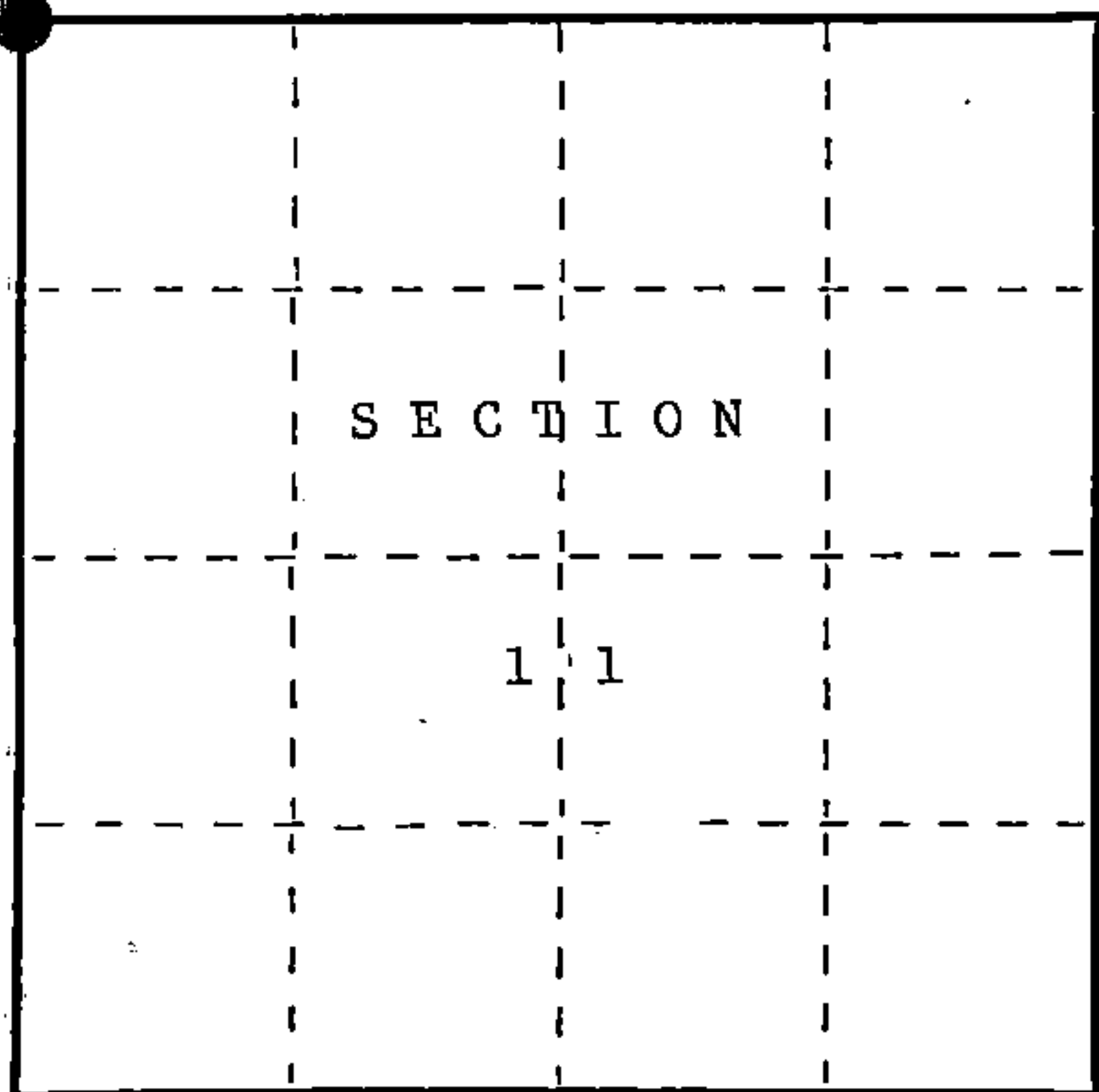
Description of corner evidence found:

Found no evidence of the original survey corner. Recovered scribed wood post set by Frank Baran, compassman in 1-28-37.

Description of monument and accessories I established to perpetuate the original location of this corner.

Set a 2 1/2" diameter aluminum pipe monument, 3 feet long, 2 feet in the ground, with an aluminum cap stamped: T38N, R14E, S2, S3, S10, S11, 1988, S-1665. Established the following corner references:

Sugar Maple	7"	N29°E	52.34 ft.
Sugar Maple	8"	S67°E	52.98 ft.
Sugar Maple	10"	S55°W	50.49 ft.
Sugar Maple	12"	N51°W	18.81 ft.
Steel sign post		South	0.9 ft.



○ = Corner monument restored.

Dated at Cable, Wis., this 3rd day of October, 1988

Signature *John C Schulke* Title Register Land Surveyor Registration No. S-1665
 (County Surveyor, Registered Land Surveyor, or other duly authorized official)

Office of Register of Deeds, County of Forest, I hereby certify that the within instrument was filed in this office for record on the 9th day of December, 1988 at 10:10 o'clock A.M.

Paul Aschenbrenner
 (Register of Deeds)

By _____ Deputy

FORM NO. 985-A

M.C. Miller Company

Stock No. 26273

DOCUMENT NUMBER 136592

43814030000

(e) Describe any material discrepancy between the location of the corner as restored or reestablished and the location of that corner as previously restored or reestablished by distance and direction. Show the discrepancy on the plan view drawing under (d), above. Show the distances between the corner as previously restored or reestablished and (1) the corner as restored or reestablished, and (2) to at least 2 of the witness monuments shown on the drawing in (d), above.

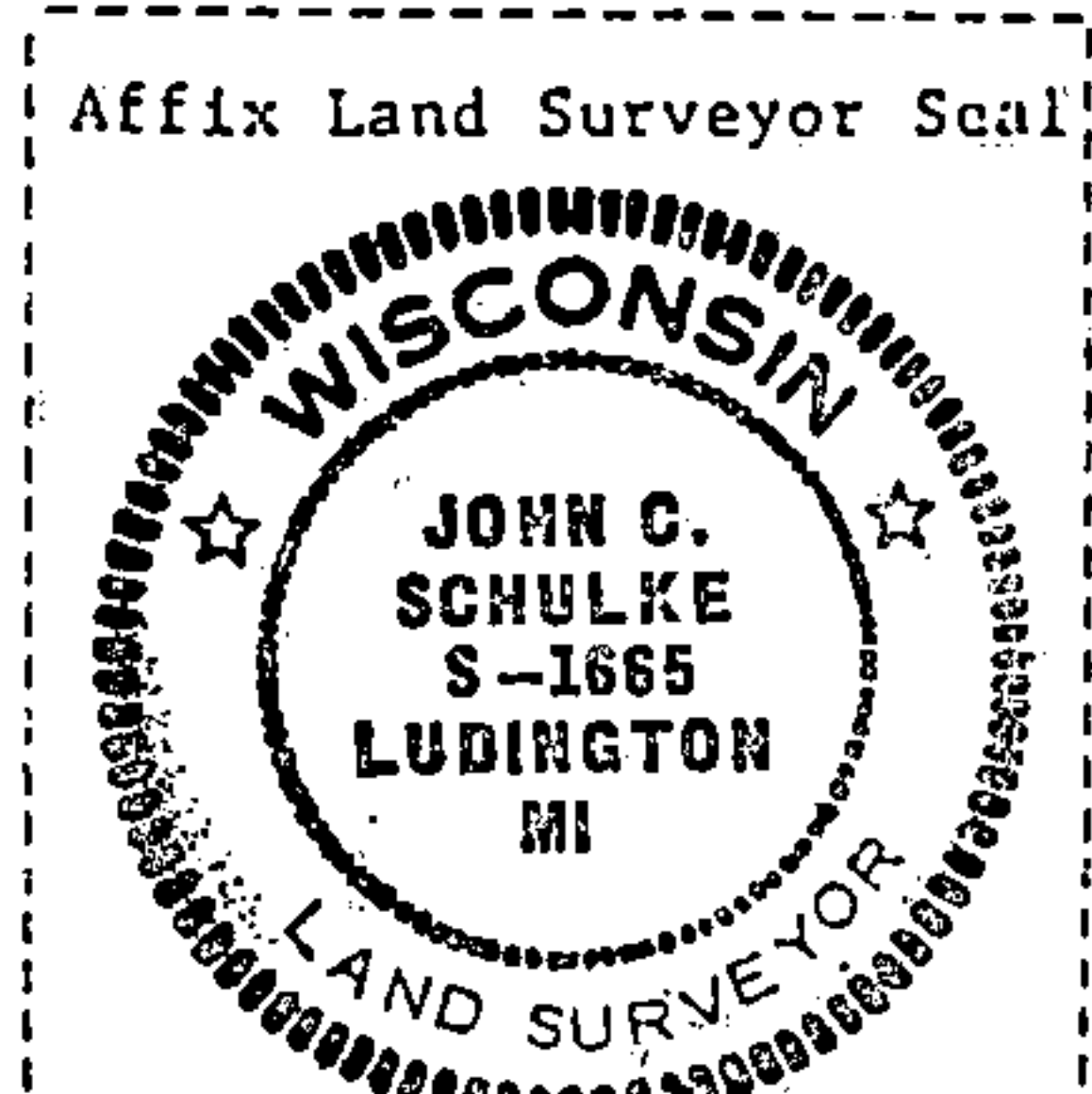
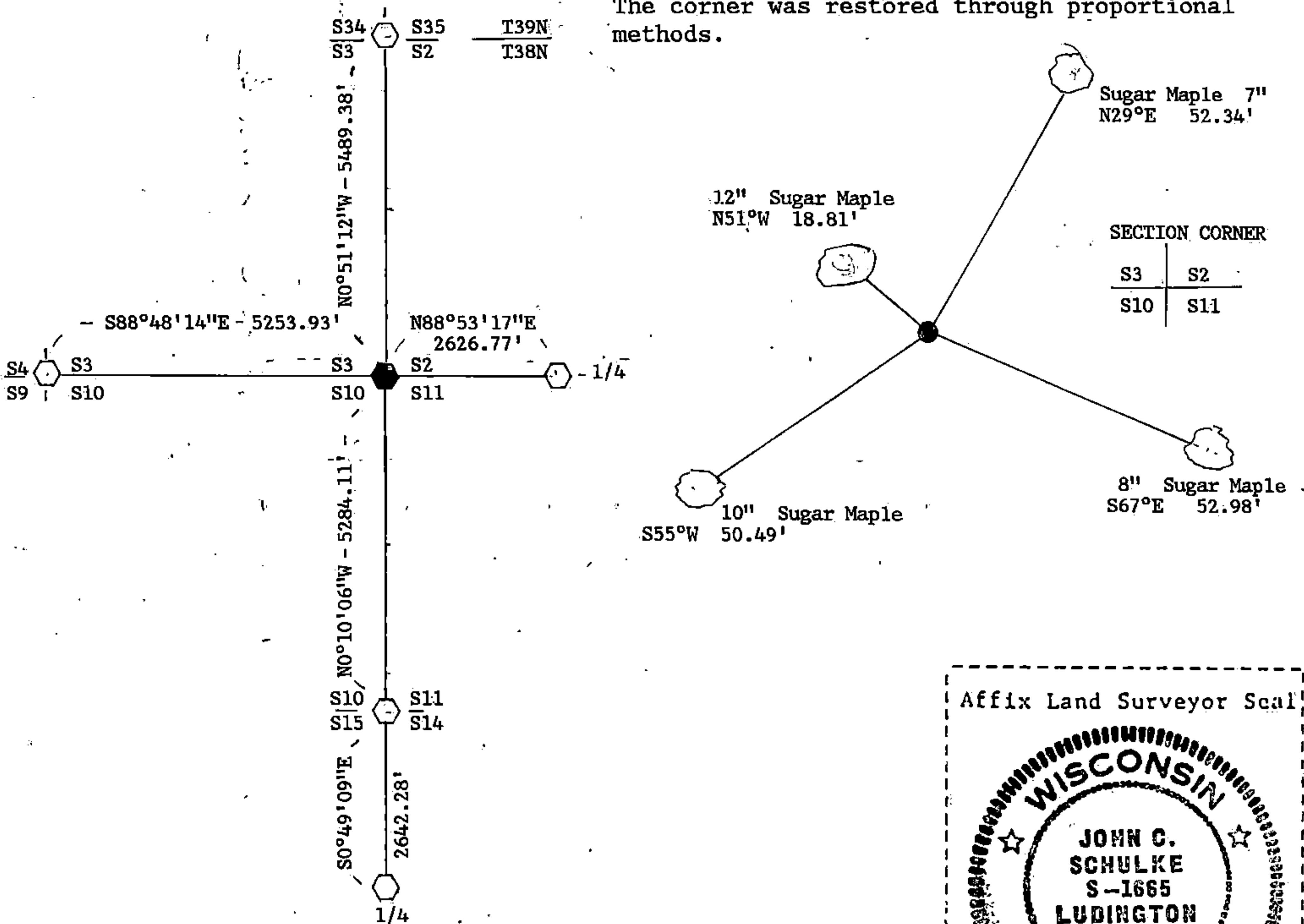
Baran's post was recovered $S79^{\circ}58'W$ 47.0 feet from the restored corner. Baran found no original evidence.

100-25-38
 DISTRICT RANGER
 EDWARD BRIGGS

(f) Was the corner restored through acceptance of (1) an obliterated evidence location, or, (2) a found perpetuated location?
 See g and h.

(g&h) Was the corner reestablished through lost corner proportionate methods? If so, show the method, including the directions and distances to other public land survey corners used as evidence or used for proportioning in determining the corner location?

The corner was restored through proportional methods.



(i) John Schulke
 (type or print name) certify that the corner location shown on this record was determined by me or under my direction and control and that this U.S. Public Land Survey Monument Record is correct and complete to the best of my knowledge and belief.

John C Schulke Signature Oct 3rd 1988 Date

Survey requested by: Edward Briggs District Ranger 10-25-88 Date