

Document Number

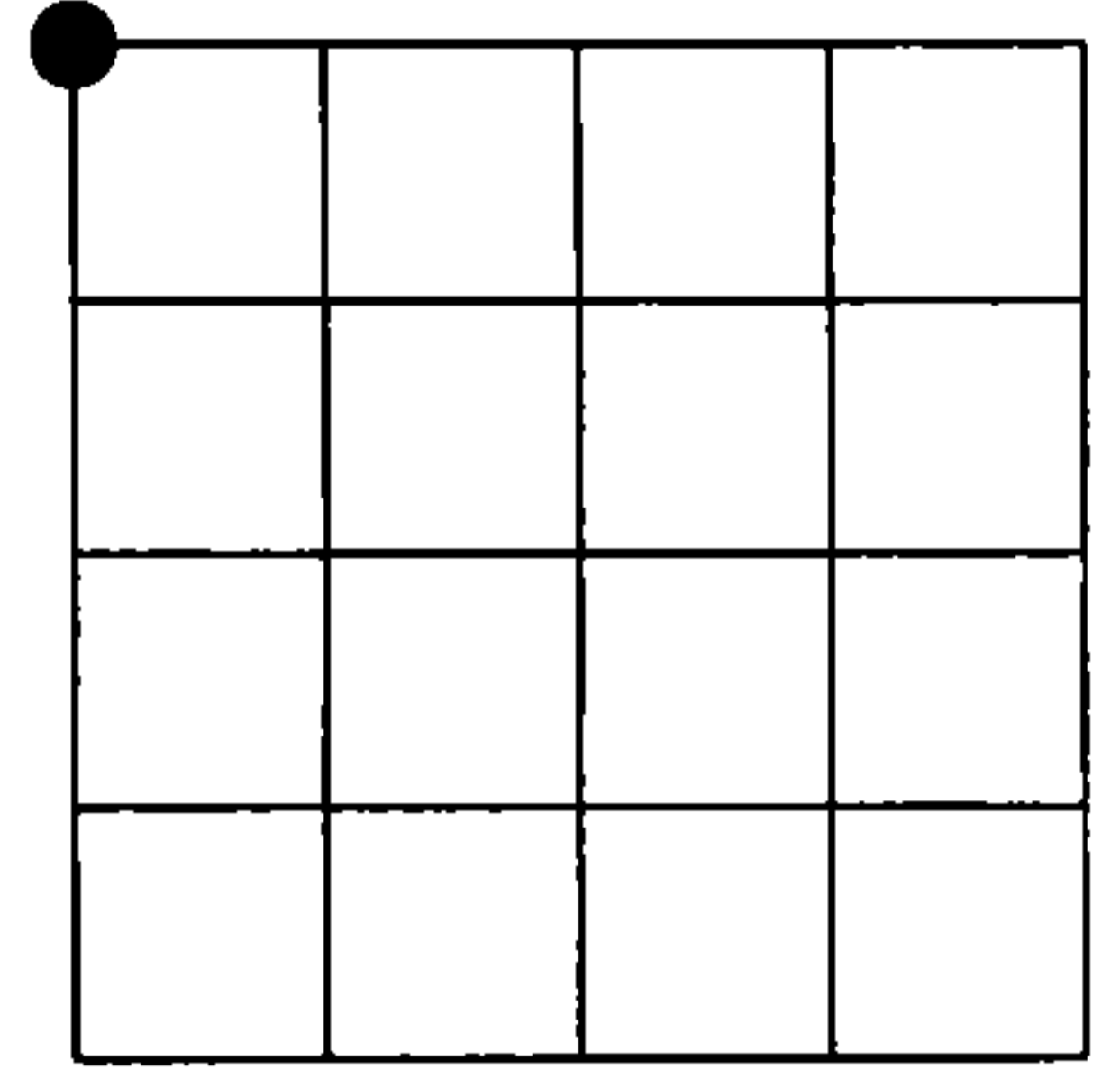
210300

REGISTER'S OFFICE
Forest County, Wis.
Received for record this 24th day
of October A.D., 2012 at
11:00 o'clock A.M. and recorded
in Vol. Corner Restoration
page N-13
Register of Deeds

U.S. PUBLIC LAND SURVEY MONUMENT RECORD

NOTE: This form is intended and designed to fulfill all requirements of Wisconsin Administrative Code, Chapter A-E 7.08 U.S. Public Land Survey Monument Record (3)(a)(b)(c)(d)(e)(f)(g)(h)(i). An additional sheet may be added if necessary to conform with said requirements.

(a) Corner location: Township 38 North
Range 13 East
Town of Argonne
Forest County, Wisconsin

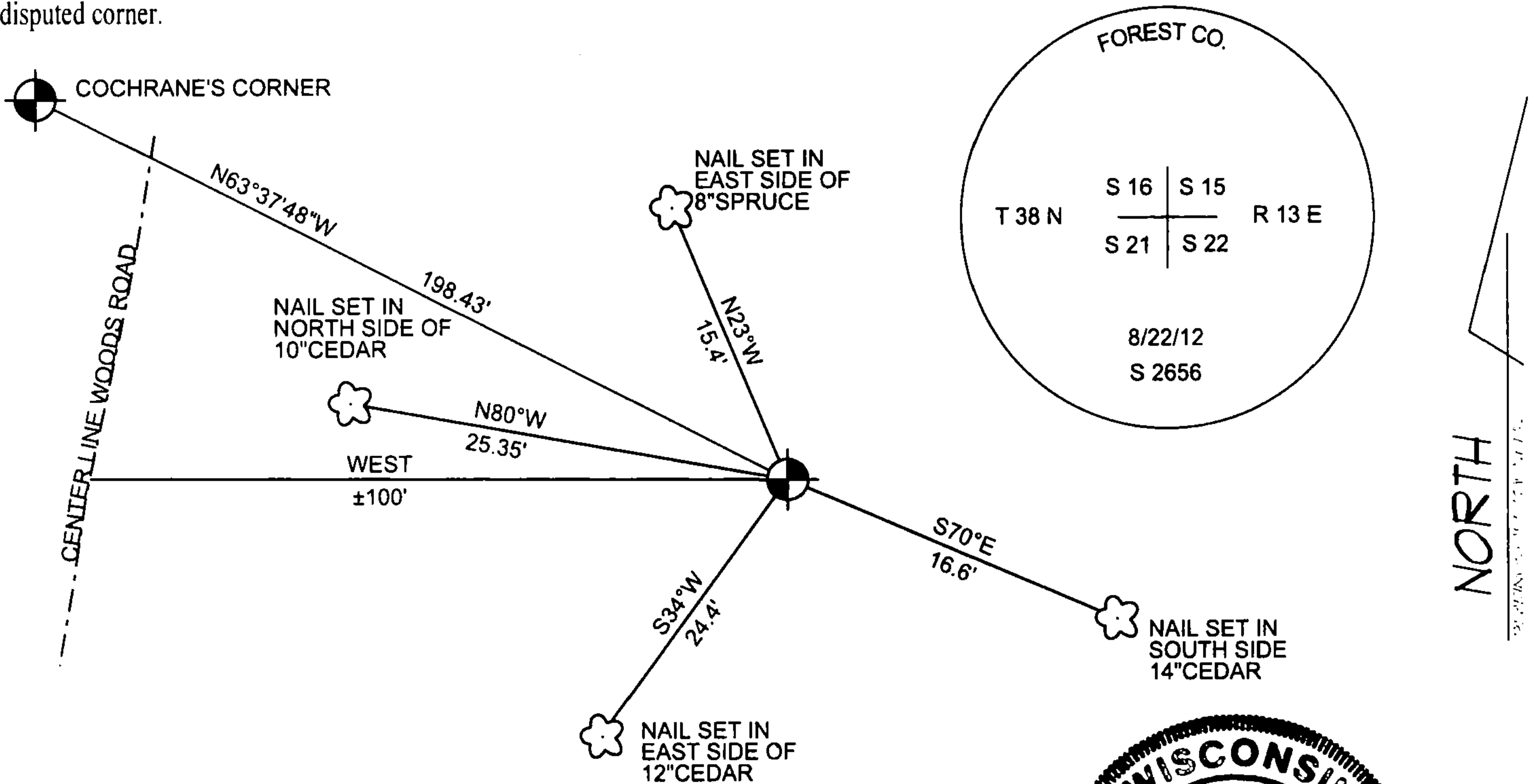


Section 22

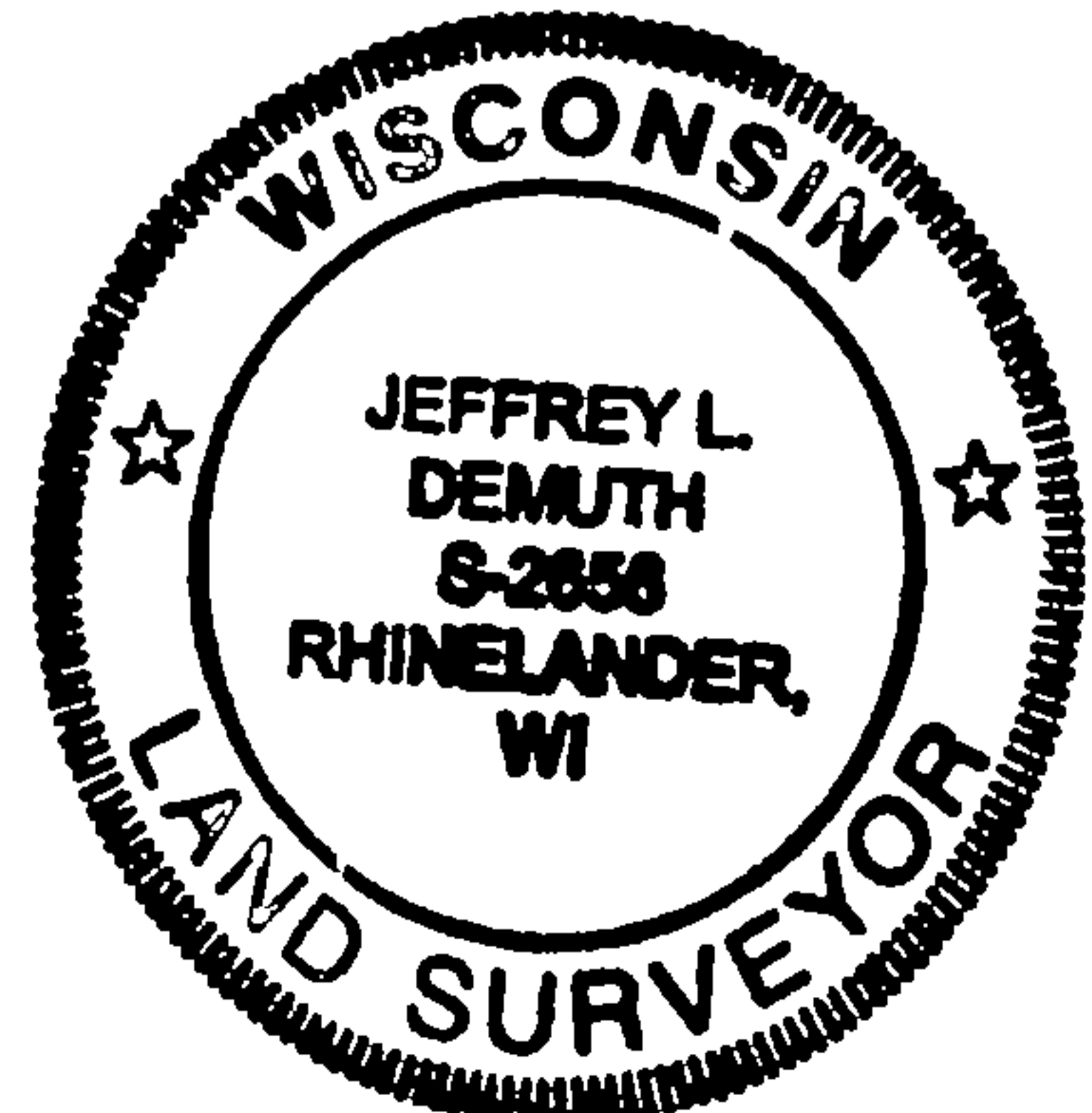
(b)(f)(g)(h) Description of monument found at this corner and if it was accepted, state all evidence (material, testimonial, occupational, plats, records, other monuments) used as a basis for accepting. If not accepted or if nothing was found, state evidence used as basis for establishing location. If reestablished through lost corner proportionate methods, indicate all monuments, distances and directions used to establish. Indicate type of monument found or set and sign post.

AUGUST 1865 - JAMES NOWLIN SET POST COMMON TO SECTIONS 15, 16, 21 AND 22
AUGUST 1970 - NOTES BY WILLIAM B. COCHRANE STATES: "ON TOP OF RIDGE MOUND OF ROCK WITH 7FT POST. 7FT. POST WAS SET IN 1961 BY STATE F.S...."
1995 - WILLIAM B. COCHRANE ACCEPTS THE LOCATION OF THE 7FT. WOOD POST AND SETS A 2 1/2" X 36" ALUMINIUM PIPE MONUMENT STAMPED TO IDENTIFY CORNER.
JUNE, 2012 - I FIND AND REJECT COCHRANE'S MONUMENT, DUE TO THE FACT THAT THE ORIGINAL GOVERNMENT NOTES PLACE THE CORNER IN A SWAMP, RATHER THAN ON TOP OF A RIDGE.
I DECLARE THIS CORNER TO BE OBLITERATED AND ESTABLISH IT'S POSITION BY TOPOGRAPHIC CALLS TO THE NORTH AND SOUTH.
08/22/2012 - I SET A 2 1/4" DIAMETER X 30" LONG FOREST COUNTY ALUMINUM MONUMENT STAMPED TO IDENTIFY THE CORNER, AND WITNESSES AS SHOWN BELOW.

(c)(d)(e) Plan view of corner with ties to at least 4 witness monuments. If in disagreement with previously established corner, show the distances between the two corners and also indicate the ties to the disputed corner.



(i) I, Jeffrey L DeMuth, Registered Land Surveyor #S-2656, hereby certify that the corner location on this record was determined by me or under my direction and control and that this U.S. Public Land Survey Monument Record is correct and complete to the best of my knowledge and belief.



Signature: [Handwritten signature] Date: 10/16/2012

Index No. N-13