

CERTIFIED LAND CORNER RESTORATION

State of Wisconsin }  
County of Forest } ss.

I Milo E. Stefan, do hereby certify that on the 26th day of May, 19 83, I found evidence of the Northwest corner of Section 23 Township 38 North Range 13 East, Fourth Principal Meridian, as described hereon; and that from this evidence I established a new monument and accessories as described hereon to perpetuate the original location of this corner:

Description of original monument and accessories and subsequent restorations:

Surveyed in 1865 by H. Nowlin and J. L. Nowlin  
80.00 chains, set wood post  
Spruce, 4", S40°W, 8 lks., 5.28 feet  
Spruce, 4", N25°E, 20 lks., 13.20 feet

Description of corner evidence found:

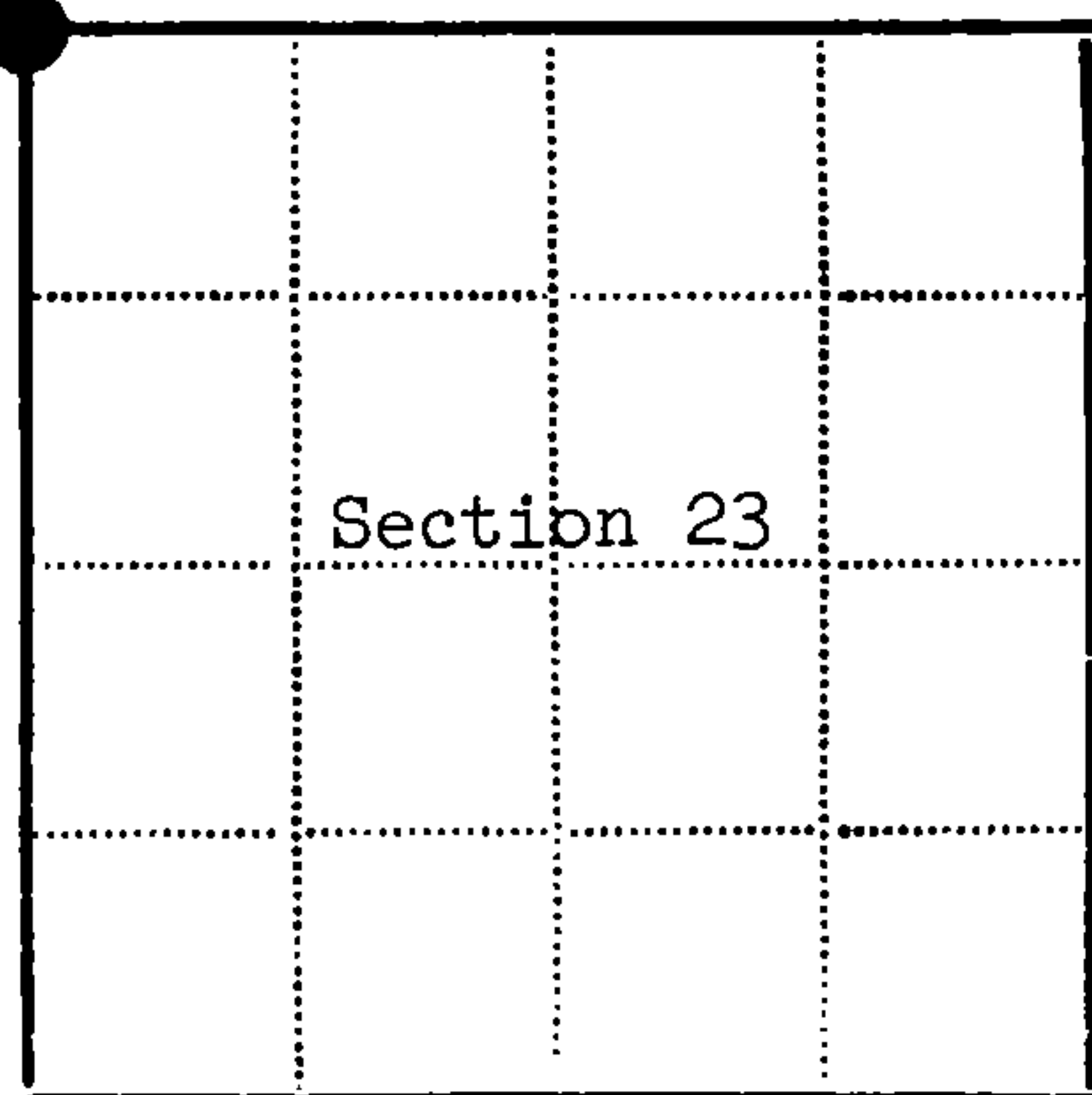
Spruce stump, N25°E, 12.50 feet  
Local Evidence: Post point--rotted off at ground line (top fallen alongside).  
Blazed line N-S (1920 vintage).

Description of monument and accessories I established to perpetuate the location of this corner:

Placed a 2" x 60" aluminum monument (Berntsen) with tablet stamped as follows:  
T38N, R13E, S14, S15, S22, S23, 1983, RLS-1558  
From which the following bear:  
Black Spruce, 4", N89°E, 18.75 feet  
Black Spruce, 2", S37°E, 6.83 feet  
Black Spruce, 3", S61°W, 10.51 feet  
Black Spruce, 4", N34°W, 25.53 feet  
Steel Sign Post, NW, 1.70 feet



DOCUMENT NO. 124235



● - Corner monument restored  
□ -

Resident witnesses.....

Dated at Rhinelander Wisconsin, this day of 19 83.

Signature Milo E. Stefan Title Land Surveyor  
(County Surveyor, Registered Land Surveyor, or other duly authorized official)

Surveyors Registration No. RLS-1558

Office of Register of Deeds County of Forest

I hereby certify that the within instrument was filed in this office for record on the 15th day of September 19 83, and was filed in Book No. Page No. of County Records.

Signature Eugene Stegany Title Register of Deeds

Township 38 North Range 13 East Section 23 Index No. N-17 Page No. 21

N17

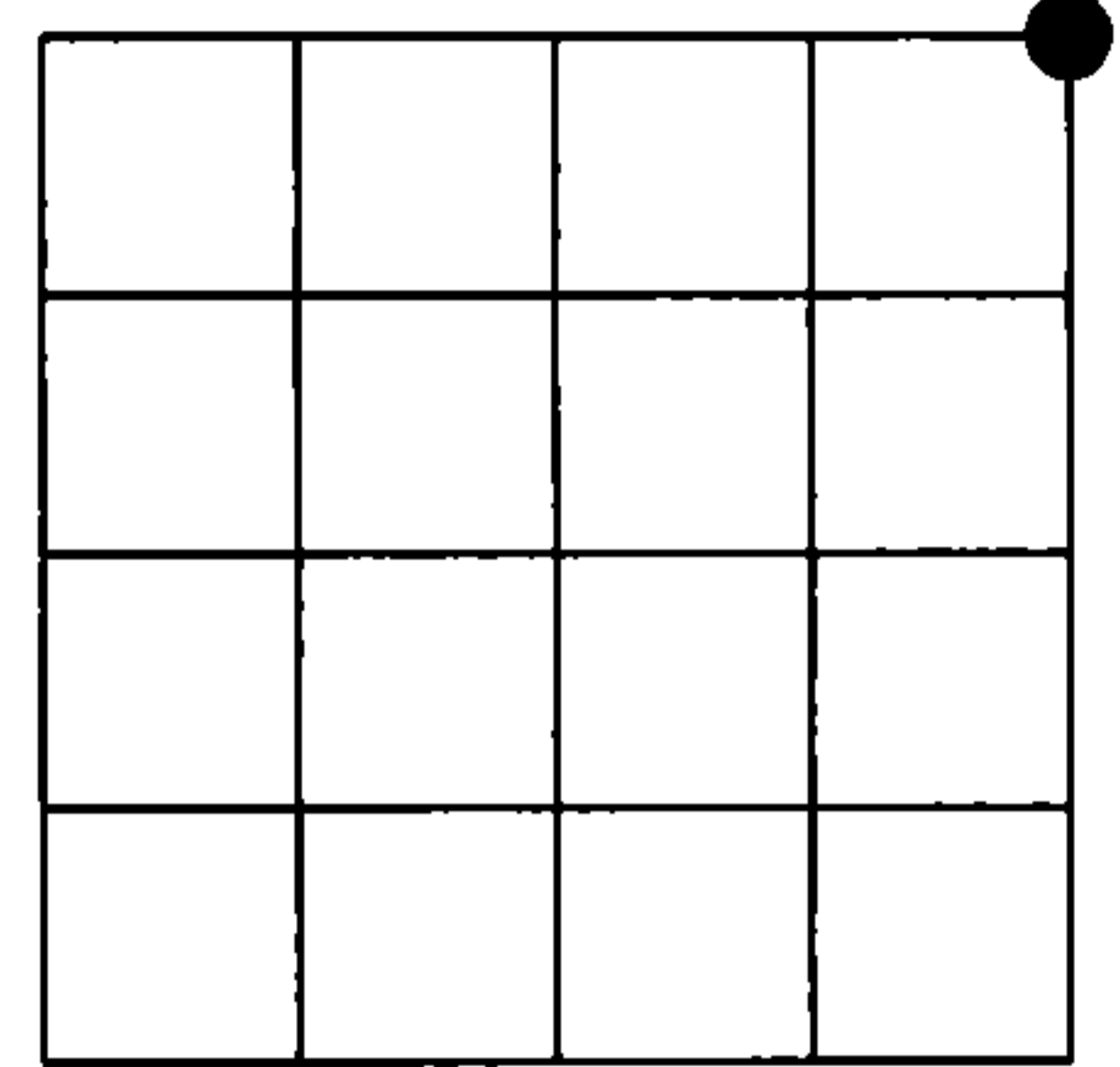
**Document Number**  
**210311**

REGISTER'S OFFICE  
Forest County, Wis.  
Received for record this 25<sup>th</sup> day  
of October A.D., 2012 at  
11:00 o'clock A.M. and recorded  
in Vol. Corner Restoration  
page N-17  
*Christina Sitter Deputy*  
Register of Deeds

# U.S. PUBLIC LAND SURVEY MONUMENT RECORD

NOTE: This form is intended and designed to fulfill all requirements of Wisconsin Administrative Code, Chapter A-E 7.08 U.S. Public Land Survey Monument Record (3)(a)(b)(c)(d)(e)(f)(g)(h)(i). An additional sheet may be added if necessary to conform with said requirements.

(a) Corner location: Township 38 North  
Range 13 East  
Town of Argonne  
Forest County, Wisconsin



Section 22

(b)(f)(g)(h) Description of monument found at this corner and if it was accepted, state all evidence (material, testimonial, occupational, plats, records, other monuments) used as a basis for accepting. If not accepted or if nothing was found, state evidence used as basis for establishing location. If reestablished through lost corner proportionate methods, indicate all monuments, distances and directions used to establish. Indicate type of monument found or set and sign post.

AUGUST 1865 - JAMES NOWLIN SET POST COMMON TO SECTIONS 14, 15, 22 AND 23:

1983 - MILO E. STEFAN:  
PLACED 2" X 60" ALUMINUM MONUMENT WITH TABLET STAMPED TO IDENTIFY CORNER.  
(SEE INDEX NUMBER N-17 PAGE NUMBER 21)

JUNE, 2012 - I FOUND AND REJECTED MILO'S 1983 CORNER MONUMENT, BECAUSE IT'S POSITION DISAGREES WITH THE TOPOGRAPHIC CALLS FROM THE ORIGINAL SURVEY NOTES.

I USED THE ORIGINAL SURVEY NOTES CALL FOR A STREAM  
"15 LKS WIDE RUNNING NE", BEING 65.5 CHAINS NORTH OF THIS CORNER AND  
ON THE LINE COMMON TO SECTION 14 AND SECTION 15.

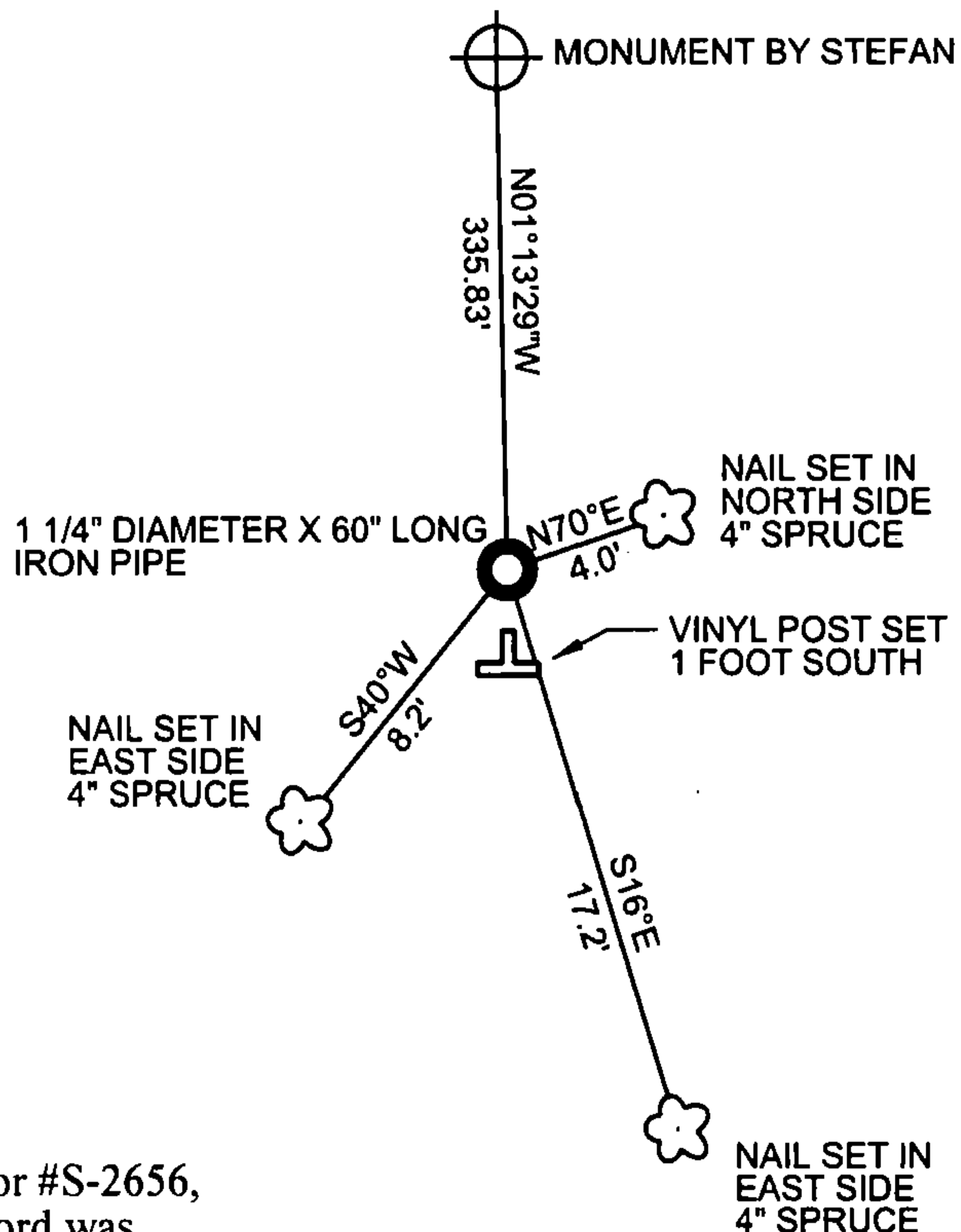
09/18/2012 - I FOUND THE NORTH BRANCH OF THE POPPLE RIVER, TO BE APPROXIMATELY  
15 FEET WIDE, WELL DEFINED AND RUNNING IN A NORTHEASTERLY DIRECTION.

I COMPARED THE AERIAL PHOTOS OF TODAY, TO THOSE FROM 1937 AND DETERMINED  
THAT THE RIVER HAS CHANGED VERY LITTLE IN 75 YEARS.

I SET A 1 1/4" DIAMETER X 60" LONG IRON PIPE A 4323 FEET SOUTH OF THE NORTH BRANCH  
OF THE POPPLE RIVER AND ON AN EXTENSION OF THE CENTERLINE OF  
STATE TRUNK HIGHWAY 55.

AT THIS POSITION I FOUND A 4 FOOT LONG PIECE OF CEDAR LYING DOWN, BURIED AND  
SUBMERGED IN WATER; NOTE: THERE ARE NO CEDAR TREES IN THIS PORTION OF SWAMP,  
ONLY SPRUCE TREES.

(c)(d)(e) Plan view of corner with ties to at least 4 witness monuments. If in disagreement with previously established corner, show the distances between the two corners and also indicate the ties to the disputed corner.



(i) I, Jeffrey L DeMuth, Registered Land Surveyor #S-2656, hereby certify that the corner location on this record was determined by me or under my direction and control and that this U.S. Public Land Survey Monument Record is correct and complete to the best of my knowledge and belief.

Signature *[Handwritten Signature]* Date 10/16/2012

Index No.

**N-17**