

CERTIFIED LAND CORNER RESTORATION

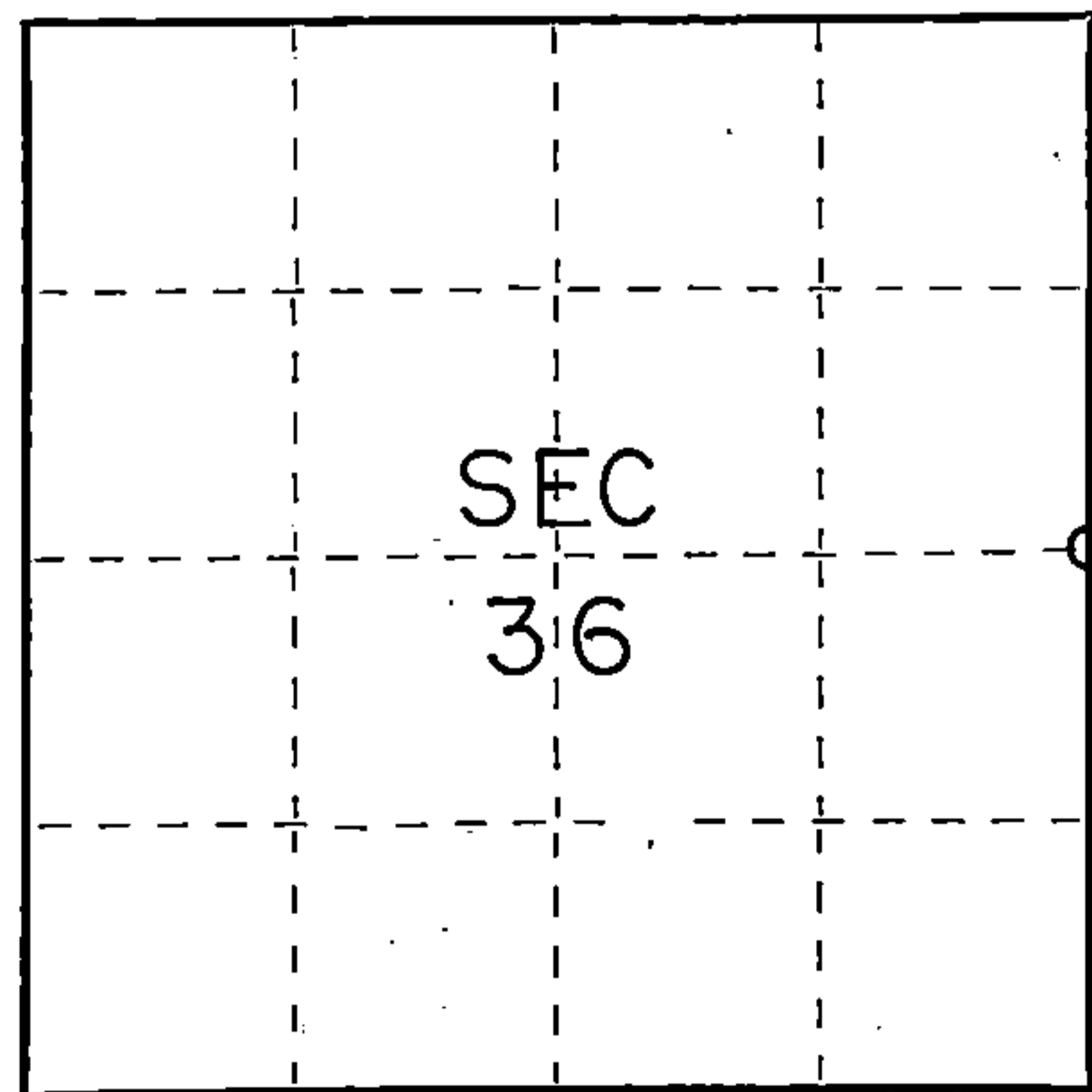
Index No. X-25

State of Wisconsin }
County of Forest } ss.

I Thomas R. Arnott, do hereby certify that on the 22nd day of June, 1976, I found evidence of the 1/4 corner of sections 36 & 31 Township 37, North, Range 16-17 E, Fourth Principal Meridian, as described hereon; and that from this evidence I established a new monument and accessories as described hereon to perpetuate the original location of this corner.

Resident witnesses:

.....
.....
.....



○ = Corner monument restored.

History of original corner establishment:

Original line by Astemus Curtis: 1857

Hemlock 11 S75W 27 Lks.
Hemlock 10 N62E 21 Lks.

Description of corner evidence found:

Found 2" iron pipe with brass cap marked G. E. Co. 1953 14" below road surface

Description of monument and accessories I established to perpetuate the original location of this corner.

Left 2" iron pipe with brass cap in place

Ties:

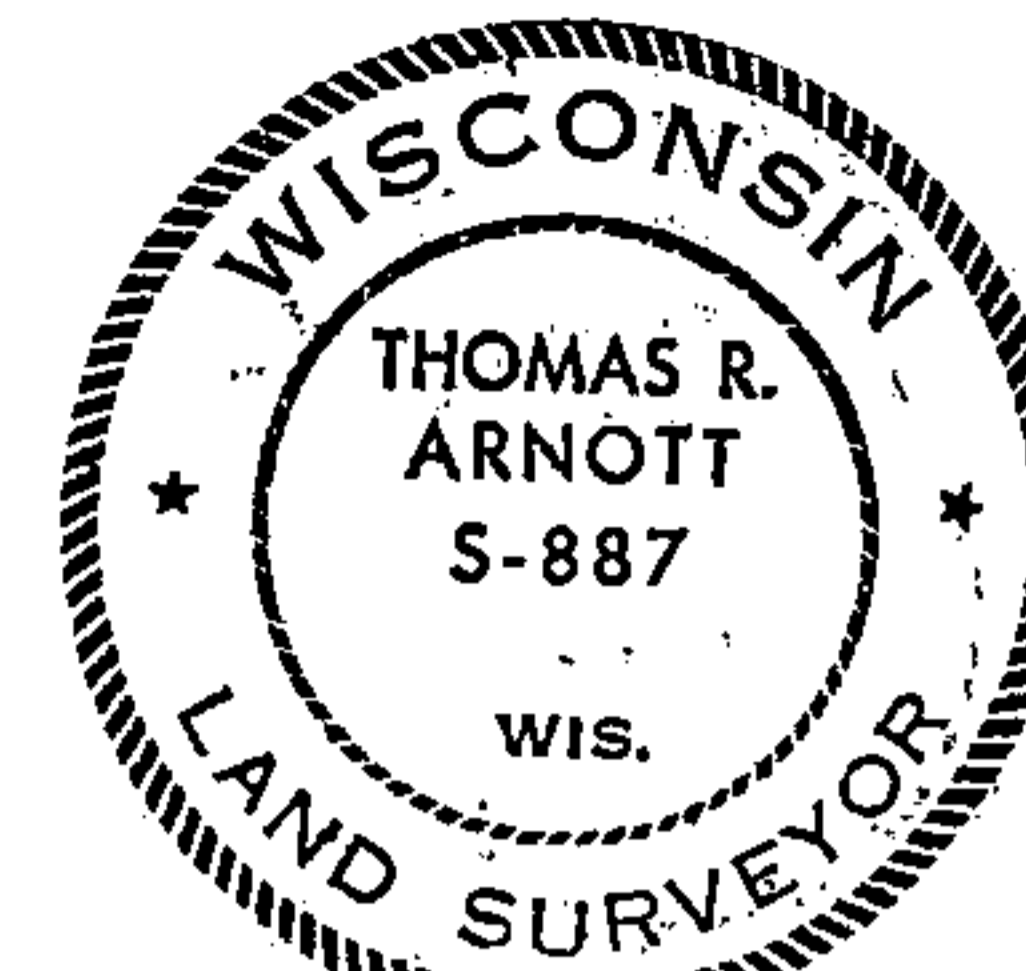
Forest County aluminum monument S86W 24.52 feet
Power pole (2716-36R1) S10W 109.89 feet

Dated at Grandon, Wis., this 23rd day of June, 1976

Signature Thomas R. Arnott Title Surveyor Registration No. S-887
(County Surveyor, Registered Land Surveyor, or other duly authorized official)

Office of Register of Deeds, County of Forest, I hereby certify that the within instrument was filed in this office for record on the 23rd day of June, 1976 at 3 o'clock PM.

Eugene Stutzman Document Number 109515
(Register of Deeds)
By _____ Deputy



FORM 985 H. C. MILLER CO., MILWAUKEE

43716 362000

U.S. PUBLIC LAND SURVEY MONUMENT RECORD

(As Required By s. A-E 7.08, WI Adm. Code)

History of original corner establishment and subsequent restorations and description of any record, monument, occupational, testimonial or other evidence considered:

- 1857 Astemus Curtis did original line
- 1976 Thomas Arnott found 2" iron pipe with brass cap marked G.E. Co. 1953 14" below road surface
- 1998 H. Guy found 1" iron pipe and set ties

REGISTER'S OFFICE
 Forest County, Wis.
 Received for record this 31st day
 of December A.D., 1998 at
9:00 o'clock A.M. and recorded
 in Vol. CORNER RESTORATION
 page X-25
Christie Ehlinger
 Deputy Register of Deeds

Corner was: (Check All That Apply)

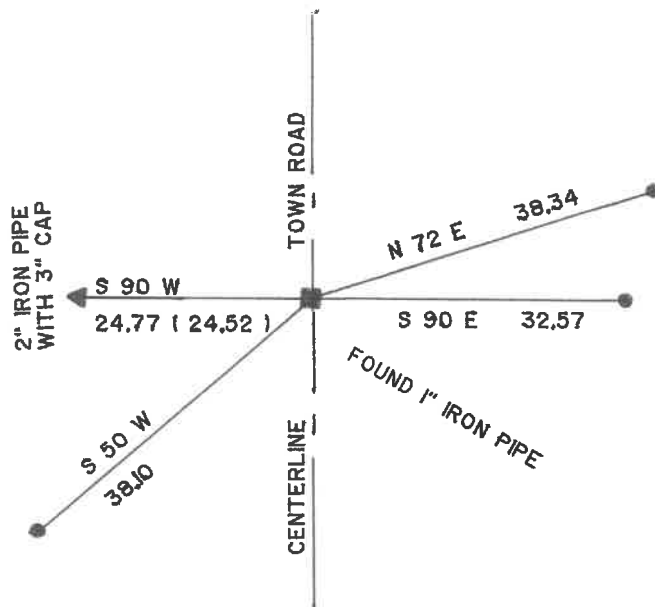
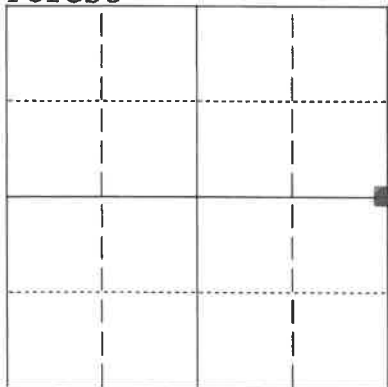
- Restored through acceptance of an obliterated evidence location
- Restored through acceptance of a found perpetuated location
- Considered a lost corner and reestablished through lost corner proportionate methods (include a plan view drawing showing distances and directions to other Public Land Survey Corners used for proportioning and determining the corner location)
- Restored or reestablished in a location that differs from a previous restoration or reestablishment (include a plan view drawing and indicate what was set and/or found)

Describe the monument and accessories used to perpetuate the location of this corner. (include a plan view drawing and indicate what was set and/or found)

● 1/2" IRON ROD SET

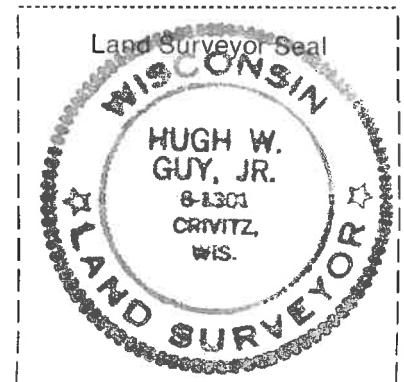
SCALE 1" = 20'

The EAST QUARTER
 corner of Section 36,
 T. 37 N., R. 16 E.,
 Fourth Principal Meridian,
~~Marathon~~ Forest County, Wisconsin



43716362000

■ = Location of Corner



I, HUGH W. GUY JR. RLS 1301
 (type or print name) certify that the corner location shown on this record was determined by
 me or under my direction and control and that this U.S. Public Land Survey Monument Record
 is correct and complete to the best of my knowledge and belief.

Hugh W. Guy Jr.
 Signature Date 12/22/98

Index No. _____

X-25 X25