

U S PUBLIC LAND SURVEY MONUMENT RECORD

NOTE: This form is intended and designed to fulfill all requirements of Wisconsin Administrative Code, Chapter A-E 7.08 U.S. Public Land Survey Monument Record (3) (a-i)

A-E 7.08(3)(a) Identity of corner
 SOUTH 1/4 CORNER OF SECTION 32
 TOWNSHIP 37 NORTH
 RANGE 16 EAST OF THE 4TH PM
 TOWN OF ARMSTRONG CREEK
 COUNTY OF FOREST

WISCORS - FOREST COUNTY
 N: 594,538.139 USft
 E: 934,400.031 USft
 Datum: NAD83 (2011)
 GNSS Method RTN - Direct
 GNSS Control WISCORS VRS



The coordinate value shown is the average of two or more GPS observations at a markedly different time.

A-E 7.08(3)(b) Description of any record evidence, monument evidence, occupational evidence, testimonial evidence, or any other material evidence.

Original Surveyor: Artemus Curtis

Date of Original Survey Commenced: September 1857
 Completed: October 1857

Original Accessories:

Yellow Birch 12 N 54° E 31 Links
 Ironwood 8 S68°W 22 Links

See Previous Monument Record:
 Index No. A-7
 Document No. 147751

June 1993 - Surveyor 1651 - Alan D. Harrison

Found post in poor condition, and accepted as best evidence of corner location.

Set 2 1/2" x 36" Aluminum Monument stamped to identify corner location.

Established reference monuments:

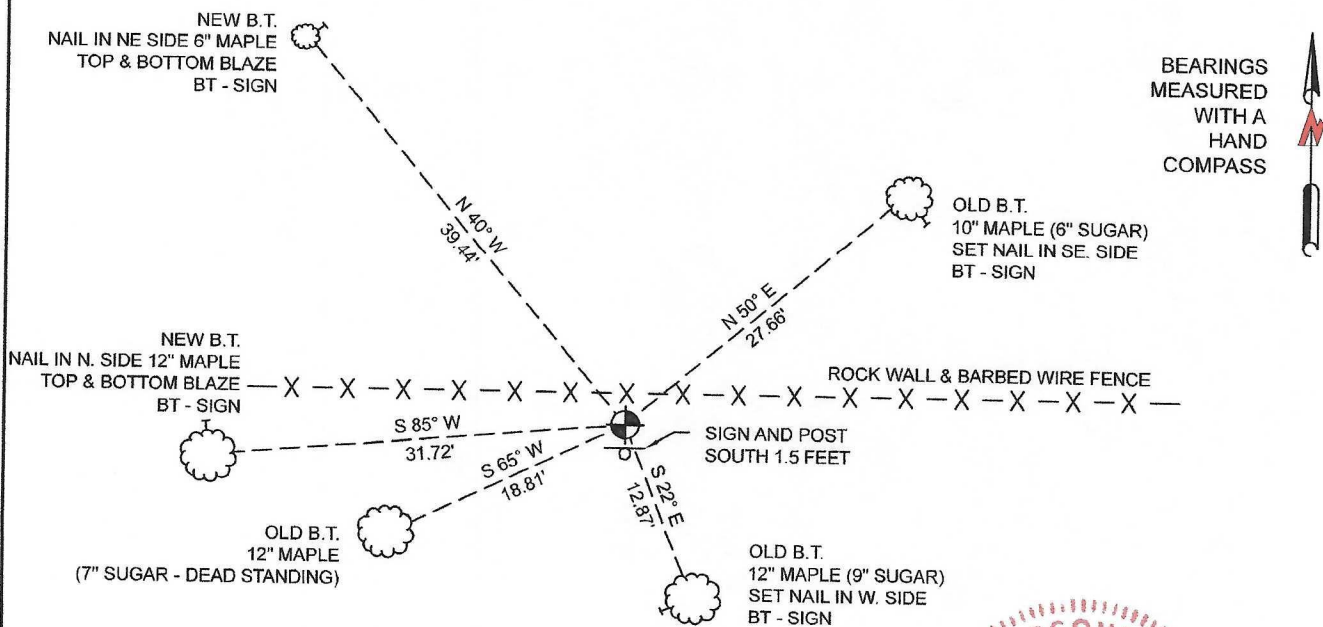
Sugar, 6", N.50°E., 27.72 feet
 Sugar, 9", S.22°E., 12.88 feet
 Sugar, 7", S.65°W., 18.81 feet
 Steel Sign Post, South, 1.58 feet

A-E 7.08(3)(f) Whether the corner was restored through acceptance of an obliterated location or a found perpetuated location.

October 29, 2021 - I found a 2 1/2" diameter aluminum pipe with a 3" diameter aluminum cap stamped to identify the corner. The monument is in a rock wall, and south of a barbed wire fence that is laying down. I also found Harrison's reference monuments in the condition shown below.

I accept this monument as a FOUND PERPETUATED LOCATION OF THE CORNER and established new witnesses as shown below.

A-E 7.08(3)(c)(d)(e)(h) Plan view of corner with references to at least 4 witness monuments. If in disagreement with previously established corner, show the distances between the two corners and also indicate the ties to the disputed. The directions and distances to other public land survey corners used as evidence or used for determining the corner location.



A-E 7.08(3)(i) I, Jeffrey L. DeMuth, Professional Land Surveyor No. S-2656, hereby certify that the corner location on this record was determined by me or under my direction and control and that this U.S. Public Land Survey Monument Record is correct and complete to the best of my knowledge, and belief

Jeffrey L. DeMuth
 SIGNATURE

February 2, 2022
 DATE



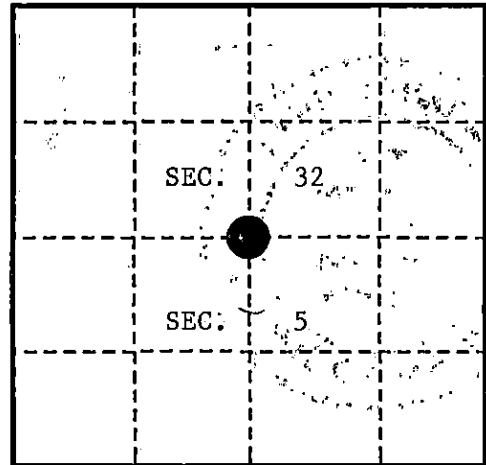
U. S. PUBLIC LAND SURVEY MONUMENT RECORD

INSTRUCTIONS:

This record shall show the location of the corner and shall include all of the following nine elements (a through i).

- (a) Identify the corner by reference to the U.S. public land survey system.
 O = Corner monument restored.

Quarter Corner Common to Section 5, T.36N., R.16E., and Section 32, T.37N., R.16E., Forest County, Wisconsin.



- (b) Describe any record evidence, monument evidence, occupational evidence, testimonial evidence or any other material evidence you considered, and whether the monument was found or placed.

In 1857, Artemas Curtis set $\frac{1}{2}$ post and made the following references: Yellow Birch, 12", N.54°E., 31 links (20.46'); Ironwood, 8", S.68°W., 22 links (14.52').

In 1920's Goodman Company notes do not have information on this corner.

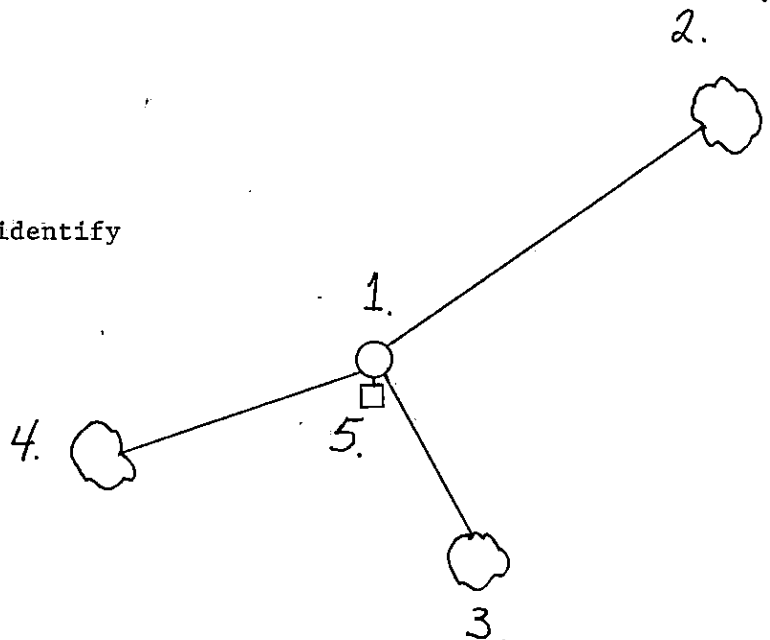
In June 1981, Milo Stefan found 5" x 5" squared balsam post in fenceline on rock fence. Blazed Hemlock, 16", s.68°W., 10.8', dead with no scribing and a blazed Sugar, 12", N.31°E., 23.7'.

In June 1993, Alan Harrison found post as per Stefan in poor condition. Post fits within 3 feet of proportion. Accepted as best evidence of corner location.

- (c) In the plan view drawing below, provide reference ties to at least 4 witness monuments, or, if the location is within a municipality, to at least 2 witness monuments. (witness monuments shall be made of concrete, natural stone, iron or other equally durable material.)

- (d) Show a plan view drawing depicting the relevant monuments and reference ties which is sufficient in detail to enable accurate relocation of the corner monument if the corner monument is disturbed. Indicate north.

1. 2½" x 36" Aluminum Monument stamped to identify corner location.
2. Sugar, 6", N.50°E., 27.72 feet
3. Sugar, 9", S.22°E., 12.88 feet
4. Sugar, 7", S.65°W., 18.81 feet
5. Steel Sign Post, South, 1.58 feet



REGISTER'S OFFICE
 Forest County, Wis.

Received for record this 30th day
 of JUNE A.D., 1993 at
2:00 o'clock P.M. and recorded
 in Vol. CORNER RESTORATIONS
 page A-7

Paul Hochstetler
 Register of Deeds

43716320020

(a) Describe any material discrepancy between the location of the corner as restored or reestablished and the location of that corner as previously restored or reestablished by distance and direction. Show the discrepancy on the plan view drawing under (d), above. Show the distances between the corner as previously restored or reestablished and (1) the corner as restored or reestablished, and (2) to at least 2 of the witness monuments shown on the drawing in (d), above.

None.

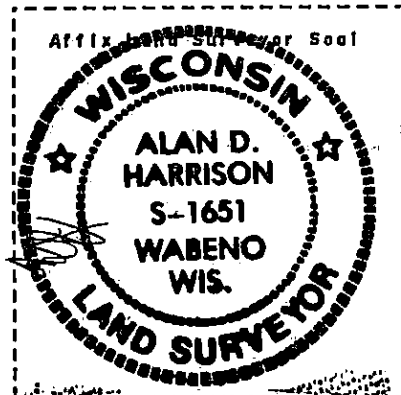
(f) Was the corner restored through acceptance of (1) an obliterated evidence location, or, (2) a found perpetuated location?

A found perpetuated location.

(g & h) Was the corner reestablished through lost corner proportionate methods? If so, show the method, including the directions and distances to other public land survey corners used as evidence or used for proportioning in determining the corner location?

No.

(1) I, Alan D. Harrison
(type or print name) certify that the corner location shown on this record was determined by me or under my direction and control and that this U.S. Public Land Survey Monument Record is correct and complete to the best of my knowledge and belief.



Alan D. Harrison
Signature

6/16/93
Date

CERTIFICATE READY FOR FILING:

Sue Vep
District Ranger