

U.S. PUBLIC LAND SURVEY MONUMENT RECORD

(Prepared and as required by S. A-E 7.08 WI Administrative Code)

The SOUTH 1/4 corner of Section 31, T. 37 N., R. 16 E., Forest County, WI  
Corner was (check all that apply)

- ☐ Restored through acceptance of an obliterated evidence location.
- ☒ Restored through acceptance of a found perpetuated location.
- ☐ Determined to be lost and re-established through proportionate methods.  
(show bearings and distances to PLSS comers used for proportioning.)
- ☐ Restored/recovered/re-established in a location that differs from a previously  
established position. (Show difference in plan view below.)
- ☐ Check here if additional information is shown on the reverse side of this form.

Describe record evidence, recovered physical evidence, occupational evidence, testimonial evidence,  
and all other evidence considered in the recovery/restoration of the corner.

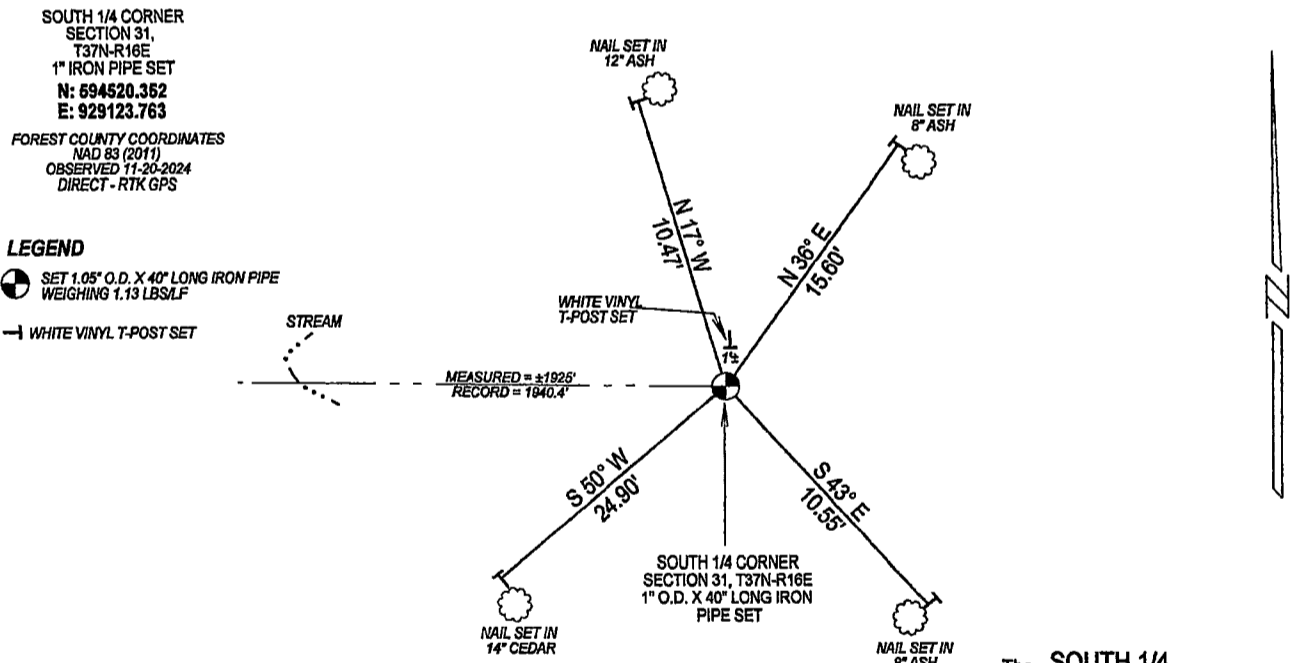
1857 - Original corner established by Artemas Curtis - bearing trees: Cedar, 6", N37°E, 12 links; Cedar, 12", S8°E, 34 links;  
a stream 5 links wide located 29.4 rods (1940.4') West of this corner is also referenced.

2024 - Working in Section 31, I searched the area for any evidence of the corner post, original bearing trees and stream call from Curtis. I located  
the stream called for in the original notes, and found a ±2"x2" wood post with "axe" marks matching well with the record distance from stream.  
This position measures ±1925' (Record = 1940.4') from said stream. I accept the wood post as the best available evidence of the corner location  
and set a 1" x 40" iron pipe to mark the corner.

Physical description of the monument set:

I set a 1" o.d. x 40" long iron pipe at the corner location and tied out as shown below.

Describe the accessories used to perpetuate the location of the corner. Include a plan view drawing and indicate accessories  
found/set. Describe measuring point on bearing trees. Show any topographic features that would aid in future recovery of the corner.



NOTES  
- SKETCH NOT DRAWN TO SCALE.  
- TIE BEARINGS SHOWN ARE MEASURED WITH A HAND COMPASS.  
- ALL TIES MEASURED WITH STEEL TAPE TO A NAIL W/ WASHER SET  
IN LOW/SIDE OF TREE.  
- SURVEY MARKER SIGNS PLACED ON BT'S AND WHITE VINYL T-POST  
SET IN COLLABORATION WITH SURVEYOR DEMUTH S-2656.

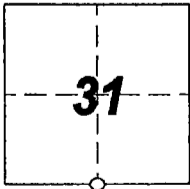
SURVEYORS SEAL



I, Michael J. Hoffman certify that the  
corner location shown on this record was determined  
by me or under my direction and control and that this  
U.S. Public Land Survey Monument Record is correct  
and complete to the best of my knowledge and belief.

Michael J. Hoffman 08/27/2025  
Signature Date

The SOUTH 1/4  
Corner of Section 31  
T. 37 N., R. 16 E.  
Forest County, WI



○ = Location of corner

INDEX No. 4371631 0020