

Document Number
208860

REGISTER'S OFFICE
Forest County, Wis.
Received for record this 27th day
of April A.D., 2012 at
9:00 o'clock A.M. and recorded
in Vol. CORNER RESTORATION
page R-9
Christine Wisniewski, Deputy
Register of Deeds

U.S. PUBLIC LAND SURVEY MONUMENT RECORD

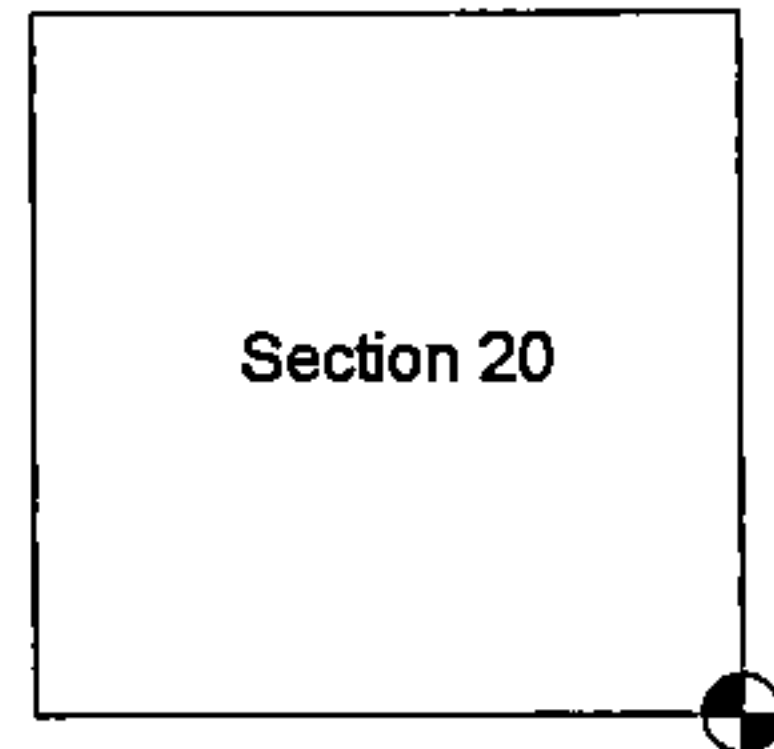
NOTE: This form is intended and designed to fulfill all requirements of Wisconsin Administrative Code, Chapter A-E 5.02, U.S. Public Land Survey Monument Record (3) (a) (b) (c) (d) (e) (f) (g) (h) (i). An additional sheet may be added if necessary to conform with said requirements.

(a) Corner location: Township 37 North

Range 16 East

Town/City/Village Armstrong Creek

County Forest

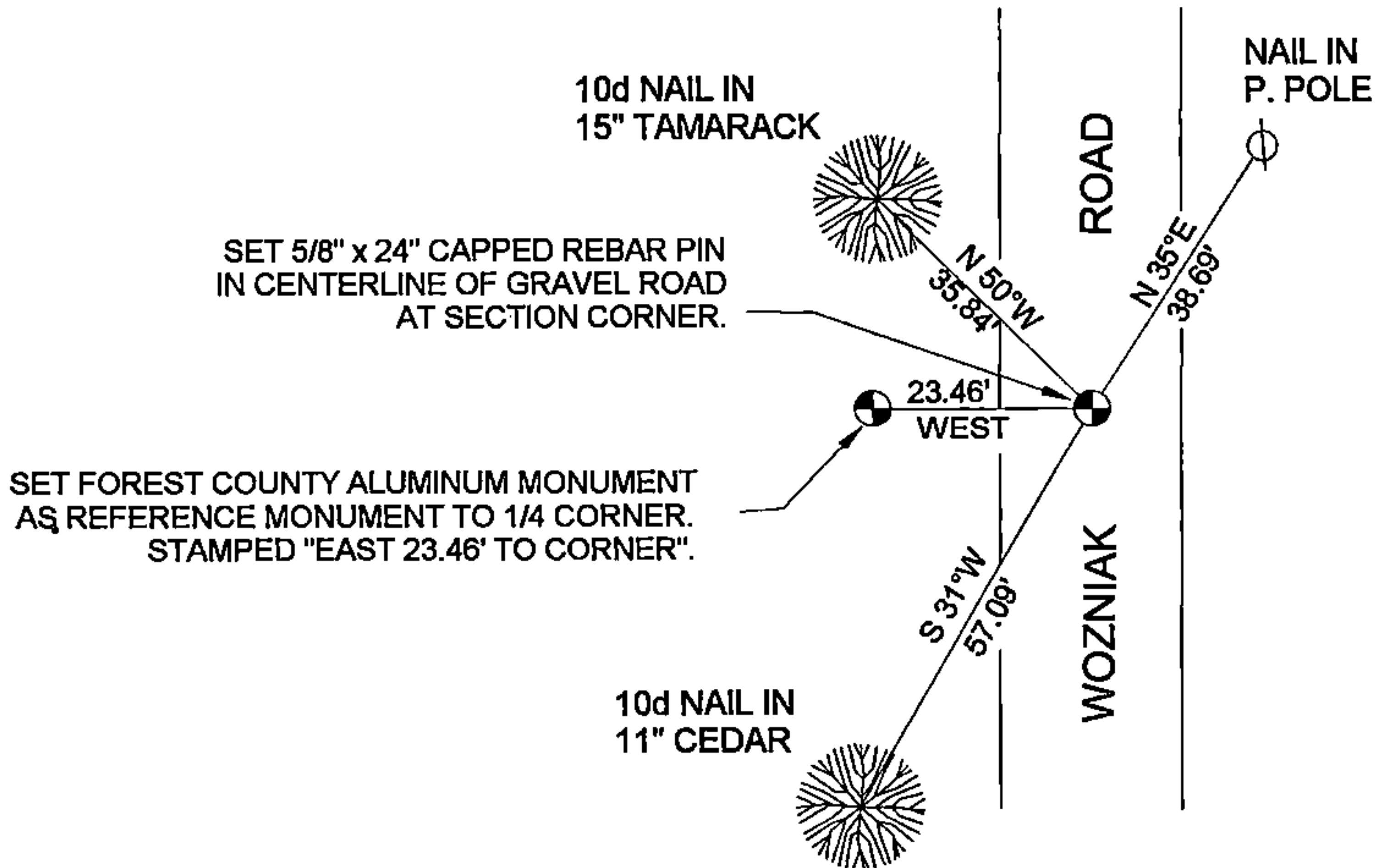


SECTION CORNER COMMON TO
SECTIONS 20, 21, 28 AND 29, T37N - R16E

(b) (f) (g) (h) Description of monument found at this corner and if it was accepted, state all evidence (material, testimonial, occupation, plats, records, other monuments) used as a basis for accepting. If not accepted or if nothing was found, state evidence used as basis for establishing location. If reestablished through lost corner proportionate methods, indicate all monuments, distances and direction used to establish.

No original corner evidence was found. I established search location for corner using GLO field note calls to creek North and swamp South. At this position I found an old rusty nail buried in the centerline of Wozniak road. Measuring North from this position, I measure 2622.8 feet to the extension of an ancient fallen fence West of Wozniak road. Continuing North, I measure 2622.9 feet to the Northeast corner of Section 20. I accepted the found nail as the corner position as it checks nicely with the original notes and surrounding corners.

(c) (d) (e) Plan view of corner with ties to at least 4 witness monuments. If in disagreement with previously established corner, show the distance between the two corners and also indicate the ties to the disputed corner.



(i) I, STEVEN R. APPLEKAMP

(type or print name) certify that the corner location on this record was determined by me or under my direction and control and that this U.S. Public Land Survey Monument Record is correct and complete to the best of my knowledge and belief.

Steven R. Applekamp Signature
April 16th 12 Date

INDEX NO. R-9

43716200000

R-9