

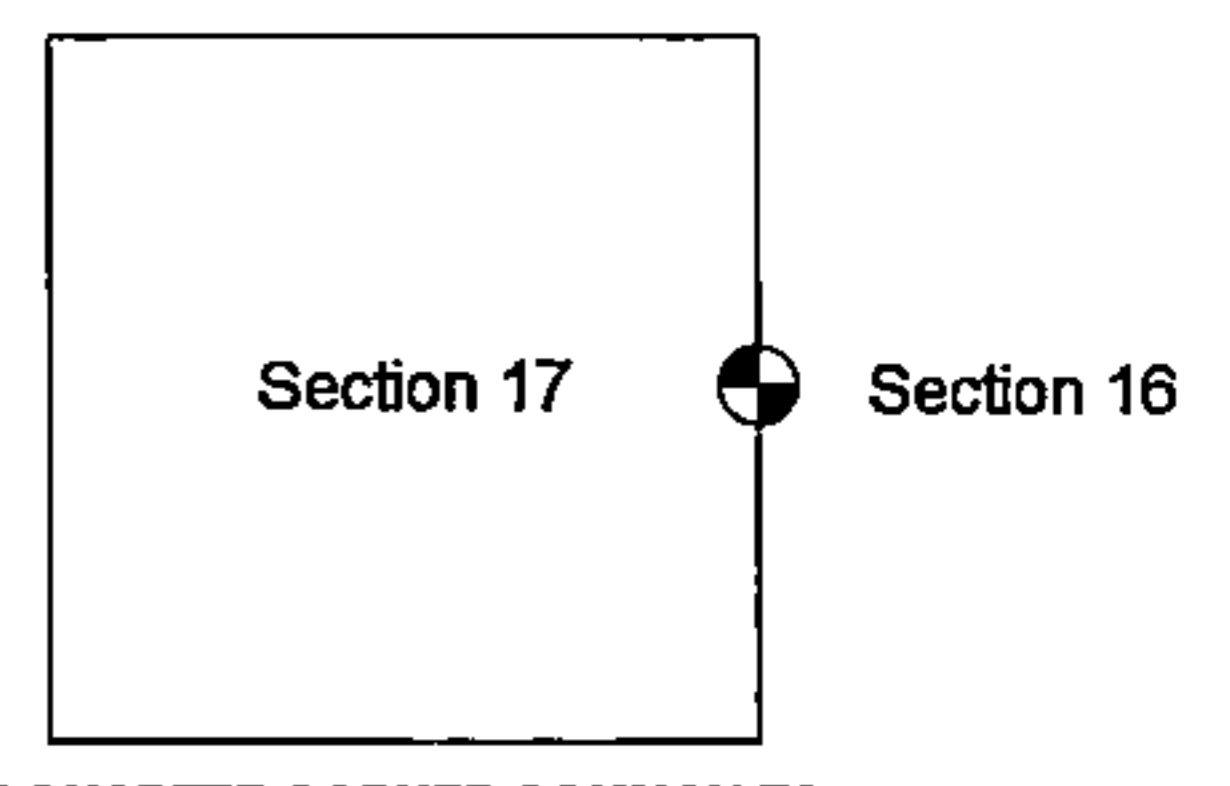
Document No. **208862**

REGISTER'S OFFICE
Forest County, Wis.
Received for record this 27th day
of April A.D., 2012 at
9:00 o'clock A.M. and recorded
in Vol. CORNER RESTORATION
page E-9
Timothy M. Sitten, Deputy
Register of Deeds

U.S. PUBLIC LAND SURVEY MONUMENT RECORD

NOTE: This form is intended and designed to fulfill all requirements of Wisconsin Administrative Code, Chapter A-E 5.02, U.S. Public Land Survey Monument Record (3) (a) (b) (c) (d) (e) (f) (g) (h) (i). An additional sheet may be added if necessary to conform with said requirements.

(a) Corner location: Township 37 North
Range 16 East
Town/City/Village Armstrong Creek
County Forest

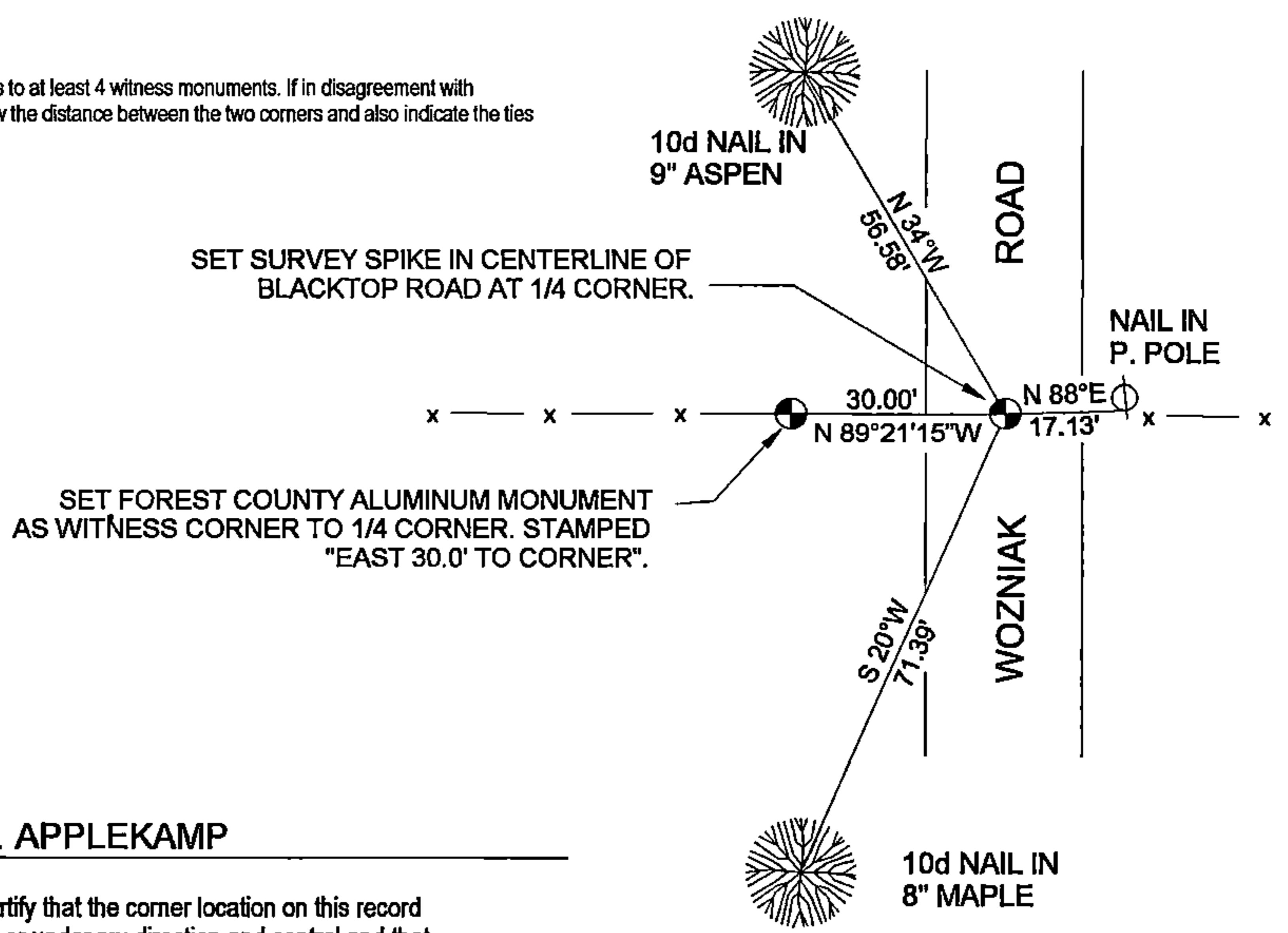


ONE-QUARTER CORNER COMMON TO SECTIONS 16 AND 17, T37N - R16E

(b) (f) (g) (h) Description of monument found at this corner and if it was accepted, state all evidence (material, testimonial, occupation, plats, records, other monuments) used as a basis for accepting. If not accepted or if nothing was found, state evidence used as basis for establishing location. If reestablished through lost corner proportionate methods, indicate all monuments, distances and direction used to establish.

No original corner evidence was found. At the calculated corner position, I found remnants of an ancient fence to the West and a recent steel post fence to the East of Wozniak road. Using the centerline of Wozniak road and the existing fencelines results in a distance of 2636.33 feet to the Section corner to the North and 2636.02 feet to the Section corner to the South. I restored corner at the intersection of the existing fencelines and at the centerline of Wozniak road.

(c) (d) (e) Plan view of corner with ties to at least 4 witness monuments. If in disagreement with previously established corner, show the distance between the two corners and also indicate the ties to the disputed corner.



(i) I, STEVEN R. APPLEKAMP

(type or print name) certify that the corner location on this record was determined by me or under my direction and control and that this U.S. Public Land Survey Monument Record is correct and complete to the best of my knowledge and belief.

Signature Steven R. Applekamp Date April 16th 12

INDEX NO. L-9

43716172000

6-7