

Received for record this 21st day
of January A.D., 2010 at
9:00'clock A.M. and recorded
in Vol. Corner Restoration
page J-21

Kay Swanson, Deputy

Document Number

202468

U.S. PUBLIC LAND SURVEY MONUMENT RECORD

(As Required By s. A-E 7.08, WI Adm. Code)

History of original corner establishment and subsequent restorations and description of any record, monument, occupational, testimonial or other evidence considered:

1859 JAMES McBRIDE, DEPUTY SURVEYOR ESTABLISHED CORNER

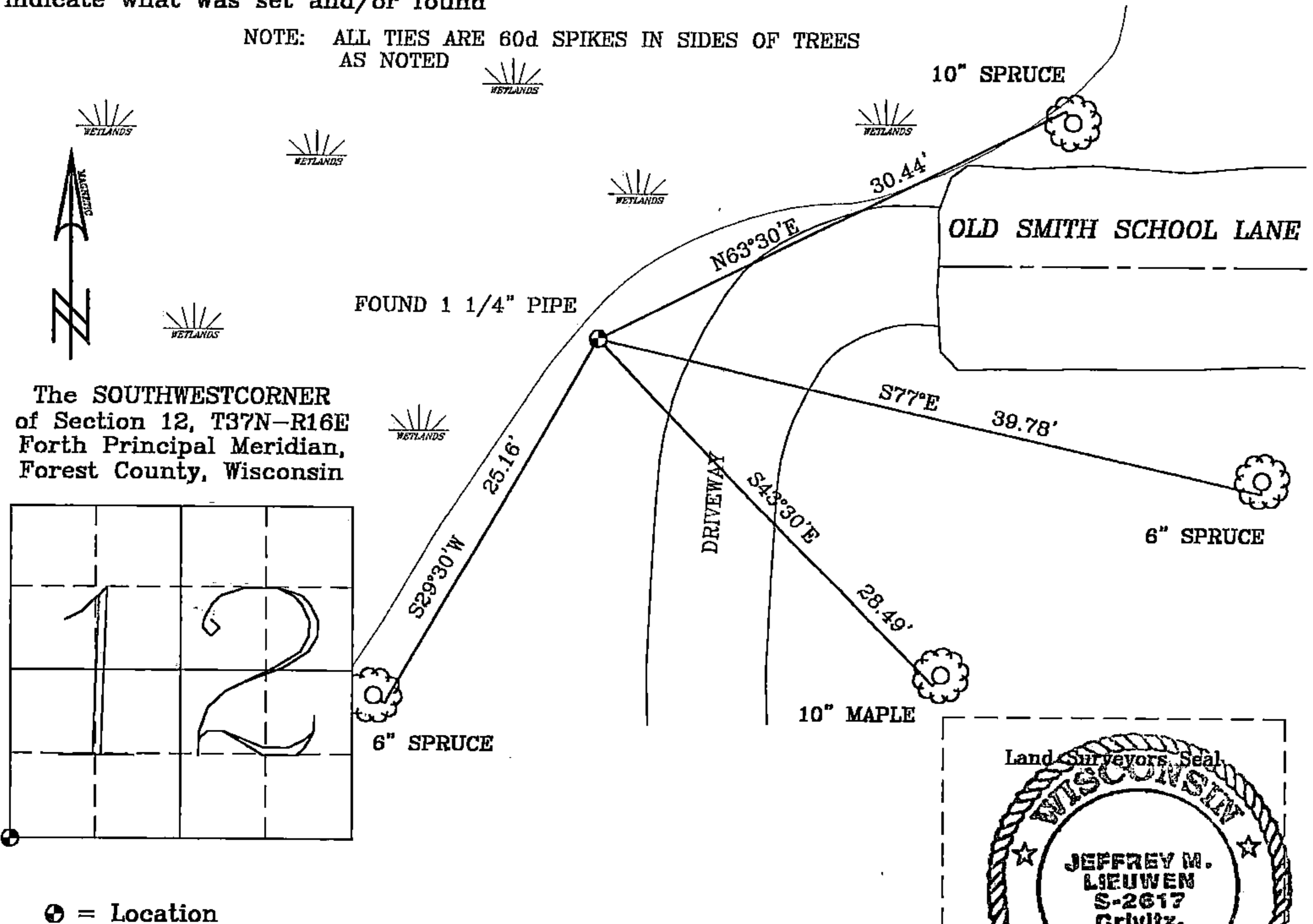
2010 JEFFREY M. LIEUWEN, REGISTERED LAND SURVEYOR, S-2617 FOUND 1 1/4 INCH PIPE IN EXTENTION OF EAST - WEST FENCE. WE TIED CORNER AS SHOWN

Corner was: (Check All That Apply)

- Restored through acceptance of an obliterated evidence location
- Restored through acceptance of a found perpetuated location
- Considered a lost corner and reestablished through lost corner proportionate methods(include a plan view drawing showing distances and directions to other Public Land Survey Corner used for proportioning and determining the corner location)
- Restored or reestablished in a location that differs from a previous restoration of reestablishment(include a plan view drawing and indicate what was set and/or found)

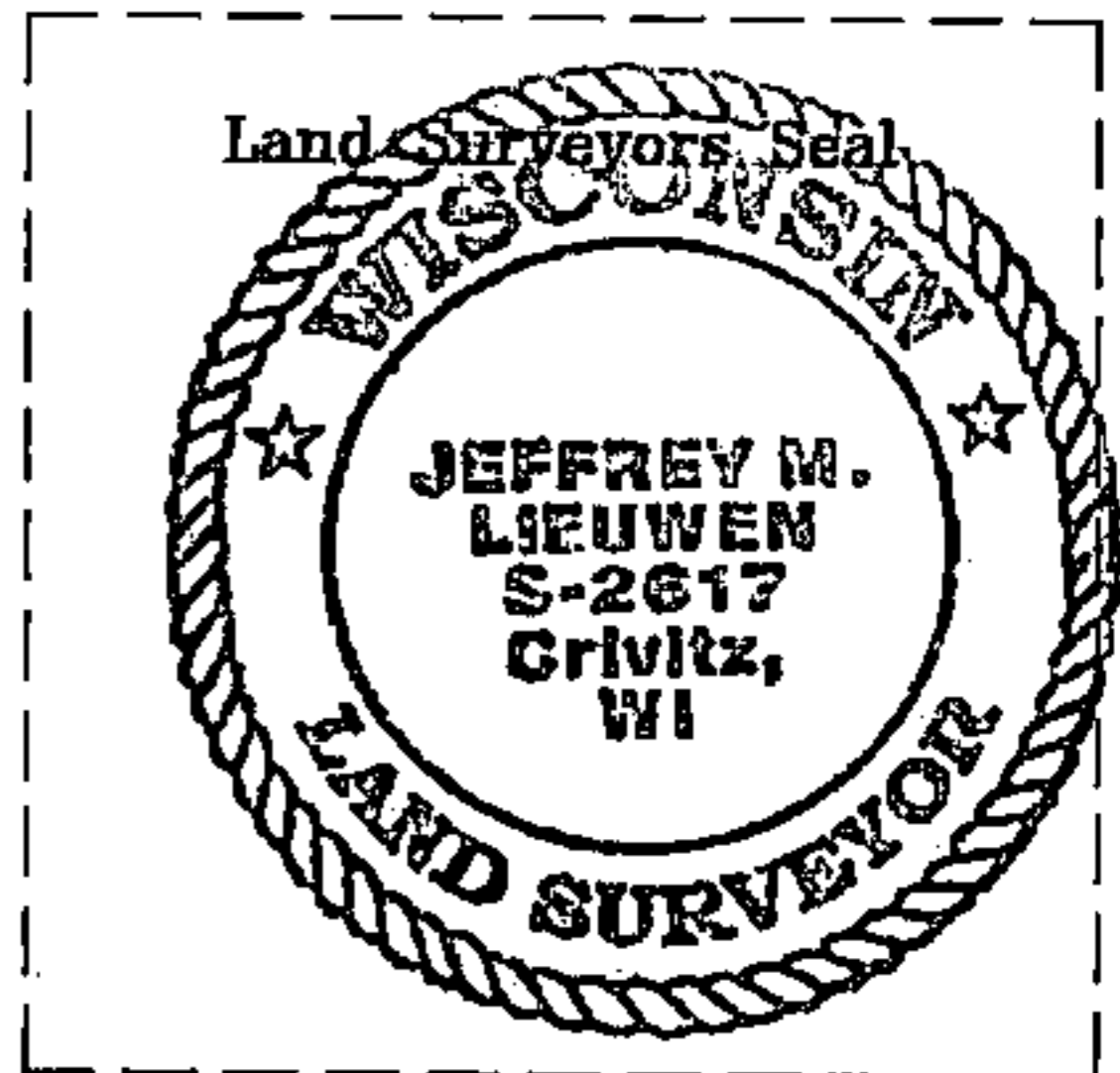
Describe the monument and accessories used to perpetuate the location of this corner. (include a plan view drawing and indicate what was set and/or found)

NOTE: ALL TIES ARE 60d SPIKES IN SIDES OF TREES AS NOTED



I, JEFFREY M. LIEUWEN RLS 2617
(Type or print name) certify that the corner location shown on this record was determined by me or under my direction and control and that this U.S. Public Land Survey Monument Record is correct and complete to the best of my knowledge and belief.

Jeffrey M. Lieuwen
Signature Date 1/17/2010



Index No. J-21

43716110000

J 21