

CERTIFIED LAND CORNER RESTORATION

Index No. A-17

State of Wisconsin }  
County of Forest } ss.

I Gary L. Pisoni, do hereby certify that on the 4th day of October, 1994, I found evidence of the Northwest Section corner of Section 2 Township 36, North, Range 15 East, Fourth Principal Meridian, as described hereon; and that from this evidence I established a new monument and accessories as described hereon to perpetuate the original location of this corner.

Resident witnesses:

.....  
.....  
.....

History of original corner establishment:

Original Government Survey in 1857 by Artemas Curtis. West between Sections 35 and 2, at 80.00 chains, set Section corner post to Sections 2, 3, 34 and 35, from which the following bear:

Aspen	12"	N 16° W	32 lks.
Aspen	12"	N 37° E	29 lks.
Aspen	14"	S 35° E	16 lks.
Fir	8"	S 67° W	11 lks.

Description of corner evidence found:

No original corner evidence was recovered.

I re-established the corner position by single proportionate distance and on line between the North quarter corner of Section 3 and the North quarter corner of Section 2.

Description of monument and accessories I established to perpetuate the original location of this corner.

At the corner position, set a 2½ inch diameter aluminum pipe monument, 3 feet long, 3 inches above the ground surface, with an aluminum cap stamped: T37N, R15E, S-34, S-35, S-3, S2, T36N, 1994, S-1634; from which the following new blazed and scribed bearing trees bear: (all measurements taken to a nail in side of tree)

Black Spruce	12"	N 01° E	57.03 feet
Red Pine	10"	S 73° E	53.63 feet
Red Pine	11"	S 37° E	25.74 feet
Red Pine	12"	S 32° W	60.94 feet
Steel sign post		West	0.88 feet

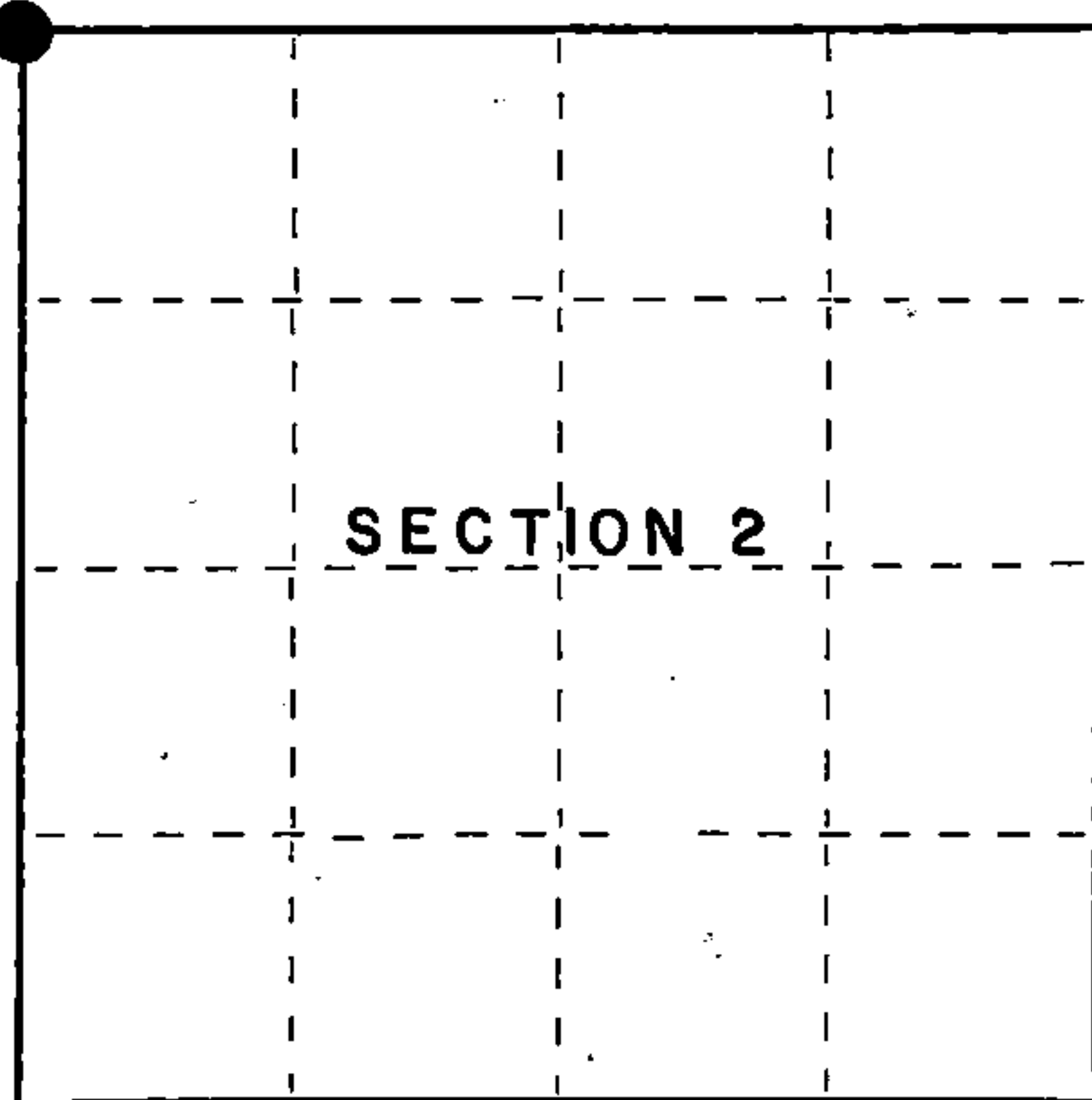
Dated at Iron River, MI, ~~Wis.~~, this 8th day of April, 1995.

Signature Gary L. Pisoni Title Land Surveyor Registration No. S-1634  
(County Surveyor, Registered Land Surveyor, or other duly authorized official)

Office of Register of Deeds, County of Forest, I hereby certify that the within instrument was filed in this office for record on the 20th day of March, 1997 at 1:30 o'clock P M.

(Register of Deeds).

By [Signature] Deputy



● = Corner monument restored.

FORM NO. 985-A



Stock No. 26273

158104

4371524000

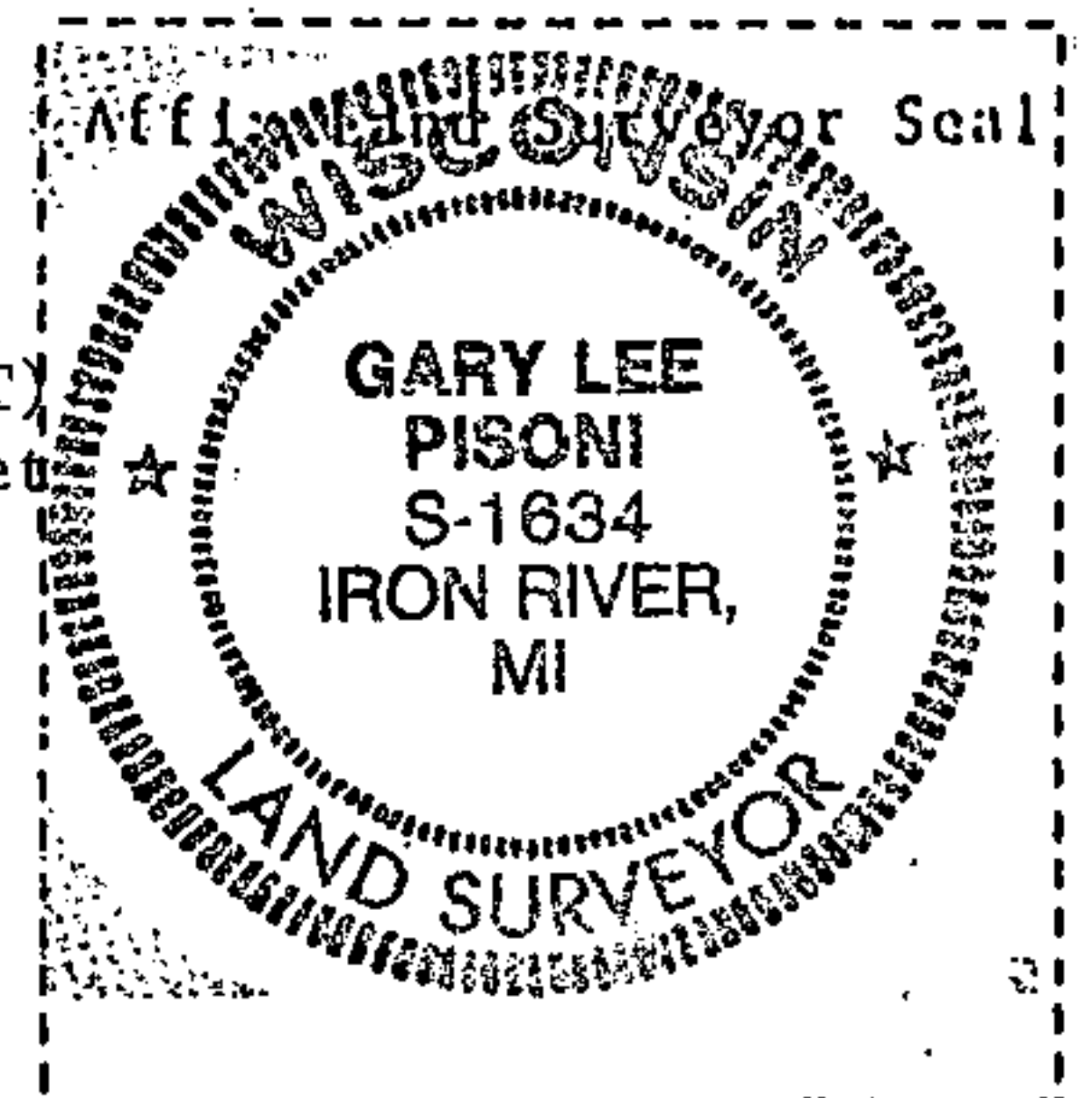
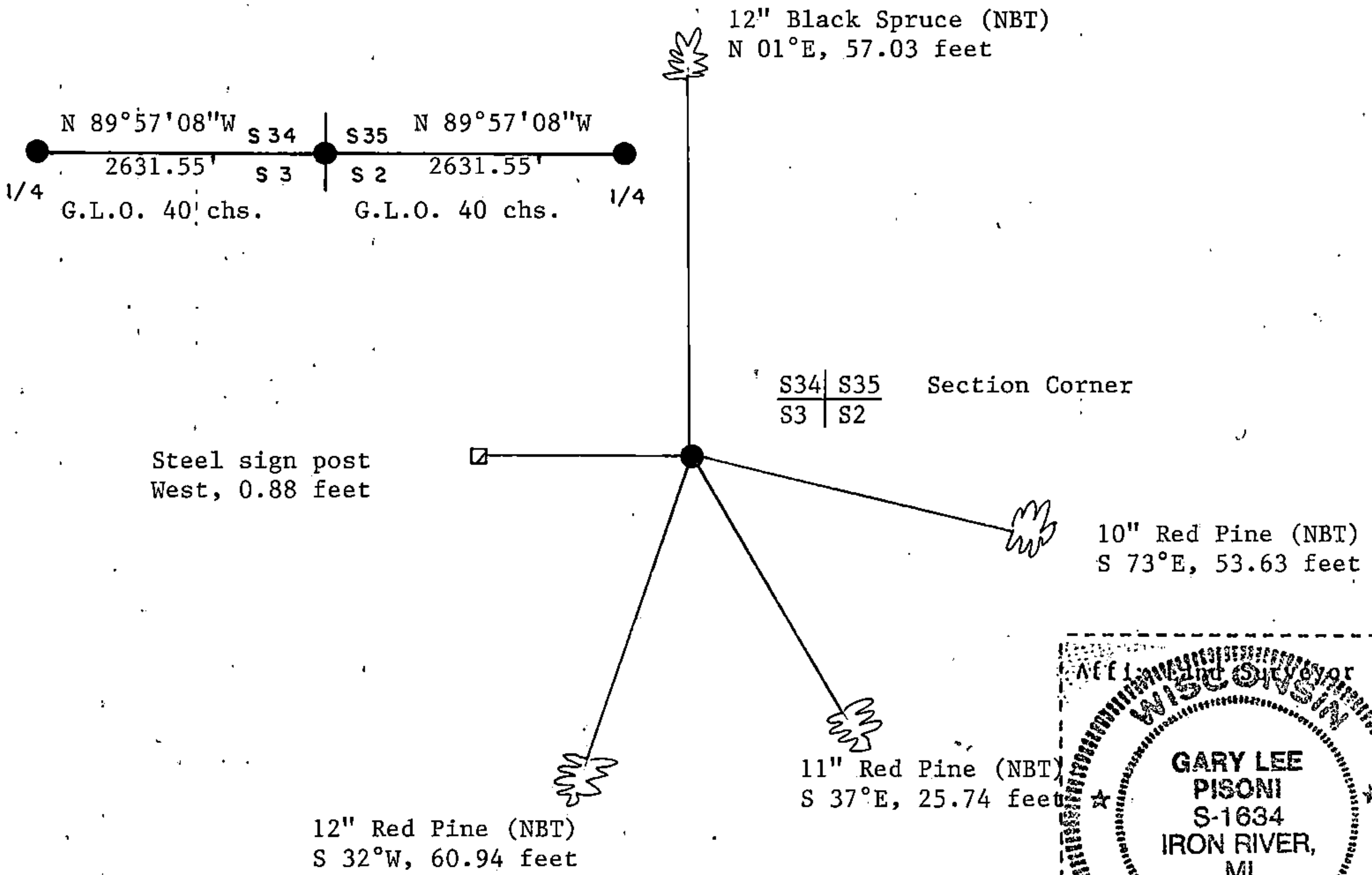
Describe any material discrepancy between the location of the corner as restored or reestablished and the location of that corner as previously restored or reestablished by distance and direction. Show the discrepancy on the plan view drawing under (d), above. Show the distances between the corner as previously restored or reestablished and (1) the corner as restored or reestablished, and (2) to at least 2 of the witness monuments shown on the drawing in (d), above.

None

(f) Was the corner restored through acceptance of (1) an obliterated evidence location, or, (2) a found perpetuated location?

Restored through lost corner proportionate methods.

(g/h) Was the corner reestablished through lost corner proportionate methods? If so, show the method, including the directions and distances to other public land survey corners used as evidence or used for proportioning in determining the corner location?



(i) I, Gary L. Pisoni (type or print name) certify that the corner location shown on this record was determined by me or under my direction and control and that this U.S. Public Land Survey Monument Record is correct and complete to the best of my knowledge and belief.

Signature Gary L. Pisoni Date 11-17-95

Survey requested by: \_\_\_\_\_ District Ranger Date \_\_\_\_\_